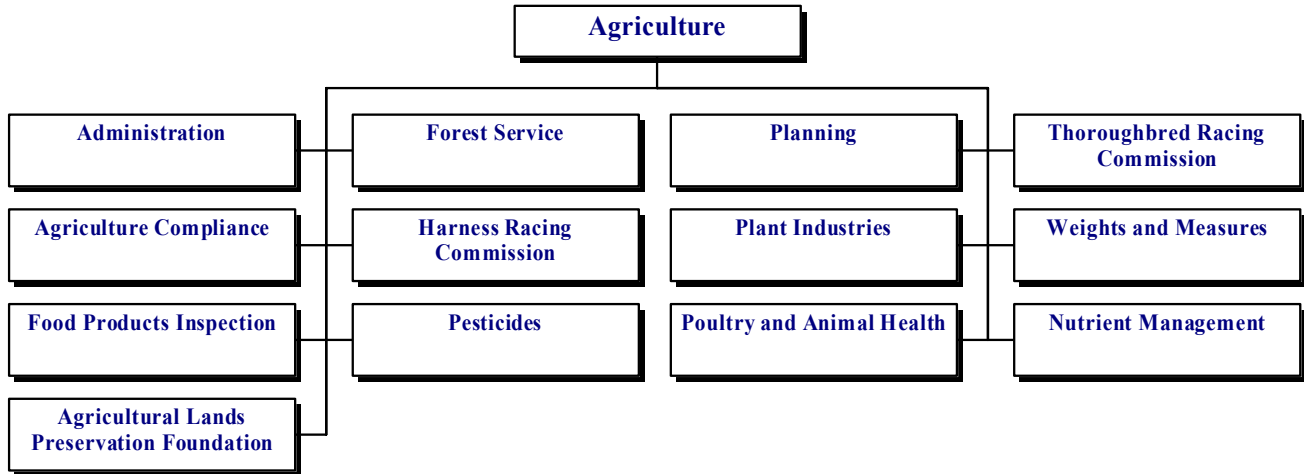


# AGRICULTURE

## 65-00-00



### MISSION

To sustain and promote the viability of food, fiber, and agricultural industries in Delaware through quality services that protect and enhance the environment, health, and welfare of the general public.

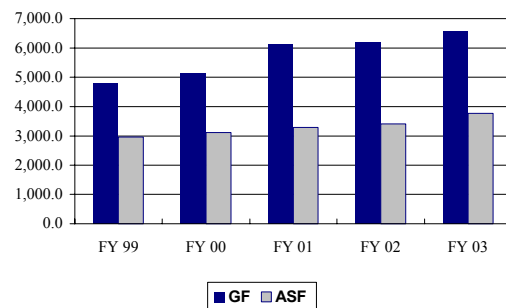
### KEY OBJECTIVES

The department works to ensure the most efficient use of limited resources to carry out mandated responsibilities that include, but are not limited to:

- Maintain same-day response to all human, animal, and plant health emergencies.
- Reduce residues, pathogens, and contaminants in the food supply.
- Reduce the non-compliance of commercial transactions involving regulated articles and activities.
- Increase participation in land management and conservation programs to support the Purchase Development Rights (PDR) program.
- Identify and support new opportunities for expanding sales of Delaware's agricultural commodities and value-added products.
- Ensure the integrity of Delaware agricultural products through zero tolerance of quarantine pests and diseases for interstate and international certification.

- Increase the number and diversity of people participating in agricultural education, information, and training programs.
- Strengthen public awareness and knowledge regarding Delaware Department of Agriculture's (DDA) major initiatives and the wide range of consumer services offered by DDA.
- Increase employee participation in professional development and quality improvement programs.
- Strengthen employee empowerment by using a team approach to problem solving.
- Enhance employee recognition programs.

**Five-Year Appropriation History**



### FUNDING

	FY 2002 ACTUAL	FY 2003 BUDGET	FY 2004 GOV. REC.
GF	6,751.6	6,589.9	6,667.0
ASF	3,191.5	3,768.0	3,854.2
<b>TOTAL</b>	<b>9,943.1</b>	<b>10,357.9</b>	<b>10,521.2</b>

# AGRICULTURE

## 65-00-00

### POSITIONS

	FY 2002 ACTUAL	FY 2003 BUDGET	FY 2004 GOV. REC.
GF	86.8	86.8	86.8
ASF	32.0	34.0	35.0
NSF	16.2	16.2	15.2
<b>TOTAL</b>	<b>135.0</b>	<b>137.0</b>	<b>137.0</b>

### FY 2004 BUDGET HIGHLIGHTS

#### OPERATING BUDGET:

- ◆ Recommend one-time funding of \$600.0 for Crop Insurance in the Budget Office's contingency to provide cost share assistance to farmers.
- ◆ Recommend enhancement of \$28.8 ASF for increased costs in poultry/shell egg grading and fruit and vegetable grading due to industry demand.
- ◆ Recommend enhancements of \$23.1 ASF in the Harness Racing Commission and \$184.4 ASF in the Thoroughbred Racing Commission due to an increase in racing days.

## AGRICULTURE

### 65-01-00

#### BACKGROUND AND ACCOMPLISHMENTS

##### **Administration**

The Office of the Secretary serves as the contact point between the largest industry in the state—agriculture—and state government. The Secretary of Agriculture represents the agricultural community and the related sectors of the economy in all facets of state government. Under the direction of the Office of the Secretary, the department continues to conduct an aggressive program to inform the public of both the contributions made by the agricultural community, and the services and protection provided by the department to the consumers of the state. The department has an “educate before we regulate” policy. The department continues to develop better lines of communication with those that are regulated in order to obtain full compliance with the laws, rules, and regulations enforced by the department before resorting to administrative or criminal hearing procedures.

The Office of the Secretary also provides the Secretary of Agriculture with administrative support plus the personnel and fiscal services necessary to operate the department. The Information, Education, and Marketing Section provides outreach functions to the agricultural community, including the development of programs on agriculture market development and expansion, educational programs, and other communications from the department.

##### **Agriculture Compliance**

The Agriculture Compliance Section regulates a variety of products under the authority of the Delaware Code specifically the Delaware Commercial Feed Law, the Delaware Commercial Fertilizer and Soil Conditioner Law, the Delaware Agricultural Liming Materials Act, the Frozen Sweetened Products Law, and the Milk, Cream, and Other Milk Products Law. These laws require the registration of the above products before being offered for sale. They also ensure that manufacturers label their products with accurate, non-misleading information so that consumers are able to make well-informed decisions about the products they buy. The laws also authorize the inspection and testing of products to ensure that label claims are true and accurate.

# AGRICULTURE

65-00-00

## Food Products Inspection

Delaware is a cooperative state in the Federal-State Cooperative Inspection Program. The state meat and poultry inspection program maintains standards "at least equal to" the federal inspection program.

In February 1995, the federal Food Safety and Inspection Service (FSIS) promulgated the Pathogen Reduction/Hazard Analysis and Critical Control Point (HACCP) regulation, which improves food safety by identifying and controlling hazards before products reach the consumer. HACCP has been fully implemented in Delaware since January 2000.

Delaware also cooperates with the USDA in cooperative grading agreements with state Departments of Agriculture and other state agencies. Under these federal-state agreements, federal-state licensed graders perform their work throughout the state at point of origin, grading various commodities. The federal Food Safety and Quality Service (FSQS) establishes basic grading policies and procedures. The grade standards describe the quality requirements for each grade of a commodity, giving the industry a common language for selling and buying.

## Forest Service

Forests, both rural and urban, are a vital resource of the state, providing numerous benefits to all Delawareans. Delaware's rural forests comprise approximately 30 percent (375,000 acres) of the state, approximately 90 percent of which are privately owned. Community forests, those located within cities and towns, are equally important as they beautify the state, moderate temperatures, reduce stormwater runoff, and conserve energy within communities. Delaware's forests face many challenges, including fragmentation, wildfire, insects and disease, poor management techniques, and non-native (exotic) species. The Delaware Forest Service offers programs to help citizens address these challenges.

The problems facing Delaware's rural and urban forests can be divided into three categories. The first challenge facing today's forests is the lack of sound management. A second challenge is maintaining the long-term health of Delaware's forests. The lack of public knowledge about the importance of forests and the professional services available to assist landowners and communities with the management of these lands is the third challenge facing forests.

In order to address these challenges, the Delaware Forest Service cooperates with the U.S. Forest Service, State and Private Forestry (S&PF) Program. The S&PF Program provides grants to the Forest Service as well as technical assistance. Funding for approximately 20 percent (4.5 positions) of the Forest Service's staff, including 3.5 forester positions, and 29 percent (\$500,000 in federal Fiscal Year 2003) of the operating budget was provided by the S&PF Program.

## Harness Racing Commission

The Delaware Harness Racing Commission regulates and oversees the sport of harness racing in the state. Its primary objective is for the protection of the betting public. The commission is also responsible for ensuring that the state and the betting public receive their fair percentages of the wagering dollar by overseeing periodic accounting audits. In addition, the commission monitors the conduct of the entire racing industry and may, from time to time, hold hearings to thoroughly investigate any perceived wrongdoings.

## Pesticides

The Pesticide Section is delegated authority under the Delaware Pesticide Law and the Federal Insecticide, Fungicide, and Rodenticide Act (FIFRA) to regulate the sale and use of pesticides in the state. Stakeholders included in the regulatory process range from large chemical corporations registering their products to small lawn care firms applying pesticides as a service. Farmers, pesticide dealers, commercial pesticide applicators (comprising 20 categories of pest control), researchers, farm workers, government agencies, and various environmental and industry associations are also stakeholders in the process. The section recently implemented e-Government technology to significantly improve services by offering the option to renew pesticide product registration, business license, and applicator certification online.

The Pesticide Section emphasizes education, and offers a comprehensive pesticide applicator certification and training program. The educational program is complemented by an on-going compliance assistance and enforcement program of inspections and sampling at the various levels of pesticide distribution and use. Complaint investigation is a high priority, and, when appropriate, the Pesticide Section has been successful in prosecuting both civil and criminal violations of the statute. Enforcement activities are now posted on the department's website to inform consumers of our regulatory activities.

Since 1995, the section has administered a groundwater protection program to ensure the use of pesticides is not degrading the state's ground/drinking water quality. The centerpiece of the program is a statewide shallow groundwater monitoring network comprised of over 60 domestic and agricultural wells, and 108 dedicated monitoring wells owned by the state. In addition to testing the wells for pesticides and other contaminants, the section also monitors the depth of the water table to help ensure adequate water supply for domestic and agriculture use in the future.

The section posts information from the monitoring network on the department's interactive GIS (geographic information system) website to inform and educate the public.

# AGRICULTURE

65-00-00

The section continues to work closely with Division of Public Health, Department of Natural Resources and Environmental Control and Delaware Geological Survey to address water quantity and quality issues.

## **Planning**

Planning is a technical enterprise within the department that includes land use planning, agricultural land preservation, and computer operations.

**Land Use Planning** - Combining farmland preservation and planning coordination has helped to stem the loss of the best farmland in Delaware. The 1997 Census of Agriculture indicates the past five-year loss of agricultural land is one half the loss of the previous five-year period. The work of this section is closely tied to the Governor's Livable Delaware Agenda.

In addition, the department supports Governor Minner's Livable Delaware initiative by offering resources and support to the development of a Transfer of Development Rights (TDR) program.

Computerized Geographic Information Systems greatly enhance the department's analytical capacity in land use planning. GIS is now available to the public and other professionals on the Internet. These systems also play a key role in farmland preservation.

## **Plant Industries**

Plant Industries is the plant and plant pest regulatory enforcement authority in the state. Its principal mission is to protect agriculture, the environment, and the citizens from the damaging effects of plant and honeybee pests and noxious weeds while facilitating domestic and international trade of plants, plant products, grain, seed, and agricultural commodities.

The Plant Pest Law gives this section the responsibility to detect and suppress insects, diseases, weeds, and other pests that threaten plants, crops, and the environment. Plant Industries has the authority to quarantine certain products, plants, and/or pests as necessary to carry out the task of preventing the spread of economically or environmentally important pests. In addition, this section reviews United States Department of Agriculture (USDA) permits submitted by private industry, universities, and the public to move plants and pests into the state from other countries or states. Other permitting responsibilities include biotechnology permits dealing with transgenic plants; post-entry quarantine permits; soil permits; state phytosanitary permits; and houseplant permits and inspections for people moving to another state.

The Cooperative Agricultural Pest Survey Program is conducted in cooperation with USDA Plant Protection and Quarantine and the University of Delaware Cooperative Extension Service. Surveys are conducted for non-native

pests and pests of export significance. This program will become the vehicle by which the department participates in the National Invasive Species Management Plan. To ship Delaware agricultural plants or plant products, pest information must be available to the country-of-destination. Plant Industries' personnel conduct export certification inspections and issue phytosanitary permits in order to facilitate Delaware businesses that export agricultural plant products.

The Nurseries and Nursery Stock Law is designed to prevent the introduction of unwanted, harmful plant pests to Delaware and to ensure that nursery stock shipped from or sold in the state is pest-free. The nursery industry is one of the fastest growing areas of agriculture in Delaware. More than 700 Nursery Industry Licenses are issued to businesses annually, increasing at a rate of five to ten percent each year. The Nursery and Greenhouse Industry is the fourth largest agricultural commodity group in Delaware with \$29.5 million in cash receipts in 1999.

The Gypsy Moth Suppression Program is a cooperative program between the USDA Forest Service and Plant Industries to help landowners deal with impacts caused by gypsy moth. Two-thirds of Delaware's forests are at risk to gypsy moth defoliation. Through this voluntary program, private landowners and state forestland managers contact Plant Industries to request fall egg mass surveys to determine if treatment is necessary to control leaf-feeding caterpillars the following spring. DDA currently surveys 45,000 acres of forested lands each year, based upon 200 to 300 annual landowner and state forestland manager requests.

The Noxious Weeds Law and regulations require that four species of noxious weeds be controlled in Delaware. There are an estimated 200,000 acres of land infested with one or more of these weeds, and 565,000 acres of farmland are at risk to infestation by these noxious weeds. When an area is found to be infested with Johnsongrass, Canada thistle, burcucumber, or giant ragweed, the landowner is contacted and informed that the infestation must be controlled. Between 300 and 700 Noxious Weed Compliance Agreements are signed each year by landowners and people responsible for tilling fields.

The Apiary Inspection Program requires anyone who plans to keep bees to annually register their colonies along with their location with the department. Bees and equipment are inspected annually for disease, mites, and Africanized bees. A technical advisory group has been formed to address public education issues and training for state and local authorities, including fire company personnel. The State Apiarist conducts numerous educational programs in schools and at other public events. Honeybees are responsible for the pollination of more than \$15 million worth of fruits and vegetables in Delaware.

# AGRICULTURE

65-00-00

The Seed Laboratory certifies granaries, and trains and licenses grain inspectors; provides seed testing services to farmers; collects official seed samples from stores offering seed for sale throughout the state to test and ensures the labeling conforms to the Seed Law and that the seed meets minimum standards; and conducts the Seed Certification Program. The primary crops tested are barley, wheat, and soybeans. Farmers also take advantage of the Seed Certification Program. The program ensures that Delaware certified seed maintains its varietal identity and is genetically pure. The retail value of seed that completed the certification process in 1999 was in excess of \$8 million.

## **Poultry and Animal Health**

It is the responsibility of the Poultry and Animal Health Section to be completely familiar with the disease status of all classes of animals -- livestock, pet, and exotic, as well as commercial poultry and pet birds. This applies, not only to the local situation, but also regionally and nationally as well. If there is a serious disease in another state or section of the country, the State Veterinarian may place importation restrictions or a total embargo on the affected species in an attempt to prevent the introduction of the disease into Delaware.

This section is charged with preventing the introduction and spread of contagious and infectious diseases into and within the animal and poultry population of the state. It accomplishes this by maintaining a diagnostic laboratory, as well as cooperating with the poultry diagnostic laboratory of the University of Delaware. Section personnel respond to reports of actual or potential disease problems from veterinarians and from livestock, poultry, and pet owners. Personnel visit farms, dairies, livestock auctions, etc. to collect various biological specimens for analysis and diagnosis of disease. In most instances, the veterinarian or owner is informed of the diagnosis, control, and/or treatment for the disease. When certain serious, highly contagious diseases are diagnosed, however, the State Veterinarian, through the authority given to the Secretary of Agriculture, may quarantine or even destroy the animal, herd, or flock to prevent the spread of that disease to other premises.

## **Thoroughbred Racing Commission**

The Delaware Thoroughbred Racing Commission regulates and oversees the sport of thoroughbred and Arabian racing for the protection of the betting public. The commission is also responsible for ensuring that the State and the betting public receive their fair percentages of the wagering dollars by overseeing periodic accounting audits. In addition, the commission oversees the conduct of the entire thoroughbred racing industry and may hold investigative hearings.

## **Weights and Measures**

This section is responsible for regulating all commercial transactions involving weighing or measuring; regulating all

devices used commercially to determine weight, measure, or count; and enforcing the Delaware Packaging and Labeling Regulations. Inspection of retail packages, gas pumps, fuel oil and propane meters, scales, grain moisture meters, point of sale scanning systems, parking meters and other timing devices, and field testing standards are the major activities of this section. This section provides both in-house and off-site training to businesses and service technicians throughout the state. The Voluntary Serviceperson Registration Program has enrolled almost 300 technicians, helping to ensure a higher degree of confidence in the accuracy and correctness of weighing and measuring devices used in Delaware.

## **Nutrient Management**

Pursuant to provisions of the 1972 Clean Water Act, the Delaware Department of Natural Resources and Environmental Control (DNREC) and the U.S. Environmental Protection Agency (EPA) signed a Memorandum of Understanding (MOU), which sets forth a plan to restore the quality of Delaware's impaired waters in order to achieve federal water quality standards. The MOU has made it necessary to develop and implement programs to reduce non-point source water pollution to bring water quality into compliance with legal standards. Studies have indicated that excess nutrient loading of surface lands has a negative effect on the quality of both surface and groundwater. The Nutrient Management Law (3 Del. C. c. 22) authorized the Delaware Nutrient Management Commission and the State Nutrient Management Program. The commission is charged with regulating those activities involving the generation and application of nutrients, establishing a certification program for best management practices (BMPs), and providing general direction to the State Nutrient Management Program.

## **Agricultural Land Preservation Foundation**

Since March of 1996, the Delaware Agricultural Lands Preservation Foundation has received nearly 800 applications to preserve farmland. There are now 129,497 acres and 522 farms in Agricultural Preservation Districts and District Expansions in Delaware. About 700 different families and organizations (titleholders) own these lands.

With the initial expenditures to date of \$69.5 million, 310 properties with over 65,000 acres have been permanently protected through the Purchase of Development Rights (PDRs). The Delaware Agricultural Lands Preservation Foundation recently appraised another 169 properties and some will be permanently protected in the near future.

# AGRICULTURE

65-00-00

## ADMINISTRATION 65-01-01

### ACTIVITIES

- Participate in and monitor strategies designed to protect agricultural lands in Delaware through the creation of Agricultural Districts and the purchase of development rights.
- Represent agriculture on councils and committees addressing natural resource projects, such as Livable Delaware Advisory Council, the Governor's Cabinet Committee on State Planning Issues, Open Space Council, Center for the Inland Bays, Delaware Nutrient Management Commission, and the Water Supply Coordinating Council.
- Oversee department budget development, presentation, and administration, as well as personnel management.
- Develop, present, and provide information for various legislative initiatives that affect agriculture in Delaware.
- Provide direction and leadership to the department and seek the input of the agricultural community in policy development. Act as a focal point for the discussion of topics from various groups and organizations representing segments of the agricultural community.
- Serve Delaware farmers and agribusinesses with leadership and education in the areas of marketing and promotion, in order to increase the sales and value of their products.

### PERFORMANCE MEASURES

	FY 2002 Actual	FY 2003 Budget	FY 2004 Gov. Rec.
# of students directly impacted by DDA Agriculture Education Presentations and Outreach	1,420	1,600	1,700
# Delaware agribusinesses/associations impacted by marketing programs/services	321	331	339

## AGRICULTURE COMPLIANCE 65-01-02

### ACTIVITIES

- Register agricultural products.
- Collect and submit to laboratory for analysis samples from the Delaware marketplace.

- Issue Violations and Withdrawal from Distribution Orders for non-registered products, mislabeled products, and nutrient deficiencies/excessives.
- License milk dealers who purchase milk from dairy farms across the state for employees who pick-up, measure and test milk from the dairy farms for payment purposes.
- Test fertilizer and livestock samples submitted by the general public.

### PERFORMANCE MEASURES

	FY 2002 Actual	FY 2003 Budget	FY 2004 Gov. Rec.
# of manure and fertilizer samples tested for nutrient content*	0	500	1,800
Turnaround time for final reports- # of days*	N/A	7	5
Response time for registration requests – # of days	2	1	1
Turnaround time from sample collection to final report:			
Official samples - # of days	43	35	20
Submitted samples - # of days	14	10	7
Products tested for contaminants (# of samples)	23	50	100

\* New performance measure for FY 2003.

## FOOD PRODUCTS INSPECTION 65-01-03

### ACTIVITIES

- Inspect meat and poultry and submit samples for laboratory analysis.
- Conduct systematic statewide monitoring of businesses in food marketing and distribution of both domestic and imported products for wholesomeness, adulteration, and labeling.
- Conduct statewide commodity grading at product point of origin.
- Provide food service safety training programs.

# AGRICULTURE

## 65-00-00

### PERFORMANCE MEASURES

	FY 2002 Actual	FY 2003 Budget	FY 2004 Gov. Rec.
# food services safety training programs*	18	19	18
Meet and poultry products inspected/condemned **			
Inspected (millions lbs)	4.2	5.0	5.5
Condemned (thousands lbs)	17.2	40.0	40.0
Compliance enforcement: trucking companies, retail stores, state agencies **			
# reviews	902	860	950
Product condemned (thousand lbs)	1.2	21.0	25.0
Processed poultry and shell eggs graded* (million lbs.)	355.1	364.0	370.0
Retail shell egg inspection and violations**			
# reviews	521	547	570
# violations	4	6	8

\* Voluntary

\*\* Mandatory

### **FOREST SERVICE**

**65-01-04**

#### ACTIVITIES

- Help private forest landowners and communities to better manage forest resources by providing advice, recommendations, and supervision, free of charge, to landowners for such activities as reforestation, timber stand improvement, forest management plans, and timber harvests.
- Provide tree planting and tree care recommendations to cities, towns, communities, homeowners, planners, engineers, and developers throughout Delaware.
- Oversee the competitive grant program, funded through the U.S. Forest Service, for tree planting and tree care on public property.
- Provide educational (Smokey Bear) programs to first-grade students (over 6,600 students in Fiscal Year 2002) and work with the Delaware Fire School, fire companies, and the U.S. Forest Service to train firefighters in wildland fire suppression techniques.
- Diagnose forest pest populations through annual aerial surveys and plot measurements, as well as periodic ground inspections.
- Assist loggers and landowners through site visits and educational programs to help ensure forest management activities follow best management practices (BMPs), and thus comply with the Delaware's Forest Practices Erosion and

Sedimentation Law and Seed Tree Law (3 Del. C. c. 10).

- Educate Delawareans about the importance of forests through activities on the state forests and visits to schools and other organizations.
- Increase the public's knowledge and understanding of forests and forest management.
- Provide educational programs that address all aspects of forest management to school children, civic groups, and other organizations including fire prevention (Smokey Bear) programs for first graders, an Arbor Day poster contest for grades K-5, forestry programs for landowners, and Project Learning Tree (PLT). PLT provides teachers with environmental lessons that they incorporate into their students' curriculum.

### PERFORMANCE MEASURES

	FY 2002 Actual	FY 2003 Budget	FY 2004 Gov. Rec.
% of timber harvests on non-industrial privately-owned lands which follow a forest management plan (acreage basis) (FY 1999 harvest approx. 4,000 acres)	10	15	20
% of communities provided urban forestry assistance (ed. activity, technical assistance, financial assistance, etc.) (83 communities total)	78	80	85
% of fire company districts provided wildland fire assistance (equipment, training, suppression assistance, etc.) (62 fire districts total)	79	80	85
% increase in number of participants in Forest Service educational programs compared to FY 2001. (12,800 participants in FY 2001)	6	10	20

### **HARNESS RACING COMMISSION**

**65-01-05**

#### ACTIVITIES

- In accordance with the Delaware Harness Racing Commission and United States Trotting Association guidelines, issue licenses in order to maintain a complete database on all participants at Delaware harness racing meets.
- Hold public meetings in order to better serve the harness racing industry, and to keep abreast of current racing changes, including proposed changes to the Delaware Rules of Racing and the operation of Harness Racing at the state's two harness tracks.

# AGRICULTURE

## 65-00-00

### PERFORMANCE MEASURES

	FY 2002 Actual	FY 2003 Budget	FY 2004 Gov. Rec.
Investigative cases	>100	>100	>100
% of background investigations	100	100	100

### **PESTICIDES**

**65-01-06**

#### ACTIVITIES

- Administer a licensing program for commercial pesticide applicators; provide certification and training for restricted use pesticide users; issue permits to dealers of restricted use pesticides sold in Delaware; register pesticide products sold or distributed in Delaware; and investigate complaints of pesticide use/misuse.
- Utilize large public events (i.e. State Fair) to educate consumers and homeowners on such topics as: food safety, integrated pest management, ground and drinking-water protection, and safe urban pesticide use. Maintain an active role in the EPA Urban Initiative to ensure safe pesticide use in urban environments.
- Increase opportunities for the certification and training of maintenance applicators (around schools, day-care centers, hospitals, apartment complexes), and pest control service technicians.
- Utilize e-Government and technology to improve customer service (i.e., online pesticide product registration), improve the section's efficiency (i.e. using personal digital assistants (PDAs) during inspections), and better inform and educate the general public (i.e., Internet webpage).
- Provide compliance assistance to the regulated community, and, as necessary, prosecute violations of the state and federal pesticide statutes. Cooperate with the U.S. EPA on pesticide cancellations; enforcement of 40 CFR, Part 170, Worker Protection Standards, producer establishment inspections; and other federal pesticide program initiatives.
- Reduce the potential for adverse exposure and environmental impact from the improper disposal of unused pesticides and empty pesticide containers by providing inspection and logistical support of a pesticide container recycling program.
- Monitor and assess the state's groundwater to ensure pesticides use does not degrade ground/drinking

water quality. Cooperate with other state and local agencies on broad water quality and quantity issues.

- Collect samples of local fresh-market fruits and vegetables to ensure any pesticide residues present meet human health standards.
- Protect consumers by inspecting termite pre-treatment applications, and termite treatments subject to the requirements set forth in Section 22 of the Delaware Pesticide Rules and Regulations.
- Cooperate with USDA in the enforcement of the federal pesticide record keeping requirements.
- Petition U.S. EPA for special local need registrations for pesticides and for emergency exemptions to control pest outbreaks.

### PERFORMANCE MEASURES

	FY 2002 Actual	FY 2003 Budget	FY 2004 Gov. Rec.
# of pesticide use investigations resulting in enforcement	16	16	16
% of total laboratory analyses supporting env. or health	90	90	90
% of total laboratory analyses supporting investigations	90	90	90
Certified Pesticide Applicator training events monitored	390	390	390
# of pesticide containers recycled	3,650	3,650	3,650

### **PLANNING**

**65-01-07**

#### ACTIVITIES

- Review all land consumptive development projects in Delaware, assess the impacts to agriculture, and advocate for mitigation of negative impacts.
- Provide strategic planning consultation to the department.
- Provide reliable, current agricultural statistics and analysis to a variety of customers.

### PERFORMANCE MEASURES

	FY 2002 Actual	FY 2003 Budget	FY 2004 Gov. Rec.
% zoning and subdivision proposals affecting agriculture reviewed	100	100	100



# AGRICULTURE

65-00-00

## ***PLANT INDUSTRIES*** ***65-01-08***

### ACTIVITIES

- Provide on-going public education activities for all of Plant Industries programs.
- Continue biological control programs for invasive pest species.
- Administer the Gypsy Moth Survey and Suppression Program while maintaining the infrastructure during low-level population cycles, making certain DDA is prepared for any new outbreaks.
- License and inspect all nursery businesses and conduct certification inspections for nursery stock shipped interstate or for export.
- Detect and control noxious weed infestations through implementation of compliance agreements. Provide specialized spray equipment to the public for the application of herbicides.
- Register and inspect all honeybee colonies for diseases, mites, and Africanized bees. Assist the beekeeping industry with promotion and education programs, and implement state management plan.
- Assist and cooperate with USDA Plant Protection & Quarantine regarding: export certification of plants and plant products; processing permits for the interstate movement of plant pests; inspections of fields and facilities for agricultural biotechnology permits; post-entry quarantine inspections; processing permits for the interstate movement of soil; enforcement of federal and state quarantines; and administer and conduct the Cooperative Agricultural Pest Survey Program.
- Survey and monitor other insect and plant disease pests that threaten Delaware's agricultural, horticultural, forestry, and environmental resources.
- Maintain state grain inspection standards for all certified granaries, and provide training to inspectors.
- Operate the Seed Certification Program and test all types of seed offered for sale to determine compliance with the Seed Law.
- Develop and implement a state policy and plan to deal with non-native invasive species in conjunction with the Delaware Invasive Species Council.
- Maintain cooperative program with Pennsylvania, Maryland, and New Jersey to research and implement strategies to deal with the parasitic mite syndrome affecting honeybees.
- Enforce the Federal Plant Varietal Protection Act.

- Implement a Plant Industries Health and Safety Plan that encompasses all of the section's Standard Operating Procedures.

### PERFORMANCE MEASURES

	FY 2002 Actual	FY 2003 Budget	FY 2004 Gov. Rec.
# of quarantine pests found in Delaware	0	0	0
Certified acres inspected	10,000	10,000	10,000
% of businesses inspected for Seed Law compliance	65	65	65
% of retail nursery locations inspected	55	65	65
% response to quarantined pest violations at retail locations	80	100	100
% of acres infested with noxious weeds treated or under a control program	73	73	74
# of registered bee colonies inspected	1,100	1,100	1,100
% of USDA Biotechnology Notifications meeting DDA requirements and reviewed within 10 days	100	100	100
% of approved regulatory permits meeting DDA requirements and reviewed within 10 days	100	100	100

## ***POULTRY AND ANIMAL HEALTH*** ***65-01-09***

### ACTIVITIES

- Prevent the spread of infectious and contagious diseases, including those transmitted from animal to man.
- Protect the health status of the poultry industry by collecting avian influenza monitoring samples at live poultry auctions.
- Ensure the safety of the milk supply from Delaware dairy herds by performing brucellosis tests; and safeguard the public from Salmonella contamination.
- Assist Delmarva broiler companies in placing healthier and less contaminated baby chicks in the field by collecting and completing hatchery sanitation samples.
- Provide competent diagnostic services for the detection of animal and poultry diseases by performing diagnostic procedures.

# AGRICULTURE

## 65-00-00

### PERFORMANCE MEASURES

	FY 2002 Actual	FY 2003 Budget	FY 2004 Gov. Rec.
% of human exposure rabies specimens with same-day turnaround time	100	100	100
Attend specific interactive encounters with state, federal or industry groups aimed at the prevention and/or mitigation of a Foot and Mouth Disease outbreak in Delaware herds or flocks*	6	6	7
Carry out a meaningful and informative hatchery sanitation program, thereby keeping local poultry industry Salmonella isolations to a minimum number**	66	70	75

*\*These encounters would include meetings, tabletop or field exercises or video conferencing lectures where there is active sharing of ideas, standard operating procedures and national policy guidelines aimed at the exclusion of FMD from this country.*

*\*\*Hatchery sanitation program provides hatchery operators with "early warning" information on the cleanliness of their operation. By limiting the exposure of baby chicks to Salmonella infection in the hatchery, the amplification of this infection in a broiler house is minimized, thus leading a safer end product for human consumption.*

### **THOROUGHBRED RACING COMMISSION** **65-01-10**

#### ACTIVITIES

- Hold public meetings in order to better serve the thoroughbred racing industry, and to keep abreast of current racing changes, including proposed changes to the Delaware Rules of Racing and the operation of Thoroughbred Racing at Delaware Park.
- Review appeals of stewards' rulings.
- Issue licenses in accordance with recently passed legislation, to eventually be included in a complete database system for use by the commission.

### PERFORMANCE MEASURES

	FY 2002 Actual	FY 2003 Budget	FY 2004 Gov. Rec.
Investigative cases	>100	>100	>100
% of background investigations	100	100	100

### **WEIGHTS AND MEASURES** **65-01-11**

#### ACTIVITIES

- Inspect gasoline, diesel, and kerosene pumps for compliance with national standards.

- Inspect small and medium commercial scales for compliance with national standards commonly found in supermarkets or medium scales used for livestock and feed.
- Inspect large capacity commercial scales for compliance with national standards including those to weigh vehicles at recycling centers, granaries, etc.
- Inspect commercial home delivery fuel oil and propane trucks for compliance with national standards.
- Inspect consumer packages for compliance with regulations and computerized scanning devices for accuracy.
- Inspect grain moisture meters used in determining the value of grain sold and purchased in the state.
- Inspect a statistical sampling of various timing devices to serve consumers in the state including parking meters, laundromats, car washes, and air pumps.
- Respond to consumers, within 24 hours, who register a complaint concerning a possible violation of Weights and Measures Law, a questionable marketing practice, or an incorrect device.
- Administer the Delaware Voluntary Serviceman Registration Program for approved servicemen that demonstrate proficiency in their field and fulfill program requirements.
- Provide resources and materials to consumers and businesses to increase awareness of Weights and Measures issues.

### PERFORMANCE MEASURES

	FY 2002 Actual	FY 2003 Budget	FY 2004 Gov. Rec.
# consumer complaints	42	50	60
# consumer education presentations	3	5	7
% of small scales tested	86	79	72
% of large scales tested	86	92	100
% of Motor Truck Scales tested	89	89	87
% of Petroleum Devices tested	94	87	79
% of Propane Meters tested	67	67	61
# Cash Register Scanner tested	11,543	10,000	9,000
# Scale technicians licensed	147	170	200
# Liquid technicians licensed	83	100	120

# AGRICULTURE

## 65-00-00

### ***NUTRIENT MANAGEMENT*** **65-01-12**

#### ACTIVITIES

- Provide on-going public education activities for all nutrient management programs.
- Administer certification program by distributing relevant information.
- Capture a distribution database for known and potential individuals impacted by the Nutrient Management Program.
- Clearly identify all standards for processing applications and subsidies for nutrient management programs.
- Maintain communication flow to federal, state, and local agencies regarding state nutrient issues and updates.

#### PERFORMANCE MEASURES

	FY 2002 Actual	FY 2003 Budget	FY 2004 Gov. Rec.
Annual tons of manure transported within the Delmarva Peninsula	11,567	10,000	10,000
Annual tons of manure exported from the Delmarva Peninsula	28,746	50,000	28,000
Total % of nutrient applied land managed under a nutrient management plan	40	50	50
Annual % of nutrient management plans evaluated for content, quality control, and implementation	10	10	10
# of current certified nutrient management consultants*	61	100	75
# of current certified nutrient generators*	348	1,500	500
# of current certified nutrient handlers*	817	300	1,000
# of certification and educational events	75	115	50
# of on-going research and demonstration sites	29	29	29
# of awards presented for environmental stewardship	12	15	15

*\*Certification must be completed by 2004, figures vary due to enrollment.*

### ***FOUNDATION*** **65-01-13**

#### ACTIVITIES

- Operate the Farmland Preservation program of Agriculture Districts and the purchase of development rights.

#### PERFORMANCE MEASURES

	FY 2002 Actual	FY 2003 Budget	FY 2004 Gov. Rec.
Acres of prime Delaware farmland permanently preserved	6,000	5,300	20,000