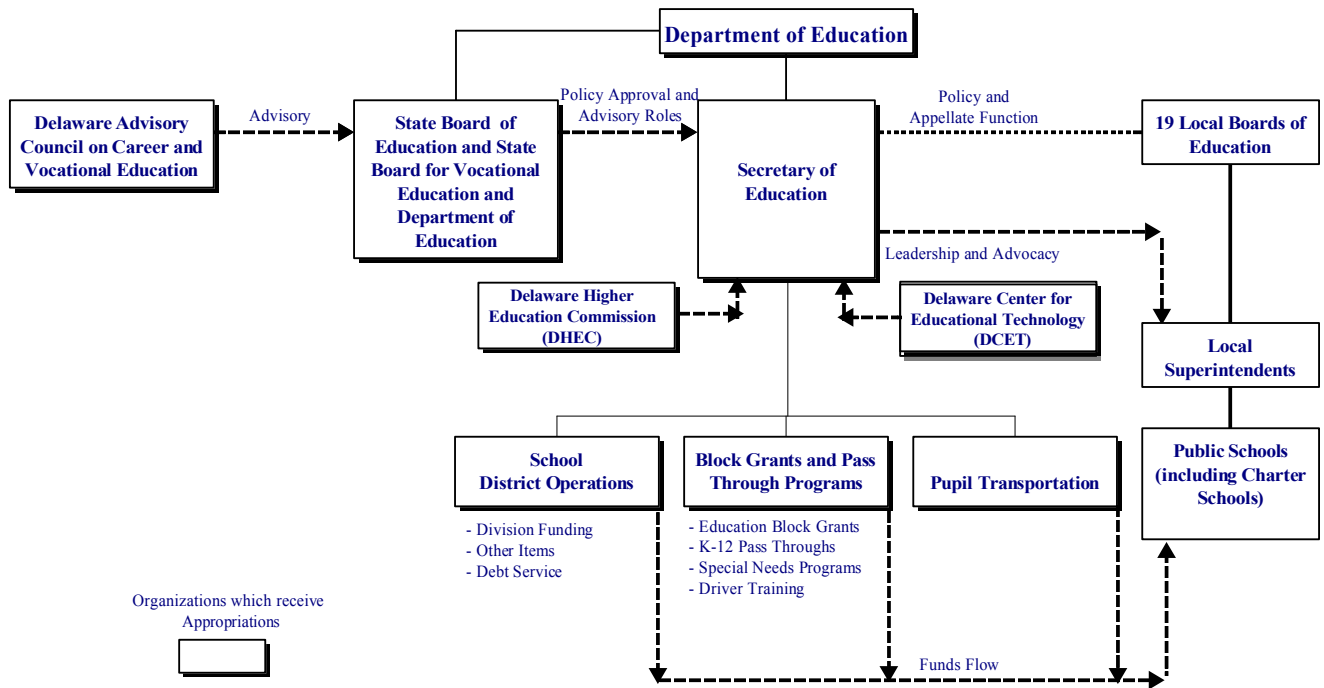


# EDUCATION

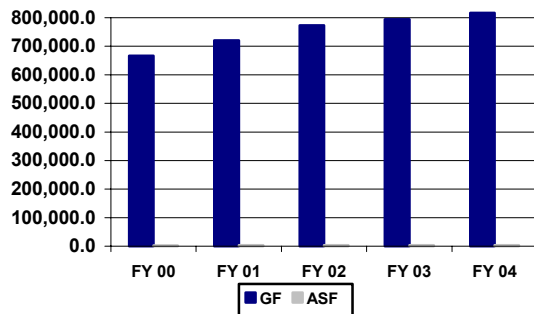
## 95-00-00



### MISSION

To promote the highest quality education for every Delaware student by providing visionary leadership and superior service.

Five-Year Appropriation History



### FUNDING

	FY 2003 ACTUAL	FY 2004 BUDGET	FY 2005 GOV. REC.
GF	839,948.0	816,596.2	866,431.8
ASF	2,542.7	3,511.8	13,546.8
<b>TOTAL</b>	<b>842,490.7</b>	<b>820,108.0</b>	<b>879,978.6</b>

### POSITIONS

	FY 2003 ACTUAL	FY 2004 BUDGET	FY 2005 GOV. REC.
GF	10,803.9	10,901.9	11,014.9
ASF	8.0	8.0	8.0
NSF	68.3	70.3	70.6
<b>TOTAL</b>	<b>10,880.2</b>	<b>10,980.2</b>	<b>11,093.5</b>

### FY 2005 BUDGET HIGHLIGHTS

#### OPERATING BUDGET:

##### State Board of Education / Department of Education

- ◆ Recommend inflation and volume adjustments of \$200.0 in Contractual Services to cover lease costs of additional space and \$1.3 in Teacher of the Year to cover increase in other employment costs.
- ◆ Recommend one-time funding of \$50.0 in the Budget Office's contingency for a Full-Day Kindergarten Implementation study.

##### Division Funding

- ◆ Base adjustments include 12.0 FTEs in Division I-Formula Salaries for actual unit growth over 90.0 units budgeted in Fiscal Year 2004 for the 2003-2004 school year, and 100.0 FTEs for projected growth in the 2004-2005 school year.

## EDUCATION

95-00-00

- ◆ Recommend inflation and volume adjustment of \$650.0 in Division III-Equalization as a placeholder for potential adjustments to the formula.

### Other Items

- ◆ Recommend inflation and volume adjustment of \$233.9 in Delmar Tuition to cover increase in cost of educating students based on Maryland Delaware Agreement.
- ◆ Recommend inflation and volume adjustment of \$5,985.8 in General Contingency for projected unit growth of 100.0 Division, I, II and III units in the 2004-2005 school year.
- ◆ Recommend structural changes of \$1,200.0 from Division I-Formula Salaries (95-02-01) and \$900.0 from Educator Accountability (95-01-01) to Skills, Knowledge and Responsibilities Pay Supplements to reallocate funds for supplemental pay associated with National Board Certified Teachers and mentor stipends.
- ◆ Recommend enhancement of \$950.0 in Skills, Knowledge and Responsibilities Pay Supplements for pay supplements associated with professional development clusters.
- ◆ Recommend enhancement of \$9,000.0 ASF in Federal Fiscal Relief – Textbooks and Technology Initiative and \$1,000.0 ASF in Federal Fiscal Relief – Full Day Kindergarten Implementation Fund.

### Education Block Grants

- ◆ Recommend enhancement of \$300.0 in Adult Education/Work Force Training to eliminate the existing waiting list.
- ◆ Recommend enhancement of \$50.0 in Accountability and Advancement to expand the Alternative Routes to Certification Programs to include Special Education.
- ◆ Recommend enhancement of \$550.0 in Accountability and Advancement to increase tuition reimbursement funding to include paraprofessionals.

### K-12 Pass Through Program

- ◆ Recommend inflation and volume adjustment of \$25.0 in Summer School/Gifted and Talented to cover increase in salary costs.

### Special Needs Programs

- ◆ Base adjustments include \$775.0 in Student Discipline Program to annualize funding for the alternative school program in New Castle County.
- ◆ Recommend inflation and volume adjustment of \$100.5 in Student Discipline for Part II funding of

two new schools anticipated to open during Fiscal Year 2005.

- ◆ Recommend inflation and volume adjustment of \$550.0 in Unique Alternatives for projected increase in number of placements and cost of programs.
- ◆ Recommend enhancement of \$3,875.5 in Reading Resource Teachers to fully implement one teacher in each school with a grade configuration including any combination of grades Kindergarten through Fifth.

### Driver Training

- ◆ Recommend inflation and volume adjustment of \$60.8 in Driver's Education for projected increase in number of students and maintenance costs.

### Pupil Transportation

- ◆ Recommend inflation and volume adjustment of \$1,201.2 in Public School Transportation, which includes \$24.3 for depreciation allowance; \$176.5 for increase in insurance; \$289.3 for increase in other costs; \$326.9 for fuel adjustments; \$168.4 for adjustments in other employment costs; \$252.0 for choice/charter transportation; and (\$36.2) for capital outlay.
- ◆ Recommend enhancements of \$478.0 in Public School Transportation for ten new routes and \$250.0 in Public School Transportation for unfunded federal mandate on transportation of homeless students.

### Delaware Higher Education Commission

- ◆ Recommend inflation and volume adjustment of \$15.0 in Scholarships and Grants for tuition and fee increases, which includes \$5.0 for B. Brad Ford Barnes and \$10.0 for Herman S. Holloway, Sr. Scholarship programs.
- ◆ Recommend inflation and volume adjustment of \$36.1 in Scholarships and Grants for the Charles L. Hebner Scholarship program. This includes \$29.8 for final year phase-in and \$6.3 for tuition and fee increases.
- ◆ Recommend enhancement of \$50.0 in Scholarships and Grants for the Delaware Teacher Corps program to assist with recruitment into the teaching profession.

### CAPITAL BUDGET:

- ◆ Recommend \$119,300.0 for public education projects. These funds will be used for school construction projects in the following school districts: Appoquinimink, Brandywine, Caesar

## EDUCATION

95-00-00

Rodney, Cape Henlopen, Christina, Indian River, New Castle County Vo-Tech, Polytech, and Red Clay.

### STATE BOARD OF EDUCATION AND STATE BOARD FOR VOCATIONAL EDUCATION AND DEPARTMENT OF EDUCATION 95-01-00

#### KEY OBJECTIVES

In cooperation with districts and schools, increase the percentage of students meeting Delaware standards, thereby improving student readiness for postsecondary education and work.

- Improve the percentage of Delaware's public school students who attain proficiency or better in reading, writing and mathematics.
- Increase the number of schools that make Adequate Yearly Progress.
- Increase the percentage of students in core academic areas that are taught by highly qualified teachers.
- Continue to increase the percentage of students educated in learning environments that are safe, drug free and conducive to learning.
- Continue to increase the percentage of students who graduate from high school.
- Increase the number of students with disabilities that are effectively included in general education classrooms.
- Increase the number of Delaware students and residents pursuing post-secondary school opportunities and adult education programs.

Design, develop and implement information systems to enhance the daily operations of the Department of Education, school districts and schools.

- Continue to develop and implement an electronic data collection system to ensure data is collected, compiled and warehoused only once by the department.
- Provide computer-based units of instruction aligned to Delaware content standards.

Pursue the removal of financial and structural barriers to reform.

- Continue to work toward the goal of equalized funding and a more efficient accounting system for school districts.

**EDUCATION**  
**95-00-00**

- Continue to monitor federal regulations and align department regulations as needed.
- Continue to provide web-based education information to stakeholders.

Implement and sustain ancillary and supplemental services to students, districts, educational organizations, human service agencies and the Department of Education, to ensure optimal student learning and growth.

- Ensure the availability of safe transportation to public school for all eligible students.
- Provide sound nutritional programs to promote good health in schools, child and adult day-care centers, residential facilities, and children's summer programs.
- Continue to make available a comprehensive array of integrated, educationally related services to provide full support for local district and school program planning and implementation.

Improve district, school and agency satisfaction regarding the quality of department leadership, service and communication.

- Incorporate customer satisfaction feedback into annual goal-setting to ensure continuous improvement.

**FUNDING**

	FY 2003 ACTUAL	FY 2004 BUDGET	FY 2005 GOV. REC.
GF	21,130.9	23,518.0	23,555.0
ASF	590.0	1,009.3	1,009.3
<b>TOTAL</b>	<b>21,720.9</b>	<b>24,527.3</b>	<b>24,564.3</b>

**POSITIONS**

	FY 2003 ACTUAL	FY 2004 BUDGET	FY 2005 GOV. REC.
GF	117.7	119.7	119.7
ASF	2.0	2.0	2.0
NSF	68.3	70.3	70.6
<b>TOTAL</b>	<b>188.0</b>	<b>192.0</b>	<b>192.3</b>

**STATE BOARD AND SECRETARY OF EDUCATION  
AND DEPARTMENT OF EDUCATION  
95-01-01**

**ACTIVITIES**

**Secretary of Education and State Board of Education**

This unit provides for the general administration and supervision of Delaware public schools through the following:

- Determining the educational policies of the state;
- Consulting and cooperating with the local boards of education and their employees;
- Providing general supervision in designing educational facilities;
- Surveying the educational needs of the state and identifying the means for improving educational conditions;
- Adopting rules and regulations for the maintenance, administration and supervision of a general and efficient statewide system of public schools; and,
- Managing department operations including human resources, legal services, policy development and implementation and strategic planning.

**Finance and Administrative Services**

The Finance and Administrative Services branch implements services and activities including:

- Allocating and overseeing the administration of state, federal and appropriated special funds;
- Data acquisition and reporting;
- School plant planning including major and minor capital improvement programs;
- Transportation for public and private schools;
- Health services;
- School choice;
- Food and nutrition services;
- Financial management; and,
- School support services.

**Curriculum and Instructional Improvement**

The Curriculum and Instructional Improvement branch works collaboratively with schools and districts to improve student achievement. These activities include:

- Curriculum development;
- Charter schools;
- Professional development;
- Science Resource Center including the Smithsonian Project and Science Van;
- Special education;
- Early childhood initiatives;

# EDUCATION

## 95-00-00

- Office of Early Care and Education;
- Reading First and Early Literacy;
- Administrative complaints and due process;
- Title I programs including Quality Review and School Improvement;
- ESL programs;
- Homeless and migrant programs;
- School guidance; and,
- Parent involvement.

### Assessment and Accountability

The Assessment and Accountability branch oversees and provides leadership and assistance for statewide student assessment and educator accountability. These activities include:

- Development and delivery of the Delaware Student Testing Program (DSTP);
- Analysis and reporting of student, school, district and state test results;
- Training of the school district test coordinators;
- Certification of state-approved assessments;
- Oversight of student, school and district accountability requirements;
- Technical assistance and professional development for assessment and accountability;
- Requirements for test inclusion for students with disabilities or limited English proficiency;
- Administer educator licensure and certification, alternate routes to teacher certification, new educator mentoring programs and National Board Certification for teachers;
- Oversight and revision of the Delaware Performance Appraisal System (DPAS);
- Administration of educational services for veterans;
- Staff coordination for the Delaware Principals Academy; and,
- Technology management and design.

### Adult Education and Work Force Development

The Adult Education and Work Force Development branch provides a variety of services to the community and schools which include:

- Adult education, including prison education, Adult Basic Education, Groves High School, Even Start and Family Literacy programs;
- Delaware Interscholastic Athletic Association;
- Career and technical education;
- Delaware Center for Educational Technology;
- School discipline and emergency preparedness; and,
- Driver and physical education.

### PERFORMANCE MEASURES

The following tables depict student performance in reading, mathematics and writing for 2000, 2001, 2002 and 2003, as measured by the percentage of students meeting the state standard across the four program years. The 2000 school year data was calculated to include a lesser number of students with disabilities.

#### Reading – Meeting the Standard

	2000	2001	2002	2003
<b>Grade 3</b>	77%	74%	79%	79%
<b>Grade 5</b>	69%	67%	78%	78%
<b>Grade 8</b>	67%	66%	72%	70%
<b>Grade 10</b>	61%	60%	66%	67%

#### Mathematics – Meeting the Standard

	2000	2001	2002	2003
<b>Grade 3</b>	73%	71%	72%	74%
<b>Grade 5</b>	62%	62%	67%	71%
<b>Grade 8</b>	41%	40%	48%	47%
<b>Grade 10</b>	36%	35%	43%	45%

#### Writing – Meeting the Standard

	2000	2001	2002	2003
<b>Grade 3</b>	37%	33%	46%	39%
<b>Grade 5</b>	35%	51%	49%	60%
<b>Grade 8</b>	51%	67%	72%	78%
<b>Grade 10</b>	48%	57%	49%	73%

The Department of Education utilizes rankings from the Stanford Achievement Test, Ninth Edition (SAT9) reading comprehension subtest that is part of the DSTP to reflect how Delaware students compare to their national peers. Delaware students have performed at or above the national average (50<sup>th</sup> percentile) in grades three, five and eight, but below the national average in grade ten. Percentile ranks for all grades have improved over the four testing years.

#### Reading – National Percentile

	2000	2001	2002	2003
<b>Grade 3</b>	62%	64%	66%	67%
<b>Grade 5</b>	56%	57%	59%	59%
<b>Grade 8</b>	60%	61%	62%	62%
<b>Grade 10</b>	45%	46%	47%	48%

In 2002 and 2003, Delaware students in all test grades performed above or at the national average in mathematics. In addition, Delaware students in grades three, five and ten improved their performance in mathematics each year relative to that of their national counterparts. Eighth graders performed at the same percentile as 2002.

**EDUCATION**  
**95-00-00**

**Mathematics – National Percentile**

	2000	2001	2002	2003
<b>Grade 3</b>	68%	70%	73%	74%
<b>Grade 5</b>	62%	64%	68%	70%
<b>Grade 8</b>	54%	55%	60%	60%
<b>Grade 10</b>	49%	52%	57%	61%

School, district and state accountability is a primary component of Delaware's educational reform and the national reform effort. Student performance in reading/language arts and mathematics, as well as, science and social studies combined, and graduation rates determine accountability ratings. The reading/language arts target for 2003 was 57 percent meeting/exceeding the standards. The mathematics target for 2003 was 33 percent meeting/exceeding the standards. For accountability purposes, the school or district must meet these targets for each subgroup of students (race/ethnicity, children with disabilities, children with limited English proficiency (LEP) and economically disadvantaged students.) In addition, schools and districts must maintain or show progress on the other indicators.

	2000-01 school year	2001-02 school year	2002-03 school year
Average daily attendance as a % of average daily membership	93.3	93.6	93.7
# students attending charter schools	2,732	4,239	5,074
# students utilizing school choice	19,412	17,547	21,218

**SCHOOL DISTRICT OPERATIONS**  
**95-02-00**

**FUNDING**

	FY 2003 ACTUAL	FY 2004 BUDGET	FY 2005 GOV. REC.
GF	1,400.1	620,821.4	659,745.7
ASF	--	--	10,000.0
<b>TOTAL</b>	<b>1,400.1</b>	<b>620,821.4</b>	<b>669,745.7</b>

**POSITIONS**

	FY 2003 ACTUAL	FY 2004 BUDGET	FY 2005 GOV. REC.
GF	10,619.0	10,717.0	10,829.0
ASF	--	--	--
NSF	--	--	--
<b>TOTAL</b>	<b>10,619.0</b>	<b>10,717.0</b>	<b>10,829.0</b>

***DIVISION FUNDING***  
***95-02-01***

**ACTIVITIES**

This unit contains the funding lines for school district operations including Division I (salary and employment costs), Division II (energy and all other costs) and Division III (equalization).

***OTHER ITEMS***  
***95-02-02***

**ACTIVITIES**

This unit contains funding for Delmar Tuition which provides funding for the imbalance in the cost of students from Delaware sent to Maryland schools and Maryland students sent to Delmar, Delaware; the General Contingency, which provides for annual unit growth; and other miscellaneous items.

***DEBT SERVICE***  
***95-02-03***

**ACTIVITIES**

This unit contains funding for the payment of state debt service on the Capital Improvement Program.



# EDUCATION

## 95-00-00

### BLOCK GRANTS AND PASS THROUGH PROGRAMS 95-03-00

#### FUNDING

	FY 2003 ACTUAL	FY 2004 BUDGET	FY 2005 GOV. REC.
GF	19,762.2	106,574.1	115,365.2
ASF	1,083.9	2,502.5	2,537.5
<b>TOTAL</b>	<b>20,846.1</b>	<b>109,076.6</b>	<b>117,902.7</b>

#### POSITIONS

	FY 2003 ACTUAL	FY 2004 BUDGET	FY 2005 GOV. REC.
GF	50.2	48.2	49.2
ASF	6.0	6.0	6.0
NSF	--	--	--
<b>TOTAL</b>	<b>56.2</b>	<b>54.2</b>	<b>55.2</b>

### EDUCATION BLOCK GRANTS 95-03-10

#### ACTIVITIES

#### Adult Education and Work Force Training Block Grant

This block grant is used to fund the following programs: Adult Trade Extension/Apprentice Program, James H. Groves High School, Diploma-at-a-Distance, Adult Basic Education, New Castle County Learning Center, Delaware Skills Center, Alternative Secondary Education Program, Interagency Council on Adult Literacy, Communities in Schools Program and the Marine Mechanics Apprentice Program.

Beginning in Fiscal Year 2000, Prison Education became the responsibility of the department as a component of Delaware's Adult Education Program. Major instructional programs now include Adult Basic Education, GED Program, James H. Groves Adult High School Program, Vocational Skills Program and Life Skills training. Related programs and services include English as a Second Language, Special Education and a Media Resource Center. A postsecondary education program was initiated in 2001. To date, 280 individuals have taken 13 courses.

#### Professional Accountability and Instructional Advancement Fund

This block grant contains funding for several Department of Education allocations for professional development including Alternative Routes to

Certification, National Board Certification, Curriculum Development, Professional Mentoring, the Delaware Principals Academy and Summer School for Teachers.

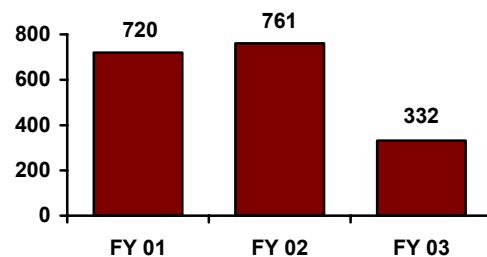
#### Academic Excellence Block Grant

The Academic Excellence Block Grant currently provides districts one unit for each 250 pupils. Districts may use these funds for a variety of purposes.

The second portion of this block grant provides an allocation of approximately \$615 per Division I unit for district computer grants, homebound instruction, substitute teachers, nurse staffing, student work study, conflict resolution training and extended day or year services.

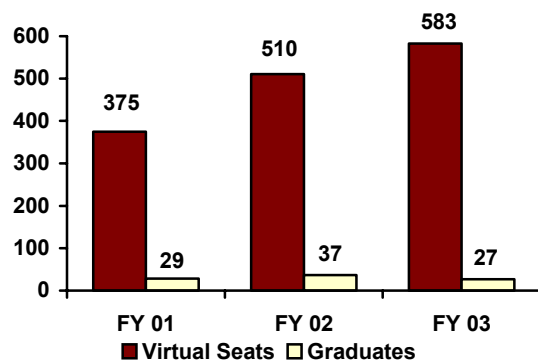
#### PERFORMANCE MEASURES

##### GEDs Awarded



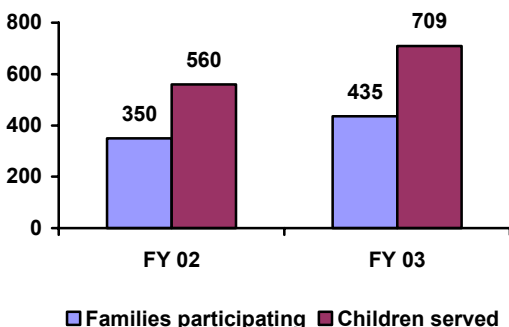
*The number of GEDs awarded has decreased from FY 2002 because the GED has been made more rigorous and requires a longer time for preparation. The Delaware pass rate on the GED test is the highest in the nation at 96 percent.*

##### Diploma At A Distance

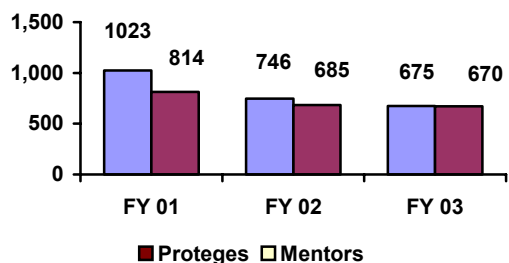


## EDUCATION 95-00-00

**Even Start- Family Literacy**



**Teacher Mentoring Participation**




---

### ***K-12 PASS THROUGHS*** ***95-03-15***

---

#### ACTIVITIES

This unit provides funding for programs that are operated by various agencies, with funding passed through the Department of Education.

- **Delaware Nature Society** offers summer courses to gifted middle school students in areas such as Freshwater Aquatic Biology, Estuarine Ecology, a Native American Program and Environmental Heritage.
- **Children's Beach House** offers environmental education programs for moderately handicapped and gifted and talented students. The program offers day field trips and overnight accommodations.
- **READ ALOUD Delaware** is a private, nonprofit corporation devoted to the elimination of illiteracy in Delaware. The program attempts to provide the opportunity for each preschool child in Delaware to be read to on a regular and sustained basis.
- **NCCJ (National Council for Community and Justice)** offers programs which teach students and teachers self-respect and respect for each other.

- Students are also taught to be responsible for their own behavior.
- **Summer School - Gifted and Talented** exposes student participants to intense study in either the cognitive or visual performing arts for one week. This residential program invites gifted high school juniors and is held at the University of Delaware.
- **Center for Economic Education**, operated by the University of Delaware, provides pre-service training in economics to potential teachers, as well as elementary and secondary programs in economics for teachers.
- **Educational Resources Program** provides career counseling and job information programs for students. Activities include student career awareness programs, orientation tours of business and industry, student and teacher internships, and the opportunity to discuss areas of mutual concern.
- **Delaware Institute for Arts in Education** offers a two-week summer workshop on the arts for teachers. It also offers assistance in planning curriculum in the arts and provides follow-up work in these areas.
- **Advanced Studies** for academically gifted high school seniors provides a team teaching approach using University of Delaware faculty members and public secondary teachers.
- **Student Organizations** provides funding for the activities of a number of youth organizations such as Vocational Industrial Clubs of America and Student Councils. The funds provide training, competitions and travel to national conventions for members of these organizations.
- **Parents as Teachers** provides services to parents raising their first child. Contact is made in the period of the last trimester of pregnancy through four months of age. The program provides home visits and group meetings until the child reaches three years of age.
- **Pregnant Students** provides the education component to pregnant students in the Delaware Adolescent Program, Inc.
- **Delaware Teacher Center** is designed to respond to teacher in-service training requests. All courses are designed by and for teachers.
- **Reading Assist** is an innovative program aimed at reading, writing and spelling for children who do not learn through traditional methods.
- **Smithsonian Project** provides specific professional development to elementary and middle school teachers in the area of science, for integration into the curriculum for students. The funding allocation also covers the expenses of purchasing and/or refurbishing science kits, which provide teachers



## EDUCATION

95-00-00

with specific activities to lead and enable students to learn, through hands-on classroom experience.

- **Delaware Geographic Alliance** supports teachers in their efforts to strengthen and improve the teaching of geography in alignment with the state geography content standards.
- **Jobs for Delaware Graduates** provides specialized services to at-risk youth in Delaware high schools. The four-year program is designed to keep students in school and provide a broad range of skills to improve employability upon graduation.
- **Online Periodicals** provides online, full text periodicals to all Delaware public high schools and middle schools through the University of Delaware.
- **Creative Mentoring** provides training for in-school volunteer mentors. The goal of the training is to ensure that a mentor can maximize the benefit of their time with a student.
- **Delaware History Day Competition** is a year-long education program that meets and exceeds all national and state social studies standards for students in grades 6-12. Students select a topic relating to a yearly national theme and conduct research in primary and secondary materials. Students then put together a presentation that presents their research and they could possibly represent their school at the state and national level.

---

### *SPECIAL NEEDS PROGRAM*

*95-03-20*

---

#### ACTIVITIES

This unit contains programs related to special needs students.

- **Program for Children with Disabilities** provides educational services to developmentally delayed three- to five-year-old children. The appropriation is allocated by the Interagency Resource Management Committee (IRMC) which consists of representatives from several state agencies. The IRMC assesses proposals for service delivery annually and monitors ongoing efforts in this area.
- **Related Services for the Handicapped** provides one unit for each 30 units of handicapped students, excluding those units for autistic, severely mentally handicapped, deaf/blind, orthopedically handicapped and hearing impaired. This unit provides such services as speech therapy, occupational therapy, physical therapy or special counseling services.
- **Unique Alternatives** provides for the placement of special needs children in private settings when there

is no suitable program to serve them in Delaware public schools, and also provides alternative education formats within districts.

- **Adolescent Day Program** is a hospital-based, day program for adolescents located at the Medical Center of Delaware in Christiana. It serves students with chronic and degenerative conditions in an educational and therapeutic environment. The educational component of this program is operated by the Red Clay School District.
- **Sterck Summer Program** is a summer program for students at Sterck School for the Deaf.
- **Tech-Prep 2 + 2** is the state consortium on technical preparation programs.
- **Student Discipline Programs** provide alternative school sites for severely disruptive pupils. These programs provide grants for school-based intervention programs for moderately disruptive pupils, as well as for community-based and school-based prevention programs.
- **Early Childhood Assistance** provides early childhood educational services to eligible four-year-old children living in poverty.
- **Extra Time for Students** provides additional instructional time outside of the regular school day or year for students underachieving in the four core content areas (Mathematics, Science, Social Studies and English/Language Arts).
- **Exceptional Student Unit Vocational** continues the program of vocational education for handicapped students.
- **Children Services Cost Recovery Project** is a program aimed at the recovery of Medicaid funds for reimbursable services that are currently being provided.
- **First State School** serves children with health conditions so severe they are not able to attend school on a regular basis.
- **Reading Resource Teachers** are provided to schools serving grades K-5 to improve reading performance.
- **Innovative After-School Initiatives** fund pilot programs in grade 5-10 that are developed to provide additional academic support and enhancement for students.
- **Prison Education Programs** provide a variety of educational services including adult basic education, GED, Groves High School and vocational and life skills programs.

# EDUCATION

## 95-00-00

### PERFORMANCE MEASURES

#### School Conduct Report

	1999-00 school year	2000-01 school year	2001-02 school year
Federal gun-free violations (students)	6	13	21
Reporting School Crimes Law violations (students)	1,940	1,917	1,910
Expulsions for Reporting School Crimes Law violations	91	88	108

### *DRIVER TRAINING* 95-03-30

#### ACTIVITIES

This unit provides funding for driver education teachers for nonpublic school students, summer students and operation and maintenance of driver education cars in both public and nonpublic schools.

### PERFORMANCE MEASURES

#### Students Completing the Driver's Education Program

	FY 2001	FY 2002	FY 2003
Public	8,597	8,961	8,775
Nonpublic	1,606	1,632	1,647
Summer	262	374	409

### PUPIL TRANSPORTATION 95-04-00

#### FUNDING

	FY 2003 ACTUAL	FY 2004 BUDGET	FY 2005 GOV. REC.
GF	4,650.3	59,836.4	61,765.6
ASF	--	--	--
<b>TOTAL</b>	<b>4,650.3</b>	<b>59,836.4</b>	<b>61,765.6</b>

### *TRANSPORTATION* 95-04-01

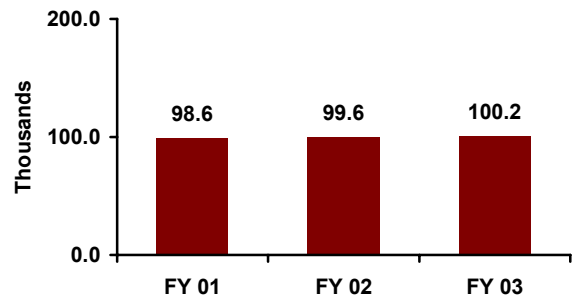
#### ACTIVITIES

This unit provides transportation to and from school for Delaware public school children and provides some allowance to parents of nonpublic pupils for transportation.

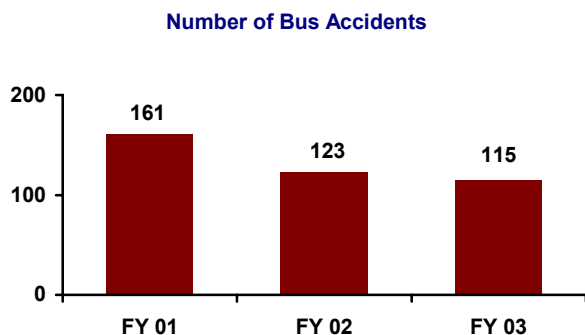
During the 2002-2003 school year, approximately 100,200 students (excluding nonpublic schools) were transported over 22 million miles on 1,600 school buses. School bus-related accidents (all school buses) decreased from 123 in 2001-2002 to 115 in 2002-2003. In addition, over 11,000 school bus contract addendums were processed.

### PERFORMANCE MEASURES

#### Public School Pupils Transported



## EDUCATION 95-00-00



## DELAWARE ADVISORY COUNCIL ON CAREER AND VOCATIONAL EDUCATION (DACCVE) 95-06-00

### MISSION

To strengthen and enhance the career and technical education delivery system and to assist the state in providing quality programs and expanded opportunities for all citizens.

### KEY OBJECTIVES

- Evaluate career and technical education programs and services.
- Provide technical assistance to local school districts, agencies and other organizations to enhance and improve the career and technical education delivery system.
- Advise policymakers on the development of and changes to state and federal laws, rules and regulations impacting vocational, career and technical education.
- Promote coordination, collaboration and effective partnerships among business, industry, labor, education and employment and training programs to help meet the economic needs of the state.
- Disseminate relevant career information to teachers, counselors, students and the general public.

### BACKGROUND AND ACCOMPLISHMENTS

The Delaware Advisory Council on Career and Vocational Education (DACCVE) was established by 14 Del. C. c. 86. DACCVE members are appointed by the Governor from both the private and public sectors. The membership includes representatives from business, industry, labor and trade organizations and educators representing secondary, postsecondary, career guidance and counseling, special populations and special education.

DACCVE makes policy recommendations to the Governor, General Assembly, Department of Education and State Board of Education on matters pertaining to career and technical education in Delaware.

DACCVE monitors and evaluates career and technical education programs and services in local school districts

# EDUCATION

## 95-00-00

and other organizations to ensure that these programs and services are in compliance with state and federal standards.

### Accomplishments

- Provided support services to comprehensive high schools to promote the implementation of integrated, sequential programs of study in career and technical education.
- Conducted in-service activities for middle and high school teachers, administrators and counselors relating to the development and implementation of Career Pathways in all schools.
- Assisted in the development of the State Plan for Career and Technical Education, the *CAREER COMPASS* publication and with the implementation of a statewide tracking system for Delaware high school graduates.
- Provided resources to improve Tech Prep programs, Vocational Student Organizations, and Business/Marketing, Agri-science, Family and Consumer Science and Technology Education programs.
- Conducted workshops for vocational teachers and school administrators regarding state and federal regulations and funding of career and technical programs.
- Developed a comprehensive and informative website on the State of Delaware portal.
- Partnered with several agencies to plan and conduct the statewide Delaware Connections Conferences for business, industry and educators.
- Revised and implemented the awards and recognition program to recognize individuals and organizations that make outstanding contributions to the field of career and technical education.

### FUNDING

	FY 2003 ACTUAL	FY 2004 BUDGET	FY 2005 GOV. REC.
GF	266.5	271.7	282.4
ASF	--	--	--
<b>TOTAL</b>	<b>266.5</b>	<b>271.7</b>	<b>282.4</b>

### POSITIONS

	FY 2003 ACTUAL	FY 2004 BUDGET	FY 2005 GOV. REC.
GF	3.0	3.0	3.0
ASF	--	--	--
NSF	--	--	--
<b>TOTAL</b>	<b>3.0</b>	<b>3.0</b>	<b>3.0</b>

### *ADVISORY COUNCIL* 95-06-01

### ACTIVITIES

- Coordinate council meetings to review and analyze pertinent issues and identify initiatives that the council will pursue to strengthen the career and technical education delivery system and to conduct other official business.
- Conduct on-site evaluations of career and technical education programs, and other Tech Prep initiatives in secondary and postsecondary schools to determine their compliance with state and federal standards.
- Recommend policy for, and evaluate the results of, the State Plan for Career and Technical Education.
- Conduct special studies and audits as requested by the Governor, General Assembly and State Board of Education.
- Provide technical assistance to local education agencies to replace the general education track in Delaware's traditional comprehensive high schools with sequential career and technical programs that will better prepare students for the workforce.
- Design and implement professional development for individuals from the public and private sectors involved in the delivery of career and technical education programs and services.
- Develop and disseminate career-related publications, guides, newsletters and reports.
- Collaborate with various agencies to pursue strategies that will lead to a statewide comprehensive workforce development system.

### PERFORMANCE MEASURES

	FY 2003 ACTUAL	FY 2004 BUDGET	FY 2005 GOV. REC.
# on-site career and technical education program reviews and monitoring visits	44	23	48
# participants in DACCVE sponsored workshops and conferences	899*	400	425
# career related publications and newsletters disseminated	49,840	47,500	50,500

\* One half of this total reflects a one-time statewide conference.

# EDUCATION

## 95-00-00

### DELAWARE CENTER FOR EDUCATIONAL TECHNOLOGY

#### 95-07-00

#### FUNDING

	FY 2003 ACTUAL	FY 2004 BUDGET	FY 2005 GOV. REC.
GF	947.1	1,805.1	1,827.7
ASF	--	--	--
<b>TOTAL</b>	<b>947.1</b>	<b>1,805.1</b>	<b>1,827.7</b>

#### POSITIONS

	FY 2003 ACTUAL	FY 2004 BUDGET	FY 2005 GOV. REC.
GF	7.0	7.0	7.0
ASF	--	--	--
NSF	--	--	--
<b>TOTAL</b>	<b>7.0</b>	<b>7.0</b>	<b>7.0</b>

#### MISSION

The Delaware Center for Educational Technology (DCET) is committed to help empower children, through the use of information and technology, to achieve higher standards in education.

DCET's goal is to create a technologically literate 21<sup>st</sup> century workforce that will help attract and retain high technology companies in Delaware.

#### KEY OBJECTIVES

- Coordinate the evaluation and implementation of educational technology applications.
- Assist with the integration of technology and curriculum in public education throughout the state.
- Conduct professional development activities to assist educators with utilizing technology in curriculum instruction.

#### BACKGROUND AND ACCOMPLISHMENTS

The focus of DCET is to create and maintain a modern educational technology infrastructure in Delaware's public schools, enabling students to meet the academic standards set by the State Board of Education.

DCET is governed by a 13-member Board of Directors consisting of three gubernatorial appointees, two public school superintendents, two public school principals, one district Information Technology representative, one curriculum coordinator, two public school teachers,

Secretary of Education and State Chief Information Officer. The State Librarian, Budget Director, Controller General, Secretary of Finance and one representative designated by each of the three Delaware public institutions of higher education, are ex-officio, non-voting members of the board.

Beginning in Fiscal Year 1996, \$30 million in Twenty-First Century Funds were appropriated to wire every public school with voice, data, coaxial, and fiber optics cable. By October 1998, DCET achieved this goal; providing at least one data port in each classroom fully connected to the Delaware Education Network and the Internet. Thus, Delaware was the first state in the nation to have network access to every public school classroom in the state.

The efforts of DCET have been recognized nationally, receiving a Computerworld Smithsonian Award for the Classroom Networking Project. The project is part of the 1998 Information Technology Innovation Collection. The case study and support material are part of the Smithsonian Institution's Permanent Research Collection on Information Technology at the National Museum of American History.

Upon completion of the wiring project, DCET initiated the Server and Infrastructure Enhancement Project. In Fiscal Year 2000, as the first phase of the project, DCET purchased the servers that form the core of the statewide pupil accounting system. The second phase of the project ensured a server in every school that serves the needs of the students. The architecture was developed for the Delaware Education Network to deploy administrative and instructional servers across the state, and every school has at least one server in the school.

### DELAWARE CENTER FOR EDUCATIONAL TECHNOLOGY (DCET)

#### 95-07-01

#### ACTIVITIES

DCET activities originally centered on the school wiring project. At the conclusion of the wiring project, the focus shifted to hardware and software procurement, maintenance and support, and professional development.

In Fiscal Year 2004, the responsibility of maintaining and supporting the telecommunications infrastructure was transferred to the Department of Technology and Information. DCET has refocused efforts to professional development, curriculum and instruction related activities. Key activities for Fiscal Year 2005 include:

**EDUCATION**  
**95-00-00**

- Initiate professional development activities in support of districts that utilize the “Level of Technology Implementation” (LoTi) Questionnaire that provides data to drive professional development needs of teachers.
- Conduct an annual technology survey in public schools.
- Provide for on-going professional development to allow educators to be comfortable with using technology as part of their curriculum.
- Technically assist the department with the implementation of the integrated Pupil Accounting and Curriculum Management System.
- Support technology planning initiatives in Delaware’s public schools.

**PERFORMANCE MEASURES**

	<b>FY 2003 ACTUAL</b>	<b>FY 2004 BUDGET</b>	<b>FY 2005 GOV. REC.</b>
# educators attending the annual Instructional Technology Conference	502	500	550
% schools completing annual technology survey	100	100	100
% school districts with at least one computer in all classrooms	90	95	95

**DELAWARE HIGHER EDUCATION  
COMMISSION**  
**95-08-00**

**FUNDING**

	<b>FY 2003 ACTUAL</b>	<b>FY 2004 BUDGET</b>	<b>FY 2005 GOV. REC.</b>
GF	4,339.3	3,769.5	3,890.2
ASF	--	--	--
<b>TOTAL</b>	<b>4,339.3</b>	<b>3,769.5</b>	<b>3,890.2</b>

**POSITIONS**

	<b>FY 2003 ACTUAL</b>	<b>FY 2004 BUDGET</b>	<b>FY 2005 GOV. REC.</b>
GF	7.0	7.0	7.0
ASF	--	--	--
NSF	--	--	--
<b>TOTAL</b>	<b>7.0</b>	<b>7.0</b>	<b>7.0</b>

**DELAWARE HIGHER EDUCATION COMMISSION**  
**95-08-01**

**MISSION**

The Higher Education Commission seeks to increase awareness of, and access to, higher education for Delaware students; to respond to public demand for guidance and problem resolution; to effectively administer a variety of state student aid and contract programs; and to meet higher education information needs for state policy and economic development.

**KEY OBJECTIVES**

- Improve higher education data collection and reporting for Delaware and provide access to comparative regional and national data.
- Administer state and federal student financial aid and contract programs consistent with higher education policy.
- Assist with the development and administration of private scholarship programs.
- Serve as a front-line resource for all aspects of college financing and admission.
- Increase awareness of the benefits of higher education and support early academic and financial preparation.



# EDUCATION

95-00-00

## BACKGROUND

The Postsecondary Education Commission was created in 1975 to coordinate state efforts in higher education. In 1979, the commission was assigned administration of a need-based grant program. Other student financial aid programs, including the Delaware Higher Education Loan program, were assigned in subsequent years. In 1991, the commission was renamed the Higher Education Commission.

The commission publishes the annual Higher Education Fact Book containing the information most frequently requested about colleges in Delaware.

The commission works with state agencies, high schools, community organizations and private industry to develop student guidance and financial aid programs. The commission also administers ten private scholarship programs, publishes the annual Scholarship Compendium (which lists approximately 150 public and private scholarships), and develops college planning checklists for high school students. Furthermore, the commission, Treasurer's Office and Pension Office provide administrative support to the College Investment Plan.

## ACTIVITIES

- Improve higher education data that is available to policymakers by supporting data collection and reporting of state, regional and national data.
- Serve as an independent front-line resource for all aspects of college financing and admissions. Serve an intermediary role in resolving problems with schools and lenders.
- Provide appropriate financial aid to students and administer 24 state financial aid programs.
- Administer the Delaware State Loan Repayment program to assist with repayment of outstanding loans through service commitment.
- Provide administrative link with Fidelity Investments in promotion of the College Investment Plan.