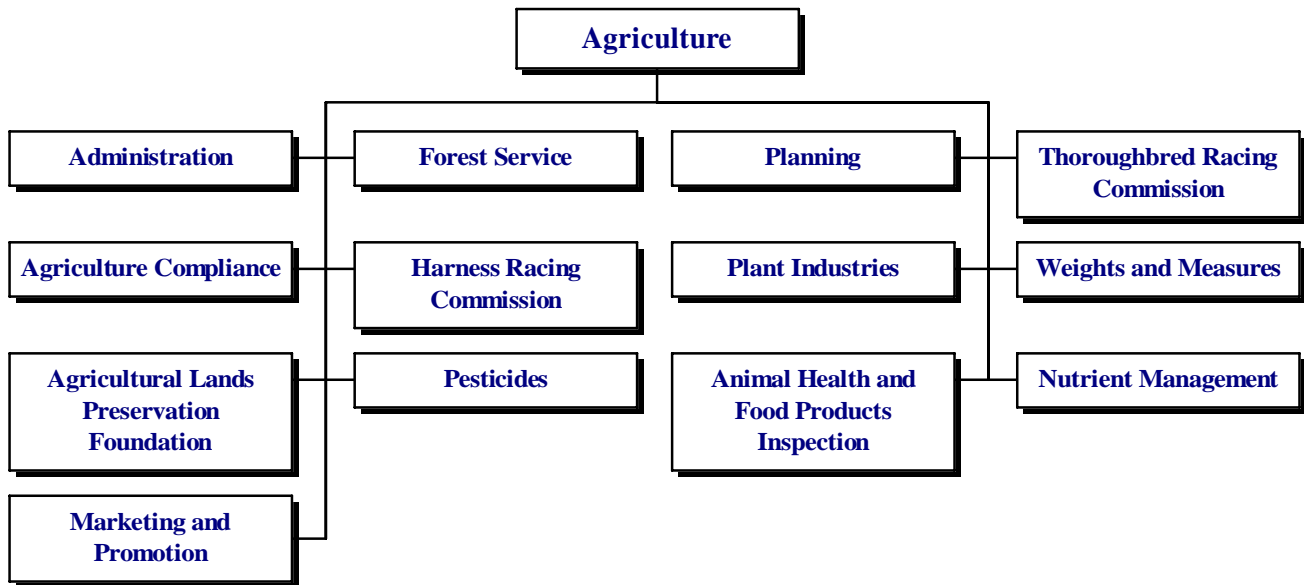


AGRICULTURE

65-00-00



MISSION

To sustain and promote the viability of food, fiber and agricultural industries in Delaware through quality services that protect and enhance the environment, health and welfare of the general public.

KEY OBJECTIVES

The Department works to ensure the most efficient use of limited resources to carry out mandated responsibilities that include, but are not limited to:

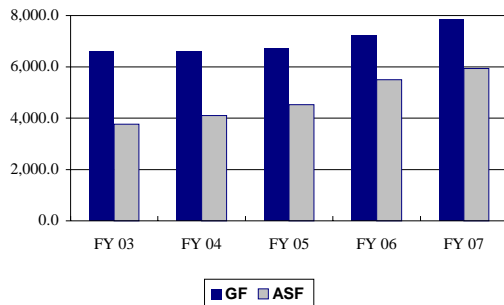
- Maintain same-day response to all human, animal and plant health emergencies;
- Reduce residues, pathogens and contaminants in the food supply and reduce the risk of food-borne illness due to intentional sabotage of the food supply in support of homeland security;
- Reduce non-compliance of commercial transactions involving regulated articles and activities;
- Increase participation in land management and conservation programs to support the Purchase of Development Rights (PDR) program;
- Identify and support new opportunities for expanding sales of Delaware's agricultural commodities and value-added products;

- Ensure the integrity of Delaware agricultural products through zero tolerance of quarantine pests and diseases for interstate and international certification;
- Increase the number and diversity of people participating in agricultural education, information and training programs;
- Develop and implement nutrient management practices that help protect ground and surface water, while maintaining a viable agricultural industry;
- Collect data and direct policies which will serve to protect the State's natural resources and environment from adverse effects;
- Regulate the movement of plant pests to prevent the introduction of dangerous organisms and facilitate research by state institutions and private interests;
- Maintain agricultural productivity and natural resources preservation by assisting land owners in controlling noxious weeds and non-native invasive plant species;
- Implement the Department marketing plan; and
- Continue efforts to streamline operations and reorganize functional components within the Department in an effort to better serve the agricultural community and general public.

AGRICULTURE

65-00-00

Five-Year Appropriation History



FUNDING

	FY 2006 ACTUAL	FY 2007 BUDGET	FY 2008 GOV. REC.
GF	7,823.6	7,858.5	8,753.1
ASF	4,108.1	5,936.1	6,091.3
TOTAL	11,931.7	13,794.6	14,844.4

POSITIONS

	FY 2006 ACTUAL	FY 2007 BUDGET	FY 2008 GOV. REC.
GF	88.8	92.3	91.3
ASF	39.5	41.0	42.0
NSF	16.7	15.2	15.2
TOTAL	145.0	148.5	148.5

FY 2008 BUDGET HIGHLIGHTS

OPERATING BUDGET:

- ◆ Recommend \$600.0 in Crop Insurance to provide cost share assistance to farmers.
- ◆ Recommend \$60.1 ASF in Personnel Costs and 1.0 ASF FTE for the Spay/Neuter Program.
- ◆ Recommend the reallocation of Food Products Inspection (65-01-03) into Animal Health and Food Products Inspection (65-01-09) to consolidate units to ensure organizational efficiency.

CAPITAL BUDGET:

- ◆ Recommend \$1,000.0 for the Forestland Preservation Program. This program will help preserve Delaware's remaining forested lands to protect air and water while improving our quality of life through the preservation of open space and wildlife diversity.

AGRICULTURE

65-01-00

BACKGROUND AND ACCOMPLISHMENTS

Administration

The Office of the Secretary serves as the contact point between the largest industry in the State - agriculture - and state government. The Secretary of Agriculture represents the agricultural community and related sectors of the economy in all facets of state government. Under the direction of the Office of the Secretary, the Department continues to conduct an aggressive program to inform the public of both the contributions made by the agricultural community and the services and protection provided by the Department to the consumers of the State. The Department has an educate before we regulate policy. The Department continues to develop better lines of communication with those that are regulated in order to obtain full compliance with the laws, rules and regulations enforced by the Department before resorting to administrative or criminal hearing procedures.

The Office of the Secretary also provides the Secretary of Agriculture with administrative support in addition to the personnel and fiscal services necessary to operate the Department. The Information, Education and Marketing section provides outreach functions to the agricultural community, including expansion of educational programs and other communications from the Department.

Agriculture Compliance

Agriculture Compliance regulates a variety of products under the authority of the Delaware Code, specifically the Delaware Commercial Feed Law, Delaware Commercial Fertilizer and Soil Conditioner Law, Delaware Agricultural Liming Materials Act, Frozen Sweetened Products Law, and Milk, Cream, and Other Milk Products Law. Most of these laws require the registration of the above products before being offered for sale. They also ensure that manufacturers label their products with accurate, non-misleading information so consumers are able to make well-informed decisions about the products they buy. The laws also authorize the inspection and testing of products to ensure that nutrient claims are accurate. Laboratory services are also provided to Delaware farmers for testing animal manures for nutrient content.

AGRICULTURE

65-00-00

Forest Service

Forests, both rural and urban, are a vital resource of the State, providing numerous benefits to all Delawareans. Delaware's rural forests comprise approximately 30 percent (375,000 acres) of the State, approximately 85 percent of which are privately owned. Delaware's forests face many challenges, including fragmentation by development, wildfire, insects and disease, poor management techniques, and non-native (invasive) species.

The mission of the Forest Service is to conserve, protect and enhance the forest and its resources through education, management, demonstration, promotion, and providing technical services in a timely and efficient manner. The Forest Conservation program helps landowners and communities improve their forest resources through education and technical assistance. The Forest Protection program strives to protect and improve forest health through wildfire prevention and suppression, watershed protection, and forest health monitoring activities. The Forestry Education program attempts to better educate and inform all citizens about the importance of the forests through the management of the three State forests, educational programs for children and adults, and two State Forest Education centers.

Harness Racing Commission

The Secretary of Agriculture shall promulgate rules and regulations relating to the establishment of the Delaware Harness Racing Commission (DHRC) as a unit. The DHRC is the regulatory body charged with the mission of regulating and providing diligent stewardship to and for the sport and business of Harness Racing within Delaware. A primary objective is the protection of public interest in pari-mutuel wagering contests and all aspects leading up to and following the conclusion of those races. The DHRC has jurisdiction over all associations conducting, and licensees participating in, harness racing. It is the intent of the DHRC to provide the opportunity for growth and regulatory oversight to the Delaware Standardbred Fund program. By providing efficient efforts to establish and maintain fairness and a level field of competition through objective standards, the DHRC strives to: make proper decisions affecting participants and the public alike, ensure due process in administrative matters, be responsive and attentive to public concern and provide information regarding the industry and Commission operations.

Pesticides

The Pesticides section is delegated authority under the Delaware Pesticide Law and federal Insecticide, Fungicide and Rodenticide Act to regulate the sale and use of pesticides in the State.

The Pesticides section emphasizes education and offers a comprehensive pesticide applicator certification and training program. The educational program is complemented by an ongoing compliance assistance and enforcement program of inspections and sampling at the various levels of pesticide distribution and use.

The section also administers a groundwater protection program to ensure that the use of pesticides is not degrading the State's ground/drinking water quality. The centerpiece of the program is a statewide shallow groundwater monitoring network comprised of over 60 domestic and agricultural wells and 108 dedicated monitoring wells owned by the State. In addition to testing the wells for pesticides and other contaminants, the section also monitors the depth of the water table to help predict water supply for domestic and agricultural use.

Planning

Planning is a technical enterprise within the Department that includes land use planning, operational planning, agricultural land preservation, and computer operations. Combining farmland preservation and planning coordination has helped to stem the loss of farmland in Delaware.

Plant Industries

Plant Industries is the plant and plant pest regulatory enforcement authority in the State. Its principal mission is to protect agriculture, the environment, and citizens from the damaging effects of plant and honeybee pests and noxious weeds while facilitating domestic and international trade of plants, plant products, grain, seed, and agricultural commodities.

Plant Industries has the authority to quarantine certain products, plants and/or pests as necessary to carry out the task of preventing the spread of economically or environmentally important pests. Plant Industries also works in cooperation with the USDA Plant Protection and Quarantine and University of Delaware Cooperative Extension Service to conduct surveys for non-native pests and pests of export significance.

Plant Industries is also responsible for the Gypsy Moth Suppression program, a cooperative program with the USDA Forest Service to help landowners deal with impacts caused by gypsy moths; and the Apiary Inspection program which requires anyone who plans to keep bees to annually register their colonies along with their location.

The Seed Laboratory certifies granaries, and trains and licenses grain inspectors; provides seed testing services to farmers; collects official seed samples from stores offering seed for sale throughout the State to test and ensure the labeling conforms to the Seed Law and that the seed meets

AGRICULTURE

65-00-00

minimum standards; and conducts the Seed Certification program.

Animal Health and Food Products Inspection

Animal Health and Food Products Inspection is charged with preventing the introduction and spread of contagious and infectious diseases into and within the animal and poultry population of the State. This is accomplished by maintaining a diagnostic laboratory, as well as cooperating with the poultry diagnostic laboratory of the University of Delaware. Section personnel respond to reports of actual or potential disease problems from veterinarians and livestock, poultry and pet owners. Personnel visit sites such as farms, dairies and livestock auctions to collect various biological specimens for analysis and diagnosis of disease. In most instances, the veterinarian or owner is informed of the diagnosis, control and/or treatment for the disease. However, when certain serious and highly contagious diseases are diagnosed, the State Veterinarian, through the authority given to the Secretary of Agriculture, may quarantine or even destroy the animal, herd or flock to prevent the spread of that disease to other premises.

Delaware is a member state in the Federal-State Cooperative Inspection program. The State Meat and Poultry Inspection program maintains standards that are at least equal to the federal inspection program.

Delaware also cooperates with the USDA in cooperative grading agreements with state departments of agriculture and other agencies. Under these federal-state agreements, federal-state licensed graders perform their work throughout the State at point of origin and retail outlets grading various commodities. The federal Food Safety and Quality Service establishes basic grading policies and procedures. The grade standards describe the quality requirements for each grade of a commodity, giving the industry a common language for selling and buying.

Thoroughbred Racing Commission

The Delaware Thoroughbred Racing Commission regulates and oversees the sport of Thoroughbred and Arabian racing in the State. Its primary objectives and principles are to protect, preserve and promote agriculture and horse racing. This is accomplished through effective and efficient efforts to prevent and eliminate corrupt practices; ensure fairness in decisions affecting licensees and patrons; ensure due process in administrative proceedings; be attentive to the public and licensees; and provide information concerning the industry and Commission operations. The Commission is also responsible for ensuring that the State and the betting public receive their fair percentages of the wagering dollar by overseeing periodic accounting audits.

Weights and Measures

This section is responsible for regulating all commercial transactions involving weighing and measuring; regulating all devices used commercially to determine weight, measure or count; and enforcing Delaware Packaging and Labeling Regulations. Major activities of this section include: inspection of retail packages, gas pumps, fuel oil and propane meters, scales, grain moisture meters, point of sale scanning systems, parking meters and other timing devices, and field testing standards. This section provides both in-house and off-site training to businesses and service technicians throughout the State. The Voluntary Serviceperson Registration program has enrolled almost 300 technicians, helping to ensure a higher degree of confidence in the accuracy and correctness of weighing and measuring devices used in Delaware.

Nutrient Management

Pursuant to provisions of the 1972 Clean Water Act, the Delaware Department of Natural Resources and Environmental Control and the U.S. Environmental Protection Agency signed a memorandum of understanding (MOU), which sets forth a plan to restore the quality of Delaware's impaired waters in order to achieve federal water quality standards. The MOU has made it necessary to develop and implement programs to reduce non-point source water pollution. Studies have indicated that excess nutrient loading of surface lands has a negative effect on the quality of both surface and groundwater. The Nutrient Management Law (3 Del. C. c. 22) authorized the Delaware Nutrient Management Commission and State Nutrient Management program. The Nutrient Management program is charged with regulating those activities involving the generation, handling and application of fertilizer nutrients to include animal manure. The program administers nutrient certifications, planning reimbursement, poultry litter relocation, farm audits, cordial resolution, concentrated animal feeding operation permitting, and environmental stewardship recognition.

Agricultural Lands Preservation Foundation

Since March of 1996, the Delaware Agricultural Lands Preservation Foundation has preserved 144,929 acres and 660 farms in Agricultural Preservation districts and district expansions in Delaware. Over 1,000 different families and organizations (titleholders) own these lands.

With expenditures to date of \$119.3 million, 462 properties with over 82,244 acres have been permanently protected through the Purchase of Development Rights (PDR). These acres of permanently preserved agricultural land account for 16 percent of the total land in farms and 7 percent of the State's total land area. This is the highest percentage of land area preserved through agricultural

AGRICULTURE

65-00-00

PDR in the nation. Preservation partnerships have been formed with all three counties and the federal government. Currently there are approximately 17,500 acres pending development rights purchase.

Marketing and Promotion

The Department of Agriculture is tasked with enhancing the economic viability of agriculture in the First State. The marketing and promotion efforts of the Department are an integral part of that mission. Responsibility for developing and implementing an overall effective and efficient marketing strategy for Delaware's agricultural products and services is charged to this group. This section is focused on serving the various commodity boards; furthering the diversification of agriculture; promoting Delaware's agricultural products and the Department; branding Delaware agricultural products; recruiting agricultural support business; and marketing agricultural products and services locally, regionally, nationally, and internationally.

ADMINISTRATION

65-01-01

ACTIVITIES

- Participate in and monitor strategies designed to protect agricultural lands in Delaware through the creation of agricultural districts and the purchase of development rights.
- Represent agriculture on councils and committees addressing natural resource projects.
- Oversee Department budget development, presentation and administration, as well as personnel management.
- Develop, present and provide information for various legislative initiatives that affect agriculture in Delaware.
- Provide direction and leadership to the Department and seek the input of the agricultural community in policy development.
- Serve Delaware farmers and agribusinesses with leadership and education in the areas of marketing and promotion in order to increase the sales and value of their products.

PERFORMANCE MEASURES

	FY 2006 Actual	FY 2007 Budget	FY 2008 Gov. Rec.
# of students impacted by Agriculture education and outreach	3,473	6,000	6,200

AGRICULTURE COMPLIANCE

65-01-02

ACTIVITIES

- Register agricultural products.
- Collect and submit samples from the Delaware market place to the laboratory for analysis.
- Issue violations and withdrawal from distribution orders for non-registered products, mislabeled products and nutrient deficiencies/excessives.
- License milk dealers who purchase milk from dairy farms across the State for employees who pick-up, measure and test milk from the dairy farms for payment purposes.
- Test fertilizer and livestock samples submitted by the general public.
- Test animal manures submitted by the general public for nutrient content.

PERFORMANCE MEASURES

	FY 2006 Actual	FY 2007 Budget	FY 2008 Gov. Rec.
# of inspection training programs completed (voluntary)	0	2	2
Information response time:			
# of days (average)	0.5	0	0
# of requests	12	10	5
# of days turnaround time from sample collection to final reports:			
Official samples	87	50	40
Submitted samples	16	7	7
Submitted manure samples	15	7	7

FOREST SERVICE

65-01-04

ACTIVITIES

- Help private forest landowners and communities to better manage forest resources by providing advice, recommendations and supervision, free of charge, to landowners for such activities as reforestation, timber stand improvement, forest management plans, and timber harvests.
- Oversee the Community Forestry Grant program, funded through the U.S. Forest Service, and provide tree planting and care recommendations to cities, towns, communities, homeowners, planners, engineers, and developers throughout Delaware.
- Provide educational (Smokey Bear) programs to first-grade students (over 8,400 students in Fiscal

AGRICULTURE

65-00-00

Year 2006) and work with the Delaware Fire School, fire companies and U.S. Forest Service to train firefighters in wildland fire suppression techniques.

- Monitor and diagnose forest pest populations through annual aerial surveys and plot measurements, as well as periodic ground inspections.
- Assist loggers and landowners through site visits and educational programs to help ensure forest management activities follow best management practices, and thus comply with Delaware's Forest Practices Erosion and Sedimentation Law and Seed Tree Law (3 Del. Laws, c. 10).
- Educate Delawareans about the importance of forests through activities on the State forests and visits to schools and other organizations.

PERFORMANCE MEASURES

	FY 2006 Actual	FY 2007 Budget	FY 2008 Gov. Rec.
% of timber harvests on non-industrial privately-owned lands which follow a forest management plan (FY 2006 harvest approx. 2,850 acres)	46	32	35
% of towns and cities recognized by the National Arbor Day Foundation as tree city USA communities (57 communities)	40	33	37
% of volunteer fire companies that participate in wildfire suppression education programs (60 companies)	40	50	60
% of public and private elementary schools that participate in Forest Service educational programs (229 schools)	50	55	55

HARNESS RACING COMMISSION ***65-01-05***

ACTIVITIES

- The Commission's Presiding Judge, Associate Judge and three alternate associate judges shall be accredited through a National Racing Accreditation organization.
- Provide oversight of the approximately 3,630 annual racing events that are for the purpose of pari-mutuel wagering during the course of harness racing seasons at Dover Downs and the Harrington Raceway.
- Ensure honesty and integrity in the running of races within the State by collecting post-race urine and

blood and pre-race blood samples from equine contestants out of each race plus special designated tests.

- License annually, fingerprint periodically and review background information to ensure that participants in the industry are not a risk to the integrity of the sport.

PERFORMANCE MEASURES

	FY 2006 Actual	FY 2007 Budget	FY 2008 Gov. Rec.
% accreditation of Commission's judges	100	100	100
% oversight of racing events	100	100	100
# of equine samples tested for prohibitive medications	>5,600	>5,600	>6,200
# of racing participants licensed	>2,775	>2,800	>2,800

PESTICIDES ***65-01-06***

ACTIVITIES

- Administer a licensing program for commercial pesticide applicators; provide certification and training for restricted use pesticide users; issue permits to dealers of restricted use pesticides sold in Delaware; register pesticide products sold or distributed in Delaware; and investigate complaints of pesticide use/misuse.
- Utilize large public events to educate consumers and homeowners on such topics as food safety, integrated pest management, ground and drinking-water protection, and safe urban pesticide use.
- Collect and recycle high-density polyethylene pesticide containers.
- Provide compliance assistance to the regulated community and, as necessary, prosecute violations of state and federal pesticide statutes.
- Monitor and assess the State's groundwater to ensure pesticide use does not degrade ground/drinking water quality. Cooperate with other state and local agencies on broad water quality and quantity issues.
- Collect samples of local fresh-market fruits and vegetables to determine if pesticide residues are present.
- Provide laboratory services for testing of animal, plant soil and other matrices where injury or contamination from pesticides is suspected.
- Protect consumers by inspecting termite pre-treatment applications and treatments subject to the

AGRICULTURE

65-00-00

requirements set forth in Section 22 of the Delaware Pesticide Rules and Regulations.

PERFORMANCE MEASURES

	FY 2006 Actual	FY 2007 Budget	FY 2008 Gov. Rec.
% of sample analysis related to priority incidents	36	50	50
# of pesticide containers recycled	25,000	30,000	30,000
% of actionable inspections	17	14	14
# of pesticide applicators certified	2,725	2,800	2,550

PLANNING 65-01-07

ACTIVITIES

- Review all land consumption development projects, including road improvements in Delaware, assess the impacts to agriculture, and advocate for mitigation of negative impacts.
- Provide strategic planning consultation to the Department.
- Provide reliable, current agricultural statistics and analysis to a variety of customers.

PERFORMANCE MEASURES

	FY 2006 Actual	FY 2007 Budget	FY 2008 Gov. Rec.
% of zoning and subdivision proposals affecting agriculture reviewed	100	100	100

PLANT INDUSTRIES 65-01-08

ACTIVITIES

- Assist and cooperate with USDA Plant Protection and Quarantine regarding export certification of plants and plant products; process permits for the interstate movement of plant pests; inspect fields and facilities for agricultural biotechnology permits; post-entry quarantine inspections; process permits for the interstate movement of soil; enforce federal and state quarantines; and administer and conduct the Cooperative Agricultural Pest Survey program.
- License and inspect all nursery businesses and conduct certification inspections for nursery stock shipped interstate or for export.

- Detect and control noxious weed infestations through implementation of compliance agreements.
- Provide specialized spray equipment to the public for the application of herbicides.
- Maintain grain inspection standards for all certified granaries and provide training to inspectors.
- Operate the Seed Certification program and test all types of seed offered for sale to determine compliance with the Seed Law.
- Register and inspect all honeybee colonies and promote the beekeeping industry.
- Maintain cooperative programs with Pennsylvania, Maryland and New Jersey to research and implement strategies to deal with the parasitic mite syndrome affecting honeybees.
- Administer the Gypsy Moth Survey and Suppression program while maintaining the infrastructure during low-level population cycles, making certain it is prepared for any new outbreaks.
- Provide ongoing public education activities for all Plant Industries programs.
- Develop and administer integrated pest control programs for invasive pest species.

PERFORMANCE MEASURES

	FY 2006 Actual	FY 2007 Budget	FY 2008 Gov. Rec.
# of certified acres inspected	10,000	10,000	10,000
% of businesses inspected for Seed Law compliance	85	85	85
% of retail nursery locations inspected	30	65	68
% of acres infested with noxious weeds treated or under a control program	75	79	82
# of registered bee colonies inspected	1,450	1,400	1,400
% of approved regulatory permits meeting requirements and reviewed within 10 days	100	100	100
# of key pests in statewide survey	4	5	5

ANIMAL HEALTH AND FOOD PRODUCTS **INSPECTION** 65-01-09

ACTIVITIES

- Prevent the spread of infectious and contagious diseases, including those transmitted from animals to people and ensure the safety of the general public by accepting suspect animals, recording all pertinent information and collecting proper specimens for the

AGRICULTURE

65-00-00

accurate diagnosis of diseases (rabies, West Nile Virus, encephalitis, psittacosis, etc).

- Protect the health status of the poultry industry by collecting avian influenza monitoring samples at live poultry auctions.
- Assist Delmarva broiler companies in placing healthier and less contaminated baby chicks in the field by collecting and completing hatchery sanitation samples.
- Provide competent diagnostic services for the detection of animal and poultry diseases by performing diagnostic procedures.
- Inspect meat and poultry and submit samples for laboratory analysis.
- Conduct systematic statewide monitoring of businesses in food marketing and distribution of both domestic and imported products for freshness, adulteration and labeling.
- Conduct statewide commodity grading at product point of origin.
- Provide food service safety training programs.

PERFORMANCE MEASURES

	FY 2006 Actual	FY 2007 Budget	FY 2008 Gov. Rec.
% of human exposure rabies specimens with same-day turnaround time	100	100	100
# of interactive encounters with state, federal or industry groups aimed at the prevention of controlled diseases	*	*	20,000
# of contacts through informative hatchery sanitation program	26,000	26,000	26,000
# of food services safety training programs	15	10	10
Meat and poultry products:			
lbs. inspected (millions)	6.5	6.5	6.5
lbs. condemned (thousands)	2.0	2.0	2.5
Compliance enforcement - trucking companies, retail stores, state agencies:			
# of reviews (thousands)	950.0	970.0	990.0
lbs. of product condemned (millions)	1.0	1.5	1.5
lbs. of processed poultry, shell eggs, fruits and vegetables (thousands)	370.0	1,000.0	1,000.0
Retail shell graded egg inspection:			
# of reviews	408	381	450
# of violations	6	6	6

*New performance measure.

THOROUGHBRED RACING COMMISSION

65-01-10

ACTIVITIES

- Receive accreditation for the racing stewards through a national racing accreditation organization.
- Oversight of approximately 1,350 annual racing events during the course of a Thoroughbred and Arabian racing season in the State of Delaware.
- Ensure the honesty and integrity in the running of races within the State by collecting post-race urine and blood samples from equine contestants out of each race plus special designated samples.
- License annually, fingerprint periodically and review background information to ensure that participants in the industry are not a risk to the integrity of the sport.

PERFORMANCE MEASURES

	FY 2006 Actual	FY 2007 Budget	FY 2008 Gov. Rec.
% accreditation of Commission's stewards	100	100	100
% oversight of racing events	100	100	100
# of equine samples tested for prohibitive medications	>1,990	>1,990	>1,990
# of applicants licensed	>5,000	>5,000	>5,000

WEIGHTS AND MEASURES

65-01-11

ACTIVITIES

- Conduct inspection activities such as gasoline, diesel and kerosene pumps; small and medium commercial scales commonly found in supermarkets or medium scales used for livestock and feed; large capacity commercial scales; and commercial home delivery fuel oil and propane trucks to ensure compliance with national standards.
- Inspect consumer packages for compliance with net weight, measure, count, labeling regulations, and computerized scanning devices for accuracy.
- Inspect grain moisture meters used in determining the value of grain sold and purchased in the State.
- Inspect a statistical sampling of various timing devices to serve consumers in the State including parking meters, laundromats, car washes, and air pumps.
- Respond to consumers who register a complaint concerning a possible violation of the Weights and

AGRICULTURE

65-00-00

Measures Law, a questionable marketing practice or an incorrect device, within 24 hours.

- Administer the Delaware Voluntary Serviceman Registration program for approved servicemen that demonstrate proficiency in their field and fulfill program requirements.
- Provide resources and materials to consumers and businesses to increase awareness of Weights and Measures issues.

PERFORMANCE MEASURES

	FY 2006 Actual	FY 2007 Budget	FY 2008 Gov. Rec.
# of consumer complaints	65	80	80
# of small/large scales tested	2,865	3,140	3,335
# rejected	68	73	78
# of truck scales tested	248	252	255
# rejected	25	27	28
# of petroleum meters tested	9,029	9,300	9,600
# rejected	642	750	900
# of vehicle tank meters tested	359	370	380
# rejected	20	22	23
# of moisture meters tested	79	80	80
# rejected	6	6	6
# of DSP enforcement scales tested	9	16	16
# rejected	1	2	2
# of timing devices tested	*	8,000	8,000
# rejected	*	80	80
# of package lots tested	3,704	6,000	9,000
# of rejected lots	255	500	800
# of price verifications performed	152	300	500
# of failed inspections	31	35	50
# of technicians registered	265	265	275

*New performance measure.

NUTRIENT MANAGEMENT 65-01-12

ACTIVITIES

- Promote alternative use practices for excess nutrients generated in Delaware by developing and implementing incentive and market-based programs.
- Institute a program to assist in developing and funding nutrient management plans according to law and program standards.
- Implement nutrient management certification requirements by providing nutrient handlers with initial and continuing educational opportunities.
- Implement the State's National Pollutant Discharge Elimination System (NPDES) Permitting program for concentrated animal feeding operations (CAFO) in cooperation with the Department of Natural

Resources and Environmental Control and according to the Clean Water Act and federal regulations.

- Develop and implement demonstration projects within the farm community for best management practices.
- Audit nutrient management activities to instill legal compliance and high quality services.
- Respond to informal and formal complaints against nutrient management practices.
- Recognize environmental stewards within the agricultural community with the cooperation and financial support of the agri-businesses and poultry companies operating within the State.
- Facilitate and actively fund research projects according to priorities that will better balance science-based policy development with modern and responsible nutrient management practices.

PERFORMANCE MEASURES

	FY 2006 Actual	FY 2007 Budget	FY 2008 Gov. Rec.
Tons of poultry litter-manure relocated within the Delmarva peninsula for land application	16,029	20,000	20,000
Tons of poultry litter-manure exported from the Delmarva peninsula for land application	13,280	15,000	15,000
Tons of poultry litter-manure relocated to an alternative use project	55,512	60,000	65,000
% of cropland and nutrient applied land managed under a current plan developed by a certified consultant	85	100	100
Acres managed under a nutrient management plan	404,959	457,000	457,000
# of nutrient consultants	101	100	100
# of commercial handlers	52	50	50
# of private applicators	1,370	1,500	1,500
# of nutrient generators	509	550	550
# of nutrient management farm audits	18	20	25
# of complaints:			
Received	71	50	50
Resolved	71	50	50
# of CAFO permits	5	7	7

AGRICULTURE
65-00-00

***AGRICULTURAL LANDS PRESERVATION
FOUNDATION
65-01-13***

ACTIVITIES

- Operate the Farmland Preservation program of agriculture districts and the purchase of development rights.

PERFORMANCE MEASURES

	FY 2006 Actual	FY 2007 Budget	FY 2008 Gov. Rec.
Acres of prime farmland permanently preserved	3,216	2,400	1,800

***MARKETING AND PROMOTION
65-01-14***

ACTIVITIES

- Draft an overall Agricultural Marketing Plan, which channels Delaware agricultural products to local, regional, national and international markets.
- Call and visit wholesale purchasers and regional outlets to increase market penetration for Delaware products.
- Increase name recognition of Delaware agricultural products regionally and nationally through a newly created branding strategy.
- Direct and coordinate the activities of the two Department buildings located at the Delaware State Fair grounds.
- Partner with DEDO, USDA, other state departments of agriculture, and private industry to identify barriers in the promotion and marketing of agricultural products and offer solutions to remove those barriers.

PERFORMANCE MEASURES

	FY 2006 Actual	FY 2007 Budget	FY 2008 Gov. Rec.
# of new international market outlets	2	3	4
# of agricultural industry processing companies recruited	0	2	3
# of value-added ventures per year	3	4	5