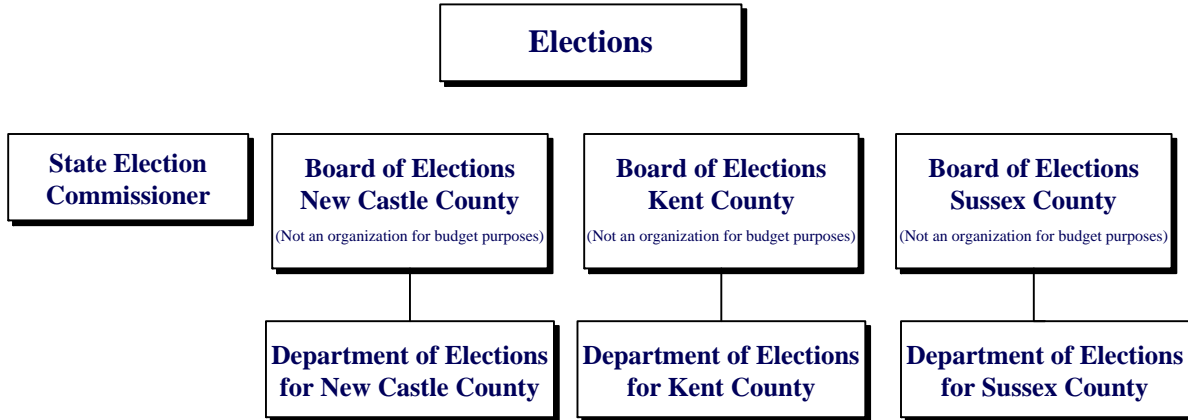


ELECTIONS

70-00-00



MISSION

The mission of the Department of Elections is to provide a standardized, secure and accurate election system for the residents of Delaware. The department provides residents with the information access and structure needed to participate, as well as access to fair and accurate campaign finance reports.

KEY OBJECTIVES

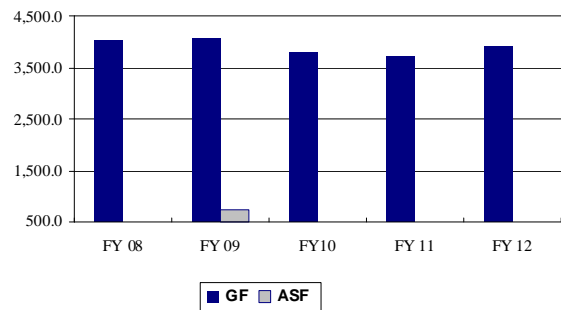
- Ensure the standard administration of Delaware election laws.
- Use technology to improve services to Delaware residents here and abroad.
- Conduct elections for Delaware residents from presidential primaries to school and municipal elections.
- Accurately track and post campaign finance reports.

BACKGROUND AND ACCOMPLISHMENTS

The department has led the nation in developing the first statewide electronic voting system. Elections have been successfully conducted on all regional levels. In addition, voting machines have audio modules, which make them accessible to persons with visual disabilities.

Delaware successfully maintained a statewide voter registration database long before it became a federal mandate.

Five-Year Appropriation History



FUNDING

| | FY 2011 ACTUAL | FY 2012 BUDGET | FY 2013 GOV. REC. |
|--------------|-------------------|-------------------|----------------------|
| GF | 6,123.5 | 3,928.1 | 4,025.7 |
| ASF | -- | -- | -- |
| TOTAL | 6,123.5 | 3,928.1 | 4,025.7 |

POSITIONS

| | FY 2011 ACTUAL | FY 2012 BUDGET | FY 2013 GOV. REC. |
|--------------|-------------------|-------------------|----------------------|
| GF | 43.0 | 42.0 | 42.0 |
| ASF | -- | -- | -- |
| NSF | -- | -- | -- |
| TOTAL | 43.0 | 42.0 | 42.0 |

FY 2013 BUDGET HIGHLIGHTS

OPERATING BUDGET:

- ◆ Recommend \$52.4 in Contractual Services due to increased lease costs.

ELECTIONS

70-00-00

STATE ELECTION COMMISSIONER **70-01-01**

MISSION

To coordinate statewide activities and standardize election policies and practices. The office also oversees campaign finance reporting and federal programs, including the Help America Vote Act (HAVA).

KEY OBJECTIVES

- Maintain a statewide voter registration system.
- Coordinate with each county to conduct all mandated elections.
- Educate and assist municipalities in the conduct of their elections.
- Accurately track and post campaign finance reports.

BACKGROUND AND ACCOMPLISHMENTS

The office provides services to all residents as required by state and federal laws to ensure uniform access to the electoral process.

Delaware has received national recognition for the Electronic Signature project, which uses technology to create a seamless, paperless connection between the Division of Motor Vehicles (DMV) and the Department of Elections. This same technology is now being utilized by the Department of Health and Social Services (DHSS) and will soon be available to the Department of Labor (DOL), making real-time, electronic submissions the norm for all agencies mandated to process voter registration.

In response to the federal mandate to provide electronic transmission of absentee ballots to military and overseas voters, staff developed its own vendor-free system that will save significant annual maintenance fees.

Campaign finance reporting is available through our online program, Campaign Finance Information System, providing 24/7 availability. Improvements are underway to make this a searchable system.

The office participates in Student/Parent Mock Elections, in cooperation with the Departments of Technology and Information, State and Education and the League of Women Voters.

As the Chief State Election Official, the Commissioner administers HAVA funding, which mandates federal standards for voting machines, voter registration and access for Delaware voters. These funds have been used

to upgrade our voting machines, make our polling places accessible and increase technology to improve our processes.

FUNDING

| | FY 2011 ACTUAL | FY 2012 BUDGET | FY 2013 GOV. REC. |
|--------------|-------------------|-------------------|----------------------|
| GF | 1,220.6 | 1,018.7 | 1,083.1 |
| ASF | -- | -- | -- |
| TOTAL | 1,220.6 | 1,018.7 | 1,083.1 |

POSITIONS

| | FY 2011 ACTUAL | FY 2012 BUDGET | FY 2013 GOV. REC. |
|--------------|-------------------|-------------------|----------------------|
| GF | 13.0 | 12.0 | 12.0 |
| ASF | -- | -- | -- |
| NSF | -- | -- | -- |
| TOTAL | 13.0 | 12.0 | 12.0 |

ACTIVITIES

- Administer the Organized Voter Registrar program, which involves training voter registrars throughout the State.
- Administer HAVA, which sets guidelines for election improvements.
- Collaborate with the Department of Elections in each county to ensure uniformity.
- Maintain the statewide voter registration file.
- Collect and report unofficial results of presidential primaries, state primaries, general and special elections in a timely manner.
- Provide support and assistance to candidates and committees regarding campaign finance laws.
- Work with other state agencies to ensure accuracy regarding the restoration of felon voting rights.
- Implement programs and systems that enable access to information during non-business hours.
- Support municipalities regarding election and campaign finance laws.

PERFORMANCE MEASURES

| | FY 2011 Actual | FY 2012 Budget | FY 2013 Gov. Rec. |
|---|-------------------|-------------------|----------------------|
| # of candidate committees | 2,557 | 2,900 | 3,000 |
| # of requests for campaign finance assistance | 4,000 | 3,500 | 4,000 |
| # of referenda elections | 10 | 10 | 10 |
| # of school board elections | 16 | 16 | 16 |

ELECTIONS

70-00-00

DEPARTMENT OF ELECTIONS FOR NEW CASTLE COUNTY

70-02-01

MISSION

The Department of Elections for New Castle County provides first-class service to residents by registering them to vote and conducting fair and impartial elections.

KEY OBJECTIVES

- Provide quality service to all customers.
- Register Delaware residents who apply and are eligible to register to vote.
- Remove ineligible voters from the list of registered voters.
- Conduct elections in an efficient and impartial manner, as mandated by 14 and 15 Del. C.
- Educate the public regarding the elections process and the use of the State's electronic voting machine.
- Enhance efficiency by streamlining operational procedures.

BACKGROUND AND ACCOMPLISHMENTS

The department broadened the recruitment of election officers, enhanced election officer training, partnered with the State Election Commissioner to improve the election process and used technology and staff-initiated innovations to improve efficiency and reduce costs in a challenging fiscal climate.

FUNDING

| | FY 2011 ACTUAL | FY 2012 BUDGET | FY 2013 GOV. REC. |
|--------------|-------------------|-------------------|----------------------|
| GF | 2,595.4 | 1,476.6 | 1,491.5 |
| ASF | -- | -- | -- |
| TOTAL | 2,595.4 | 1,476.6 | 1,491.5 |

POSITIONS

| | FY 2011 ACTUAL | FY 2012 BUDGET | FY 2013 GOV. REC. |
|--------------|-------------------|-------------------|----------------------|
| GF | 15.0 | 15.0 | 15.0 |
| ASF | -- | -- | -- |
| NSF | -- | -- | -- |
| TOTAL | 15.0 | 15.0 | 15.0 |

ACTIVITIES

- Register voters.
- Maintain an accurate voter registration database.

- Plan upcoming elections.
- Conduct elections in accordance with state and federal laws.
- Educate department staff and election officers.
- Produce printed materials and resources.
- Engage in public outreach and education initiatives.
- Maintain the election system infrastructure.
- Conduct elections for unions, student governments and other entities.

PERFORMANCE MEASURES

Voter Registration Transactions

| | FY 2011 Actual | FY 2012 Budget | FY 2013 Gov. Rec. |
|-----------------|-------------------|-------------------|----------------------|
| New voters | 16,339 | 20,000 | 24,000 |
| Address changes | 20,393 | 20,000 | 27,000 |
| Name changes | 5,968 | 4,000 | 6,000 |
| Party changes | 6,257 | 6,000 | 10,000 |

Cancelled Voter Registrations

| | FY 2011 Actual | FY 2012 Budget | FY 2013 Gov. Rec. |
|-----------------------|-------------------|-------------------|----------------------|
| Deceased | 4,436 | 3,000 | 3,500 |
| Verification programs | 26,722 | 15,000 | 25,000 |
| Moved out of state | 2,600 | 3,000 | 3,000 |
| Board actions | 7 | 20 | 20 |
| Not a resident | 3 | 20 | 20 |

Absentee Ballots

| | FY 2009 Actual* | FY 2011 Actual | FY 2013 Gov. Rec.* |
|----------------------|--------------------|-------------------|-----------------------|
| Total ballots issued | 11,757 | 6,357 | 14,000 |

*Presidential election year.

DEPARTMENT OF ELECTIONS FOR KENT COUNTY

70-03-01

MISSION

The Department of Elections for Kent County serves the residents of Kent County and the State of Delaware with the operation of voter registration programs and conducts all elections in accordance with state and federal laws.

KEY OBJECTIVES

- Perform all duties related to conducting an election pursuant to state and federal laws.
- Provide information to the public, candidates and political parties regarding election laws, rules, regulations and registration requirements.

ELECTIONS

70-00-00

- Conduct all elections mandated by 14 and 15 Del. C. in an efficient, fair and impartial manner.
- Notify, appoint and train election officers for all elections mandated by 14 and 15 Del. C. to perform uniform and non-partisan elections.

BACKGROUND AND ACCOMPLISHMENTS

During the past year, the department met filing and voter registration deadlines in a timely and professional manner and accomplished the redistricting by meeting timelines in a professional manner. The department assisted with municipal elections pursuant to 15 Del. C. and six municipalities in Kent County are now using the Voter Registration system pursuant to 15 Del. C. § 7554(b). The department also performed many activities for voter education with the school districts and group functions, such as supplying voting machines, ballots, voter registrars, polling place information, absentee ballot information and promotional items to keep the public aware of the continuing changes in voting practices.

FUNDING

| | FY 2011 ACTUAL | FY 2012 BUDGET | FY 2013 GOV. REC. |
|--------------|-------------------|-------------------|----------------------|
| GF | 1,314.9 | 772.9 | 782.6 |
| ASF | -- | -- | -- |
| TOTAL | 1,314.9 | 772.9 | 782.6 |

POSITIONS

| | FY 2011 ACTUAL | FY 2012 BUDGET | FY 2013 GOV. REC. |
|--------------|-------------------|-------------------|----------------------|
| GF | 8.0 | 8.0 | 8.0 |
| ASF | -- | -- | -- |
| NSF | -- | -- | -- |
| TOTAL | 8.0 | 8.0 | 8.0 |

ACTIVITIES

- Maintain voter registration files, analyze voter registration documents and keep statistical information.
- Maintain a felon database for the prothonotary reports and Criminal Justice Information System.

PERFORMANCE MEASURES Voter Registration Transactions

| | FY 2011 Actual | FY 2012 Budget | FY 2013 Gov. Rec. |
|----------------|-------------------|-------------------|----------------------|
| New voters | 5,400 | 5,670 | 5,698 |
| Address change | 6,058 | 6,088 | 6,118 |
| Name change | 87 | 91 | 95 |
| Party change | 2,133 | 2,143 | 2,154 |

Cancelled Voter Registrations

| | FY 2011 Actual | FY 2012 Budget | FY 2013 Gov. Rec. |
|-----------------------|-------------------|-------------------|----------------------|
| Deceased | 932 | 936 | 941 |
| Verification programs | 6,264 | 6,295 | 6,324 |
| Moved out of state | 241 | 242 | 243 |

Absentee Ballots

| | FY 2009 Actual* | FY 2011 Actual | FY 2013 Gov. Rec.* |
|---------------------|--------------------|-------------------|-----------------------|
| Total voted ballots | 4,389 | 2,657 | 9,400 |

*Presidential election year.

DEPARTMENT OF ELECTIONS FOR SUSSEX COUNTY 70-04-01

MISSION

The Department of Elections for Sussex County serves the residents of Sussex County by registering voters, conducting primary, general, special and public school elections in accordance with state and federal laws.

KEY OBJECTIVES

- Provide prompt and courteous service to all customers.
- Conduct all elections mandated by 14 and 15 Del. C. in an efficient, fair and impartial manner.
- Register all eligible permanent residents of the State of Delaware who submit a complete and accurate voter registration application to vote.
- Provide mobile registration by scheduled events or at the request of organizations.
- Provide information to the public, candidates and political parties regarding election laws, rules, regulations and registration requirements.
- Comply with the Sussex County 911 road naming project.
- Educate the public about the use of electronic voting machines and the election process.

ELECTIONS

70-00-00

- Remove ineligible voters from the voting rolls in accordance with state and federal laws.
- Enhance the department's productivity through the application of technology and redesign of tasks.

BACKGROUND AND ACCOMPLISHMENTS

The department continues to manage increasing numbers of new registration, change of address and name applications due to the Motor Voter Act. The act mandates DMV, DHSS and DOL to register eligible residents.

During Fiscal Year 2012, the department will provide for the set up and delivery of voting machines for at least six student government elections, six school district elections and referenda, 26 municipal elections and referenda in Sussex County and the annual Delaware Electric Cooperative Board of Directors election.

FUNDING

| | FY 2011 ACTUAL | FY 2012 BUDGET | FY 2013 GOV. REC. |
|--------------|-------------------|-------------------|----------------------|
| GF | 992.6 | 659.9 | 668.5 |
| ASF | -- | -- | -- |
| TOTAL | 992.6 | 659.9 | 668.5 |

POSITIONS

| | FY 2011 ACTUAL | FY 2012 BUDGET | FY 2013 GOV. REC. |
|--------------|-------------------|-------------------|----------------------|
| GF | 7.0 | 7.0 | 7.0 |
| ASF | -- | -- | -- |
| NSF | -- | -- | -- |
| TOTAL | 7.0 | 7.0 | 7.0 |

ACTIVITIES

- Register new voters by mail and mobile registration.
- Process applications received as a result of agency-based registration.
- Maintain voter registration files.
- Conduct school elections and referenda.
- Provide voting machines, training and support for municipal elections and referenda.
- Conduct the primary and general elections in Sussex County.
- Provide voter education.

PERFORMANCE MEASURES Voter Registration Transactions

| | FY 2011 Actual | FY 2012 Budget | FY 2013 Gov. Rec. |
|----------------|-------------------|-------------------|----------------------|
| New voters | 7,632 | 8,680 | 10,200 |
| Address change | 7,600 | 9,680 | 10,500 |
| Name change | 815 | 915 | 1,015 |
| Party change | 1,489 | 1,800 | 2,500 |

Cancelled Voter Registrations

| | FY 2011 Actual | FY 2012 Budget | FY 2013 Gov. Rec. |
|--------------------|-------------------|-------------------|----------------------|
| Deceased | 1,529 | 1,629 | 1,729 |
| Moved out of state | 3,015 | 1,200 | 1,800 |
| Board action | 10 | 12 | 15 |

Absentee Ballots

| | FY 2009 Actual* | FY 2011 Actual | FY 2013 Gov. Rec.* |
|---------------------|--------------------|-------------------|-----------------------|
| Total voted ballots | 7,544 | 4,639 | 2,815 |

*Presidential election year.