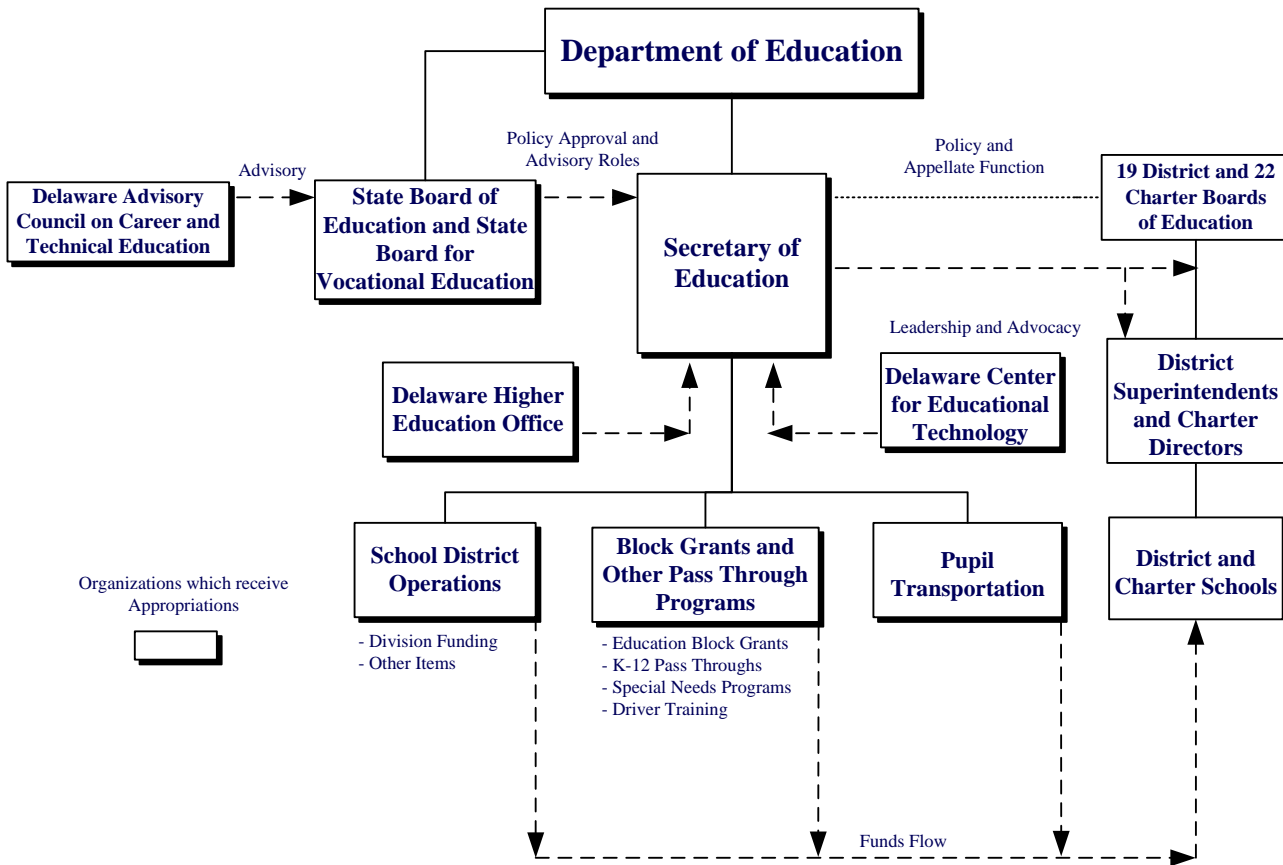


# EDUCATION

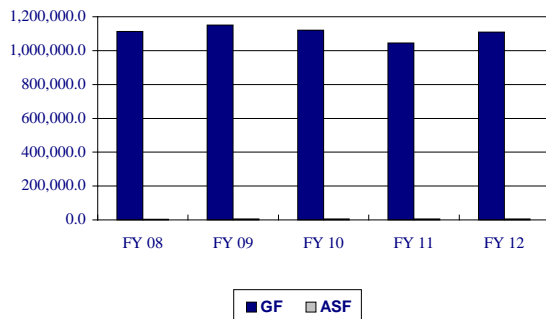
## 95-00-00



### MISSION

To promote the highest quality education for every Delaware student by providing visionary leadership and superior service.

#### Five-Year Appropriation History



### FUNDING

	FY 2011 ACTUAL	FY 2012 BUDGET	FY 2013 GOV. REC.
GF	68,924.4	1,109,671.9	1,172,547.7
ASF	3,322.1	4,733.1	5,106.6
<b>TOTAL</b>	<b>72,246.5</b>	<b>1,114,405.0</b>	<b>1,177,654.3</b>

### POSITIONS

	FY 2011 ACTUAL	FY 2012 BUDGET	FY 2013 GOV. REC.
GF	13,526.5	13,627.4	13,803.8
ASF	9.0	9.0	9.0
NSF	54.3	54.3	54.9
<b>TOTAL</b>	<b>13,590.1</b>	<b>13,690.7</b>	<b>13,867.7</b>

### FY 2013 BUDGET HIGHLIGHTS

#### OPERATING BUDGET:

- ◆ Recommend \$27,425.1 in Educational Sustainment Fund to maintain funding level from loss of federal Education Jobs funding.
- ◆ Recommend \$1,500.0 in School Improvement Funds to support grants to low-achieving non-Title I schools in accordance with the waiver for No Child Left Behind.
- ◆ Recommend \$1,057.1 in Educator Accountability to develop student growth measures for teacher evaluations in non-tested subjects.

# EDUCATION

## 95-00-00

### CAPITAL BUDGET:

- ◆ Recommend \$116,103.2 for Public Education projects, including funding for Minor Capital Improvements and Architectural Barrier Removal and for projects in the Capital, Laurel, New Castle County Vocational Technical, Polytech, Red Clay, Seaford, Sussex Technical and Woodbridge School Districts.

### DEPARTMENT OF EDUCATION

#### 95-01-00

#### KEY OBJECTIVES

The Department of Education (DOE) will align its efforts to:

- Set high expectations for all students with rigorous standards and curricula;
- Align curricula with cutting-edge assessments to measure student achievement;
- Use longitudinal student achievement data to gauge student growth;
- Make student growth the critical factor in educator evaluations;
- Conduct annual evaluations to understand teacher and principal effectiveness;
- Increase educator effectiveness with comprehensive professional development;
- Use data to inform professional development and advancement, as well as educator preparation and distribution to low-achieving schools; and
- Increase the success of the lowest-achieving schools with support and accountability.

DOE will focus its effort in four areas.

#### Standards and Assessments

Implement rigorous college- and career-ready standards and link with high-quality formative and summative assessments.

- Implement and provide training in the new rigorous Common Core Standards and align grade-level expectations to guide curriculum.
- Maintain and refine the student assessment system, using computer-adaptive assessments to measure student progress up to four times each year.
- Increase college- and career-readiness by funding a statewide assessment of college-readiness, implementing a middle school college-readiness program and hosting Advanced Placement (AP) summer institutes to train teachers for AP classes.
- Provide greater support and accountability to schools in the State Partnership Zone and ensure the State and the districts collaboratively intervene in failing schools.

# EDUCATION

## 95-00-00

### Data Systems to Support Instruction

Improve access and use of the State's robust longitudinal data system.

- Provide data coaches to increase data-driven instruction by building educators' technical and pedagogical skills during weekly collaborative planning time.
- Build an Educational Dashboard Portal to make trend data easily accessible to different stakeholders with differentiated dashboards based on stakeholder role.
- Increase P-20 and inter-agency data coordination with Memoranda of Understanding and expansion of the statewide longitudinal data system.

### Great Teachers and Leaders

Improve teacher and principal effectiveness.

- Follow new regulations that revise the statewide annual educator evaluation system to include four ratings: highly effective, effective, needs improvement and ineffective.
- Make student growth the determining factor for receiving effective ratings and define rigorous and comparable measures of student growth in consultation with stakeholder groups.
- Provide development coaches to support principals (and other assessors) in conducting evaluations, feedback sessions and creating development plans.
- Provide high-quality training to assessors.
- Define a model career ladder and Teacher Leader roles and responsibilities to better link educator effectiveness to advancement.
- Extend the provision of performance-based bonuses to schools.

Ensure equitable distribution of effective teachers and principals.

- Establish and expand partnerships with alternate certification programs and support a Science, Technology, Engineering and Mathematics teacher residency to increase the pipeline of high-quality educators.
- Conduct teaching and learning conditions surveys to improve school environments.
- Develop a statewide marketing campaign and a central hiring website to attract the best teachers and principals.
- Engage families and communities by raising awareness through a comprehensive marketing campaign.

Improve the effectiveness of teacher and principal preparation programs.

- Assess the effectiveness of preparation routes by linking educator effectiveness data to preparation and certification programs.
- Expand successful programs and improve or remove less successful programs.

Provide effective support to teachers and leaders.

- Accelerate the development of instructional leaders with intensive training for novice and high-need principals and distributed leadership training for all other principals.
- Develop a coherent professional development model that links offerings to specific skill and role expectations and the statewide evaluation rubric.
- Establish standards for professional development and create a process for certifying and monitoring the success of all professional development.
- Create an analytical tool to assess key human capital data points such as vacancy rates, time-to-hire and attrition.

### Turning Around the Lowest Achieving Schools

- Provide greater support and accountability to schools in the State Partnership Zone and ensure the State and the districts collaboratively assist only schools identified as one of the lowest achieving schools.
- Manage a State Turnaround Office with the primary focus to provide financial and expert resources to the most at-risk schools and/or Partnership Zone schools.

### FUNDING

	FY 2011 ACTUAL	FY 2012 BUDGET	FY 2013 GOV. REC.
GF	34,455.9	31,741.1	33,178.0
ASF	2,053.1	2,608.5	2,532.0
<b>TOTAL</b>	<b>36,509.0</b>	<b>34,349.6</b>	<b>35,710.0</b>

### POSITIONS

	FY 2011 ACTUAL	FY 2012 BUDGET	FY 2013 GOV. REC.
GF	131.7	131.7	132.1
ASF	5.0	5.0	5.0
NSF	53.3	53.3	53.9
<b>TOTAL</b>	<b>190.0</b>	<b>190.0</b>	<b>191.0</b>

# EDUCATION

## 95-00-00

### *DEPARTMENT OF EDUCATION* *95-01-01*

#### ACTIVITIES

##### **Office of the Secretary of Education**

Provide leadership and technical resources to fulfill the State's education goals in collaboration with the local boards of education, district superintendents, charter directors, all school-based employees, parents and community members.

##### **Financial Reform and Resource Management**

- Allocate and oversee the administration of state, federal and special funds.
- Oversee school plant planning, including major and minor capital improvement programs.
- Oversee transportation for public schools.
- Provide support for operations, including financial management, emergency preparedness, human resources, district and charter school board training and the Children Services Cost Recovery Program.
- Manage data collection and reporting to meet federal and state requirements.
- Manage the statewide pupil accounting system.
- Manage DOE's website and technology infrastructure.

##### **Teaching and Learning**

- Provide a system of high-quality professional development and technical assistance targeted at areas of greatest student need.
- Support literacy programs from pre-school through high school.
- Operate the Delaware Science Coalition, including its warehouse.
- Provide support services for special need students, including children with disabilities, English language learners and migrant children.
- Develop and deliver the Delaware Comprehensive Assessment System and analyze and report student, school, district and state test results.
- Develop and deliver the Alternative Assessment System for the special education student population and analyze and report student, school and state test results.
- Implement, support and report student, school and district accountability requirements and federal Adequate Yearly Progress mandates.
- Establish requirements for assessment inclusion for students with disabilities or limited English proficiency.

- Oversee the administration of the National Assessment of Education Progress.
- Monitor the implementation of the Delaware Recommended Curriculum.
- Develop and implement a long-term plan reflecting the adoption of math and language arts Common Core Standards.
- Provide support for operations, including health and counseling services, homeless assistance, food and nutrition services, school climate, health documentation and school support services.
- Integrate Connections to Learning concepts into school planning.
- Implement early childhood initiatives to support quality early care and education programs for all children ages infancy to kindergarten entry, including certification, professional development and data systems for early childhood education providers and Early Childhood Council activities.

##### **College and Workforce Readiness**

- Provide oversight and management of adult education, including prison education, Adult Basic Education, Groves High School, Even Start family literacy programs and some career and technical training.
- Maintain the Education Success Planning and Evaluation System, including all formula grant applications.
- Support services for children in poverty through federal Title I funding.
- Administer educational programs for veterans.
- Oversee programs for private business and trade schools.
- Administer the Delaware Center for Educational Technology, the Delaware Interscholastic Athletic Association and driver education programs.
- Administer educator licensure and certification and review alternative routes to teacher certification.
- Oversee new educator mentoring programs.
- Provide technical assistance for National Board Certification for teachers.
- Implement and monitor the Delaware Performance Appraisal System (DPAS) II, including educator training.
- Provide oversight and technical assistance to Career and Technical Education (CTE) courses in middle and high schools to better prepare students for college and the workforce.
- Complete evaluations of higher education institutions that provide educator preparation programs.

**EDUCATION**  
**95-00-00**

- Administer and provide technical assistance for federal (Title I) and state school improvement programs and grants.

**PERFORMANCE MEASURES**

	<b>FY 2011 Actual</b>	<b>FY 2012 Budget</b>	<b>FY 2013 Gov. Rec.</b>
% of students at or above proficiency in:			
English Language Arts	61	67	83
Mathematics	62	66	83
% of classes taught by highly-qualified teachers statewide	96	97	98
# of DPAS II implementations:			
districts	19	19	19
charter schools	17	19	21
# participating in administrative mentoring	80	67	70
% of CTE concentrator students graduating	97	86	87
% of CTE concentrator students meeting proficient or advanced level in mathematics	64	58	67
% of CTE concentrator students meeting proficient or advanced level in reading/language arts	75	73	79

**SCHOOL DISTRICT OPERATIONS**  
**95-02-00**

**FUNDING**

	<b>FY 2011 ACTUAL</b>	<b>FY 2012 BUDGET</b>	<b>FY 2013 GOV. REC.</b>
GF	568.4	900,442.4	960,722.3
ASF	--	--	--
<b>TOTAL</b>	<b>568.4</b>	<b>900,442.4</b>	<b>960,722.3</b>

**POSITIONS**

	<b>FY 2011 ACTUAL</b>	<b>FY 2012 BUDGET</b>	<b>FY 2013 GOV. REC.</b>
GF	13,328.4	13,425.0	13,602.0
ASF	--	--	--
NSF	--	--	--
<b>TOTAL</b>	<b>13,328.4</b>	<b>13,425.0</b>	<b>13,602.0</b>

***DIVISION FUNDING***  
***95-02-01***

**ACTIVITIES**

This budget unit contains the funding lines for district and charter operations, including Division I for salary and employment costs; Division II for energy and all other costs; and Division III for equalization.

***OTHER ITEMS***  
***95-02-02***

**ACTIVITIES**

This budget unit contains funding for: Delmar Tuition, which provides funding for the imbalance in the cost of students from Delaware sent to Maryland schools and Maryland students sent to Delmar, Delaware; the General Contingency, which provides for annual unit growth; and other miscellaneous items.

**EDUCATION**  
**95-00-00**

**BLOCK GRANTS AND OTHER PASS THROUGH PROGRAMS**  
**95-03-00**

**FUNDING**

	FY 2011 ACTUAL	FY 2012 BUDGET	FY 2013 GOV. REC.
GF	17,941.9	83,816.2	84,038.2
ASF	1,261.6	2,124.6	2,574.6
<b>TOTAL</b>	<b>19,203.5</b>	<b>85,940.8</b>	<b>86,612.8</b>

**POSITIONS**

	FY 2011 ACTUAL	FY 2012 BUDGET	FY 2013 GOV. REC.
GF	50.7	54.7	53.7
ASF	4.0	4.0	4.0
NSF	--	--	--
<b>TOTAL</b>	<b>54.7</b>	<b>58.7</b>	<b>57.7</b>

**EDUCATION BLOCK GRANTS**  
**95-03-10**

**ACTIVITIES**

- The Adult Education and Work Force Training block grant funds the following programs:
  - Adult Trade Extension/Apprentice program;
  - James H. Groves High School;
  - Adult Basic Education;
  - New Castle County Learning Center;
  - Delaware Skills Center;
  - Alternative Secondary Education Program;
  - Marine Mechanics Apprentice program;
  - Interagency Council on Adult Literacy; and
  - Diploma-at-a-Distance.
- Professional Accountability and Instructional Advancement fund contains funding for professional development, including Alternative Routes to Certification, curriculum development and professional mentoring.
- Academic Excellence block grant provides districts one unit for each 250 pupils. Districts may use these funds for a variety of purposes.

**K-12 PASS THROUGH PROGRAMS**  
**95-03-15**

**ACTIVITIES**

- Children's Beach House offers environmental education programs for moderately handicapped and

gifted students, as well as day field trips and overnight accommodations.

- Summer School - Gifted and Talented exposes student participants to intense study in either the cognitive or visual performing arts for one week. This residential program invites gifted high school juniors and is held at the University of Delaware.
- Delaware Institute for Arts in Education offers a two-week summer workshop on the arts for teachers and offers assistance in planning curriculum in the arts.
- Delaware Teacher Center is designed to respond to teacher in-service training requests.
- Online Periodicals provides online, full-text periodicals to all Delaware public high schools and middle schools through the University of Delaware.
- Teacher In Space is an aerospace resource education program designed to be a space, science and technology clearinghouse for all teachers and students in Delaware and is available to every Delaware educational institution, including public, private, parochial and university.
- Achievement Matters Campaign is an academic achievement initiative that will provide community- and school-based interventions to middle-grade students from the high-need areas of the Christina School District.
- Delaware Geographic Alliance supports instruction and materials for geography-based classroom learning. This is a partnership with the University of Delaware.
- Career Transition is a pilot program at Central School in the Red Clay Consolidated School District for young people with disabilities. A transition specialist aids the students in transitioning from school to the adult working world or to post-secondary education.

**SPECIAL NEEDS PROGRAMS**  
**95-03-20**

**ACTIVITIES**

- Interagency Resource Management Committee is used to support identification and intervention for needs of the Birth to Three program.
- Early Childhood Assistance provides early childhood educational services to eligible four year-old children living in poverty.
- Unique Alternatives provides for the placement of special needs children in private settings when there is no suitable program to serve them in Delaware public schools and provides alternative education formats within districts.

## EDUCATION

### 95-00-00

- Exceptional Student Unit - Vocational continues the program of vocational education for handicapped students.
- Related Services for the Handicapped is defined for funding basic, intensive and complex units. Rules and regulations may include, but are not limited to: speech, occupational and physical therapy; early identification and assessment of disabilities; special counseling services; and developmental, corrective or supportive services that may assist a child with a disability to benefit from special education.
- Adolescent Day program is a hospital-based, day program for youth located at the Medical Center of Delaware in Christiana. It serves students with chronic and degenerative conditions in an educational and therapeutic environment. The educational component of this program is operated by the Red Clay School District.
- Children Services Cost Recovery Project is a program aimed at the recovery of Medicaid funds for reimbursable services that are currently being provided through the schools.
- Sterck Summer Program is a summer program for students at Sterck School for the Deaf.
- Tech-Prep 2 + 2 is the state consortium on technical preparation programs.
- First State School serves children with health conditions so severe they are not able to attend school on a regular basis. The school is located within Christiana Care and is operated by the Red Clay School District.
- Prison Education provides a variety of educational services, including adult basic education, General Educational Development (GED) testing, Groves High School and vocational and life skills programs.
- Student Discipline programs provide alternative school sites for severely disruptive pupils, as well as for community-based and school-based prevention programs for moderately disruptive students.
- Early Childhood Initiatives serve children from birth to age five to ensure all young children enter school prepared to succeed (also known as Early Success).
- The Interagency Collaborative Team is authorized in 14 Del. Code § 3124. The purpose of the team is to develop a collaborative interagency approach to service delivery for children and youth with disabilities who present educational needs that cannot be addressed through the existing resources in a single agency.

#### PERFORMANCE MEASURES

	FY 2011 Actual	FY 2012 Budget	FY 2013 Gov. Rec.
# of federal gun-free violations (students)	6	0	0
# of reporting School Crimes			
Law violations (students)	1,014	750	750
# of expulsions	132	100	100
Prison education enrollment by institution:			
James T. Vaughn Correctional Center	816	794	802
Sussex Correctional Institution	338	332	336
Delores J. Baylor Correctional Institution	303	299	302
Howard R. Young Correctional Institution	463	439	444
# of inmates participating in the following prison education services:			
Adult Basic			
Education/GED	850	930	946
Groves High School	178	158	190
lifeskills	483	423	428
vocational	272	349	353

#### *DRIVER TRAINING*

#### *95-03-30*

#### ACTIVITIES

This budget unit provides funding for driver education teachers for non-public school students, summer students and operation and maintenance of driver education cars in both public and non-public schools.

#### PERFORMANCE MEASURES

	FY 2011 Actual	FY 2012 Budget	FY 2013 Gov. Rec.
# of students completing the Driver Education program:			
public	6,987	7,890	8,383
non-public	1,222	1,488	1,581
summer	389	464	557

**EDUCATION  
95-00-00**

**PUPIL TRANSPORTATION  
95-04-00**

**BACKGROUND AND ACCOMPLISHMENTS**

This budget unit provides funding and statewide oversight of transportation to and from school for Delaware school children.

During the 2010-2011 school year, approximately 107,700 students (including charter school students and excluding non-public schools) were transported over 23 million miles on 1,758 school buses. There were 160 school bus-related accidents (all school buses) in 2010-2011. In addition, over 12,200 school bus contract addendums were processed.

**FUNDING**

	<b>FY 2011 ACTUAL</b>	<b>FY 2012 BUDGET</b>	<b>FY 2013 GOV. REC.</b>
GF	5,892.6	83,129.2	83,129.2
ASF	--	--	--
<b>TOTAL</b>	<b>5,892.6</b>	<b>83,129.2</b>	<b>83,129.2</b>

**TRANSPORTATION  
95-04-01**

**ACTIVITY**

Provide transportation to and from school.

**PERFORMANCE MEASURES**

	<b>FY 2011 Actual</b>	<b>FY 2012 Budget</b>	<b>FY 2013 Gov. Rec.</b>
# of public school pupils transported	107,700	107,900	108,000
# of school bus accidents related to school bus driver	160	140	140
# of contracted school bus routes	1,207	1,214	1,221
# of district school bus routes	551	554	557

**DELAWARE ADVISORY COUNCIL ON  
CAREER AND TECHNICAL EDUCATION  
95-06-00**

**MISSION**

To strengthen and enhance the career and technical education delivery system and assist the State in providing quality programs and expanded opportunities for all residents.

**KEY OBJECTIVES**

- Evaluate CTE programs and services.
- Provide technical assistance to local school districts, agencies and other organizations to enhance and improve the CTE delivery system.
- Advise policymakers on the development of and changes to state and federal laws, rules and regulations impacting CTE.
- Promote coordination and partnerships among business, industry, labor and education to help meet the economic needs of the State.
- Disseminate relevant career information to teachers, counselors, students and the general public.

**BACKGROUND AND ACCOMPLISHMENTS**

The Delaware Advisory Council on Career and Technical Education (DACCTE) is comprised of members from the private and public sectors.

DACCTE provides policy recommendations to the Governor, General Assembly, DOE and State Board of Education on matters pertaining to CTE in Delaware.

DACCTE monitors and evaluates CTE programs and services in local school districts and other organizations to ensure these programs and services are in compliance with state and federal standards.

Several of the accomplishments during the past fiscal year include:

- Conducted statewide workshops for teachers and school administrators regarding federal and state regulations and funding for career and technical programs;
- Provided resources and funding to improve and expand the activities of the Career and Technical Student Organizations;



## EDUCATION 95-00-00

- Provided technical assistance to strengthen the state Tech Prep consortium and programs in the secondary and post-secondary schools;
- Conducted professional development activities for middle and high school administrators, teachers and counselors relating to the development and implementation of Career Pathways in secondary schools;
- Provided support and resources to Agri-Science, Business/Marketing and Family and Consumer Sciences programs through DOE; and
- Provided resources to develop the *Delaware Career Compass*, *Teachers Guide* and other technical assistance items to distribute to middle and high schools.

### FUNDING

	FY 2011 ACTUAL	FY 2012 BUDGET	FY 2013 GOV. REC.
GF	297.2	319.3	321.7
ASF	7.4	--	--
<b>TOTAL</b>	<b>304.6</b>	<b>319.3</b>	<b>321.7</b>

### POSITIONS

	FY 2011 ACTUAL	FY 2012 BUDGET	FY 2013 GOV. REC.
GF	3.0	3.0	3.0
ASF	--	--	--
NSF	--	--	--
<b>TOTAL</b>	<b>3.0</b>	<b>3.0</b>	<b>3.0</b>

### **ADVISORY COUNCIL 95-06-01**

#### ACTIVITIES

- Hold quarterly Council meetings to review pertinent issues impacting the CTE delivery system and conduct other official business.
- Conduct on-site evaluations of CTE programs and services in secondary schools to determine compliance with state and federal standards.
- Provide technical assistance to local comprehensive high schools to develop sequential career and technical pathways that will better prepare students for the workforce.
- Provide support and resources for the skills development and leadership training of CTE students.
- Design and implement professional development and curriculum workshops for individuals involved in the delivery of CTE programs and services.
- Provide leadership and support of the Tech Prep programs.

- Provide technical assistance to local advisory committees for CTE programs in middle and high schools.
- Recognize outstanding contributions of private and public sector individuals, businesses, organizations and students for career and technical programs through a statewide awards program.

### PERFORMANCE MEASURES

	FY 2011 Actual	FY 2012 Budget	FY 2013 Gov. Rec.
# of on-site CTE program reviews/monitoring visits	44	40	40
# of participants in DACCTE sponsored workshops/conferences	2,305*	525	550
# of career-related publications and newsletters disseminated	58,183	58,747	58,200

\* Includes statewide student conferences.

# EDUCATION

## 95-00-00

### DELAWARE CENTER FOR EDUCATIONAL TECHNOLOGY 95-07-00

#### MISSION

The Delaware Center for Educational Technology (DCET) empowers children through the use of information and technology to achieve higher standards in education.

DCET's goal is to create a technologically literate 21<sup>st</sup> Century workforce that will help attract and retain high technology companies in Delaware.

#### KEY OBJECTIVES

- Conduct professional development activities to assist educators with using technology in curriculum and instruction.
- Provide professional development opportunities with online courses through eLearning Delaware (eLDE).
- Assist with the integration of technology and curriculum in public education.
- Coordinate the evaluation and implementation of educational technology applications.
- Oversee the federally-funded Enhancing Education Through Technology (EETT) program.
- Operate the Partners in Technology program to refurbish donated computers/peripherals and place them in schools.

#### BACKGROUND AND ACCOMPLISHMENTS

DCET's focus is to create and maintain a modern educational technology infrastructure in Delaware's public schools, enabling students to meet the academic standards set by the State Board of Education.

Upon completion of the public school wiring project, recognized with a Computerworld Smithsonian Award, DCET initiated the Server and Infrastructure Enhancement project. These projects created the core network for the statewide pupil accounting system and ensured there was a server in every school capable of meeting the needs of the students.

eLDE has been a tremendous success in five years of offering online professional development to educators. In the five years of the grant, eLDE has trained 62 facilitators and 52 online course developers. Delaware

educators participated in 207 online courses with 2,705 successfully completing a course. In the summer of 2010, eLDE supported over 7,500 educators participating in the Orientation to the Delaware Prioritized Curriculum and Common Core Standards course through DOE and Race to the Top.

#### FUNDING

	FY 2011 ACTUAL	FY 2012 BUDGET	FY 2013 GOV. REC.
GF	965.2	830.4	838.7
ASF	--	--	--
<b>TOTAL</b>	<b>965.2</b>	<b>830.4</b>	<b>838.7</b>

#### POSITIONS

	FY 2011 ACTUAL	FY 2012 BUDGET	FY 2013 GOV. REC.
GF	7.0	7.0	7.0
ASF	--	--	--
NSF	--	--	--
<b>TOTAL</b>	<b>7.0</b>	<b>7.0</b>	<b>7.0</b>

### *DELAWARE CENTER FOR EDUCATIONAL TECHNOLOGY 95-07-01*

#### ACTIVITIES

- Manage eLDE, providing online professional development.
- Initiate professional development activities in support of districts that use the Level of Technology Implementation (LoTi) and the DETAILS for the 21<sup>st</sup> Century Questionnaire that assesses needs of teachers.
- Assist DOE with the implementation of a web-based professional development registration and management system.
- Refurbish donated computers and peripherals that are suitable for school use.
- Conduct an annual technology survey in public schools.
- Initiate statewide educational technology procurement contracts.
- Support technology planning initiatives in Delaware's public schools.
- Support the EETT program.
- Increase the number and efficiency of information systems available to school districts and schools, such as Blackboard and Elluminate.

**EDUCATION**  
**95-00-00**

**PERFORMANCE MEASURES**

	<b>FY 2011 Actual</b>	<b>FY 2012 Budget</b>	<b>FY 2013 Gov. Rec.</b>
# of teachers taking online courses through eLDE	1,407	9,000	9,000
% of districts voluntarily having teachers take the LoTi questionnaire	80	90	95

**DELAWARE HIGHER EDUCATION  
OFFICE**  
**95-08-00**

**MISSION**

The Delaware Higher Education Office (DHEO) seeks to increase awareness of and access to higher education for Delaware students, respond to public demand for guidance, effectively administer a variety of student aid and contract programs and meet higher education information needs for state policy and economic development.

**KEY OBJECTIVES**

- Ensure higher education is accessible and affordable for Delaware students by providing financial assistance and guidance services.
- Increase awareness of the benefits of higher education, support early academic and financial preparation for higher education and facilitate families saving for college.
- Identify and implement methods to ensure a seamless transition from secondary education to college.
- Enhance capacity for quality data collection and reporting and provide access to comparative regional and national data.
- Expand and promote educational opportunities through interstate agreements.
- Administer state, federal and private student financial aid programs and assist with the development of private scholarship programs.

**BACKGROUND AND ACCOMPLISHMENTS**

The Postsecondary Education Commission was created in 1975 to coordinate state efforts in higher education. In 1979, the commission was assigned administration of a need-based grant program. Other student financial aid programs, including the Delaware Higher Education Loan program, were assigned in subsequent years. In 1991, the commission was renamed the Delaware Higher Education Commission. In 2001, legislation was passed to integrate the commission into DOE. After a Legislative Joint Sunset Committee review in 2010, the Commission was dissolved, and the agency's name changed to the Delaware Higher Education Office. The roles and responsibilities of the commission were transferred to DHEO.

# EDUCATION

## 95-00-00

The office works with state agencies, school districts, Delaware colleges, community organizations and private industry to develop student guidance and financial aid programs. It also administers seven private scholarship programs, publishes the annual Scholarship Compendium (which lists approximately 200 public and private scholarships), provides information about planning and paying for college and develops college planning checklists and other materials for high school students. In partnership with the State Pension Office, the agency provides administrative and advisory support to the Delaware College Investment Plan.

In 1998, Delaware joined the Southern Regional Education Board (SREB), an interstate compact of 16 southern states. The office works closely with SREB to direct attention to key education issues; collect, compile and analyze comparable data; administer contract programs that provide student financial assistance; and participate in studies and surveys that assist states and institutions in forming long-range plans, actions and policy proposals.

The office is the designated State Higher Education Executive Officers agency and works with the organization to establish best practices in higher education.

The office is also a member of National Association of State Student Grant and Aid programs, which serves as a collaborative voice among state higher education agencies regarding directives from the U.S. Department of Education.

### FUNDING

	FY 2011 ACTUAL	FY 2012 BUDGET	FY 2013 GOV. REC.
GF	8,803.2	9,393.3	10,319.6
ASF	--	--	--
<b>TOTAL</b>	<b>8,803.2</b>	<b>9,393.3</b>	<b>10,319.6</b>

### POSITIONS

	FY 2011 ACTUAL	FY 2012 BUDGET	FY 2013 GOV. REC.
GF	6.0	6.0	6.0
ASF	--	--	--
NSF	1.0	1.0	1.0
<b>TOTAL</b>	<b>7.0</b>	<b>7.0</b>	<b>7.0</b>

## *DELAWARE HIGHER EDUCATION OFFICE*

### *95-08-01*

### ACTIVITIES

- Increase the number of Delaware students and residents pursuing post-secondary school opportunities and adult education programs.
- Improve higher education data by supporting data collection for reporting state, regional and national statistics.
- Serve as a resource for all aspects of college preparation, financing and admissions.
- Administer 23 state financial aid programs to provide appropriate need and merit-based financial aid to students.
- Provide information to students about the Academic Common Market and coordinate the approval process for eligible students to receive in-state tuition at participating southern colleges within the SREB.
- Provide financial aid opportunities for current teachers who are pursuing certification in critical shortage areas as defined by DOE.
- Administer the Delaware State Loan Repayment program to assist with repayment of outstanding loans through service commitment.
- Provide an administrative link with Fidelity Investments in promotion of the College Investment Plan.
- Collaborate with other state departments and agencies to design and implement programs to meet the needs of the State's employment shortage areas.

### PERFORMANCE MEASURES

	FY 2011 Actual	FY 2012 Budget	FY 2013 Gov. Rec.
# of recipients:			
Scholarship Incentive Program (ScIP)	1,107	1,012	1,150
Student Excellence Equals Degree (SEED)	1,700	1,700	1,700
Inspire	*	*	800

*\*New performance measure.*