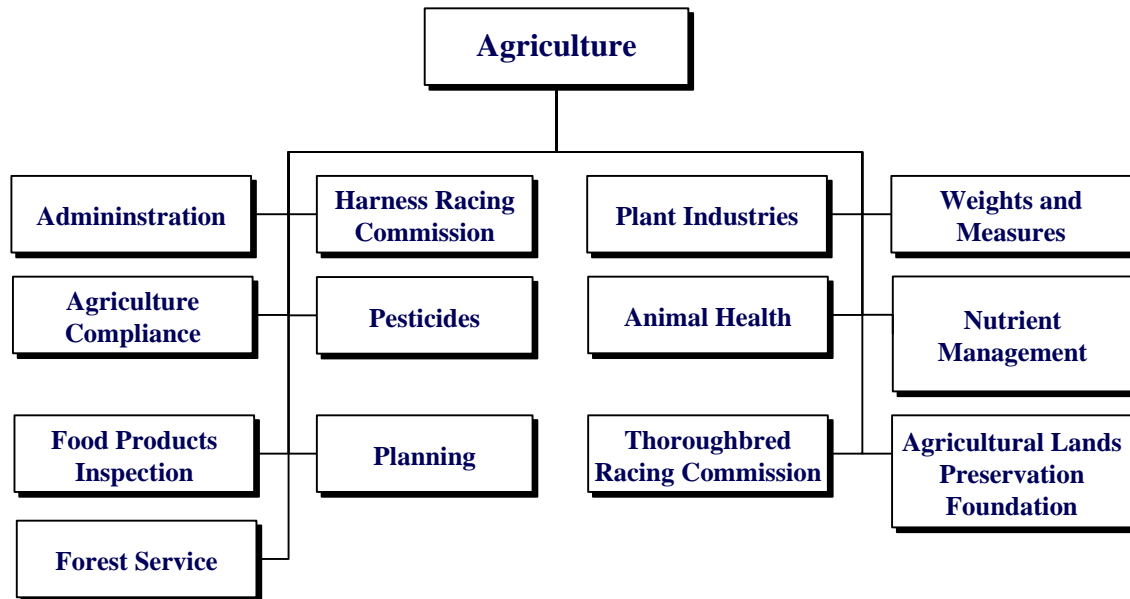


**AGRICULTURE**  
**65-00-00**



**MISSION**

To sustain and promote the viability of food, fiber and agricultural industries in Delaware through quality services that protect and enhance the environment, health and welfare of the general public.

**KEY OBJECTIVES**

The Department of Agriculture works to ensure the most efficient use of limited resources to carry out mandated responsibilities that include:

- Maintaining same-day response to all human, animal and plant health emergencies;
- Reducing residues, pathogens and contaminants in the food supply and reducing the risk of food-borne illness due to intentional sabotage of the food supply;
- Encouraging land management and conservation programs to support the Purchase of Development Rights (PDR) programs for forest and cropland;
- Identifying and supporting new opportunities to expand the sale of Delaware’s agricultural commodities and value-added products;
- Supporting Delaware’s agricultural producers and producer organizations;
- Ensuring the integrity of Delaware’s agricultural products through zero tolerance of quarantine pests and diseases for interstate and international certification;

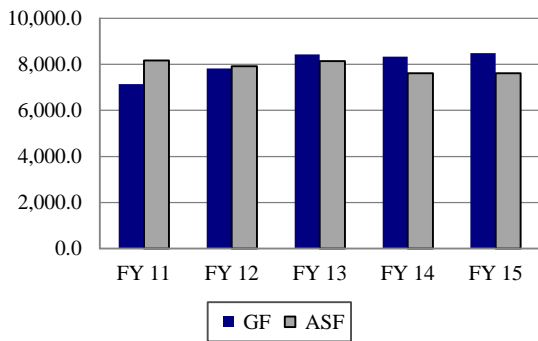
- Increasing the number and diversity of people participating in agricultural education, information and training programs;
- Developing and implementing nutrient management practices that protect ground and surface water, while maintaining a viable agricultural industry;
- Collecting data and directing policies that protect the State’s natural resources and environment from adverse effects and improve water quality;
- Facilitating research by state institutions and private interests;
- Assisting land owners in controlling noxious weeds and non-native (invasive) plant species to maintain agricultural productivity and natural resource preservation;
- Continuing to streamline operations and reorganize functional components within the department to better serve the agricultural community and general public;
- Identifying and utilizing alternative funding sources in support of the department’s mission and goals;
- Strengthening programmatic relationships with the Department of Safety and Homeland Security, Delaware Emergency Management Agency and Division of Public Health in support of emergency response efforts;
- Promoting and ensuring the integrity of the horse racing industry;

# AGRICULTURE

## 65-00-00

- Ensuring the integrity of weights and measures statewide in support of fair commerce for Delaware’s consumers;
- Ensuring the safe and appropriate use of pesticides and herbicides;
- Ensuring the accurate labeling and nutrient content of feed and fertilizer;
- Conserving, protecting and enhancing Delaware’s forests through education, management and professional assistance; and
- Promoting risk management education.

**Five-Year Appropriation History**



### FUNDING

	FY 2014 ACTUAL	FY 2015 BUDGET	FY 2016 GOV. REC.
GF	8,407.4	8,485.0	8,481.5
ASF	4,628.8	7,614.5	7,614.5
<b>TOTAL</b>	<b>13,036.2</b>	<b>16,099.5</b>	<b>16,096.0</b>

### POSITIONS

	FY 2014 ACTUAL	FY 2015 BUDGET	FY 2016 GOV. REC.
GF	82.8	82.8	81.8
ASF	44.0	44.0	44.0
NSF	15.2	15.2	15.2
<b>TOTAL</b>	<b>142.0</b>	<b>142.0</b>	<b>141.0</b>

## AGRICULTURE

### 65-01-00

### BACKGROUND AND ACCOMPLISHMENTS

#### Administration

The Office of the Secretary serves as the point of contact between agriculture, the largest industry in the State, and state government. The Secretary of Agriculture represents the agricultural community and related sectors of the economy in all facets of state government. Under the direction of the Office of the Secretary, the department informs the public about contributions made by the agricultural community and services provided by the department to consumers. The department has an “educate before we regulate” policy and continues to enhance communication with the regulated community to obtain full compliance with the laws, rules and regulations.

The Office of the Secretary provides the Secretary of Agriculture with administrative support, in addition to necessary personnel, financial and computer support services. The Information and Education section provides outreach functions to the agricultural community, including expansion of educational programs and other communications from the department.

The department is tasked with enhancing the economic viability of agriculture in Delaware. The section develops and implements a marketing strategy for Delaware’s agricultural products and services. The section also serves on various commodity boards. This aids the diversification of agriculture, enhances Delaware’s agricultural product branding, recruits agricultural businesses and markets agricultural products and services locally, regionally, nationally and internationally.

#### Agriculture Compliance

The Agriculture Compliance section includes a modern laboratory that provides analytic services to Delaware farmers and residents. Its capabilities include precise nutrient analysis of granular, liquid fertilizer and poultry litter for macro nutrients such as nitrogen, phosphorus and potassium, as well as micro nutrients such as magnesium, sulfur and heavy metal analysis. The results generated by the laboratory are ultimately used to help ensure nutrients are properly applied and thus help to protect water quality and our environment. The laboratory provides the same level of analysis for livestock feeds and pet foods.

# AGRICULTURE

65-00-00

The Agricultural Compliance section also regulates the sale of agricultural products in the State, such as fertilizer and feeds, by requiring product registration prior to sale.

## **Food Products Inspection**

The Food Products Inspection section safeguards public health by regulating meat, poultry and egg processors, as well as providing inspection and grading services to poultry and shell-egg processors and fruit and vegetable growers. Delaware is a member of the Federal-State Cooperative Inspection program. The State Meat and Poultry Inspection program maintains standards that are equal to the federal inspection program. This section protects consumers by using a science-based inspection system, employing recall effectiveness checks and product testing through the Pathogen Reduction program.

Delaware also works with the U.S. Department of Agriculture (USDA) in cooperative grading agreements with state departments of agriculture and other agencies. Under these federal-state agreements, the licensed graders perform work at point of origin and retail outlets grading various commodities. The USDA, Agricultural Marketing Service, establishes basic grading policies and procedures, which describe quality requirements for each grade of a commodity, giving the industry a common language for selling and buying.

## **Forest Service**

Forests, both rural and urban, are a vital state resource, providing numerous benefits to all Delawareans. Delaware's rural forests comprise approximately 30 percent (375,000 acres) of the State, approximately 85 percent of which are privately owned. Delaware's forests face many challenges, including wildfires, insects, disease, poor management techniques, non-native (invasive) species and fragmentation by development.

The mission of the Forest Service section is to conserve, protect and enhance Delaware's forests through education, management and professional assistance. The Forest Conservation program helps landowners and communities improve their forest resources through education and technical assistance. The Forest Protection program strives to protect and improve forest health through monitoring, watershed protection and wildfire prevention and suppression. The Forestry Education program educates and informs residents about the importance of forests through the management of the three state forests, two state forest education centers and educational programs for children and adults.

## **Harness Racing Commission**

The Delaware Harness Racing Commission (DHRC) is the regulatory body charged with ensuring the integrity and fairness of harness racing in Delaware. DHRC has jurisdiction over all associations and licensees that participate in harness racing.

A primary objective of the DHRC is to protect the public interest in pari-mutuel wagering contests and all aspects leading up to and following the conclusion of those races.

DHRC provides the opportunity for growth and regulatory oversight to the Delaware Standardbred Breeders' Fund. By providing fairness and a level field of competition through objective standards, DHRC strives to ensure due process in administrative matters, respond to public concerns and provide information regarding the industry and DHRC operations.

## **Pesticides**

The Pesticides section has authority under the Delaware Pesticide Law and Federal Insecticide, Fungicide and Rodenticide Act to regulate the sale and use of pesticides in the State.

The section emphasizes education and offers a comprehensive pesticide applicator certification and training program. The educational program is complemented by an ongoing compliance assistance and enforcement program of inspections and sampling at the various levels of pesticide distribution and use.

The section administers a groundwater protection program to ensure the use of pesticides is not degrading ground and drinking water quality. The centerpiece of the program is a statewide shallow groundwater monitoring network comprised of over 60 domestic and agricultural wells and 108 dedicated monitoring wells owned by the State. The section also monitors the depth of the water table to help predict water supply for domestic and agricultural use.

## **Planning**

The Planning section's services include land-use and comprehensive planning, agricultural preservation, forestland preservation and the Young Farmers program. Combining farmland preservation and planning coordination has helped stem the loss of farmland and forestland in Delaware.

## **Plant Industries**

The Plant Industries section is the plant and plant pest regulatory enforcement authority. Its primary mission is to protect agriculture, the environment and residents

# AGRICULTURE

65-00-00

from the damaging effects of plant, honeybee pests and noxious weeds. The section also facilitates domestic and international trade of plants, plant products, grain, seed and agricultural commodities.

The Plant Industries section has the authority to quarantine certain products, plants and/or pests as necessary to prevent the spread of economically or environmentally harmful pests. Plant Industries also works in cooperation with the USDA, Plant Protection and Quarantine Unit and the University of Delaware Cooperative Extension Service to conduct surveys for non-native pests and pests of export significance.

The Plant Industries section is also responsible for the Apiary Inspection program, which requires beekeepers to annually register their colonies and locations.

The Seed Laboratory certifies granaries and trains and licenses grain inspectors; provides seed testing services to farmers; collects and tests official seed samples; ensures labeling conforms to the Seed Law; and conducts the Seed Certification program.

## **Animal Health**

The Animal Health section is charged with preventing the introduction and spread of contagious and infectious diseases into and within the animal and poultry population of the State. This is accomplished by maintaining a diagnostic laboratory, as well as cooperating with the poultry diagnostic laboratory of the University of Delaware.

Personnel respond to reports of potential disease problems from veterinarians and owners of livestock, poultry and pets. Staff visit farms, dairies and livestock auctions to collect biological specimens for analysis and diagnosis of disease. In most instances, staff members inform the veterinarian and owner of the animal's diagnosis and suggested control methods.

When certain serious and highly contagious diseases are diagnosed, the state veterinarian, through the authority of the Secretary of Agriculture, may quarantine or even destroy the animal, herd or flock to prevent the spread of that disease to other premises.

## **Thoroughbred Racing Commission**

The Delaware Thoroughbred Racing Commission (DTRC) regulates and oversees the sport of Thoroughbred and Arabian racing in the State. Its primary objectives and principles are to protect, preserve and promote agriculture and horse racing. This is accomplished through efforts to prevent and eliminate corrupt practices, ensure fairness in decisions affecting licensees and patrons, ensure due process in

administrative proceedings, facilitate the promulgation of rules and regulations that allow the racing association and horsemen to remain competitive with surrounding jurisdictions and provide information concerning the industry and DTRC operations. DTRC ensures the State and the betting public receive fair percentages of the wagering dollar with periodic accounting audits.

## **Weights and Measures**

The Weights and Measures section is responsible for the regulation of all commercial transactions involving weighing and measuring, all devices used commercially to determine weight, measure or count and the enforcement of Delaware packaging and labeling regulations. Major activities of this section include inspection of retail packages, gas pumps, fuel oil and propane meters, scales, grain moisture meters, point of sale scanning systems, parking meters and other timing devices.

This section provides both in-house and off-site training to businesses and service technicians. The Voluntary Serviceperson Registration program has enrolled more than 250 technicians, which ensures a high degree of confidence in the accuracy of weighing and measuring devices used in Delaware.

## **Nutrient Management**

Pursuant to provisions of the 1972 Clean Water Act, the Department of Natural Resources and Environmental Control (DNREC) and the U.S. Environmental Protection Agency signed a memorandum of understanding (MOU), which set forth a plan to restore the quality of Delaware's impaired waters to achieve federal water quality standards. The MOU requires the development and implementation of programs to reduce non-point source water pollution. Studies indicate excess nutrient loading of surface lands has a negative impact on the quality of both surface and groundwater. The Nutrient Management program supports the MOU and carries out many programs to further the goals of improved water and soil quality, as well as ensuring the long-term vitality of the agricultural industry.

The Nutrient Management Law (3 Del. C. § 2200 et. al.) created the Delaware Nutrient Management Commission and Nutrient Management program. The program regulates activities that involve the generation, handling and application of fertilizer nutrients, including animal manure. The program administers nutrient certifications, planning, reimbursement, poultry litter relocation, farm audits, complaint resolution, Concentrated Animal Feeding Operation (CAFO) permitting and a meaningful environmental stewardship recognition strategy.

# AGRICULTURE

## 65-00-00

### **Agricultural Lands Preservation Foundation**

Since 1992, the Delaware Agricultural Lands Preservation Foundation has enrolled over 167,000 acres and 1,200 farms in agricultural preservation districts and district expansions in Delaware.

With expenditures to date of \$206 million, 796 properties totaling 115,000 acres have been permanently protected. These acres of permanently preserved agricultural land account for 20 percent of the total land in farms and 8 percent of the State's total land area. Delaware has one of the most successful Agricultural Lands Preservation programs in the nation. The program continues to partner with the federal government for additional funding, and over the life of the program has received funding from all three counties to supplement the program.

Additionally, the Young Farmers program was established in Fiscal Year 2012 to help individuals enter into agriculture while also preserving farmland. This program has helped 25 young farmers purchase 2,100 acres of farmland.

---

### **ADMINISTRATION**

#### **65-01-01**

---

#### **ACTIVITIES**

- Oversee all aspects of plant and animal emergency response plans and activities.
- Represent agriculture on councils and committees to address natural resource projects.
- Oversee the department's budget development, presentation and administration, as well as personnel management.
- Develop, present and provide information for various legislative initiatives that affect agriculture in Delaware.
- Provide direction and leadership to the department and seek input from the agricultural community in policy development.
- Serve Delaware farmers and agribusinesses with leadership and education in the areas of marketing and promotion to increase sales and the value of their products.
- Identify and obtain grant and alternative funding opportunities.
- Promote both the department and the agricultural community, as well as inform the general public.
- Partner with the Delaware Economic Development Office, USDA, other state departments of agriculture and private industry to identify barriers in the

promotion and marketing of agricultural products and offer solutions to remove those barriers.

- Implement an agricultural marketing plan that channels Delaware's agricultural products to local, regional, national and international markets.
- Increase name recognition of Delaware's agricultural products regionally and nationally.

#### **PERFORMANCE MEASURES**

	<b>FY 2014 Actual</b>	<b>FY 2015 Budget</b>	<b>FY 2016 Gov. Rec.</b>
\$ of specialty crop grant funding	229,085	336,756	337,000
\$ of gross receipts for Delaware farmers markets (millions)	2.5	2.2	2.7

---

### **AGRICULTURE COMPLIANCE**

#### **65-01-02**

---

#### **ACTIVITIES**

- Administer a registration program for the commercial sale of livestock feeds, pet foods, fertilizers, soil conditioners and limes for farm and non-farm use in Delaware.
- Administer a registration program for commercial fertilizer mixing facilities located in Delaware.
- Collect and perform laboratory analysis on samples of livestock feed, pet food, fertilizer, soil conditioners and lime to make sure they are compliant with Delaware Code and that the products meet the guaranteed analysis on their labels.
- Conduct laboratory analysis of poultry litter for Delaware farmers to verify nutrient content and thereby assist with compliance of state and federal laws pertaining to their nutrient management plans.
- Test feed, pet food and fertilizer submitted by Delaware small businesses for nutrient content, protein, fat, fiber and contaminants to assist with developing and growing their businesses.



# AGRICULTURE

## 65-00-00

### PERFORMANCE MEASURES

	FY 2014 Actual	FY 2015 Budget	FY 2016 Gov. Rec.
# of samples tested for pet food/animal/livestock feed: official submitted	112 130	150 130	200 130
# of samples tested for fertilizer and liming materials: official submitted	66 13	100 13	150 13
# of official samples tested for frozen desserts	33	40	50
# of submitted samples tested for livestock manure and poultry litter	1,423	1,450	1,450
# of pet food/animal/livestock feed products approved for registration	16,617	10,000	10,000
# of fertilizer and liming materials approved for registration	5,517	3,500	3,500

### *FOOD PRODUCTS INSPECTION*

#### *65-01-03*

#### ACTIVITIES

- Inspect meat and poultry and submit samples for laboratory analysis.
- Conduct systematic statewide monitoring of businesses in food marketing and distribution of both domestic and imported products for freshness, adulteration and labeling.
- Conduct statewide commodity grading at product point of origin.
- Provide food service safety training programs.

### PERFORMANCE MEASURES

	FY 2014 Actual	FY 2015 Budget	FY 2016 Gov. Rec.
# of food inspected, grade verified (millions): Grade A poultry (lbs)	599	520	520
Grade A eggs (dozens)	4.4	5.7	5.7
fruits and vegetables (lbs)	0.3	0.4	0.4
# of retail shell egg graded inspection (approximately 450 stores): inspections	109	400	300
violations	1	3	3
# of food services safety training programs/interactive encounters with various groups	35	25	27
# of meat and poultry products (lbs): inspected (millions)	10	6	6
condemned (thousands)	26	12	12
# of compliance enforcement-trucking companies, retail stores and state agencies: reviews	527	580	590
product condemned (lbs)	75	75	75

### *FOREST SERVICE*

#### *65-01-04*

#### ACTIVITIES

- Provide technical and financial assistance to landowners for activities such as reforestation, timber stand improvement, forest management plans and timber harvests to improve Delaware's forests.
- Reduce the impacts of wildfire through prevention education programs and firefighting training in wildland fire suppression techniques.
- Provide technical assistance to communities, civic associations, developers, planners and homeowners, as well as financial assistance through the Urban and Community Forestry program grant to improve Delaware's urban forest resources.
- Maintain and, where possible, improve forest health by diagnosing forest pest infestations, providing treatment advice and monitoring forest pests through aerial and ground surveys.
- Educate Delawareans about the importance of forest management by demonstrating proper forestry techniques at the three state forests, offer educational opportunities at the state forest education centers and provide educational programs to the public.
- Protect water quality during forest management operations by educating loggers and landowners

# AGRICULTURE

## 65-00-00

about forestry best management practices and monitoring forestry operations.

### PERFORMANCE MEASURES

	FY 2014 Actual	FY 2015 Budget	FY 2016 Gov. Rec.
% of timber harvests on non-industrial privately-owned lands which follow a forest management plan	40	50	50
% of towns and cities recognized by the National Arbor Day Foundation as Tree City USA communities (57 communities)	30	35	35
% of volunteer fire companies that participate in wildfire suppression education programs (61 companies)	57	60	60
% of public and private elementary schools that participate in Forest Service educational programs (173 schools)	45	70	70

### ***HARNES RACING COMMISSION*** ***65-01-05***

#### ACTIVITIES

- Accredite the Harness Racing Commission's Presiding Judge, Associate Judge and three alternate associate judges through a national racing accreditation organization.
- Provide regulatory oversight of approximately 4,000 annual racing events during the harness racing seasons at Dover Downs and Harrington Raceway.
- Collect pre-race and post-race urine and blood samples from equine contestants from each race to ensure honesty and integrity in the running of races.
- Ensure relevant and appropriate animal welfare standards are met.
- License all participants and associates annually, fingerprint periodically and review background information to ensure participants in the industry are not a risk to the integrity of the sport.
- Conduct administrative investigations regarding rule violations.

### PERFORMANCE MEASURES

	FY 2014 Actual	FY 2015 Budget	FY 2016 Gov. Rec.
% accreditation of commission's judges	100	100	100
% oversight of racing events	100	100	100
# of equine samples tested for prohibitive medications:			
with blood	2,904	2,800	2,500
with urine	2,604	2,500	2,300
# of pre-race blood gas samples collected to determine metabolic alkalosis	5,233	5,200	4,900
# of human samples tested for prohibitive substances	173	170	165
# of breathalyzer tests administered to licensees	8,400	8,200	7,900
# of racing participants licensed	2,123	2,125	2,125

### ***PESTICIDES*** ***65-01-06***

#### ACTIVITIES

- Administer a licensing program for commercial pesticide applicators.
- Provide certification and training for restricted use pesticide users.
- Issue permits to dealers of restricted use pesticides sold in Delaware.
- Register pesticide products sold or distributed in Delaware.
- Investigate complaints of pesticide use/misuse.
- Attend large public events to educate consumers and homeowners on food safety, integrated pest management, ground and drinking water protection and safe urban pesticide use.
- Collect and recycle high-density polyethylene pesticide containers.
- Provide compliance assistance to the regulated community and, as necessary, prosecute violations of state and federal pesticide statutes.
- Monitor and assess groundwater to ensure pesticide use does not degrade ground and drinking water quality.
- Cooperate with other state and local agencies on broad water quality and quantity issues.
- Provide laboratory services for testing of animal, plant soil and other matrices where injury or contamination from pesticides is suspected.
- Protect consumers by inspecting termite pre-treatment applications and treatments subject to the requirements set forth in the Delaware Pesticide Rules and Regulations.

# AGRICULTURE

## 65-00-00

- Provide farmers, commercial applicators, nurseries, greenhouses, golf courses and pest control businesses a disposal program for un-wanted, outdated or cancelled pesticides.

### PERFORMANCE MEASURES

	FY 2014 Actual	FY 2015 Budget	FY 2016 Gov. Rec.
% of sample analysis related to priority incidents	27	50	50
# of pesticide containers recycled	46,600	44,400	44,800
% of actionable inspections	57	32	31
# of pesticide applicators certified	2,973	3,150	3,300

### **PLANNING** **65-01-07**

#### ACTIVITIES

- Review all land development projects, assess the impacts to agriculture and advocate for mitigation of negative impacts.
- Provide strategic planning consultation to the department.
- Provide reliable, current agricultural statistics and analysis to a variety of customers.

### PERFORMANCE MEASURE

	FY 2014 Actual	FY 2015 Budget	FY 2016 Gov. Rec.
% of zoning and subdivision proposals reviewed affecting agriculture	54	45	50

### **PLANT INDUSTRIES** **65-01-08**

#### ACTIVITIES

- Assist and cooperate with USDA, Plant Protection and Quarantine unit regarding export certification of plants and plant products.
- Process permits for the interstate movement of plant pests.
- Inspect fields and facilities for agricultural biotechnology permits.
- Facilitate post-entry quarantine inspections.
- Process permits for the interstate movement of soil.
- Enforce federal and state quarantines.
- Administer and conduct the Cooperative Agricultural Pest Survey program.

- License and inspect all nursery businesses and conduct certification inspections for nursery stock shipped interstate or for export.
- Detect and control noxious weed infestations through the implementation of compliance agreements.
- Provide specialized spray equipment to the public for the application of herbicides.
- Maintain grain inspection standards for all certified granaries and provide training to inspectors.
- Operate the Seed Certification program and test all types of seed offered for sale to determine compliance with the Seed Law.
- Register and inspect all honeybee colonies and promote the beekeeping industry.
- Provide ongoing public education activities for all Plant Industry programs.

### PERFORMANCE MEASURES

	FY 2014 Actual	FY 2015 Budget	FY 2016 Gov. Rec.
# of certified acres inspected	9,934	7,350	7,750
% of businesses inspected for Seed Law compliance	60	65	65
% of retail nursery locations inspected	35	36	36
% of acres infested with noxious weeds treated or under a control program	60	70	70
# of registered bee colonies inspected	1,018	1,000	1,000
% of reviewed regulatory permits meeting requirements and reviewed within 10 days	100	100	100
# of key pests in statewide survey	16	16	16

### **ANIMAL HEALTH** **65-01-09**

#### ACTIVITIES

- Prevent the spread of contagious diseases, including those transmitted from animals to humans. Ensure the safety of the general public by accepting suspect rabies animals, recording all pertinent information and collecting proper specimens for the accurate diagnosis of diseases.
- Collect surveillance samples and observe poultry for signs of illness to protect the health status of the poultry industry.



## AGRICULTURE 65-00-00

- Assist Delmarva broiler companies in placing healthier baby chicks in the field through the Hatchery Sanitation program.
- Ensure that effective diagnostic services are available for rapid detection of livestock and poultry diseases.
- In coordination with other federal, state and local agencies, create and update emergency plans that will be used to help ensure animal health and public health during zoonotic outbreaks and continuity of commercial operations during an emergency event.

### PERFORMANCE MEASURES

	FY 2014 Actual	FY 2015 Budget	FY 2016 Gov. Rec.
# of auction visits	60	60	60
# of Avian influenza (AI) tests	4,207	4,000	4,000
# of positive AI tests	1	0	0
# of hatchery visits	48	48	48
# of Equine Infectious Anemia tests performed	1,676	1,970	1,800
# of necropsies performed (mammalian)	20	28	30
% of human exposure rabies specimens with same-day turnaround time	100	100	100

### ***THOROUGHBRED RACING COMMISSION 65-01-10***

#### ACTIVITIES

- Receive accreditation of the Thoroughbred Racing Commission's three full-time racing stewards through the Racing Officials Accreditation program.
- Oversee approximately 1,110 annual racing events in the State.
- Maintain the highest standards in the Forensic Equine Drug Testing programs.
- Collect post-race urine and blood samples from equine contestants from each race plus designated samples.
- Collect out of competition testing (OCT) samples from horses for the official laboratory to detect the presence or use of blood doping agents.
- Annually license, fingerprint periodically and consistently review background information to ensure participants in the industry are not a risk to the integrity of the sport.
- Conduct administrative investigations regarding rule violations.

### PERFORMANCE MEASURES

	FY 2014 Actual	FY 2015 Budget	FY 2016 Gov. Rec.
% accreditation of commission's stewards	100	100	100
% oversight of racing events	100	100	100
# of equine samples tested for prohibitive medications	1,159	1,200	1,220
# of pre-race blood gas samples collected to determine metabolic alkalosis	626	526	530
# of equine samples collected and tested for blood doping agents pursuant to OCT program	120	135	180
# of applicants licensed	4,740	5,000	5,000

### ***WEIGHTS AND MEASURES 65-01-11***

#### ACTIVITIES

- Conduct inspections of gasoline, diesel and kerosene pumps; small and medium commercial scales commonly found in supermarkets or medium scales used for livestock and feed; large capacity commercial scales; Delaware State Police (DSP) and county police enforcement scales; and commercial home delivery fuel oil and propane trucks to ensure compliance with national standards.
- Conduct price verification inspections to ensure the accuracy of scanner pricing systems.
- Inspect consumer packages for compliance with net weight, measure, count and labeling regulations.
- Inspect grain moisture meters used to determine the value of grain sold and purchased.
- Inspect a statistical sampling of various timing devices, which include parking meters, laundromats, car washes and air pumps.
- Respond to consumers who register a complaint concerning possible violation of the Weights and Measures Law, a questionable marketing practice or an incorrect device within 24 hours.
- Inspect gasoline samples for octane requirement compliance and water content.
- Administer the Delaware Voluntary Serviceperson Registration program for approved servicemen that demonstrate proficiency in their field and fulfill program requirements.
- Administer the Delaware Weighmaster Licensing program for users of commercial vehicle weighing scales.
- Provide resources and materials to consumers and businesses to increase awareness of weights and measures issues.

# AGRICULTURE

## 65-00-00

### PERFORMANCE MEASURES

	FY 2014 Actual	FY 2015 Budget	FY 2016 Gov. Rec.
# of consumer complaints	76	65	85
# of small/large scales: tested	4,077	4,225	4,100
rejected	441	295	450
# of truck scales: tested	41	225	230
rejected	3	30	31
# of petroleum meters: meters inspected	10,006	9,600	10,500
rejected	1,963	1,150	2,050
# of vehicle tank meters: tested	379	365	390
rejected	59	28	65
# of moisture meters: tested	61	60	60
rejected	1	2	2
# of DSP enforcement scales: tested	14	24	24
rejected	1	2	2
# of package lots: audited	1,050	1,550	1,250
subjected to enforcement inspection standards	788	1,160	900
rejected	302	302	320
# of price verifications: performed	373	480	450
failed	14	25	20
# of technicians registered	263	236	275
# of licensed weighmasters	905	880	915
# of gas samples: checked for octane compliance	346	380	380
sent to fuel lab for further testing	2	4	4
rejected	0	2	2

### NUTRIENT MANAGEMENT 65-01-12

#### ACTIVITIES

- Develop and implement incentive and market-based programs to promote alternative-use practices for excess nutrients generated in Delaware.
- Institute a program to develop and fund nutrient management plans according to law and program standards.
- Provide nutrient handlers with initial and continuing educational opportunities to implement nutrient management certification requirements.
- Implement the State's National Pollutant Discharge Elimination System permitting program for CAFOs in partnership with DNREC and pursuant to the Clean Water Act, federal regulations and MOU.

- Develop and implement demonstration projects within the farm community for best management practices.
- Audit nutrient management activities to ensure compliance and high quality services.
- Respond to complaints regarding nutrient management practices.
- Recognize environmental stewards within the agricultural community with the cooperation and financial support of the agribusinesses and poultry companies.
- Facilitate and actively fund research projects according to priorities that will balance science-based policy development with modern and responsible nutrient management practices.

### PERFORMANCE MEASURES

	FY 2014 Actual	FY 2015 Budget	FY 2016 Gov. Rec.
Poultry litter-manure relocated within Delaware for land application (tons)	22,645	25,000	25,000
Poultry litter-manure exported from Delaware for land application (tons)	20,815	25,000	25,000
Poultry litter-manure relocated to an alternative use project (tons)	26,394	30,000	30,000
% of cropland and nutrient applied land managed under a current plan developed by a certified consultant	95	100	100
Acres managed under an updated nutrient management plan	94,510	125,000	125,000
# of nutrient consultants	121	115	115
# of commercial handlers	78	75	75
# of private applicators	1,153	1,100	1,000
# of nutrient generators	520	525	520
# of nutrient management farm audits	60	50	50
# of CAFO farm audits performed	100	150	150
# of constituent complaints: received	19	40	40
resolved	19	40	40
# of CAFO permits	1	100	100

**AGRICULTURE**  
**65-00-00**

***AGRICULTURAL LANDS PRESERVATION  
FOUNDATION  
65-01-13***

**ACTIVITY**

- Administer the Farmland Preservation program and the Young Farmer Loan program to preserve Delaware farmland.

**PERFORMANCE MEASURES**

	<b>FY 2014 Actual</b>	<b>FY 2015 Budget</b>	<b>FY 2016 Gov. Rec.</b>
Acres of prime farmland permanently preserved	4,360	1,500	5,000
# of new participants in the Young Farmers program	4	0	7