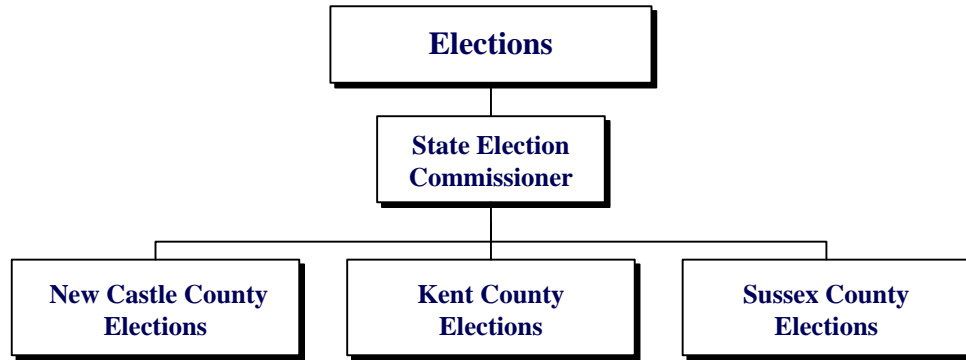


ELECTIONS

70-00-00



MISSION

The mission of the Department of Elections is to provide a standardized, secure and accurate election system for the residents of Delaware. The department provides residents with voter registration information and structure needed to participate, as well as access to campaign finance reports.

KEY OBJECTIVES

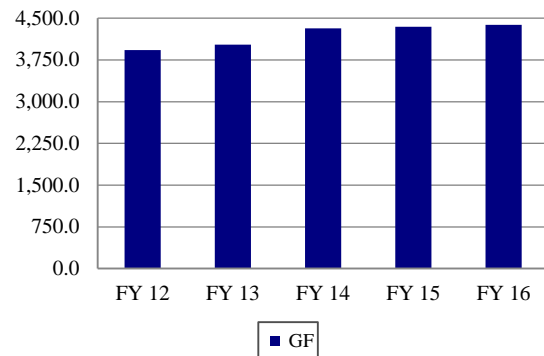
- Ensure the standard administration of Delaware election laws.
- Use technology to improve services to Delaware residents here and abroad.
- Conduct elections for Delaware residents from presidential primaries to school and municipal elections.
- Track and post campaign finance reports.

BACKGROUND AND ACCOMPLISHMENTS

The department has led the nation in developing the first statewide electronic voting system. In addition, voting machines have audio modules, making them accessible for persons with visual disabilities.

Delaware successfully maintained a statewide voter registration database long before it became a federal mandate.

Five-Year Appropriation History



FUNDING

	FY 2015 ACTUAL	FY 2016 BUDGET	FY 2017 GOV. REC.
GF	5,897.7	4,378.5	4,479.7
ASF	268.5	--	--
TOTAL	6,166.2	4,378.5	4,479.7

POSITIONS

	FY 2015 ACTUAL	FY 2016 BUDGET	FY 2017 GOV. REC.
GF	42.0	42.0	42.0
ASF	--	--	--
NSF	--	--	--
TOTAL	42.0	42.0	42.0

STATE ELECTION COMMISSIONER

70-01-01

MISSION

Coordinate statewide activities and standardize election policies and practices. The office also oversees campaign finance reporting and Help America Vote Act (HAVA) funding.

ELECTIONS

70-00-00

KEY OBJECTIVES

- Maintain a statewide voter registration system.
- Coordinate with each county to conduct all mandated elections.
- Educate and assist municipalities in the conduct of their elections.
- Track and post campaign finance reports.

BACKGROUND AND ACCOMPLISHMENTS

The office provides services to all residents as required by state and federal laws to ensure uniform access to the electoral process.

Delaware has received national recognition for the Electronic Signature project, which uses technology to create a seamless, paperless connection between the Division of Motor Vehicles (DMV) and the Department of Elections. In addition, the office has been recognized for *iVOTE.DE.Gov*. This technology will allow Elections to provide online services to all citizens, as well as be added to the online systems of the Departments of Health and Social Services (DHSS) and Labor (DOL), making real-time, electronic submissions the norm for all agencies mandated to process voter registration.

In response to the federal mandate to provide electronic transmission of absentee ballots to military and overseas voters, staff developed its own vendor-free system saving significant annual maintenance fees.

A new Campaign Finance Information Reporting System has been implemented and all filers now file electronically.

The office participates in Student/Parent Mock Elections, in cooperation with the Departments of Technology and Information, State and Education. In addition, the office partners with The News Journal, the University of Delaware and the League of Women Voters.

As the Chief State Election Official, the Commissioner administers HAVA funding, which mandates federal standards for voting machines, voter registration and access for Delaware voters. These funds have been used to upgrade voting machines, make polling places accessible and increase the use of technology in all processes.

FUNDING

	FY 2015 ACTUAL	FY 2016 BUDGET	FY 2017 GOV. REC.
GF	1,211.0	3,600.8	3,693.8
ASF	--	--	--
TOTAL	1,211.0	3,600.8	3,693.8

POSITIONS

	FY 2015 ACTUAL	FY 2016 BUDGET	FY 2017 GOV. REC.
GF	12.0	42.0	42.0
ASF	--	--	--
NSF	--	--	--
TOTAL	12.0	42.0	42.0

ACTIVITIES

- Administer the Organized Voter Registrar program, which involves training voter registrars throughout the State.
- Administer HAVA, which sets guidelines for election improvements.
- Coordinate election efforts in each county to ensure uniformity.
- Maintain the statewide voter registration file.
- Collect and report unofficial results of presidential primaries, state primaries, general and special elections in a timely manner.
- Provide support and assistance to candidates and committees regarding campaign finance laws.
- Work with other state agencies to ensure accuracy regarding the restoration of felon voting rights.
- Implement programs and systems that enable access to information during non-business hours.
- Support municipalities regarding election and campaign finance laws.

PERFORMANCE MEASURES

	FY 2015 Actual	FY 2016 Budget	FY 2017 Gov. Rec.
# of candidate committees	2,000	2,039	2,085
# of requests for campaign finance assistance	3,000	3,900	4,300
# of referenda elections	8	11	13
# of school board elections	13	16	16

NEW CASTLE COUNTY ELECTIONS

70-02-01

MISSION

New Castle County Elections provides first-class service to residents by registering them to vote and conducting fair and impartial elections.

ELECTIONS

70-00-00

KEY OBJECTIVES

- Provide quality service to all customers.
- Register Delaware residents who apply and are eligible to vote.
- Remove ineligible voters from the list of registered voters.
- Conduct elections in an efficient and impartial manner, as mandated by 14 and 15 Del. C.
- Educate the public regarding the elections process and the use of the State's electronic voting machine.
- Enhance efficiency by streamlining operational procedures.

BACKGROUND AND ACCOMPLISHMENTS

New Castle County Elections continued to work through the State Election Commissioner to improve the election process and used technology and staff-initiated innovations to improve efficiency and reduce costs in a challenging fiscal climate.

New Castle County Elections conducted School Board Elections in four school districts and three Current Expense Referenda in two different school districts. New Castle County Elections also supported four municipal elections and four outreach elections to elect Student Government officers in various schools.

New Castle County Elections continued to use the warehouse office space to make in-person absentee voting more convenient to New Castle County citizens. This service was available six days a week during the weeks before both the 2014 Primary and General Elections.

FUNDING

	FY 2015 ACTUAL	FY 2016 BUDGET	FY 2017 GOV. REC.
GF	2,412.7	473.8	482.0
ASF	217.3	--	--
TOTAL	2,630.0	473.8	482.0

POSITIONS

	FY 2015 ACTUAL	FY 2016 BUDGET	FY 2017 GOV. REC.
GF	15.0	--	--
ASF	--	--	--
NSF	--	--	--
TOTAL	15.0	--	--

ACTIVITIES

- Register voters.
- Maintain an accurate voter registration database.
- Plan upcoming elections.
- Conduct elections in accordance with state and federal laws.
- Educate staff and election officers.
- Produce printed materials and resources.
- Engage in public outreach and education initiatives.
- Maintain the election system infrastructure.
- Conduct elections for unions, student governments and other entities.

PERFORMANCE MEASURES

Voter Registration Transactions

	FY 2015 Actual	FY 2016 Budget	FY 2017 Gov. Rec.
New voters	16,705	16,000	18,000
Address changes	22,437	24,000	26,000
Name changes	5,702	7,000	7,000
Party changes	4,749	5,000	8,000

Cancelled Voter Registrations

	FY 2015 Actual	FY 2016 Budget	FY 2017 Gov. Rec.
Deceased	3,554	5,000	5,000
Verification programs	11,888	2,000	14,000
Moved out of State	6,230	3,500	7,000
Board actions	11	20	20
Not a citizen	0	20	20

Absentee Ballots

	FY 2013 Actual*	FY 2016 Budget	FY 2017 Gov. Rec.*
Total ballots issued	10,874	3,000	14,000

*Presidential election year.

KENT COUNTY ELECTIONS

70-03-01

MISSION

Kent County Elections provides first-class service to residents by registering them to vote and conducting fair and impartial elections.

KEY OBJECTIVES

- Provide quality service to all customers.
- Register Delaware residents who apply and are eligible to vote.

ELECTIONS

70-00-00

- Provide information to the public, candidates and political parties regarding election laws, rules, regulations and registration requirements.
- Remove ineligible voters from the list of registered voters.
- Conduct elections in an efficient and impartial manner as mandated by 14 and 15 Del. C.
- Enhance efficiency by streamlining operational procedures.

BACKGROUND AND ACCOMPLISHMENTS

During the past year, Kent County Elections met filing and voter registration deadlines in a timely and professional manner. The office assisted with six municipal elections. Three of the six Kent County municipalities are now using the Voter Registration system pursuant to 15 Del. C. § 7554(b). Two Kent County School Referenda and School Board Elections were conducted, with three of the five Kent County School Districts having elections. The office also performed many activities for voter education with the school districts and group functions, such as supplying voting machines, ballots, voter registrars, polling place information, absentee ballot information and promotional items to keep the public aware of the continuing changes in voting practices.

FUNDING

	FY 2015 ACTUAL	FY 2016 BUDGET	FY 2017 GOV. REC.
GF	1,214.9	217.0	217.0
ASF	51.2	--	--
TOTAL	1,266.1	217.0	217.0

POSITIONS

	FY 2015 ACTUAL	FY 2016 BUDGET	FY 2017 GOV. REC.
GF	8.0	--	--
ASF	--	--	--
NSF	--	--	--
TOTAL	8.0	--	--

ACTIVITIES

- Register voters.
- Maintain an accurate voter registration database.
- Plan upcoming elections.
- Conduct elections in accordance with state and federal laws.
- Educate staff and election officers.
- Produce printed materials and resources.
- Engage in public outreach and education initiatives.

- Maintain the election system infrastructure.
- Conduct elections for unions, student governments and other entities.

PERFORMANCE MEASURES

Voter Registration Transactions

	FY 2015 Actual	FY 2016 Budget	FY 2017 Gov. Rec.
New voters	7,439	7,811	8,202
Address changes	7,884	8,278	8,692
Name changes	2,310	2,426	2,547
Party changes	1,363	1,431	1,503

Cancelled Voter Registrations

	FY 2015 Actual	FY 2016 Budget	FY 2017 Gov. Rec.
Deceased	989	1,038	1,090
Verification programs	2,128	2,234	2,346
Moved out of State	736	773	811

Absentee Ballots

	FY 2013 Actual*	FY 2016 Budget	FY 2017 Gov. Rec.*
Total voted ballots	4,753	4,118	5,228

*Presidential election year.

SUSSEX COUNTY ELECTIONS

70-04-01

MISSION

Sussex County Elections serves the residents of Sussex County by registering voters and conducting primary, general, special and public school elections in accordance with state and federal laws.

KEY OBJECTIVES

- Provide prompt and courteous service to all customers.
- Conduct elections in an efficient and impartial manner, as mandated by 14 and 15 Del. C.
- Register all eligible permanent residents of the State of Delaware who submit a complete and accurate voter registration application.
- Provide mobile registration at scheduled events or at the request of organizations.
- Provide information to the public, candidates and political parties regarding election laws, rules, regulations and registration requirements.
- Educate the public about the use of electronic voting machines and the election process.

ELECTIONS

70-00-00

- Remove ineligible voters from the voting rolls in accordance with state and federal laws.
- Enhance productivity through the application of technology and redesign of tasks.

BACKGROUND AND ACCOMPLISHMENTS

Sussex County Elections continued to manage increasing numbers of new registration, change of address and name applications due to the Motor Voter Act. The act mandated DMV, DHSS and DOL to register eligible residents.

During Fiscal Year 2017, the office will provide for the set up and delivery of voting machines for at least six student government elections, six school district elections and referenda, 26 municipal elections and referenda in Sussex County, Correctional Officers Association of Delaware Election and the annual Delaware Electric Cooperative Board of Directors election.

FUNDING

	FY 2015 ACTUAL	FY 2016 BUDGET	FY 2017 GOV. REC.
GF	1,059.1	86.9	86.9
ASF	--	--	--
TOTAL	1,059.1	86.9	86.9

POSITIONS

	FY 2015 ACTUAL	FY 2016 BUDGET	FY 2017 GOV. REC.
GF	7.0	--	--
ASF	--	--	--
NSF	--	--	--
TOTAL	7.0	--	--

ACTIVITIES

- Register new voters by mail and mobile registration.
- Process applications received as a result of agency-based registration.
- Maintain voter registration files.
- Conduct school elections and referenda.
- Provide voting machines, training and support for municipal elections and referenda.
- Conduct the primary and general elections in Sussex County.
- Provide voter education.

PERFORMANCE MEASURES

Voter Registration Transactions

	FY 2015 Actual	FY 2016 Budget	FY 2017 Gov. Rec.
New voters	8,197	9,250	10,100
Address changes	11,941	12,500	13,500
Name changes	1,170	1,285	1,385
Party changes	1,571	1,850	1,950

Cancelled Voter Registrations

	FY 2015 Actual	FY 2016 Budget	FY 2017 Gov. Rec.
Deceased	1,589	1,695	1,195
Verification programs	2,494	0	2,512
Moved out of State	2,292	2,492	2,592
Board action	22	25	35

Absentee Ballots

	FY 2013 Actual*	FY 2016 Budget	FY 2017 Gov. Rec.*
Total voted ballots	7,402	3,496	8,400

*Presidential election year.