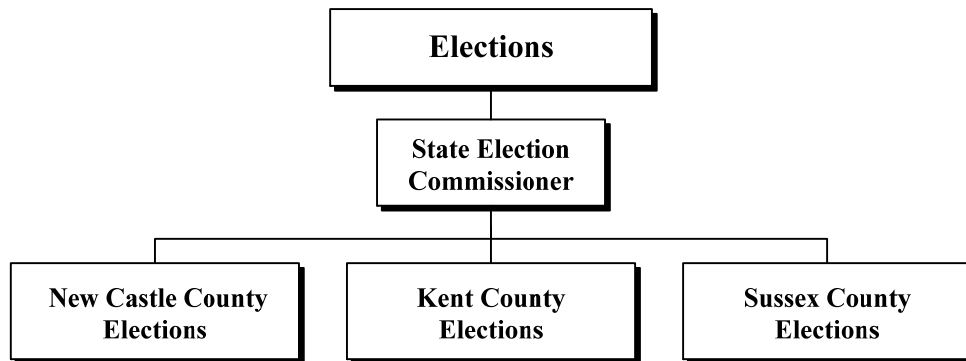
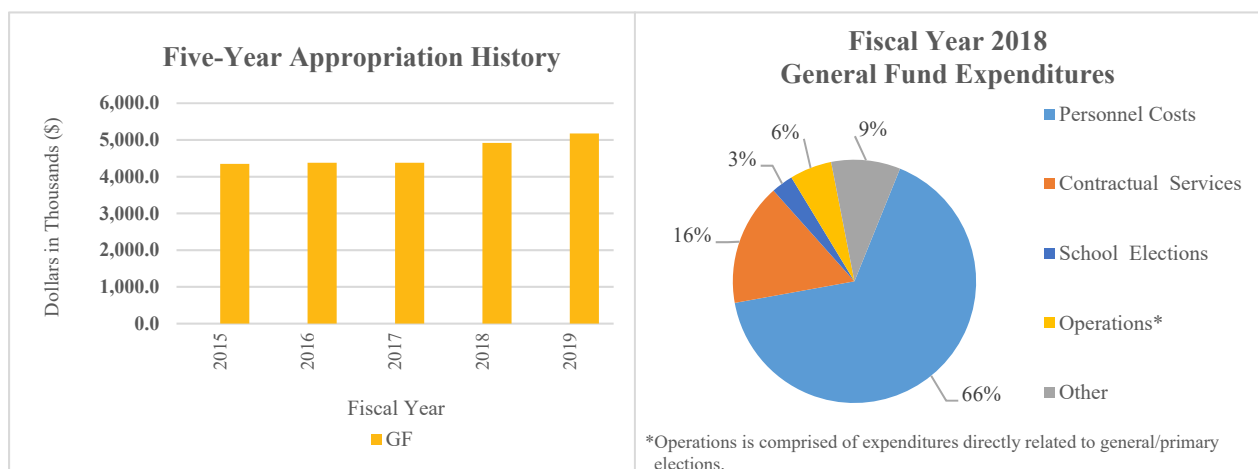


# Elections

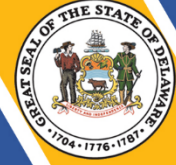


## At a Glance

- Ensure the standard administration of Delaware election laws;
- Conduct elections for Delaware residents from presidential primaries to school and municipal elections;
- Use technology to improve services to Delaware residents here and abroad;
- Register all eligible Delaware residents who submit a complete and accurate voter registration application and remove ineligible voters from the list of registered voters; and
- Educate the public regarding the elections process, and the use of the State's electronic voting machines, and Delaware's voter portal, [ivote.de.gov](http://ivote.de.gov).



# Elections



## Overview

The mission of the Department of Elections is to provide a standardized, secure and accurate election system for the residents of Delaware. The department provides residents with voter registration information and the structure needed to participate in elections, as well as access to campaign finance reports.

Each county has an election office that is responsible for facilitating primary, general, school, special and municipal elections within the county.

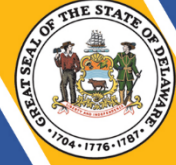
## On the Web

For more information, visit [elections.delaware.gov](https://elections.delaware.gov).

## Performance Measures

IPU	Performance Measure Name	Fiscal Year 2018 Actual	Fiscal Year 2019 Budget	Fiscal Year 2020 Governor's Recommended
70-01-01	<b>State Election Commissioner</b>			
	# of candidate committees	2,424	2,500	2,700
	# of requests for campaign finance assistance	4,600	4,750	5,000
70-02-01	<b>New Castle County Elections</b>			
	<b>Voter Registration Transactions</b>			
	New voters	12,604	14,000	24,000
	Address changes	22,896	24,000	36,000
	Name changes	10,582	6,000	10,000
	Party changes	3,844	5,000	12,000
	<b>Cancelled Voter Registrations</b>			
	Deceased	3,728	5,000	5,000
	Verification programs	69	14,000	15,000
	Moved out of State	3,552	7,000	12,000
	Board actions	28	20	20
	<b>Absentee Ballots</b>			
	Total ballots issued	3,000	12,050*	6,000*
	<i>*Election year.</i>			
	<b>School Elections</b>			
	# of referenda elections	0	10	10
	# of school board elections	4	5	5

# Elections



IPU	Performance Measure Name	Fiscal Year 2018 Actual	Fiscal Year 2019 Budget	Fiscal Year 2020 Governor's Recommended
70-03-01	<b>Kent County Elections</b>			
	<b>Voter Registration Transactions</b>			
	New voters	4,276	4,490	4,490
	Address changes	8,800	9,240	9,240
	Name changes	3,377	3,545	3,545
	Party changes	1,284	1,348	1,348
	<b>Cancelled Voter Registrations</b>			
	Deceased	1,293	1,293	1,293
	Verification programs	64	67	67
	Moved out of State	823	864	864
	<b>Absentee Ballots</b>			
	Total ballots issued	0	5,000*	6,000*
	<i>*Election year.</i>			
	<b>School Elections</b>			
	# of referenda elections	0	5	5
	# of school board elections	3	5	5
70-04-01	<b>Sussex County Elections</b>			
	<b>Voter Registration Transactions</b>			
	New voters	8,223	9,223	10,010
	Address changes	8,581	9,500	9,800
	Name changes	1,299	1,399	1,499
	Party changes	1,934	2,120	2,222
	<b>Cancelled Voter Registrations</b>			
	Deceased	1,653	1,850	1,875
	Verification programs	969	1,015	1,115
	Moved out of State	1,357	1,657	1,757
	Board action	12	15	16
	<b>Absentee Ballots</b>			
	Total ballots issued	46	9,700*	3,000*
	<i>*Election year.</i>			
	<b>School Elections</b>			
	# of referenda elections	2	3	4
	# of school board elections	3	6	6

**ELECTIONS  
DEPARTMENT SUMMARY**

70-00-00	POSITIONS				DOLLARS			
Appropriation Units	FY 2018 Actual	FY 2019 Budget	FY 2020 Request	FY 2020 Recommend	FY 2018 Actual	FY 2019 Budget	FY 2020 Request	FY 2020 Recommend
State Election Commissioner								
General Funds	42.0	42.0	42.0	42.0	3,884.0	4,169.1	6,318.3	5,522.9
Appropriated S/F					4.0			
Non-Appropriated S/F					136.1			
	42.0	42.0	42.0	42.0	4,024.1	4,169.1	6,318.3	5,522.9
New Castle County Elections								
General Funds					455.3	660.2	700.3	671.7
Appropriated S/F							763.0	
Non-Appropriated S/F								
					455.3	660.2	1,463.3	671.7
Kent County Elections								
General Funds					235.7	253.7	655.3	260.2
Appropriated S/F								
Non-Appropriated S/F								
					235.7	253.7	655.3	260.2
Sussex County Elections								
General Funds					73.9	91.3	321.2	96.5
Appropriated S/F								
Non-Appropriated S/F								
					73.9	91.3	321.2	96.5
TOTAL								
General Funds	42.0	42.0	42.0	42.0	4,648.9	5,174.3	7,995.1	6,551.3
Appropriated S/F					4.0		763.0	
Non-Appropriated S/F					136.1			
	42.0	42.0	42.0	42.0	4,789.0	5,174.3	8,758.1	6,551.3

70-00-00	POSITIONS				DOLLARS			
Appropriation Units	FY 2018 Actual	FY 2019 Budget	FY 2020 Request	FY 2020 Recommend	FY 2018 Actual	FY 2019 Budget	FY 2020 Request	FY 2020 Recommend
<b>OTHER AVAILABLE FUNDS - REGULAR OPERATIONS</b>								
General Funds					-0.1	1,970.3		
Special Funds								
SUBTOTAL					-0.1	1,970.3		
<b>TOTAL DEPARTMENT - REGULAR OPERATIONS</b>								
General Funds					4,648.8	7,144.6	7,995.1	6,551.3
Special Funds					140.1		763.0	
TOTAL					4,788.9	7,144.6	8,758.1	6,551.3
<b>TOTAL DEPARTMENT</b>								
<b>FIRST STATE IMPROVEMENT FUND - SPECIAL FUNDS</b>								
<b>CAPITAL IMPROVEMENTS - SPECIAL FUNDS</b>								
<b>GRAND TOTAL</b>								
General Funds					4,648.8	7,144.6	7,995.1	6,551.3
Special Funds					140.1		763.0	
GRAND TOTAL					4,788.9	7,144.6	8,758.1	6,551.3
(Reverted)					10.3			
(Encumbering)					172.9			
(Continuing)					1,797.5			

**ELECTIONS**  
**STATE ELECTION COMMISSIONER**  
**STATE ELECTION COMMISSIONER**  
**INTERNAL PROGRAM UNIT SUMMARY**

<b>70-01-01</b>								
<b>Lines</b>	<b>FY 2018 Actual</b>	<b>FY 2019 Budget</b>	<b>FY 2020 Request</b>	<b>FY 2020 Base</b>	<b>Inflation &amp; Volume Adjustment</b>	<b>Structural Changes</b>	<b>Enhance- ments</b>	<b>FY 2020 Recommend</b>
<b>Personnel Costs</b>								
General Funds	3,070.7	3,406.1	3,537.7	3,477.7				3,477.7
Appropriated S/F								
Non-Appropriated S/F								
	<u>3,070.7</u>	<u>3,406.1</u>	<u>3,537.7</u>	<u>3,477.7</u>				<u>3,477.7</u>
<b>Travel</b>								
General Funds	3.3	0.1	0.1	0.1				0.1
Appropriated S/F								
Non-Appropriated S/F	<u>2.6</u>							
	5.9	0.1	0.1	0.1				0.1
<b>Contractual Services</b>								
General Funds	226.0	446.1	451.5	446.0	5.4			451.4
Appropriated S/F								
Non-Appropriated S/F	<u>133.4</u>							
	359.4	446.1	451.5	446.0	5.4			451.4
<b>Energy</b>								
General Funds	6.6	9.7	9.7	9.7				9.7
Appropriated S/F								
Non-Appropriated S/F	<u>6.6</u>							
	6.6	9.7	9.7	9.7				9.7
<b>Supplies and Materials</b>								
General Funds	6.6	9.4	9.4	9.4				9.4
Appropriated S/F								
Non-Appropriated S/F	<u>0.1</u>							
	6.7	9.4	9.4	9.4				9.4
<b>One-Time</b>								
General Funds	76.5							
Appropriated S/F								
Non-Appropriated S/F	<u>76.5</u>							
<b>Operations</b>								
General Funds	232.5							
Appropriated S/F	4.0							
Non-Appropriated S/F	<u>236.5</u>							
<b>Voter Purging</b>								
General Funds	15.0	15.0	15.0	15.0				15.0
Appropriated S/F								
Non-Appropriated S/F	<u>15.0</u>	<u>15.0</u>	<u>15.0</u>	<u>15.0</u>				<u>15.0</u>
<b>Technology Development</b>								
General Funds	20.0	20.0	20.0	20.0				20.0
Appropriated S/F								
Non-Appropriated S/F	<u>20.0</u>	<u>20.0</u>	<u>20.0</u>	<u>20.0</u>				<u>20.0</u>

**ELECTIONS**  
**STATE ELECTION COMMISSIONER**  
**STATE ELECTION COMMISSIONER**  
**INTERNAL PROGRAM UNIT SUMMARY**

<b>70-01-01</b>								
<b>Lines</b>	<b>FY 2018 Actual</b>	<b>FY 2019 Budget</b>	<b>FY 2020 Request</b>	<b>FY 2020 Base</b>	<b>Inflation &amp; Volume Adjustment</b>	<b>Structural Changes</b>	<b>Enhance- ments</b>	<b>FY 2020 Recommend</b>
<b>Voting Machines</b>								
General Funds	226.8	262.7	2,164.9	262.7			1,276.9	1,539.6
Appropriated S/F								
Non-Appropriated S/F								
	<u>226.8</u>	<u>262.7</u>	<u>2,164.9</u>	<u>262.7</u>			<u>1,276.9</u>	<u>1,539.6</u>
<b>Presidential Primary</b>								
General Funds			110.0					
Appropriated S/F								
Non-Appropriated S/F								
			<u>110.0</u>					
<b>TOTAL</b>								
General Funds	3,884.0	4,169.1	6,318.3	4,240.6	5.4		1,276.9	5,522.9
Appropriated S/F	4.0							
Non-Appropriated S/F	<u>136.1</u>							
	<u>4,024.1</u>	<u>4,169.1</u>	<u>6,318.3</u>	<u>4,240.6</u>	<u>5.4</u>		<u>1,276.9</u>	<u>5,522.9</u>
<b>IPU REVENUES</b>								
General Funds		29.0	29.0	29.0				29.0
Appropriated S/F								
Non-Appropriated S/F	<u>5.3</u>							
	<u>5.3</u>	<u>29.0</u>	<u>29.0</u>	<u>29.0</u>				<u>29.0</u>
<b>POSITIONS</b>								
General Funds	42.0	42.0	42.0	42.0				42.0
Appropriated S/F								
Non-Appropriated S/F	<u>42.0</u>	<u>42.0</u>	<u>42.0</u>	<u>42.0</u>				<u>42.0</u>

**BASE, INFLATION, STRUCTURAL CHANGES, ENHANCEMENTS AND ONE-TIME ITEMS**

\*Base adjustments include (\$0.1) in Contractual Services to reflect a fleet rate reduction.

\*Recommend inflation and volume adjustment of \$5.4 in Contractual Services for office space lease escalator costs.

\*Recommend enhancement of \$1,276.9 in Voting Machines for license and maintenance support for the new voting system. Do not recommend additional enhancement of \$60.0 in Personnel Costs.

\*Recommend one-time funding of \$625.3 in Voting Machines in the Fiscal Year 2020 Supplemental One-Time Appropriations Act for final acceptance payment of the new voting system; and \$110.0 in Primary and General Election in the Fiscal Year 2020 Supplemental One-Time Appropriations Act for the 2020 Presidential Primary.

**ELECTIONS**  
**NEW CASTLE COUNTY ELECTIONS**  
**NEW CASTLE COUNTY ELECTIONS**  
**INTERNAL PROGRAM UNIT SUMMARY**

<b>70-02-01</b>								
<b>Lines</b>	<b>FY 2018 Actual</b>	<b>FY 2019 Budget</b>	<b>FY 2020 Request</b>	<b>FY 2020 Base</b>	<b>Inflation &amp; Volume Adjustment</b>	<b>Structural Changes</b>	<b>Enhance- ments</b>	<b>FY 2020 Recommend</b>
<b>Travel</b>								
General Funds	4.4	6.0	6.0	6.0				<b>6.0</b>
Appropriated S/F								
Non-Appropriated S/F								
	<u>4.4</u>	<u>6.0</u>	<u>6.0</u>	<u>6.0</u>				<u><b>6.0</b></u>
<b>Contractual Services</b>								
General Funds	295.8	452.0	463.6	451.9	11.6			<b>463.5</b>
Appropriated S/F								
Non-Appropriated S/F								
	<u>295.8</u>	<u>452.0</u>	<u>463.6</u>	<u>451.9</u>	<u>11.6</u>			<u><b>463.5</b></u>
<b>Energy</b>								
General Funds	31.9	36.1	36.1	36.1				<b>36.1</b>
Appropriated S/F								
Non-Appropriated S/F								
	<u>31.9</u>	<u>36.1</u>	<u>36.1</u>	<u>36.1</u>				<u><b>36.1</b></u>
<b>Supplies and Materials</b>								
General Funds	4.6	7.7	7.7	7.7				<b>7.7</b>
Appropriated S/F								
Non-Appropriated S/F								
	<u>4.6</u>	<u>7.7</u>	<u>7.7</u>	<u>7.7</u>				<u><b>7.7</b></u>
<b>Operations</b>								
General Funds	27.2							
Appropriated S/F								
Non-Appropriated S/F								
	<u>27.2</u>							
<b>School Elections</b>								
General Funds	91.4	158.4	186.9	158.4				<b>158.4</b>
Appropriated S/F								
Non-Appropriated S/F								
	<u>91.4</u>	<u>158.4</u>	<u>186.9</u>	<u>158.4</u>				<u><b>158.4</b></u>
<b>Presidential Primary</b>								
General Funds								
Appropriated S/F			763.0					
Non-Appropriated S/F								
			<u>763.0</u>					
	<u></u>	<u></u>	<u></u>	<u></u>	<u></u>	<u></u>	<u></u>	<u></u>
<b>TOTAL</b>								
General Funds	455.3	660.2	700.3	660.1	11.6			<b>671.7</b>
Appropriated S/F			763.0					
Non-Appropriated S/F								
	<u>455.3</u>	<u>660.2</u>	<u>1,463.3</u>	<u>660.1</u>	<u>11.6</u>			<u><b>671.7</b></u>



**ELECTIONS**  
**NEW CASTLE COUNTY ELECTIONS**  
**NEW CASTLE COUNTY ELECTIONS**  
**INTERNAL PROGRAM UNIT SUMMARY**

70-02-01								
Lines	FY 2018 Actual	FY 2019 Budget	FY 2020 Request	FY 2020 Base	Inflation & Volume Adjustment	Structural Changes	Enhance- ments	FY 2020 Recommend

**IPU REVENUES**

General Funds  
Appropriated S/F  
Non-Appropriated S/F

**POSITIONS**

General Funds  
Appropriated S/F  
Non-Appropriated S/F

**BASE, INFLATION, STRUCTURAL CHANGES, ENHANCEMENTS AND ONE-TIME ITEMS**

\*Base adjustments include (\$0.1) in Contractual Services to reflect a fleet rate reduction.

\*Recommend inflation and volume adjustment of \$11.6 in Contractual Services for warehouse lease escalator costs.

\*Do not recommend enhancement of \$28.5 in School Elections.

\*Recommend one-time funding of \$763.0 in Primary and General Election in the Fiscal Year 2020 Supplemental One-Time Appropriations Act for the 2020 Presidential Primary.

**ELECTIONS**  
**KENT COUNTY ELECTIONS**  
**KENT COUNTY ELECTIONS**  
**INTERNAL PROGRAM UNIT SUMMARY**

<b>70-03-01</b>								
<b>Lines</b>	<b>FY 2018 Actual</b>	<b>FY 2019 Budget</b>	<b>FY 2020 Request</b>	<b>FY 2020 Base</b>	<b>Inflation &amp; Volume Adjustment</b>	<b>Structural Changes</b>	<b>Enhance- ments</b>	<b>FY 2020 Recommend</b>
<b>Contractual Services</b>								
General Funds	197.7	200.4	203.8	200.4	3.4			<b>203.8</b>
Appropriated S/F								
Non-Appropriated S/F								
	<u>197.7</u>	<u>200.4</u>	<u>203.8</u>	<u>200.4</u>	<u>3.4</u>			<u><b>203.8</b></u>
<b>Energy</b>								
General Funds	14.0	12.0	15.1	12.0	3.1			<b>15.1</b>
Appropriated S/F								
Non-Appropriated S/F								
	<u>14.0</u>	<u>12.0</u>	<u>15.1</u>	<u>12.0</u>	<u>3.1</u>			<u><b>15.1</b></u>
<b>Supplies and Materials</b>								
General Funds	3.4	3.5	3.5	3.5				<b>3.5</b>
Appropriated S/F								
Non-Appropriated S/F								
	<u>3.4</u>	<u>3.5</u>	<u>3.5</u>	<u>3.5</u>				<u><b>3.5</b></u>
<b>Operations</b>								
General Funds	1.2							
Appropriated S/F								
Non-Appropriated S/F								
	<u>1.2</u>							
<b>School Elections</b>								
General Funds	19.4	37.8	43.7	37.8				<b>37.8</b>
Appropriated S/F								
Non-Appropriated S/F								
	<u>19.4</u>	<u>37.8</u>	<u>43.7</u>	<u>37.8</u>				<u><b>37.8</b></u>
<b>Presidential Primary</b>								
General Funds			389.2					
Appropriated S/F								
Non-Appropriated S/F								
			<u>389.2</u>					
	<u><u>          </u></u>	<u><u>          </u></u>	<u><u>          </u></u>	<u><u>          </u></u>	<u><u>          </u></u>	<u><u>          </u></u>	<u><u>          </u></u>	<u><u>          </u></u>
<b>TOTAL</b>								
General Funds	235.7	253.7	655.3	253.7	6.5			<b>260.2</b>
Appropriated S/F								
Non-Appropriated S/F								
	<u>235.7</u>	<u>253.7</u>	<u>655.3</u>	<u>253.7</u>	<u>6.5</u>			<u><b>260.2</b></u>
<b>IPU REVENUES</b>								
General Funds	0.4							
Appropriated S/F								
Non-Appropriated S/F								
	<u>0.4</u>							

**ELECTIONS  
KENT COUNTY ELECTIONS  
KENT COUNTY ELECTIONS  
INTERNAL PROGRAM UNIT SUMMARY**

<b>70-03-01</b>					<b>Inflation</b>			
<b>Lines</b>	<b>FY 2018 Actual</b>	<b>FY 2019 Budget</b>	<b>FY 2020 Request</b>	<b>FY 2020 Base</b>	<b>&amp; Volume Adjustment</b>	<b>Structural Changes</b>	<b>Enhance- ments</b>	<b>FY 2020 Recommend</b>

**POSITIONS**

General Funds

Appropriated S/F

Non-Appropriated S/F

**BASE, INFLATION, STRUCTURAL CHANGES, ENHANCEMENTS AND ONE-TIME ITEMS**

\*Recommend inflation and volume adjustments of \$3.4 in Contractual Services for office space lease escalator costs; and \$3.1 in Energy for office space utility costs.

\*Do not recommend enhancement of \$5.9 in School Elections.

\*Recommend one-time funding of \$389.2 in Primary and General Election in the Fiscal Year 2020 Supplemental One-Time Appropriations Act for the 2020 Presidential Primary.

**ELECTIONS**  
**SUSSEX COUNTY ELECTIONS**  
**SUSSEX COUNTY ELECTIONS**  
**INTERNAL PROGRAM UNIT SUMMARY**

<b>70-04-01</b>								
<b>Lines</b>	<b>FY 2018 Actual</b>	<b>FY 2019 Budget</b>	<b>FY 2020 Request</b>	<b>FY 2020 Base</b>	<b>Inflation &amp; Volume Adjustment</b>	<b>Structural Changes</b>	<b>Enhance- ments</b>	<b>FY 2020 Recommend</b>
<b>Travel</b>								
General Funds	1.4	2.2	2.2	2.2				2.2
Appropriated S/F								
Non-Appropriated S/F								
	<u>1.4</u>	<u>2.2</u>	<u>2.2</u>	<u>2.2</u>				<u>2.2</u>
<b>Contractual Services</b>								
General Funds	35.6	35.6	40.8	35.6			5.2	40.8
Appropriated S/F								
Non-Appropriated S/F								
	<u>35.6</u>	<u>35.6</u>	<u>40.8</u>	<u>35.6</u>			<u>5.2</u>	<u>40.8</u>
<b>Supplies and Materials</b>								
General Funds	12.5	12.7	12.7	12.7				12.7
Appropriated S/F								
Non-Appropriated S/F								
	<u>12.5</u>	<u>12.7</u>	<u>12.7</u>	<u>12.7</u>				<u>12.7</u>
<b>Capital Outlay</b>								
General Funds		2.0	2.0	2.0				2.0
Appropriated S/F								
Non-Appropriated S/F								
		<u>2.0</u>	<u>2.0</u>	<u>2.0</u>				<u>2.0</u>
<b>School Elections</b>								
General Funds	24.4	38.8	45.5	38.8				38.8
Appropriated S/F								
Non-Appropriated S/F								
	<u>24.4</u>	<u>38.8</u>	<u>45.5</u>	<u>38.8</u>				<u>38.8</u>
<b>Presidential Primary</b>								
General Funds			218.0					
Appropriated S/F								
Non-Appropriated S/F								
			<u>218.0</u>					
<b>TOTAL</b>								
General Funds	73.9	91.3	321.2	91.3			5.2	96.5
Appropriated S/F								
Non-Appropriated S/F								
	<u>73.9</u>	<u>91.3</u>	<u>321.2</u>	<u>91.3</u>			<u>5.2</u>	<u>96.5</u>
<b>IPU REVENUES</b>								
General Funds	1.1	2.0	2.0	2.0				2.0
Appropriated S/F								
Non-Appropriated S/F								
	<u>1.1</u>	<u>2.0</u>	<u>2.0</u>	<u>2.0</u>				<u>2.0</u>

ELECTIONS  
SUSSEX COUNTY ELECTIONS  
SUSSEX COUNTY ELECTIONS  
INTERNAL PROGRAM UNIT SUMMARY

70-04-01					Inflation			
Lines	FY 2018 Actual	FY 2019 Budget	FY 2020 Request	FY 2020 Base	& Volume Adjustment	Structural Changes	Enhance- ments	FY 2020 Recommend

**POSITIONS**

General Funds

Appropriated S/F

Non-Appropriated S/F

**BASE, INFLATION, STRUCTURAL CHANGES, ENHANCEMENTS AND ONE-TIME ITEMS**

\*Recommend enhancement of \$5.2 in Contractual Services for an absentee ballot envelope printer lease. Do not recommend additional enhancement of \$6.7 in School Elections.

\*Recommend one-time funding of \$218.0 in Primary and General Election in the Fiscal Year 2020 Supplemental One-Time Appropriations Act for the 2020 Presidential Primary.