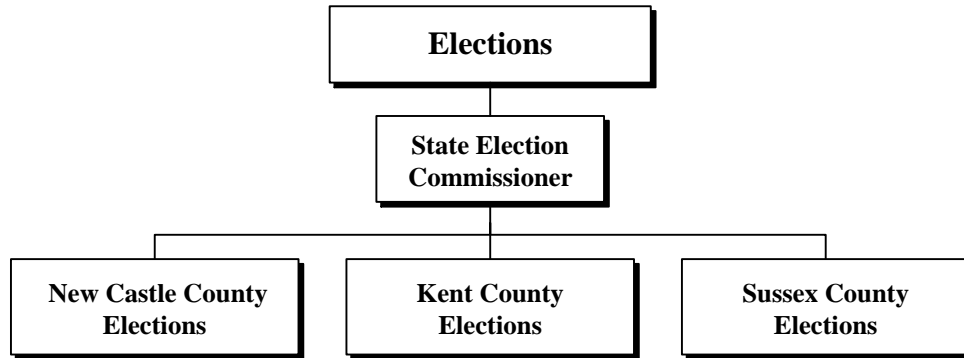
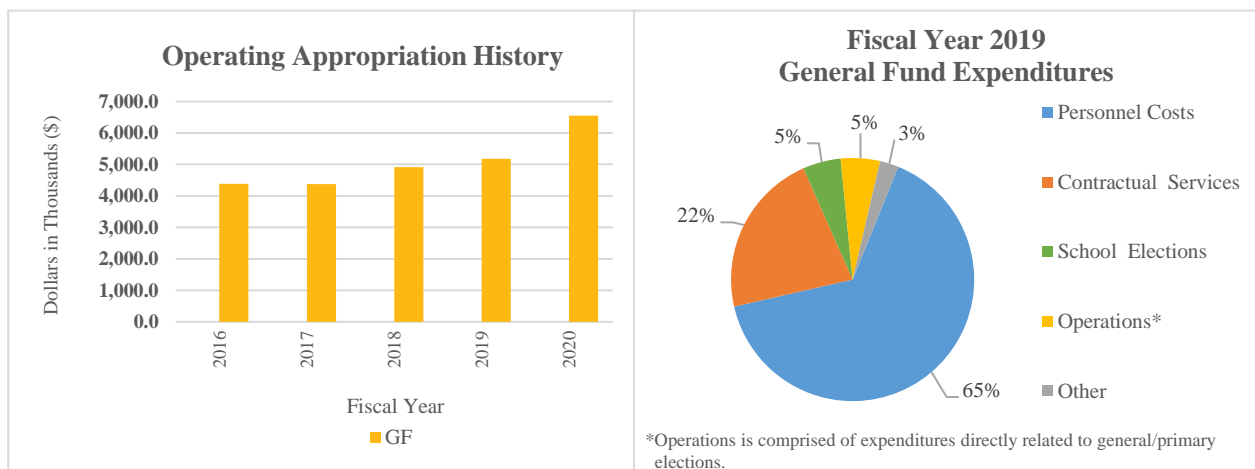


# Elections

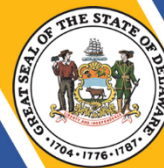


## At a Glance

- Ensure the standard administration of Delaware election laws;
- Conduct all the elections in the State, including School Board and Referenda, Municipal, Special, Presidential and State Primary, and General Elections;
- Use technology to improve services to Delaware residents here and abroad;
- Register all eligible Delaware residents who submit a complete and accurate voter registration application and remove ineligible voters from the list of registered voters; and
- Educate the public regarding the elections process, and the use of the State’s voting equipment, and Delaware’s voter portal, [ivote.de.gov](http://ivote.de.gov).



# Elections



## Overview

The mission of the Department of Elections is to provide a standardized, transparent, secure and accurate election system for the residents of Delaware. The department provides voter registration services to residents, including voting (polling locations and absentee ballot options), campaign finance reports, and other elections information.

Each county has an election office that is responsible for facilitating primary, general, school, special and municipal elections within the county.

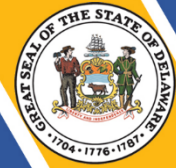
## On the Web

For more information, visit [elections.delaware.gov](http://elections.delaware.gov).

## Performance Measures

IPU	Performance Measure Name	Fiscal Year 2019 Actual	Fiscal Year 2020 Budget	Fiscal Year 2021 Governor's Recommended
<b>70-01-01</b>	<b><i>State Election Commissioner</i></b>			
	# of candidate committees	2,500	2,650	2,750
	# of requests for campaign finance assistance	4,750	5,000	5,250
<b>70-02-01</b>	<b><i>New Castle County Elections</i></b>			
	<b>Voter Registration Transactions</b>			
	New voters	17,436	24,000	22,000
	Address changes	27,584	36,000	32,000
	Name changes	10,511	10,000	11,000
	Party changes	8,324	12,000	11,000
	<b>Cancelled Voter Registrations</b>			
	Deceased	3,805	5,000	5,000
	Verification programs	450	15,000	1,000
	Moved out of State	6,165	12,000	8,000
	Board actions	67	20	100
	<b>Absentee Ballots</b>			
	Total ballots issued	14,528*	6,000*	21,000
	<i>*Election year.</i>			
	<b>School Elections</b>			
# of referenda elections	1	10	5	
# of school board elections	4	5	5	

# Elections



IPU	Performance Measure Name	Fiscal Year 2019 Actual	Fiscal Year 2020 Budget	Fiscal Year 2021 Governor's Recommended
<b>70-03-01</b>	<b><i>Kent County Elections</i></b>			
	<b>Voter Registration Transactions</b>			
	New voters	8,280	8,694	9,129
	Address changes	9,660	10,143	10,650
	Name changes	3,861	4,054	4,257
	Party changes	2,817	2,958	3,106
	<b>Cancelled Voter Registrations</b>			
	Deceased	1,271	1,335	1,402
	Verification programs	2,587	2,716	2,852
	Moved out of State	830	872	916
	<b>Absentee Ballots</b>			
	Total ballots issued	0*	1,089*	5,800
	<i>*Election year.</i>			
	<b>School Elections</b>			
	# of referenda elections	1	5	5
# of school board elections	3	5	5	
<b>70-04-01</b>	<b><i>Sussex County Elections</i></b>			
	<b>Voter Registration Transactions</b>			
	New voters	10,138	11,000	11,000
	Address changes	10,144	11,000	10,000
	Name changes	1,433	1,500	1,600
	Party changes	3,547	4,500	5,000
	<b>Cancelled Voter Registrations</b>			
	Deceased	2,047	2,500	3,000
	Verification programs	5,238	5,500	6,000
	Moved out of State	3,669	4,000	5,000
	Board action	27	20	20
	<b>Absentee Ballots</b>			
	Total ballots issued	8,511*	2,000*	10,000
	<i>*Election year.</i>			
	<b>School Elections</b>			
# of referenda elections	4	5	5	
# of school board elections	5	4	4	

**ELECTIONS  
DEPARTMENT SUMMARY**

70-00-00 Appropriation Units	POSITIONS				DOLLARS			
	FY 2019 Actual	FY 2020 Budget	FY 2021 Request	FY 2021 Recommend	FY 2019 Actual	FY 2020 Budget	FY 2021 Request	FY 2021 Recommend
<b>State Election Commissioner</b>								
General Funds	42.0	42.0	42.0	<b>42.0</b>	4,195.5	5,522.9	6,032.2	<b>5,573.5</b>
Appropriated S/F								
Non-Appropriated S/F					3,000.3			
	<u>42.0</u>	<u>42.0</u>	<u>42.0</u>	<u><b>42.0</b></u>	<u>7,195.8</u>	<u>5,522.9</u>	<u>6,032.2</u>	<u><b>5,573.5</b></u>
<b>New Castle County Elections</b>								
General Funds					731.8	671.7	2,686.6	<b>683.7</b>
Appropriated S/F								
Non-Appropriated S/F								
					<u>731.8</u>	<u>671.7</u>	<u>2,686.6</u>	<u><b>683.7</b></u>
<b>Kent County Elections</b>								
General Funds					261.4	260.2	892.0	<b>269.2</b>
Appropriated S/F								
Non-Appropriated S/F								
					<u>261.4</u>	<u>260.2</u>	<u>892.0</u>	<u><b>269.2</b></u>
<b>Sussex County Elections</b>								
General Funds					102.4	96.5	707.6	<b>110.3</b>
Appropriated S/F								
Non-Appropriated S/F								
					<u>102.4</u>	<u>96.5</u>	<u>707.6</u>	<u><b>110.3</b></u>
<b>TOTAL</b>								
General Funds	42.0	42.0	42.0	<b>42.0</b>	5,291.1	6,551.3	10,318.4	<b>6,636.7</b>
Appropriated S/F								
Non-Appropriated S/F					3,000.3			
	<u>42.0</u>	<u>42.0</u>	<u>42.0</u>	<u><b>42.0</b></u>	<u>8,291.4</u>	<u>6,551.3</u>	<u>10,318.4</u>	<u><b>6,636.7</b></u>

**ELECTIONS  
DEPARTMENT SUMMARY**

<b>70-00-00</b>	<b>POSITIONS</b>				<b>DOLLARS</b>			
<b>Appropriation Units</b>	<b>FY 2019 Actual</b>	<b>FY 2020 Budget</b>	<b>FY 2021 Request</b>	<b>FY 2021 Recommend</b>	<b>FY 2019 Actual</b>	<b>FY 2020 Budget</b>	<b>FY 2021 Request</b>	<b>FY 2021 Recommend</b>
<b>OTHER AVAILABLE FUNDS - REGULAR OPERATIONS</b>								
General Funds					13,079.7	10,295.7		
Special Funds								
SUBTOTAL					13,079.7	10,295.7		
<b>TOTAL DEPARTMENT - REGULAR OPERATIONS</b>								
General Funds					18,370.8	16,847.0	10,318.4	<b>6,636.7</b>
Special Funds					3,000.3			
TOTAL					21,371.1	16,847.0	10,318.4	<b>6,636.7</b>
<b>TOTAL DEPARTMENT</b>								
<b>FIRST STATE IMPROVEMENT FUND - SPECIAL FUNDS</b>								
<b>CAPITAL IMPROVEMENTS - SPECIAL FUNDS</b>								
<hr/>								
<b>GRAND TOTAL</b>								
General Funds					18,370.8	16,847.0	10,318.4	<b>6,636.7</b>
Special Funds					3,000.3			
GRAND TOTAL					21,371.1	16,847.0	10,318.4	<b>6,636.7</b>
					(Reverted) 38.6			
					(Encumbering) 38.6			
					(Continuing) 10,257.1			

**ELECTIONS**  
**STATE ELECTION COMMISSIONER**  
**STATE ELECTION COMMISSIONER**  
**INTERNAL PROGRAM UNIT SUMMARY**

<b>70-01-01</b>								
<b>Lines</b>	<b>FY 2019 Actual</b>	<b>FY 2020 Budget</b>	<b>FY 2021 Request</b>	<b>FY 2021 Base</b>	<b>Inflation &amp; Volume Adjustment</b>	<b>Structural Changes</b>	<b>Enhance- ments</b>	<b>FY 2021 Recommend</b>
<b>Personnel Costs</b>								
General Funds	3,284.5	3,477.7	3,528.3	3,528.3				<b>3,528.3</b>
Appropriated S/F								
Non-Appropriated S/F								
	<u>3,284.5</u>	<u>3,477.7</u>	<u>3,528.3</u>	<u>3,528.3</u>				<u><b>3,528.3</b></u>
<b>Travel</b>								
General Funds	0.6	0.1	0.1	0.1				<b>0.1</b>
Appropriated S/F								
Non-Appropriated S/F	0.3							
	<u>0.9</u>	<u>0.1</u>	<u>0.1</u>	<u>0.1</u>				<u><b>0.1</b></u>
<b>Contractual Services</b>								
General Funds	577.2	451.4	451.4	451.4				<b>451.4</b>
Appropriated S/F								
Non-Appropriated S/F	3,000.0							
	<u>3,577.2</u>	<u>451.4</u>	<u>451.4</u>	<u>451.4</u>				<u><b>451.4</b></u>
<b>Energy</b>								
General Funds	7.2	9.7	9.7	9.7				<b>9.7</b>
Appropriated S/F								
Non-Appropriated S/F								
	<u>7.2</u>	<u>9.7</u>	<u>9.7</u>	<u>9.7</u>				<u><b>9.7</b></u>
<b>Supplies and Materials</b>								
General Funds	9.8	9.4	9.4	9.4				<b>9.4</b>
Appropriated S/F								
Non-Appropriated S/F								
	<u>9.8</u>	<u>9.4</u>	<u>9.4</u>	<u>9.4</u>				<u><b>9.4</b></u>
<b>Operations</b>								
General Funds	18.5							
Appropriated S/F								
Non-Appropriated S/F								
	<u>18.5</u>							
<b>Voter Purging</b>								
General Funds	15.0	15.0	15.0	15.0				<b>15.0</b>
Appropriated S/F								
Non-Appropriated S/F								
	<u>15.0</u>	<u>15.0</u>	<u>15.0</u>	<u>15.0</u>				<u><b>15.0</b></u>
<b>Technology Development</b>								
General Funds	20.0	20.0	20.0	20.0				<b>20.0</b>
Appropriated S/F								
Non-Appropriated S/F								
	<u>20.0</u>	<u>20.0</u>	<u>20.0</u>	<u>20.0</u>				<u><b>20.0</b></u>
<b>Voting Machines</b>								
General Funds	262.7	1,539.6	1,539.6	1,539.6				<b>1,539.6</b>
Appropriated S/F								
Non-Appropriated S/F								
	<u>262.7</u>	<u>1,539.6</u>	<u>1,539.6</u>	<u>1,539.6</u>				<u><b>1,539.6</b></u>

**ELECTIONS  
STATE ELECTION COMMISSIONER  
STATE ELECTION COMMISSIONER  
INTERNAL PROGRAM UNIT SUMMARY**

70-01-01					Inflation & Volume Adjustment	Structural Changes	Enhance- ments	FY 2021 Recommend
Lines	FY 2019 Actual	FY 2020 Budget	FY 2021 Request	FY 2021 Base				
<b>Primary and General Election</b>								
General Funds			458.7					
Appropriated S/F								
Non-Appropriated S/F			458.7					
			458.7					
<b>TOTAL</b>								
General Funds	4,195.5	5,522.9	6,032.2	5,573.5				5,573.5
Appropriated S/F								
Non-Appropriated S/F	3,000.3							
	7,195.8	5,522.9	6,032.2	5,573.5				5,573.5
<b>IPU REVENUES</b>								
General Funds		29.0	29.0	29.0				29.0
Appropriated S/F								
Non-Appropriated S/F	3,006.6							
	3,006.6	29.0	29.0	29.0				29.0
<b>POSITIONS</b>								
General Funds	42.0	42.0	42.0	42.0				42.0
Appropriated S/F								
Non-Appropriated S/F								
	42.0	42.0	42.0	42.0				42.0

**BASE, INFLATION, STRUCTURAL CHANGES, ENHANCEMENTS AND ONE-TIME ITEMS**

\*Recommend one-time funding of \$458.7 in Primary and General Election in the Fiscal Year 2021 Supplemental One-Time Appropriations Act for the 2020 Primary and General Elections.

**ELECTIONS  
NEW CASTLE COUNTY ELECTIONS  
NEW CASTLE COUNTY ELECTIONS  
INTERNAL PROGRAM UNIT SUMMARY**

70-02-01								
Lines	FY 2019 Actual	FY 2020 Budget	FY 2021 Request	FY 2021 Base	Inflation & Volume Adjustment	Structural Changes	Enhance- ments	FY 2021 Recommend
<b>Travel</b>								
General Funds	5.7	6.0	6.0	6.0				6.0
Appropriated S/F								
Non-Appropriated S/F								
	5.7	6.0	6.0	6.0				6.0
<b>Contractual Services</b>								
General Funds	445.3	463.5	475.5	463.5	12.0			475.5
Appropriated S/F								
Non-Appropriated S/F								
	445.3	463.5	475.5	463.5	12.0			475.5
<b>Energy</b>								
General Funds	35.3	36.1	36.1	36.1				36.1
Appropriated S/F								
Non-Appropriated S/F								
	35.3	36.1	36.1	36.1				36.1
<b>Supplies and Materials</b>								
General Funds	7.2	7.7	7.7	7.7				7.7
Appropriated S/F								
Non-Appropriated S/F								
	7.2	7.7	7.7	7.7				7.7
<b>Operations</b>								
General Funds	3.7							
Appropriated S/F								
Non-Appropriated S/F								
	3.7							
<b>School Elections</b>								
General Funds	234.6	158.4	158.4	158.4				158.4
Appropriated S/F								
Non-Appropriated S/F								
	234.6	158.4	158.4	158.4				158.4
<b>Primary and General Election</b>								
General Funds			2,002.9					
Appropriated S/F								
Non-Appropriated S/F								
			2,002.9					
<b>TOTAL</b>								
General Funds	731.8	671.7	2,686.6	671.7	12.0			683.7
Appropriated S/F								
Non-Appropriated S/F								
	731.8	671.7	2,686.6	671.7	12.0			683.7



ELECTIONS  
 NEW CASTLE COUNTY ELECTIONS  
 NEW CASTLE COUNTY ELECTIONS  
 INTERNAL PROGRAM UNIT SUMMARY

70-02-01					Inflation			
Lines	FY 2019 Actual	FY 2020 Budget	FY 2021 Request	FY 2021 Base	& Volume Adjustment	Structural Changes	Enhance- ments	FY 2021 Recommend

**IPU REVENUES**

- General Funds
- Appropriated S/F
- Non-Appropriated S/F

**POSITIONS**

- General Funds
- Appropriated S/F
- Non-Appropriated S/F

**BASE, INFLATION, STRUCTURAL CHANGES, ENHANCEMENTS AND ONE-TIME ITEMS**

\*Recommend inflation and volume adjustment of \$12.0 in Contractual Services for lease obligations.

\*Recommend one-time funding of \$2,002.9 in Primary and General Election in the Fiscal Year 2021 Supplemental One-Time Appropriations Act for the 2020 Primary and General Elections.

**ELECTIONS  
KENT COUNTY ELECTIONS  
KENT COUNTY ELECTIONS  
INTERNAL PROGRAM UNIT SUMMARY**

<b>70-03-01</b>					<b>Inflation &amp; Volume Adjustment</b>	<b>Structural Changes</b>	<b>Enhance- ments</b>	<b>FY 2021 Recommend</b>
<b>Lines</b>	<b>FY 2019 Actual</b>	<b>FY 2020 Budget</b>	<b>FY 2021 Request</b>	<b>FY 2021 Base</b>				
<b>Contractual Services</b>								
General Funds	198.8	203.8	212.8	203.8	3.5		5.5	<b>212.8</b>
Appropriated S/F								
Non-Appropriated S/F								
	<u>198.8</u>	<u>203.8</u>	<u>212.8</u>	<u>203.8</u>	<u>3.5</u>		<u>5.5</u>	<u><b>212.8</b></u>
<b>Energy</b>								
General Funds	10.0	15.1	15.1	15.1				<b>15.1</b>
Appropriated S/F								
Non-Appropriated S/F								
	<u>10.0</u>	<u>15.1</u>	<u>15.1</u>	<u>15.1</u>				<u><b>15.1</b></u>
<b>Supplies and Materials</b>								
General Funds	2.1	3.5	3.5	3.5				<b>3.5</b>
Appropriated S/F								
Non-Appropriated S/F								
	<u>2.1</u>	<u>3.5</u>	<u>3.5</u>	<u>3.5</u>				<u><b>3.5</b></u>
<b>School Elections</b>								
General Funds	50.5	37.8	37.8	37.8				<b>37.8</b>
Appropriated S/F								
Non-Appropriated S/F								
	<u>50.5</u>	<u>37.8</u>	<u>37.8</u>	<u>37.8</u>				<u><b>37.8</b></u>
<b>Primary and General Election</b>								
General Funds			622.8					
Appropriated S/F								
Non-Appropriated S/F								
			<u>622.8</u>					
<b>TOTAL</b>								
General Funds	261.4	260.2	892.0	260.2	3.5		5.5	<b>269.2</b>
Appropriated S/F								
Non-Appropriated S/F								
	<u>261.4</u>	<u>260.2</u>	<u>892.0</u>	<u>260.2</u>	<u>3.5</u>		<u>5.5</u>	<u><b>269.2</b></u>
<b>IPU REVENUES</b>								
General Funds								
Appropriated S/F								
Non-Appropriated S/F								
<b>POSITIONS</b>								
General Funds								
Appropriated S/F								
Non-Appropriated S/F								

ELECTIONS  
 KENT COUNTY ELECTIONS  
 KENT COUNTY ELECTIONS  
 INTERNAL PROGRAM UNIT SUMMARY

70-03-01					Inflation			
Lines	FY 2019 Actual	FY 2020 Budget	FY 2021 Request	FY 2021 Base	& Volume Adjustment	Structural Changes	Enhance- ments	FY 2021 Recommend

**BASE, INFLATION, STRUCTURAL CHANGES, ENHANCEMENTS AND ONE-TIME ITEMS**

\*Recommend inflation and volume adjustment of \$3.5 in Contractual Services for lease obligations.

\*Recommend enhancement of \$5.5 in Contractual Services for absentee ballot paper printer lease.

\*Recommend one-time funding of \$622.8 in Primary and General Election in the Fiscal Year 2021 Supplemental One-Time Appropriations Act for the 2020 Primary and General Elections.

**ELECTIONS  
SUSSEX COUNTY ELECTIONS  
SUSSEX COUNTY ELECTIONS  
INTERNAL PROGRAM UNIT SUMMARY**

<b>70-04-01</b>								
<b>Lines</b>	<b>FY 2019 Actual</b>	<b>FY 2020 Budget</b>	<b>FY 2021 Request</b>	<b>FY 2021 Base</b>	<b>Inflation &amp; Volume Adjustment</b>	<b>Structural Changes</b>	<b>Enhance- ments</b>	<b>FY 2021 Recommend</b>
<b>Travel</b>								
General Funds	2.2	2.2	2.2	2.2				2.2
Appropriated S/F								
Non-Appropriated S/F								
	2.2	2.2	2.2	2.2				2.2
<b>Contractual Services</b>								
General Funds	30.5	40.8	40.8	40.8				40.8
Appropriated S/F								
Non-Appropriated S/F								
	30.5	40.8	40.8	40.8				40.8
<b>Supplies and Materials</b>								
General Funds	10.3	12.7	12.7	12.7				12.7
Appropriated S/F								
Non-Appropriated S/F								
	10.3	12.7	12.7	12.7				12.7
<b>Capital Outlay</b>								
General Funds		2.0	2.0	2.0				2.0
Appropriated S/F								
Non-Appropriated S/F								
		2.0	2.0	2.0				2.0
<b>School Elections</b>								
General Funds	59.4	38.8	52.6	38.8			13.8	52.6
Appropriated S/F								
Non-Appropriated S/F								
	59.4	38.8	52.6	38.8			13.8	52.6
<b>Primary and General Election</b>								
General Funds			597.3					
Appropriated S/F								
Non-Appropriated S/F								
			597.3					
<b>TOTAL</b>								
General Funds	102.4	96.5	707.6	96.5			13.8	110.3
Appropriated S/F								
Non-Appropriated S/F								
	102.4	96.5	707.6	96.5			13.8	110.3
<b>IPU REVENUES</b>								
General Funds	1.0	2.0	2.0	2.0				2.0
Appropriated S/F								
Non-Appropriated S/F								
	1.0	2.0	2.0	2.0				2.0

ELECTIONS  
 SUSSEX COUNTY ELECTIONS  
 SUSSEX COUNTY ELECTIONS  
 INTERNAL PROGRAM UNIT SUMMARY

70-04-01					Inflation			
Lines	FY 2019 Actual	FY 2020 Budget	FY 2021 Request	FY 2021 Base	& Volume Adjustment	Structural Changes	Enhance- ments	FY 2021 Recommend

**POSITIONS**

- General Funds
- Appropriated S/F
- Non-Appropriated S/F

**BASE, INFLATION, STRUCTURAL CHANGES, ENHANCEMENTS AND ONE-TIME ITEMS**

\*Recommend enhancement of \$13.8 in School Elections for supplies and poll worker costs.

\*Recommend one-time funding of \$578.4 in Primary and General Election in the Fiscal Year 2021 Supplemental One-Time Appropriations Act for the 2020 Primary and General Elections. Do not recommend additional one-time funding of \$18.9 in Primary and General Election.