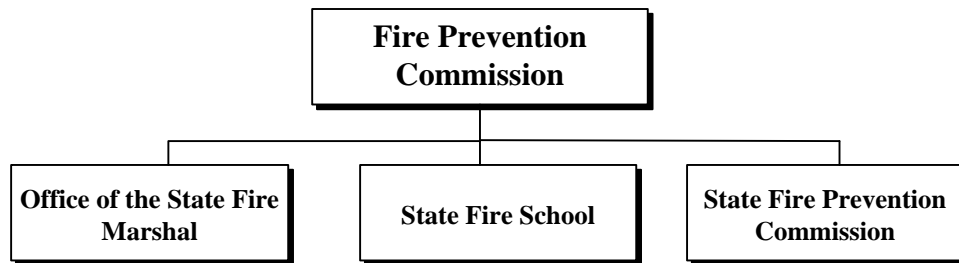
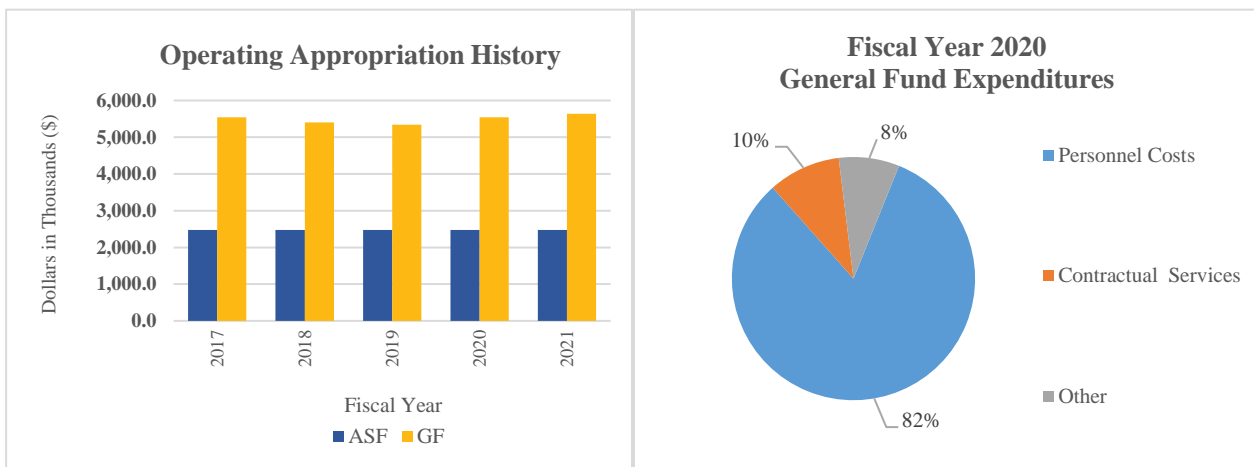


Fire Prevention Commission



At a Glance

- Protect life and property from fire for the residents of Delaware;
- Provide residents of Delaware and all visitors a fire safe environment in the home, the workplace or wherever they pursue their varied interests;
- Provide firefighters, Emergency Medical Services personnel, first responders and residents with professional instruction and training to ensure quality emergency response; and
- Improve public safety in the State.



Overview

The Office of the State Fire Marshal provides enforcement of the state fire prevention regulations; performs inspections, plans reviews, fire investigations and juvenile intervention programs; and interacts with the public.

The State Fire School provides daily trainings, undertakes projects and engages in activities which will serve to improve emergency response capabilities of the State's fire responders.

Fire Prevention Commission



The State Fire Prevention Commission provides leadership, policy development, planning and analysis regarding state fire prevention regulations, ambulance regulations, fire company financial reporting, Emergency Medical Technician certification, ambulance inspections and investigatory services.

On the Web

For more information about the Office of the State Fire Marshal, visit statefiremarshal.delaware.gov.

For more information about the State Fire School, visit statefireschool.delaware.gov.

For more information about the State Fire Prevention Commission, visit statefirecommission.delaware.gov.

Performance Measures

IPU	Performance Measure Name	Fiscal Year 2020 Actual	Fiscal Year 2021 Budget	Fiscal Year 2022 Governor's Recommended
75-01-01	<i>Office of the State Fire Marshal</i>			
	Life Safety Inspections conducted per deputy	157	180	205
	Fire Code Complaints handled per deputy*	62	70	80
	Average turnaround time for full plan reviews (days)	9	8	7
	Fire investigation caseload per deputy	55	65	75
	Plan review caseload per fire protection specialist	385	425	465
	Full plan reviews/ inspections:			
	New Castle County	2,199	2,420	2,660
	Kent County	501	550	605
	Sussex County	1,918	2,110	2,320
<i>*Performance results have been impacted by COVID-19.</i>				
75-02-01	<i>State Fire School</i>			
	# of programs*	674	1,500	1,500
	# of fire safety/injury prevention programs	184	250	250

Fire Prevention Commission



IPU	Performance Measure Name	Fiscal Year 2020 Actual	Fiscal Year 2021 Budget	Fiscal Year 2022 Governor's Recommended
	# of students:			
	fire/rescue	7,245	10,000	10,000
	emergency care	3,138	6,000	6,000
	industry	768	1,000	1,000
	hazardous materials technician program	115	500	500
	fire safety/injury prevention	49,676	50,000	50,000
<i>*Performance results have been impacted by COVID-19.</i>				
75-03-01	State Fire Prevention Commission			
	# of hearings - public, appeal, and grievance	21	18	18
	# of commission meetings	12	12	12
	# of fire service functions	341	300	300
	# of emergency service functions	110	75	75

**FIRE PREVENTION COMMISSION
DEPARTMENT SUMMARY**

75-00-00

Appropriation Units	POSITIONS				DOLLARS			
	FY 2020 Actual	FY 2021 Budget	FY 2022 Request	FY 2022 Recommend	FY 2020 Actual	FY 2021 Budget	FY 2022 Request	FY 2022 Recommend
Office of the State Fire Marshal								
General Fund	26.5	26.5	26.5	26.5	2,543.0	2,720.1	2,868.9	2,793.9
Appropriated Special Fund	25.5	25.5	25.5	25.5	1,968.1	2,424.7	2,424.7	2,424.7
Non-Approp. Special Fund								
	52.0	52.0	52.0	52.0	4,511.1	5,144.8	5,293.6	5,218.6
State Fire School								
General Fund	18.5	18.5	18.5	18.5	2,347.3	2,581.4	2,722.4	2,662.4
Appropriated Special Fund					13.8	50.0	50.0	50.0
Non-Approp. Special Fund	0.5	0.5	0.5	0.5	819.6	870.3	870.3	870.3
	19.0	19.0	19.0	19.0	3,180.7	3,501.7	3,642.7	3,582.7
State Fire Prevention Commission								
General Fund	3.0	3.0	5.0	4.0	368.9	335.4	515.0	400.3
Appropriated Special Fund								
Non-Approp. Special Fund					5,067.8			
	3.0	3.0	5.0	4.0	5,436.7	335.4	515.0	400.3
TOTAL								
General Fund	48.0	48.0	50.0	49.0	5,259.2	5,636.9	6,106.3	5,856.6
Appropriated Special Fund	25.5	25.5	25.5	25.5	1,981.9	2,474.7	2,474.7	2,474.7
Non-Approp. Special Fund	0.5	0.5	0.5	0.5	5,887.4	870.3	870.3	870.3
	74.0	74.0	76.0	75.0	13,128.5	8,981.9	9,451.3	9,201.6

**Fire Prevention Commission
Office of the State Fire Marshal
Office of the State Fire Marshal
Internal Program Unit Summary**

75-01-01								
LINES	FY 2020 Actual	FY 2021 Budget	FY 2022 Request	FY 2022 Base	Inflation & Volume Adjustment	Structural Changes	Enhance- ments	FY 2022 Recommend
Personnel Costs								
General Fund	2,208.8	2,377.9	2,406.7	2,406.7				2,406.7
Appropriated Special Fund	1,810.0	1,745.2	1,745.2	1,745.2				1,745.2
Non-Approp. Special Fund								
	4,018.8	4,123.1	4,151.9	4,151.9				4,151.9
Travel								
General Fund								
Appropriated Special Fund	2.4	34.0	34.0	34.0				34.0
Non-Approp. Special Fund								
	2.4	34.0	34.0	34.0				34.0
Contractual Services								
General Fund	257.1	263.2	383.2	263.2			45.0	308.2
Appropriated Special Fund	115.8	366.8	366.8	366.8				366.8
Non-Approp. Special Fund								
	372.9	630.0	750.0	630.0			45.0	675.0
Energy								
General Fund	39.0	55.6	55.6	55.6				55.6
Appropriated Special Fund								
Non-Approp. Special Fund								
	39.0	55.6	55.6	55.6				55.6
Supplies and Materials								
General Fund	38.1	23.4	23.4	23.4				23.4
Appropriated Special Fund	16.2	81.0	81.0	81.0				81.0
Non-Approp. Special Fund								
	54.3	104.4	104.4	104.4				104.4
Capital Outlay								
General Fund								
Appropriated Special Fund	23.5	196.2	196.2	196.2				196.2
Non-Approp. Special Fund								
	23.5	196.2	196.2	196.2				196.2
Revenue Refund								
General Fund								
Appropriated Special Fund	0.2	1.5	1.5	1.5				1.5
Non-Approp. Special Fund								
	0.2	1.5	1.5	1.5				1.5
TOTAL								
General Fund	2,543.0	2,720.1	2,868.9	2,748.9			45.0	2,793.9
Appropriated Special Fund	1,968.1	2,424.7	2,424.7	2,424.7				2,424.7
Non-Approp. Special Fund								
	4,511.1	5,144.8	5,293.6	5,173.6			45.0	5,218.6

**Fire Prevention Commission
Office of the State Fire Marshal
Office of the State Fire Marshal
Internal Program Unit Summary**

75-01-01								
LINES	FY 2020 Actual	FY 2021 Budget	FY 2022 Request	FY 2022 Base	Inflation & Volume Adjustment	Structural Changes	Enhance- ments	FY 2022 Recommend
IPU REVENUES								
General Fund	107.3	65.8	65.8	65.8				65.8
Appropriated Special Fund	4,412.5	2,737.3	2,737.3	2,737.3				2,737.3
Non-Approp. Special Fund	81.7							
	<u>4,601.5</u>	<u>2,803.1</u>	<u>2,803.1</u>	<u>2,803.1</u>				<u>2,803.1</u>
POSITIONS								
General Fund	26.5	26.5	26.5	26.5				26.5
Appropriated Special Fund	25.5	25.5	25.5	25.5				25.5
Non-Approp. Special Fund								
	<u>52.0</u>	<u>52.0</u>	<u>52.0</u>	<u>52.0</u>				<u>52.0</u>

BASE, INFLATION, STRUCTURAL CHANGES, ENHANCEMENTS AND ONE-TIME ITEMS

- Recommend enhancement of \$45.0 in Contractual Services for licenses and maintenance for the Fire Marshal Information System.
- Recommend one-time funding of \$75.0 in Contractual Services to replace Cisco Switches in the Fiscal Year 2022 Supplemental One-Time Appropriations Act.

**Fire Prevention Commission
State Fire School
State Fire School
Internal Program Unit Summary**

75-02-01								
LINES	FY 2020 Actual	FY 2021 Budget	FY 2022 Request	FY 2022 Base	Inflation & Volume Adjustment	Structural Changes	Enhance- ments	FY 2022 Recommend
Personnel Costs								
General Fund	1,852.2	1,976.6	1,977.6	1,977.6				1,977.6
Appropriated Special Fund								
Non-Approp. Special Fund	38.9	44.9	44.9	44.9				44.9
	<u>1,891.1</u>	<u>2,021.5</u>	<u>2,022.5</u>	<u>2,022.5</u>				<u>2,022.5</u>
Travel								
General Fund								
Appropriated Special Fund								
Non-Approp. Special Fund	12.0	14.0	14.0	14.0				14.0
	<u>12.0</u>	<u>14.0</u>	<u>14.0</u>	<u>14.0</u>				<u>14.0</u>
Contractual Services								
General Fund	219.0	219.1	359.1	219.1			80.0	299.1
Appropriated Special Fund								
Non-Approp. Special Fund	167.4	279.5	279.5	279.5				279.5
	<u>386.4</u>	<u>498.6</u>	<u>638.6</u>	<u>498.6</u>			<u>80.0</u>	<u>578.6</u>
Energy								
General Fund	109.2	90.6	90.6	90.6				90.6
Appropriated Special Fund								
Non-Approp. Special Fund								
	<u>109.2</u>	<u>90.6</u>	<u>90.6</u>	<u>90.6</u>				<u>90.6</u>
Supplies and Materials								
General Fund	51.0	110.0	110.0	110.0				110.0
Appropriated Special Fund								
Non-Approp. Special Fund	400.8	526.9	526.9	526.9				526.9
	<u>451.8</u>	<u>636.9</u>	<u>636.9</u>	<u>636.9</u>				<u>636.9</u>
Capital Outlay								
General Fund	35.5	35.5	35.5	35.5				35.5
Appropriated Special Fund								
Non-Approp. Special Fund	200.0							
	<u>235.5</u>	<u>35.5</u>	<u>35.5</u>	<u>35.5</u>				<u>35.5</u>
EMT Training								
General Fund	75.8	145.0	145.0	145.0				145.0
Appropriated Special Fund								
Non-Approp. Special Fund								
	<u>75.8</u>	<u>145.0</u>	<u>145.0</u>	<u>145.0</u>				<u>145.0</u>
Local Emergency Planning Commission								
General Fund								
Appropriated Special Fund	13.8	50.0	50.0	50.0				50.0
Non-Approp. Special Fund								
	<u>13.8</u>	<u>50.0</u>	<u>50.0</u>	<u>50.0</u>				<u>50.0</u>

**Fire Prevention Commission
State Fire School
State Fire School
Internal Program Unit Summary**

75-02-01								
LINES	FY 2020 Actual	FY 2021 Budget	FY 2022 Request	FY 2022 Base	Inflation & Volume Adjustment	Structural Changes	Enhance- ments	FY 2022 Recommend
Other Items								
General Fund								
Appropriated Special Fund								
Non-Approp. Special Fund	0.5	5.0	5.0	5.0				5.0
	<u>0.5</u>	<u>5.0</u>	<u>5.0</u>	<u>5.0</u>				<u>5.0</u>
Stress Management								
General Fund	4.6	4.6	4.6	4.6				4.6
Appropriated Special Fund								
Non-Approp. Special Fund								
	<u>4.6</u>	<u>4.6</u>	<u>4.6</u>	<u>4.6</u>				<u>4.6</u>
TOTAL								
General Fund	2,347.3	2,581.4	2,722.4	2,582.4			80.0	2,662.4
Appropriated Special Fund	13.8	50.0	50.0	50.0				50.0
Non-Approp. Special Fund	819.6	870.3	870.3	870.3				870.3
	<u>3,180.7</u>	<u>3,501.7</u>	<u>3,642.7</u>	<u>3,502.7</u>			<u>80.0</u>	<u>3,582.7</u>
IPU REVENUES								
General Fund								
Appropriated Special Fund	23.8	50.0	50.0	50.0				50.0
Non-Approp. Special Fund	935.6	870.3	870.3	870.3				870.3
	<u>959.4</u>	<u>920.3</u>	<u>920.3</u>	<u>920.3</u>				<u>920.3</u>
POSITIONS								
General Fund	18.5	18.5	18.5	18.5				18.5
Appropriated Special Fund								
Non-Approp. Special Fund	0.5	0.5	0.5	0.5				0.5
	<u>19.0</u>	<u>19.0</u>	<u>19.0</u>	<u>19.0</u>				<u>19.0</u>

BASE, INFLATION, STRUCTURAL CHANGES, ENHANCEMENTS AND ONE-TIME ITEMS

- Recommend enhancement of \$80.0 in Contractual Services for Fire School information support.
- Recommend one-time funding of \$60.0 in Contractual Services to replace Cisco Switches in the Fiscal Year 2022 Supplemental One-Time Appropriations Act.

**Fire Prevention Commission
State Fire Prevention Commission
State Fire Prevention Commission
Internal Program Unit Summary**

75-03-01								
LINES	FY 2020 Actual	FY 2021 Budget	FY 2022 Request	FY 2022 Base	Inflation & Volume Adjustment	Structural Changes	Enhance- ments	FY 2022 Recommend
Personnel Costs								
General Fund	228.5	197.8	365.2	197.9			59.8	257.7
Appropriated Special Fund								
Non-Approp. Special Fund								
	228.5	197.8	365.2	197.9			59.8	257.7
Travel								
General Fund	13.0	13.0	13.0	13.0				13.0
Appropriated Special Fund								
Non-Approp. Special Fund								
	13.0	13.0	13.0	13.0				13.0
Contractual Services								
General Fund	47.6	44.5	56.7	44.5			5.0	49.5
Appropriated Special Fund								
Non-Approp. Special Fund	5,067.6							
	5,115.2	44.5	56.7	44.5			5.0	49.5
Supplies and Materials								
General Fund	5.4	5.1	5.1	5.1				5.1
Appropriated Special Fund								
Non-Approp. Special Fund	0.2							
	5.6	5.1	5.1	5.1				5.1
Statewide Fire Safety Education								
General Fund	74.4	75.0	75.0	75.0				75.0
Appropriated Special Fund								
Non-Approp. Special Fund								
	74.4	75.0	75.0	75.0				75.0
TOTAL								
General Fund	368.9	335.4	515.0	335.5			64.8	400.3
Appropriated Special Fund								
Non-Approp. Special Fund	5,067.8							
	5,436.7	335.4	515.0	335.5			64.8	400.3
IPU REVENUES								
General Fund	4.1							
Appropriated Special Fund								
Non-Approp. Special Fund	3,982.9							
	3,987.0	0.0	0.0	0.0				0.0

**Fire Prevention Commission
State Fire Prevention Commission
State Fire Prevention Commission
Internal Program Unit Summary**

75-03-01					Inflation & Volume Adjustment	Structural Changes	Enhance- ments	FY 2022 Recommend
LINES	FY 2020 Actual	FY 2021 Budget	FY 2022 Request	FY 2022 Base				
POSITIONS								
General Fund	3.0	3.0	5.0	3.0			1.0	4.0
Appropriated Special Fund								
Non-Approp. Special Fund								
	3.0	3.0	5.0	3.0			1.0	4.0

BASE, INFLATION, STRUCTURAL CHANGES, ENHANCEMENTS AND ONE-TIME ITEMS

- Recommend enhancements of 1.0 FTE Administrative Specialist II and \$59.8 in Personnel Costs for administrative investigation work; and \$5.0 in Contractual Services for Background Check training. Do not recommend additional enhancements of \$107.5 in Personnel Costs and 1.0 FTE, and \$7.2 in Contractual Services.