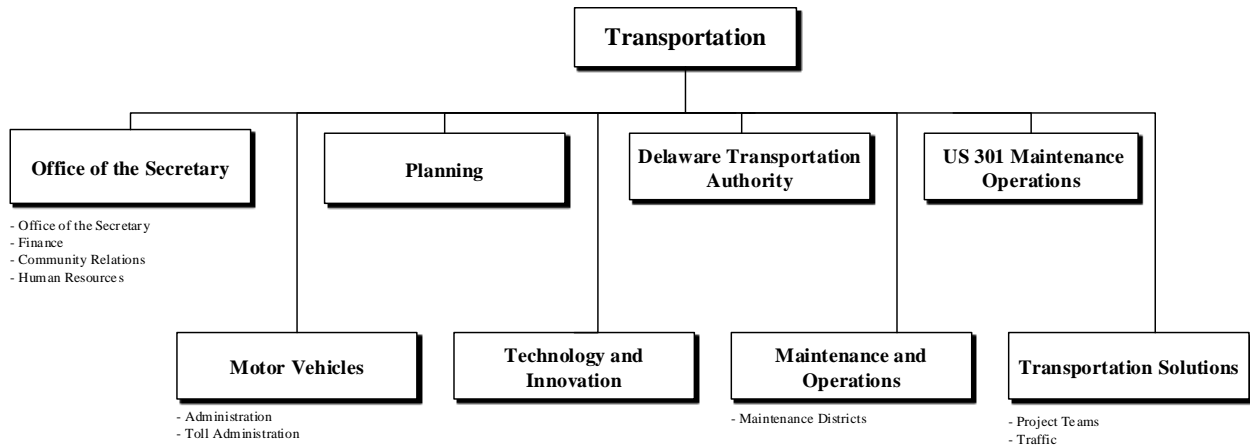


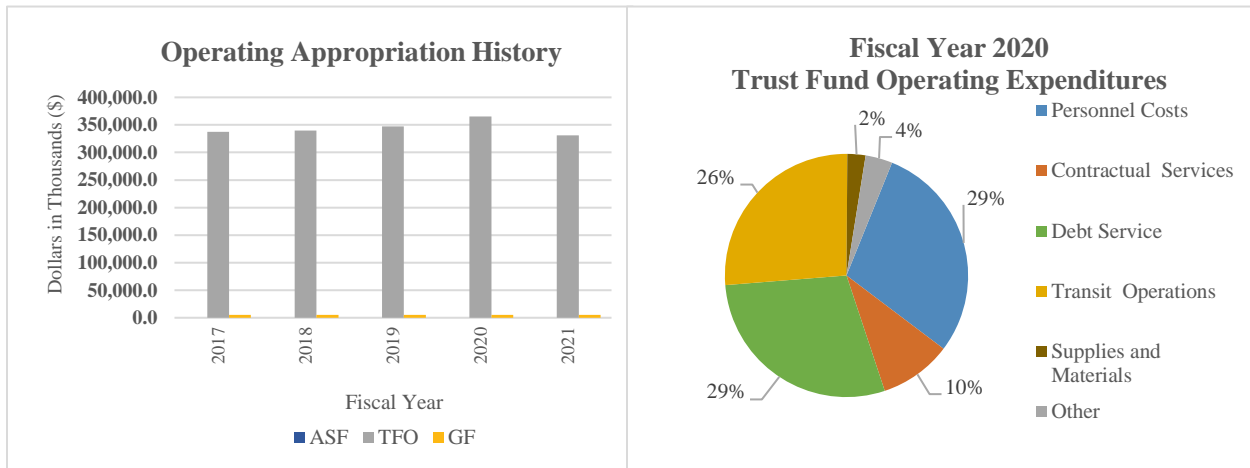
# Transportation



## At a Glance

- Maintain 13,541 lane miles of roadways, 1,722 bridges, one ferry, more than 1,100 signals, 300,000 signs, 323 miles of fiber optic cable, 150 traffic cameras, nearly 700 Intelligent Transportation System devices, more than 2,800 pedestrian signal push buttons, 1,376 miles of storm drains, 3,514 miles of drainage ditches, more than 85,000 drainage structures and 540 storm water management facilities;
- Mow 50,000 acres of grass, trim 126 miles of roadside vegetation and work with the Department of Correction to clean-up 6,000 miles of Delaware roadways;
- Enhance the quality of life in Delaware by integrating transportation, land use and air quality strategies;
- Maintain a transportation program that integrates all modes statewide, including critical roadway projects, transit service, and bicycle and pedestrian improvements; and
- Discover and solve transportation problems by collecting, analyzing, summarizing and publishing transportation-related data, including customer service and satisfaction data.

# Transportation



## Overview

The mission of the Delaware Department of Transportation (DelDOT) is to promote excellence in transportation for every mode, for every trip, for every dollar and for everyone. To effectively carry out the mission of the department, DelDOT focuses on improving services and making the right investments in Delaware's transportation system at the right time.

## On the Web

For more information, visit [deldot.gov](http://deldot.gov).

## Performance Measures

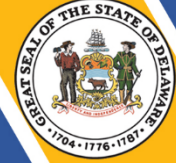
IPU	Performance Measure Name	Fiscal Year 2020 Actual	Fiscal Year 2021 Budget	Fiscal Year 2022 Governor's Recommended
<b>55-01-01</b>	<b>Office of the Secretary</b>			
	% of Freedom of Information Act responses within 15 days	98	98	98
	% of pre-award audits completed within three days	93	94	94
<b>55-01-02</b>	<b>Finance</b>			
	Department bond rating	AA1/AA+	AA1/AA+	AA1/AA+
	Debt service coverage ratio	4.9	5.63	4.84
	Debt service as a % of revenue	21.0	19.9	23.0

# Transportation



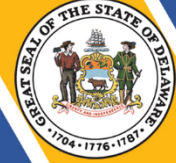
IPU	Performance Measure Name	Fiscal Year 2020 Actual	Fiscal Year 2021 Budget	Fiscal Year 2022 Governor's Recommended
	% of public works contracts advertised within 10 business days of receipt of required information	85	85	85
<b>55-01-03</b>	<b>Community Relations *</b>			
	# of participants attending public workshops and hearings	1495	2025	2000
<b>55-01-04</b>	<b>Human Resources</b> *The summer Co-Op Intern Program was placed on hold due to Covid restrictions			
	# of High School Summer Co-op program recruits hired	*14	27	N/A
	Engineer I-IV Sign-On Bonus program hired	N/A	N/A	15
<b>55-02-01</b>	<b>Technology and Innovation</b>			
	% of help desk calls resolved within three working days	85	85	85
<b>55-03-01</b>	<b>Planning</b>			
	% of preliminary traffic impact studies reviewed within 30 days of receipt	100	100	100
	% of subdivision reviews within 45 days of receipt	10	95	98
	Length of bike facilities added to the network (miles)	32	13	12
<b>55-04-70</b>	<b>Maintenance Districts</b>			
	% of time snowfall of 4" or less removed within 24 hours after end of storm	100	100	100
	% of time snowfall of 4-8" removed within 48 hours after end of storm	100	100	100
	% of time snowfall of 8" or greater removed within 72 hours after end of storm	100	100	100

# Transportation



IPU	Performance Measure Name	Fiscal Year 2020 Actual	Fiscal Year 2021 Budget	Fiscal Year 2022 Governor's Recommended
	% of equipment exceeding age and/or usage parameters	6.4	10	10
	% of Community Transportation Fund requests for estimates processed within 20 business days	93.7	85	85
<b>55-06-01</b>	<b><i>Delaware Transportation Authority</i></b>			
	Statewide annual ridership (millions)	7.6	9.4	7.9
	% system-wide recovery ratio	11	15	12
	# of accidents per 100,000 miles	2.85	2.25	2.25
<b>55-07-01</b>	<b><i>US 301 Maintenance Operations</i></b>			
	Anticipated ridership (millions)	5.65	5.6	5.8
<b>55-08-30</b>	<b><i>Project Teams</i></b>			
	% of construction projects completed on time including approved time extensions	71	90	80
	% of non-open end construction projects completed with less than 10 percent overruns	83	90	90
	% of bridges rated in good or fair condition	98	98	95
	# of curb ramps reconstructed per year to Americans with Disabilities Act standards	1005	500	500
	% of pavements in good/fair condition (excluding subdivision streets)	89	85	85
<b>55-08-40</b>	<b><i>Traffic</i></b>			
	% of critical signal maintenance calls responded to and corrected in 24 hours	97	100	100

# Transportation



IPU	Performance Measure Name	Fiscal Year 2020 Actual	Fiscal Year 2021 Budget	Fiscal Year 2022 Governor's Recommended
<b>55-11-10</b>	<b>Administration</b> * Note- Class D Road Exams ceased March 2020 through July 2020 due to COVID-19			
	% of time meeting Division of Motor Vehicles 20-minute wait time standard	77.98	85	80
	# of Class D road exams completed	*9,251	11,700	14,402
	# of successful self-service kiosk transactions	55,327	45,000	60,000
	% increase of social media audience:			
	Facebook	38.51	+25	+45
	Instagram	36.38	+30	+40
	Twitter	10.05	+10	+15
	# of students enrolled in motorcycle safety classes	1,589	1,180	1,610
	# of vehicle inspections	384,885	400,609	409,000
<b>55-11-60</b>	<b>Toll Administration</b>			
	% of E-ZPass market use:			
	I-95	78	78	78
	SR 1-Dover	76	76	77
	SR 1-Biddles	75	75	76