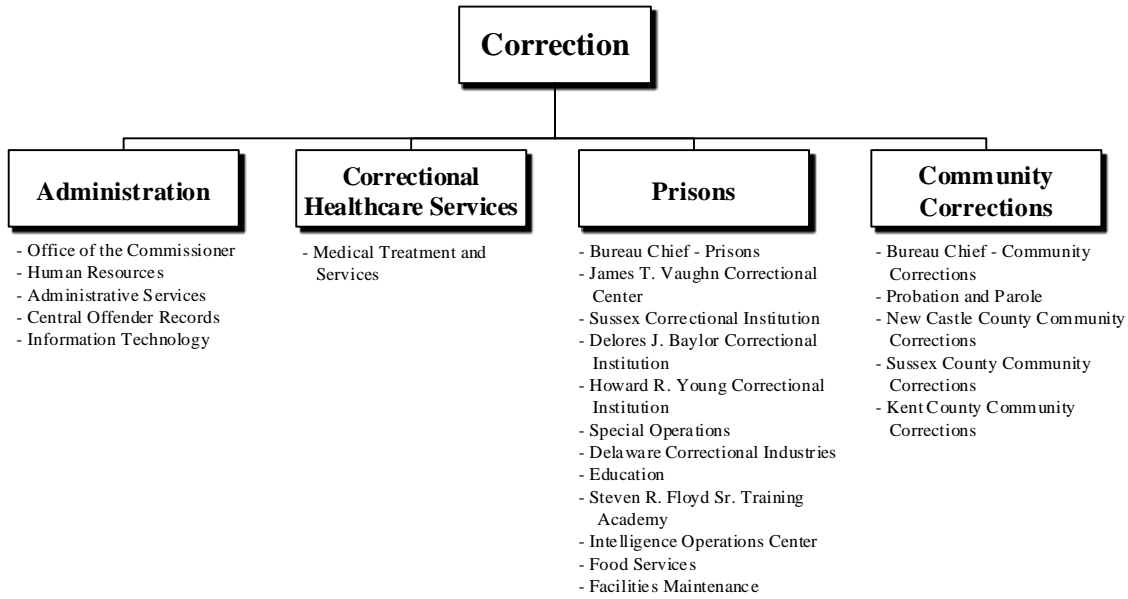
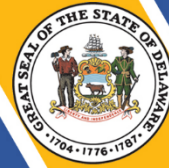
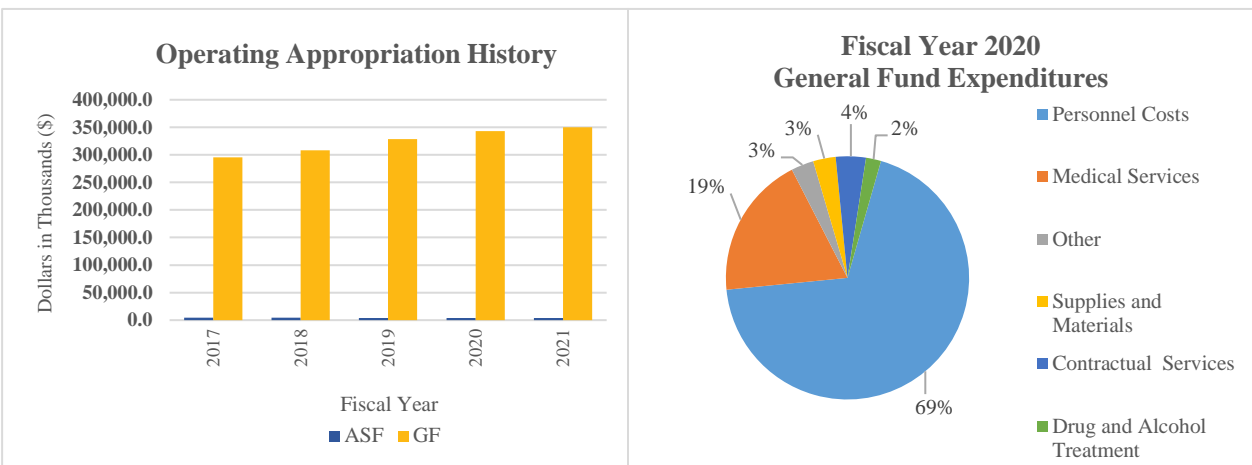


Correction



At a Glance

- Enhance public safety through the supervision of 7,000 adult offenders and 14,000 probationers within Department of Correction (DOC) facilities and communities;
- Create an environment conducive to productive offender programming and treatment;
- Maintain a stable and skilled workforce through recruitment initiatives and varied professional development opportunities;
- Maintain a system-wide emergency preparedness response capability; and
- Ensure every offender receives medical healthcare in compliance with National Commission on Correctional Health Care standards.



Correction



Overview

The mission of DOC is to protect the public by supervising adult offenders through safe and humane services, programs and facilities. The department is comprised of the Office of the Commissioner, Bureau of Administrative Services, Bureau of Healthcare, Substance Abuse and Mental Health Services, Bureau of Prisons and Bureau of Community Corrections.

On the Web

For more information visit doc.delaware.gov.

Performance Measures

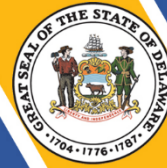
IPU	Performance Measure Name	Fiscal Year 2020 Actual	Fiscal Year 2021 Budget	Fiscal Year 2022 Governor's Recommended
38-01-01	<i>Office of the Commissioner</i>			
	# of random/periodic Internal Affairs rechecks	2,504	2,520	2,520
	# of positive media stories generated	136	140	140
	# of victim notification letters	14,308	15,000	15,000
38-01-02	<i>Human Resources</i>			
	# of random drugs tests of employees	1,476	2,311	2,311
	# of grievances at Commissioner's level	24	35	35
38-01-03	<i>Planning, Research and Reentry</i>			
	# of statistical data responses	103	130	130
	# of community partnerships overseen via multi-disciplinary DOC committee	14	14	14
38-01-04	<i>Education</i>			
	# of offenders tested to determine education needs	728	430	560
	# of offenders enrolled in academic, vocational and life skills	1,924	1,200	2,009

Correction



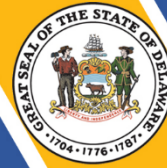
IPU	Performance Measure Name	Fiscal Year 2020 Actual	Fiscal Year 2021 Budget	Fiscal Year 2022 Governor's Recommended
	# of GEDs earned	67	27	154
	# of high school diplomas earned	26	36	66
	# of educational certificates earned	837	380	944
	# of vocational certificates	1,003	436	1,291
	# of life skills certificates completed	248	156	428
38-01-10	Administrative Services			
	# of payment vouchers reported as exceptions on quarterly reconciliation	8	0	0
	# of purchase orders reported as exceptions on quarterly reconciliation	0	0	0
	# of days to complete the monthly procurement card reconciliation from end of billing cycle	32	30	25
	# of on-demand payroll checks processed	104	140	140
38-01-12	Central Offender Records			
	# of admissions processed	11,331	11,831	11,580
	# of felony transmittal requests/research	4,862	5,000	3,370
	# of sentences calculated	22,687	22,732	22,700
	# of releases processed	10,366	13,328	11,866
	% of offenders released in error	.0002	.0006	.0004
	# of tax credit requests	660	1,813	924
38-01-14	Information Technology			
	% of high priority help desk calls resolved within one hour	96	94	95
38-02-01	Medical Treatment and Services			
	% of sick calls requests in which face-to-face with a clinician occurs within 24 hours	90	95	95

Correction



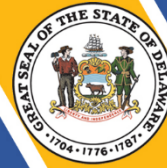
IPU	Performance Measure Name	Fiscal Year 2020 Actual	Fiscal Year 2021 Budget	Fiscal Year 2022 Governor's Recommended
	% of chronic care enrolled patients seen in follow-up appointment when due	76	85	90
	% of patients in the Residential Treatment Unit that are offered a minimum of 10 hours of structured therapeutic time per week	64	95	95
	% of classified patients that completed a substance use disorder program	97	85	85
	% of offenders referred for Medicated Assisted Treatment/Medicated Assisted Withdrawal that are seen within the allotted time	86	90	90
38-04-01 Bureau Chief - Prisons				
	# of offenders classified to: drug treatment programs work release supervised custody	523	600	600
	# of offenders recommended for truth in sentencing modifications	17	20	20
	# of security/custody level classifications (initial/reclassifications)	4,103/5,968	4,200/6,000	4,200/6,000
	# of interstate compact cases (in-state/out-of-state)	31/430	30/315	30/90
	# of Level Service Inventory Revised assessments	1,555	1,750	1,750
	# of Quality Assessment Audits completed	12	12	12
38-04-03 James T. Vaughn Correctional Center				
	# of offender work hours:			
	community service	18,149	21,000	21,000
	food service	154,932	250,000	250,000
	maintenance	37,357	40,000	40,000
	janitorial	329,033	355,000	355,000
	laundry	74,752	74,000	74,000
	other*	233,961	230,000	230,000

Correction



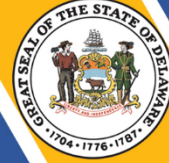
IPU	Performance Measure Name	Fiscal Year 2020 Actual	Fiscal Year 2021 Budget	Fiscal Year 2022 Governor's Recommended
	\$ cost avoidance at \$9.25 minimum wage (thousands)	7,845.7	8,972.5	8,972.5
	# of escapes	0	0	0
	# of Braille pages produced:			
	Braille transcription	44,472	43,300	43,300
	large print	7,278	2,000	2,000
	graphics	4,443	4,000	4,000
	digital pages	25,328	18,000	18,000
	# of program participants:			
	Sex Offender Treatment	151	160	160
	Alcoholics Anonymous	42	60	60
	Alternatives to Violence	107	100	100
	Weekly Religious Activities	680	650	650
	Gamblers Anonymous	20	40	40
	Thresholds	35	40	40
	Gateway	103	120	120
	# of video court/teleconferences	831	825	825
	<i>*Includes barbers, central supply, commissary, clerks, education workers, yard workers, etc.</i>			
38-04-04	Sussex Correctional Institution			
	# of offender work hours:			
	food service	82,752	85,000	85,000
	maintenance	1,787	2,000	2,000
	janitorial	127,574	129,000	129,000
	laundry	39,200	40,000	40,000
	other*	367,707	372,000	372,000
	\$ cost avoidance at \$9.25 minimum wage (thousands)	5,725.9	5,809.0	5,809.0
	# of escapes	0	0	0
	# of program participants:			
	Sex Offender Treatment	81	100	100
	Key	281	325	325
	Alcoholics Anonymous	1,800	1,200	1,200
	Alternatives to Violence	65	50	50
	Youthful Criminal Offenders**	9	0	0
	Reflections	145	175	175
	6 for 1	432	500	500
	Parenting Class	24	50	50
	Arts Program***	0	0	50
	# of video court/teleconferences	7,014	8,200	8,200
	<i>*Includes barbers, central supply, commissary, clerks, education workers, yard workers, etc.</i>			
	<i>**Program transferred to Howard R. Young Correctional Institution in Fiscal Year 2020.</i>			

Correction



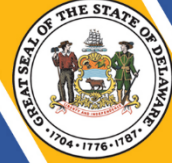
IPU	Performance Measure Name	Fiscal Year 2020 Actual	Fiscal Year 2021 Budget	Fiscal Year 2022 Governor's Recommended
<p>*** Program temporarily suspended at the end of Fiscal Year 2019, anticipate reinstatement in Fiscal Year 2022. This is a separate program from the Prison Arts Program.</p>				
38-04-05	Delores J. Baylor Correctional Institution			
	# of offender work hours:			
	food service	57,957	98,000	98,000
	janitorial	28,727	29,000	29,000
	laundry	12,466	14,000	14,000
	other*	6,442	8,100	8,100
	\$ cost avoidance at \$9.25 minimum wage (thousands)	976.7	1,379.2	1,379.2
	# of escapes	0	0	0
	# of program participants:			
	SOAR	50	75	75
	Key Village	100	80	80
	Structured Care Unit	64	74	74
	Trauma Healing Workshops	2	6	6
	6 for 1	596	669	669
	Sex Offender Treatment	0	4	4
	# of video court/teleconferences	2,799	4,500	4,500
	<i>*Includes barbers, central supply, commissary, clerks, education workers, yard workers, etc.</i>			
38-04-06	Howard R. Young Correctional Institution			
	# of offender work hours:			
	food service	200,939	124,000	124,000
	maintenance	3,568	4,500	4,500
	janitorial	74,813	70,000	70,000
	laundry	19,584	15,000	15,000
	other*	154,815	105,000	105,000
	\$ cost avoidance at \$9.25 minimum wage (thousands)	4,196.9	2,946.1	2,946.1
	# of escapes	0	0	0
	# of program participants:			
	Sex Offender Treatment	61	50	50
	Key	285	225	225
	6 for 1	323	800	800
	Head Start Home	206	180	180
	Inside/Out	17	30	30
	Alternatives to Violence	58	150	150
	Youth Criminal Offenders	8	15	15
	# of video court/teleconferences	7,345	9,000	9,000

Correction



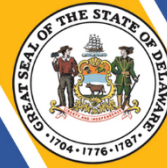
IPU	Performance Measure Name	Fiscal Year 2020 Actual	Fiscal Year 2021 Budget	Fiscal Year 2022 Governor's Recommended
*Includes barbers, central supply, commissary, clerks, education workers, yard workers, etc.				
38-04-08	Special Operations			
	# of offenders transported	30,117	40,000	40,000
	# of Correctional Emergency Response Team missions	141	150	150
	# of K-9 teams certified to Police Dog Level 1	23	24	24
	# of emergency preparedness training exercises	25	40	40
	# of security audits	40	40	40
	# of detector dogs trained and operational	14	14	14
	# of Correctional Emergency Response Team trainings (CERT/CIG/CNT/CISM)	104	104	104
38-04-09	Delaware Correctional Industries			
	# of offenders employed	150	184	184
	\$ net sales (thousands)	1,772.0	2,175.0	2,175.0
	# of completed work orders	3,506	4,334	4,334
38-04-12	Steven R. Floyd Sr. Training Academy			
	# of training educator series certifications/continuing education courses/seminars completed	24	30	30
	# of 40 caliber transition courses (15 officers per course)	0	25	25
	# of range training hours	2,500	2,500	2,500
	# of correctional officer recruits graduating from Correctional Employee Initial Training	129	240	240
	# of probation officer recruits graduating from Basic Officer Training Course	17	40	40
38-04-13	Intelligence Operations Center			
	# of Requests for Information	*	186	186
	# of Requests for Service	*	50	50
	# of Intelligence Products	*	30	300

Correction



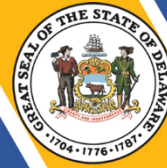
IPU	Performance Measure Name	Fiscal Year 2020 Actual	Fiscal Year 2021 Budget	Fiscal Year 2022 Governor's Recommended
	# of Assists to Institutions	*	150	150
	# of Assists to Partner Agencies	*	50	50
	# of Active Investigations	*	10	10
	# of Support Missioners for CERT/CIG Activations	*	7	7
*New performance measure, no data available for FY20.				
38-04-20	Food Services			
	# of offenders trained in food safety	200	200	200
	# of Central Supply accident-free miles	33,283	33,283	33,283
	# of offender grievances related to food service	406	385	385
	# of meals prepared	6,583,811	6,256,621	6,256,621
38-04-40	Facilities Maintenance			
	# of work orders completed	25,994	21,000	21,000
	% of work orders completed within 30 days	99	100	100
38-06-01	Bureau Chief - Community Corrections			
	% of provider compliance with contractual agreements	100	100	100
	% of bureau polices reviewed	100	100	100
	# of grants monitored	2	2	2
38-06-02	Probation and Parole			
	Average caseload size:			
	Level I	220	230	230
	Level II	52	65	65
	Level III	27	30	30
	Level IV (Home Confinement)	24	20	20
	Pretrial	49	50	50
	% of positive Safe Streets curfew checks	67	70	70
	% of cases successfully discharged (Level I - III)	79	77	77
	% of offenders employed	59	59	59
	% of Level I, Restitution Only cases closed	31	40	40

Correction



IPU	Performance Measure Name	Fiscal Year 2020 Actual	Fiscal Year 2021 Budget	Fiscal Year 2022 Governor's Recommended
	% of positive urine tests (Level I - III)	50	50	50
	% of positive urine tests (Level IV/HC)	26	25	25
	# of Level of Service Inventory - Revised completed	3,732	4,000	4,000
	% of cases closed not returning to prison	84	86	86
	# of monitoring units in service:			
	standard	200	200	200
	cell	100	100	100
	GPS	500	500	500
	Transdermal Alcohol Device	130	130	130
38-06-06	<i>New Castle County Community Corrections</i>			
	% of successful releases	98	99	98
	% of offenders employed	60	50	65
	# of community service hours	31,871	30,272	32,272
	\$ cost avoidance at \$9.25 minimum wage (thousands)	294.8	280.0	298.5
	# of walk-aways	18	15	14
	# of programs available to residents	30	30	30
	# of participants in all programs	474	480	600
38-06-07	<i>Sussex County Community Corrections</i>			
	% of successful releases	94	95	95
	% of offenders employed	76	80	85
	# of community service hours	119,455	120,000	125,000
	\$ cost avoidance at \$9.25 minimum wage (millions)	1,105.0	1,110.0	1,156.3
	# of walk-aways	23	20	20
	# of programs available to residents	21	23	25
	# of participants in all programs	1,313	1,500	2,000
38-06-08	<i>Kent County Community Corrections</i>			
	% of successful releases	71	75	80
	% of offenders employed	78	0	0
	# of community service hours	2,724	5,000	7,500
	\$ cost avoidance at \$9.25 minimum wage (thousands)	25.2	46.3	69.4

Correction



IPU	Performance Measure Name	Fiscal Year 2020 Actual	Fiscal Year 2021 Budget	Fiscal Year 2022 Governor's Recommended
	# of walk-aways	11	10	10
	# of programs available to residents	11	11	11
	# of participants in all programs	582	500	750