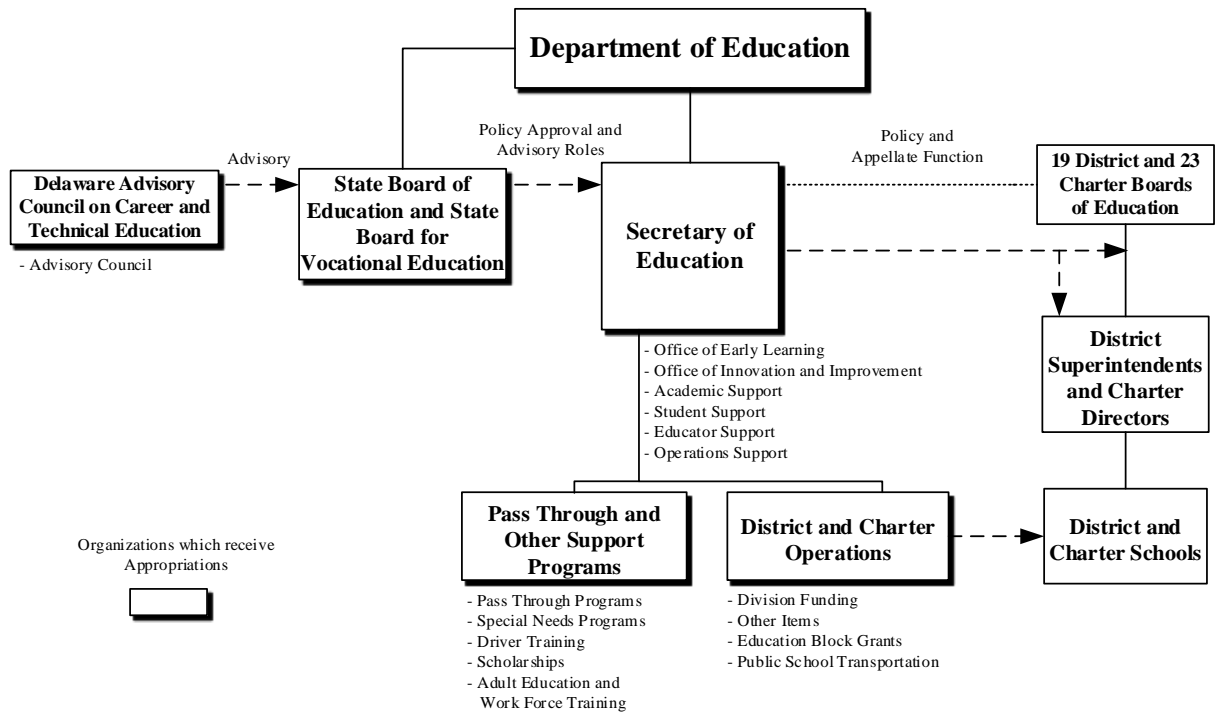
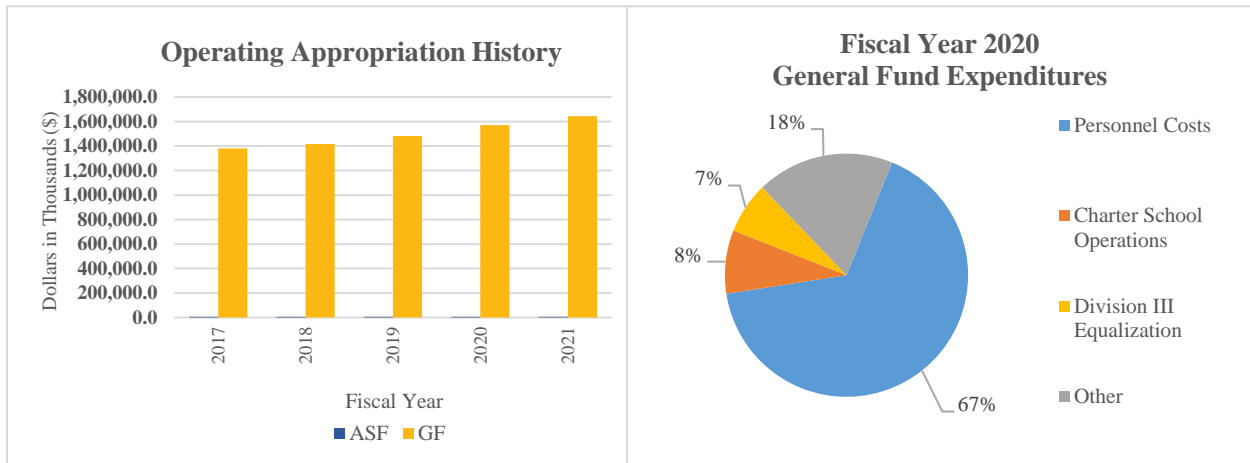


Education

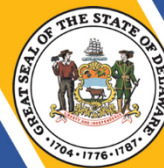


At a Glance

- Implement rigorous standards, instruction and assessments;
- Ensure equitable access to excellent educators;
- Support high quality early learning opportunities;
- Provide safe and healthy environments conducive to learning; and
- Engage and inform families, schools, districts, communities and other agencies.



Education



Overview

In cooperation with the local boards of education, district superintendents, charter leaders, principals, school-based employees, teachers, parents and community members, the Department of Education (DOE) works to significantly improve the number of students successfully meeting college and career-readiness standards. In support of that focus, DOE ensures excellent educators for all students; supports high quality early learning opportunities; provides safe and healthy environments conducive to learning; provides school and community-based supports and enrichment opportunities, effective supports for improving the State's lowest performing schools, flexibility in meeting the needs of the student for achieving results and support to schools and districts in improving the quality of education; engages and informs families, schools, districts, communities and other agencies; and ensures management support.

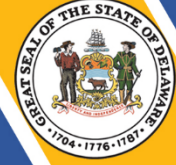
On the Web

For more information, visit doe.k12.de.us.

Performance Measures

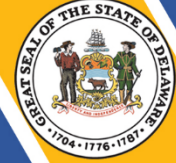
| IPU | Performance Measure Name | Fiscal Year 2020 Actual | Fiscal Year 2021 Budget | Fiscal Year 2022 Governor's Recommended |
|--|--|-------------------------|-------------------------|---|
| 95-01-00 | Department of Education | | | |
| | # of educator evaluation system implementations: | | | |
| | districts | 19 | 19 | 19 |
| | charter schools | 23 | 22 | 22 |
| | # school leaders participating in administrative mentoring | 62 | 55 | 51 |
| | % of Career and Technical Education concentrator students graduating | 97.7 | 97.8 | 98 |
| | # of private business and trade school certification renewals | 116 | 116 | 118 |
| # of veteran affairs and on-the-job training apprenticeship renewals | 86 | 86 | 88 | |

Education



| IPU | Performance Measure Name | Fiscal Year 2020 Actual | Fiscal Year 2021 Budget | Fiscal Year 2022 Governor's Recommended |
|-----------------|--|-------------------------|-------------------------|---|
| | # of refurbished computers placed in schools | 1,136* | 1,850 | 2,100 |
| 95-02-02 | <i>Other Items/Student Discipline Program</i> | | | |
| | # of federal gun-free violations (students) | 4 | 5 | 4 |
| | # of reporting School Crimes Laws violations (students) | 519 | 550 | 500 |
| | # of expulsions | 26 | 30 | 25 |
| 95-02-06 | <i>Public School Transportation</i> | | | |
| | # of public school pupils transported | 124,600* | 125,000 | 125,500 |
| | # of school bus accidents related to school bus driver | 45* | 110 | 110 |
| 95-03-20 | <i>Special Needs Programs</i> | | | |
| | Prison education enrollment by institution: | | | |
| | James T. Vaughn Correctional Center | 684* | 940 | 940 |
| | Sussex Correctional Institution | 541* | 870 | 870 |
| | Delores J. Baylor Women's Correctional Institution | 318* | 550 | 550 |
| | Howard R. Young Correctional Institution | 439* | 615 | 615 |
| | # of inmates participating in the following prison education services: | | | |
| | Adult Basic Education/GED | 608* | 850 | 850 |
| | James H. Groves High School | 184* | 190 | 190 |
| | Life Skills | 304* | 490 | 490 |
| | Vocational | 889* | 1,440 | 1,440 |

Education



| IPU | Performance Measure Name | Fiscal Year 2020 Actual | Fiscal Year 2021 Budget | Fiscal Year 2022 Governor's Recommended |
|-----------------|--|-------------------------|-------------------------|---|
| 95-03-30 | <i>Driver Training</i> | | | |
| | # of students completing the Driver Education program: | | | |
| | public | 10,568 | 11,400 | 11,400 |
| | summer | 416* | 1,000 | 1,000 |
| | non-public | 918 | 1,250 | 1,250 |
| 95-03-40 | <i>Scholarships</i> | | | |
| | # of recipients: | | | |
| | Scholarship Incentive Program | 978 | 1,000 | 1,000 |
| | Student Excellence Equals Degree | 1,969 | 2,000 | 2,100 |
| | Inspire | 609 | 680 | 800 |

*Figures were impacted by the COVID-19 pandemic.