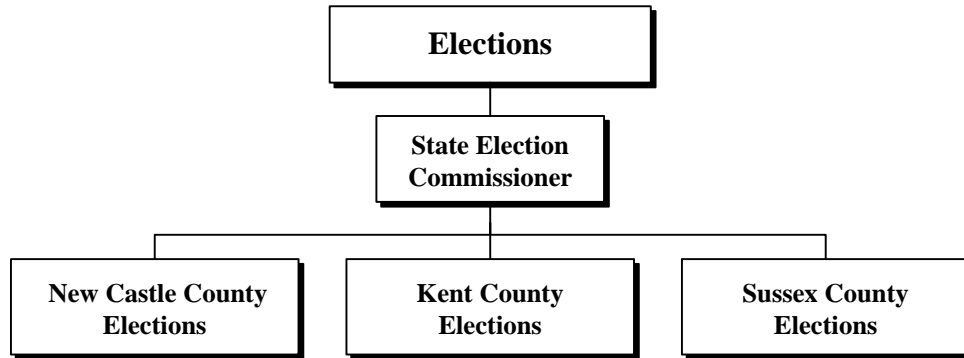
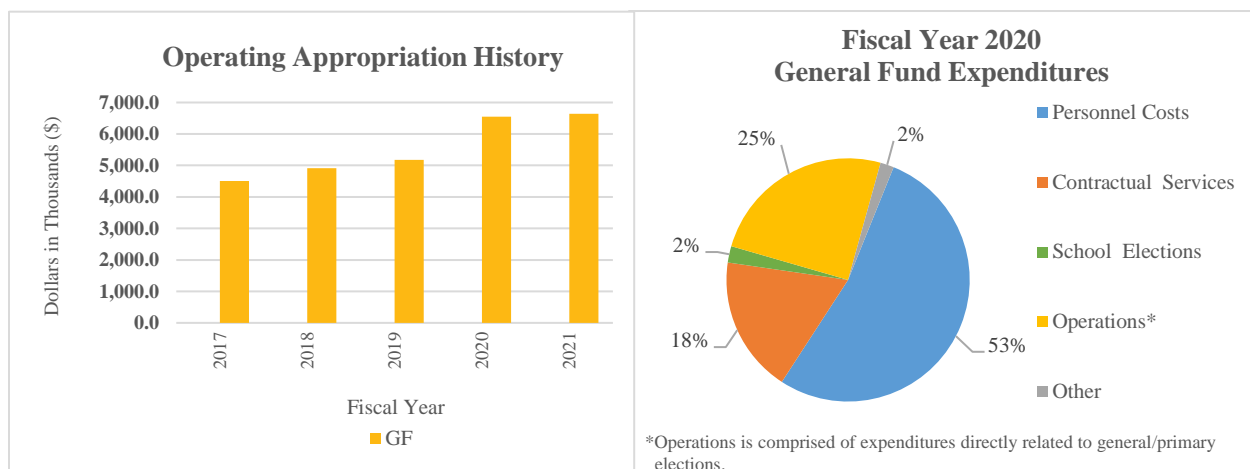


Elections

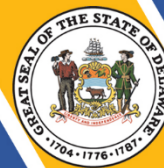


At a Glance

- Ensure the standard administration of Delaware election laws;
- Conduct all the elections in the State, including School Board and Referenda, Municipal, Special, Presidential and State Primary, and General Elections;
- Use technology to improve services to Delaware residents here and abroad;
- Register all eligible Delaware residents who submit a complete and accurate voter registration application and remove ineligible voters from the list of registered voters; and
- Educate the public regarding the elections process, and the use of the State's voting equipment, and Delaware's voter portal, ivote.de.gov.



Elections



Overview

The mission of the Department of Elections is to provide a standardized, transparent, secure and accurate election system for the residents of Delaware. The department provides voter registration services to residents, including voting (polling locations and absentee ballot options), campaign finance reports, and other elections information.

Each county has an election office that is responsible for facilitating primary, general, school, special and municipal elections within the county.

On the Web

For more information, visit elections.delaware.gov.

Performance Measures

IPU	Performance Measure Name	Fiscal Year 2020 Actual	Fiscal Year 2021 Budget**	Fiscal Year 2022 Governor's Recommended
70-01-01	<i>State Election Commissioner</i>			
	# of committees	2,900	2,750	3,000
	# of requests for campaign finance assistance	7,000	5,250	5,500
70-02-01	<i>New Castle County Elections</i>			
	Voter Registration Transactions			
	New voters	14,848	22,000	15,000
	Address changes	54,378	36,000	30,000
	Name changes	13,763	11,000	10,000
	Party changes	12,354	11,000	6,000
	Cancelled Voter Registrations			
	Deceased	3,166	5,000	6,000
	Verification programs	92	1,000	15,000
	Moved out of State	3,120	8,000	12,000
	Board actions	47	100	20
	Absentee Ballots			
	Total ballots issued	50,652	21,000	12,000
	<i>*Election year.</i>			
	School Elections			
# of referenda elections	2	5	10	
# of school board elections	0	7	5	

Elections



IPU	Performance Measure Name	Fiscal Year 2020 Actual	Fiscal Year 2021 Budget**	Fiscal Year 2022 Governor's Recommended
70-03-01	<i>Kent County Elections</i>			
	Voter Registration Transactions			
	New voters	5,160	9,129	5,960
	Address changes	17,353	10,650	8,000
	Name changes	4,862	4,257	5,616
	Party changes	3,711	3,106	4,286
	Cancelled Voter Registrations			
	Deceased	1,510	1,402	1,744
	Verification programs	22	2,852	1,200
	Moved out of State	868	916	1,003
	Absentee Ballots			
	Total ballots issued	12,599	5,800	2,500
	<i>*Election year.</i>			
	School Elections			
	# of referenda elections	1	5	5
# of school board elections	0	8	5	
70-04-01	<i>Sussex County Elections</i>			
	Voter Registration Transactions			
	New voters	10,256	11,000	10,500
	Address changes	10,863	10,000	11,000
	Name changes	1,563	1,600	2,000
	Party changes	4,377	5,000	4,500
	Cancelled Voter Registrations			
	Deceased	2,083	3,000	2,000
	Verification programs	5,446	6,000	5,500
	Moved out of State	3,789	5,000	4,000
	Board action	23	20	20
	Absentee Ballots			
	Total ballots issued	25,000	10,000	2,500
	<i>*Election year.</i>			
	School Elections			
# of referenda elections	4	5	2	
# of school board elections	0	9	3	

**Due to COVID-19 the Presidential Primary and School Board Elections were moved to Fiscal Year 2021.