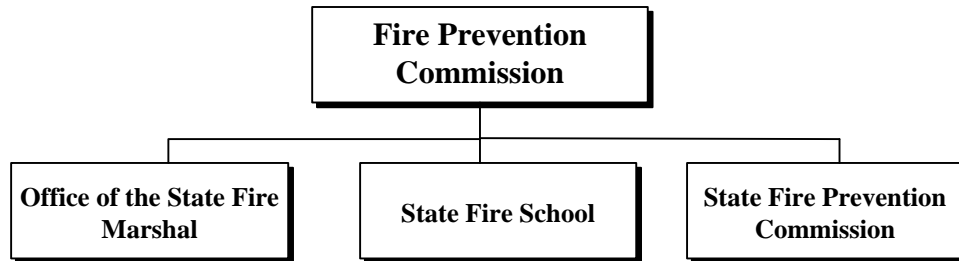
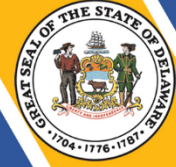
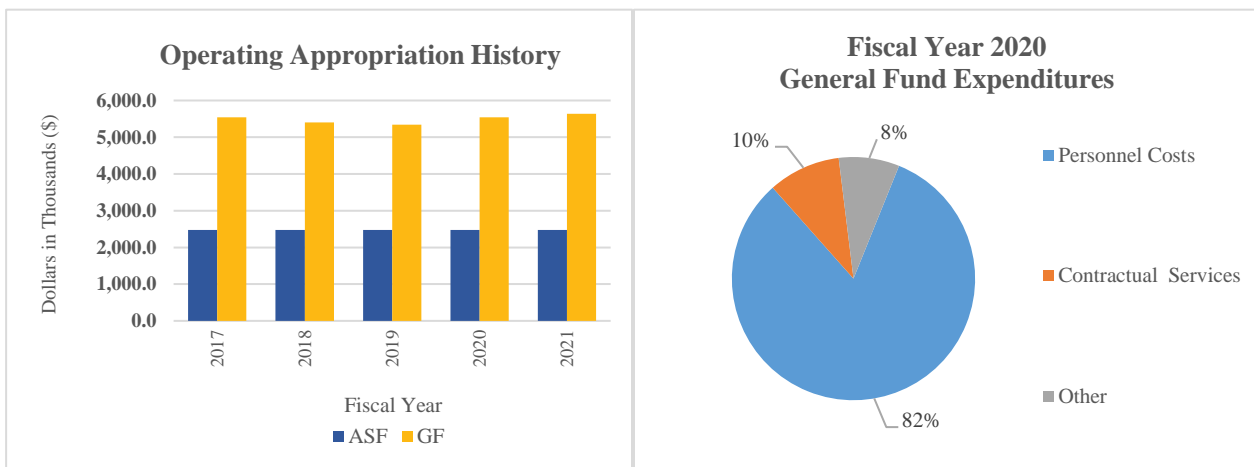


Fire Prevention Commission



At a Glance

- Protect life and property from fire for the residents of Delaware;
- Provide residents of Delaware and all visitors a fire safe environment in the home, the workplace or wherever they pursue their varied interests;
- Provide firefighters, Emergency Medical Services personnel, first responders and residents with professional instruction and training to ensure quality emergency response; and
- Improve public safety in the State.



Overview

The Office of the State Fire Marshal provides enforcement of the state fire prevention regulations; performs inspections, plan reviews, fire investigations and juvenile intervention programs; and interacts with the public.

The State Fire School provides training on a daily basis, undertakes projects and engages in activities which will serve to improve emergency response capabilities of the State's fire responders.

Fire Prevention Commission



The State Fire Prevention Commission provides leadership, policy development, planning and analysis with regard to state fire prevention regulations, ambulance regulations, fire company financial reporting, Emergency Medical Technician certification, ambulance inspections and investigatory services.

On the Web

For more information about the Office of the State Fire Marshal, visit statefiremarshal.delaware.gov.

For more information about the State Fire School, visit statefireschool.delaware.gov.

For more information about the State Fire Prevention Commission, visit statefirecommission.delaware.gov.

Performance Measures

IPU	Performance Measure Name	Fiscal Year 2020 Actual	Fiscal Year 2021 Budget	Fiscal Year 2022 Governor's Recommended
75-01-01	<i>Office of the State Fire Marshal</i>			
	Life Safety Inspections conducted per deputy	157	180	205
	Fire Code Complaints handled per deputy	62	70	80
	Average turnaround time for full plan reviews (days)	9	8	7
	Fire investigation caseload per deputy	55	65	75
	Plan review caseload per fire protection specialist	385	425	465
	Full plan reviews/ inspections:			
	New Castle County	2199	2420	2660
	Kent County	501	550	605
	Sussex County	1918	2110	2320
75-02-01	<i>State Fire School</i>			
	# of programs	674	1500	1500
	# of fire safety/injury prevention programs	184	250	250

Fire Prevention Commission



IPU	Performance Measure Name	Fiscal Year 2020 Actual	Fiscal Year 2021 Budget	Fiscal Year 2022 Governor's Recommended
	# of students:			
	fire/rescue	7245	10000	10000
	emergency care	3138	6000	6000
	industry	768	1000	1000
	hazardous materials technician program	115	500	500
	fire safety/injury prevention	49676	50000	50000
75-03-01	<i>State Fire Prevention Commission</i>			
	# of hearings - public, appeal, and grievance	21	18	18
	# of commission meetings	12	12	12
	# of fire service functions	341	300	300
	# of emergency service functions	110	75	75