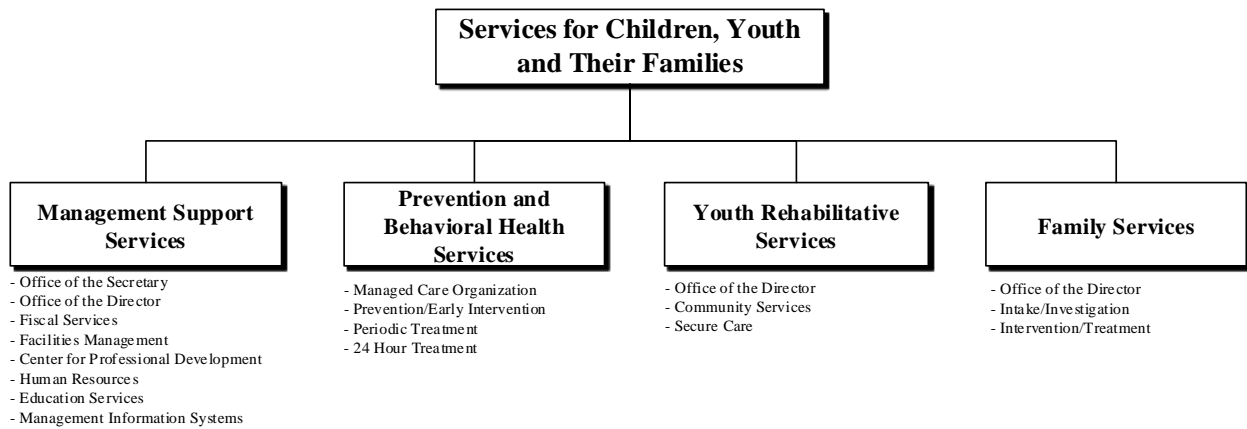
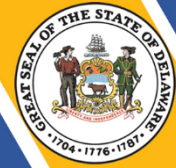
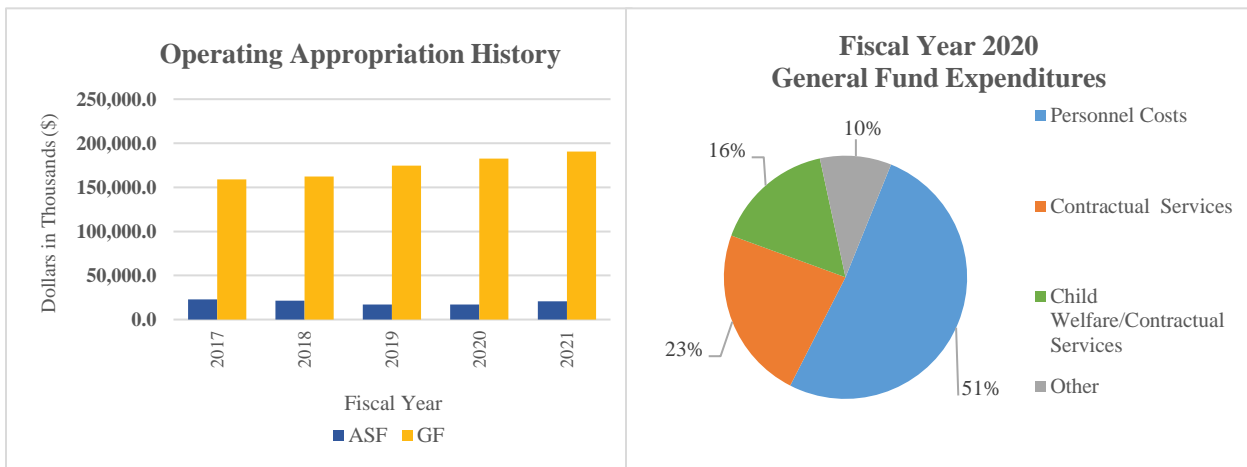


# Services for Children, Youth and Their Families

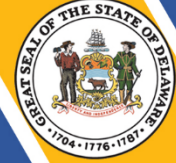


## At a Glance

- Investigate child abuse, neglect and dependency, and offer treatment services, foster care, adoption, independent living and child care licensing services;
- Provide accessible and effective behavioral and mental health services in the least restrictive environment to over 3,600 children;
- Prevent entry or reentry into one or more of the Department of Services for Children, Youth and Their Families' (DSCYF) core services by providing prevention and early intervention services;
- Provide juvenile justice services to over 1,200 youth including: detention, institutional care, probation and aftercare services; and
- Provide educational programs that enable students to continue learning while receiving departmental services.



# Services for Children, Youth and Their Families



## Overview

The mission of DSCYF is to engage families and communities to promote the safety and well-being of children through prevention, intervention, treatment and rehabilitative services. DSCYF is comprised of four major divisions: Management and Support Services; Prevention and Behavioral Health Services (PBHS); Youth Rehabilitative Services; and Family Services (YRS).

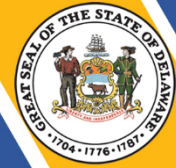
## On the Web

For more information about DSCYF, visit their website at: [kids.delaware.gov](https://kids.delaware.gov).

## Performance Measures

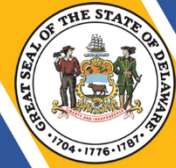
IPU	Performance Measure Name	Fiscal Year 2020 Actual	Fiscal Year 2021 Budget	Fiscal Year 2022 Governor's Recommended
<b>37-01-10</b>	<b><i>Office of the Secretary</i></b>			
	% of YRS/PBHS contracted community-based expenditures of total contracted expenditures	47	54	54
	% of children returned to DSCYF service within 12 months of case closure	23.58	26	26
	% of children in DSCYF out-of-home care	9.29	12	12
<b>37-01-15</b>	<b><i>Office of the Director</i></b>			
	% of annual revenue goal achieved	100.9	100	100
<b>37-01-20</b>	<b><i>Fiscal Services</i></b>			
	% of accounts payable transactions processed in First State Financials without the need for modification	98	95	95

# Services for Children, Youth and Their Families



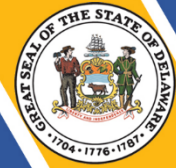
IPU	Performance Measure Name	Fiscal Year 2020 Actual	Fiscal Year 2021 Budget	Fiscal Year 2022 Governor's Recommended
<b>37-01-25</b>	<b>Facilities Management</b>			
	% of work orders completed within established time standards	94	95	95
<b>37-01-30</b>	<b>Human Resources</b>			
	# of days to fill vacancies for recruited positions (average)	78	60	60
<b>37-01-35</b>	<b>Center for Professional Development*</b>			
	% of participants who evaluate CPD trainers as "very good" or "excellent" in addressing cultural and diversity issues in DSCYF training sessions.	86	*	80
	% of DSCYF training sessions canceled for reasons other than low enrollment or business needs.	2	*	5
<i>*IPU established in FY21</i>				
<b>37-01-40</b>	<b>Education Services</b>			
	% of adjudicated students who transition from a YRS residential facility (non-detention) and maintain school or employment placement for 90 days or more as measured by transition follow-up data.	49*	70	70
	% of students in an agency school for six months or more, that increase their standard score as measured by the STAR assessment:			
	Mathematics	92	90	90
	Reading	81	90	90
	% of adjudicated students who participate in a transition	22**	90	90

# Services for Children, Youth and Their Families



IPU	Performance Measure Name	Fiscal Year 2020 Actual	Fiscal Year 2021 Budget	Fiscal Year 2022 Governor's Recommended
	meeting 30-45 days before discharge.*			
	% of students who remain continuously enrolled in a DSCYF facility for four marking periods and earn enough credits for promotion to the next grade level.	95	95	95
*Covid related restrictions at the district level created a challenge in school placements.				
** Covid restrictions effected the timing of transition meetings				
<b>37-01-50 Management Information Systems</b>				
	% of time the Department Case Management System is available during regular working hours	99.5	100	100
	% of time the Department Production Databases are available during regular working hours	99.5	99.5	99.5
<b>37-04-10 Managed Care Organization</b>				
	% timeliness for same day services for emergency intake dispositions	88.25	95	95
<b>37-04-20 Prevention/Early Intervention</b>				
	% of parents with children in the K-5 Early Intervention program that were satisfied with improvements in their children's behavioral health	Survey not disseminated in FY20 due to COVID	97	97
	% of teachers satisfied with improvements in behavior of their students in the K-5 Early Intervention program	Survey not disseminated in FY20 due to COVID	90	90

# Services for Children, Youth and Their Families



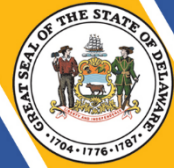
IPU	Performance Measure Name	Fiscal Year 2020 Actual	Fiscal Year 2021 Budget	Fiscal Year 2022 Governor's Recommended
<b>37-04-30</b>	<b>Periodic Treatment</b>			
	% of identified clients presenting in crisis, treated without hospital admissions	67	80	80
<b>37-04-40</b>	<b>24 Hour Treatment</b>			
	% of hospital readmissions within 30 days of discharge	14.9	10	10
	% of hospital readmissions within 180 days of discharge	27.68	25	25
	% of inpatient hospital expenditures as a total of all treatment expenditures	35	20	20
<b>37-05-30</b>	<b>Community Services</b>			
	% of Level IV recidivism	36	35	35
	% of initial probation contacts on time	72	90	90
	% of ongoing probation contacts on time*	80	100	90
	<i>*ongoing contacts on time measure no longer includes diligent efforts to contact therefore the goal is reduced for 2022. Initial probation contacts was reduced in FY21</i>			
<b>37-05-50</b>	<b>Secure Care</b>			
	% of Ferris School recidivism	55	40	40
	<b>Office of the Director</b>			
<b>37-06-10</b>	% of quality assurance case reviews completed timely *	*	*	100
	% of licensed family child care homes receiving an annual compliance visit **	67***	100	100

\*Request to add this performance measure for FY22

\*\*OCCL was transferred to DOE effective 7/1/20 therefore recommend removal of this performance measure

\*\*\*FY20 actual is low as a result of COVID. From July 1, 2019 to March 13, 2020, 100% of monthly unannounced compliance visits to family child care homes were completed. On March 13, 2020, Governor John Carney issued Executive Order 38, declaring a State of Emergency in Delaware due to the Covid-19 health crisis, closing public schools and businesses. Routine visits to child care providers were suspended.

# Services for Children, Youth and Their Families



IPU	Performance Measure Name	Fiscal Year 2020 Actual	Fiscal Year 2021 Budget	Fiscal Year 2022 Governor's Recommended
<p>In subsequent modifications by the governor's office, child care facilities, including family child care homes, were permitted to operate to serve children of first responders only. Later modifications permitted all families to access licensed child care if desired. Complaint investigation visits were completed throughout the executive order but regular monitoring visits are still suspended. Enforcement visits, pre-licensing application visits, and agreement of understanding monitoring visits are also conducted.)</p>				
<b>37-06-30</b>	<b><i>Intake/Investigation</i></b>			
	% of initial investigation contacts on time	86	100	95
<b>37-06-40</b>	<b><i>Intervention/Treatment</i></b>			
	% of timely initial treatment contacts	82	100	95
	% absence of maltreatment within 12 months	96.2	95	95
	% of exits to adoption in less than 24 months	37	37	37