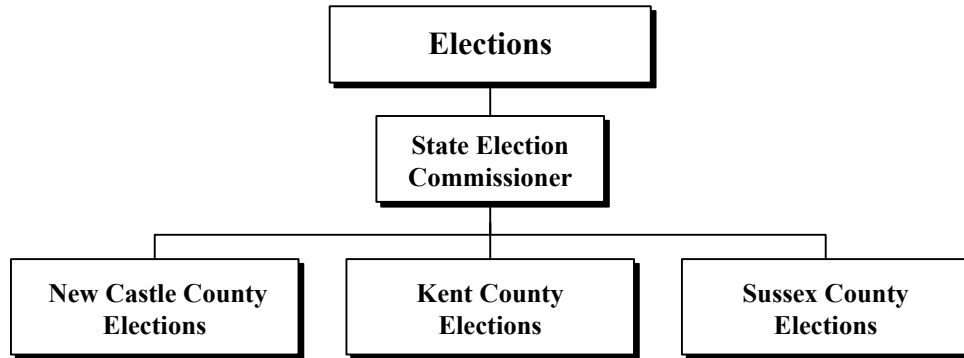
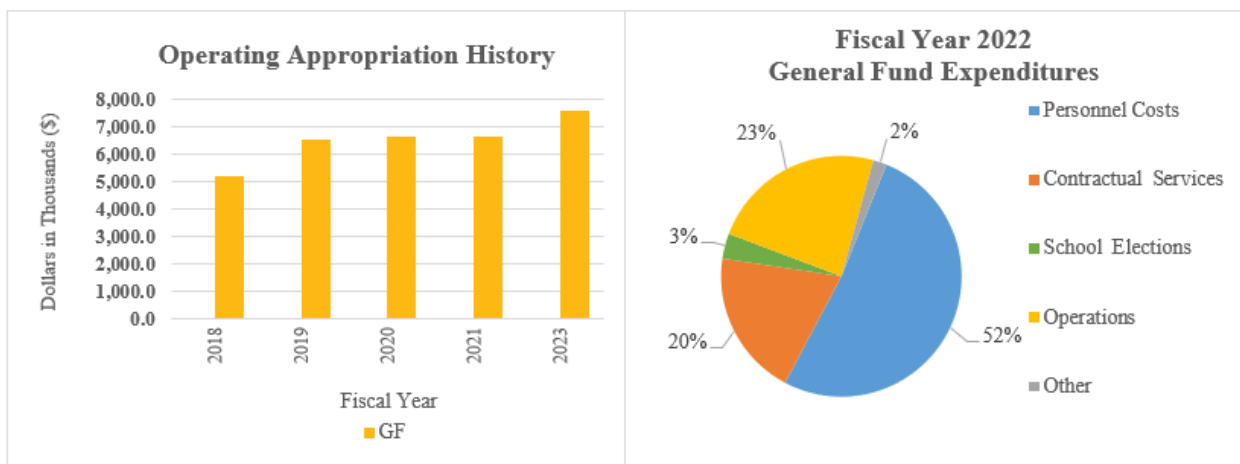


# Elections

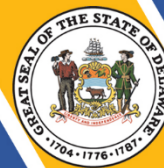


## At a Glance

- Ensure the consistent administration of Delaware’s election laws;
- Conduct all the elections in the State, including school board and referenda, municipal, special, presidential and state primary, and general elections;
- Use technology to improve services to Delaware voters here and abroad;
- Register all eligible Delaware residents who submit a complete and accurate voter registration application and remove ineligible voters from the list of registered voters; and
- Educate the public regarding the elections process, and the use of the State’s voting equipment, and Delaware’s voter portal, [ivote.de.gov](http://ivote.de.gov), and other available resources.



# Elections



## Overview

The mission of the Department of Elections is to provide a standardized, transparent, secure, and accurate election system for the residents of Delaware. The department provides voter registration services to residents, including voting (Election Day polling places, early voting locations, and absentee voting options), campaign finance reporting and enforcement, and other elections and voter registration-related information.

The Department's offices in each county are responsible for facilitating primary, general, school, special and municipal elections within the county.

## On the Web

For more information, visit [elections.delaware.gov](https://elections.delaware.gov).

## Performance Measures

IPU	Performance Measure Name	Fiscal Year 2022 Actual	Fiscal Year 2023 Budget	Fiscal Year 2024 Governor's Recommended
<b>70-01-01</b>	<b><i>State Election Commissioner</i></b>			
	# of committees	3,000	3,702	4,442
	# of requests for campaign finance assistance	5,500	8,250	9,900
<b>70-02-01</b>	<b><i>New Castle County Elections</i></b>			
	<b>Voter Registration Transactions</b>			
	New voters	19,955	21,978	23,077
	Address changes	56,992	93,426	98,097
	Name changes	14,092	19,643	20,625
	Party changes	7,533	19,155	20,113
	<b>Cancelled Voter Registrations</b>			
	Deceased	2,721	5,156	5,414
	Verification programs	0	0	0
	Moved out of State	5,417	5,959	6,555
	Board actions	0	85	89
	<b>Absentee and Vote by Mail (VBM) Ballots</b>			
	Total absentee ballots issued	976	25,421	27,963
	Total VBM ballots issued	0	1,141	0
	<i>*Election year</i>			
	<b>School Elections</b>			
# of referenda elections	1	5	5	
# of school board elections	3	5	5	

# Elections



IPU	Performance Measure Name	Fiscal Year 2022 Actual	Fiscal Year 2023 Budget	Fiscal Year 2024 Governor's Recommended
<b>70-03-01</b>	<b><i>Kent County Elections</i></b>			
	<b>Voter Registration Transactions</b>			
	New voters	5,477	5,751	6,025
	Address changes	17,091	17,945	18,800
	Name changes	3,192	3,352	3,511
	Party changes	1,782	1,871	1,960
	<b>Cancelled Voter Registrations</b>			
	Deceased	1,966	2,064	2,163
	Verification programs	0	0	0
	Moved out of State	1,732	1,819	1,905
	<b>Absentee and Vote by Mail (VBM) Ballots</b>			
	Total absentee ballots issued	78	8,250	9,075
	Total VBM ballots issued	0	218	0
	<i>*Election year</i>			
	<b>School Elections</b>			
	# of referenda elections	1	5	5
	# of school board elections	5	5	5
<b>70-04-01</b>	<b><i>Sussex County Elections</i></b>			
	<b>Voter Registration Transactions</b>			
	New voters	10,577	17,196	18,056
	Address changes	21,197	25,112	26,378
	Name changes	3,210	4,824	5,065
	Party changes	4,445	5,000	5,250
	<b>Cancelled Voter Registrations</b>			
	Deceased	3,643	7,196	7,556
	Verification programs	0	0	0
	Moved out of State	2,176	6,244	6,556
	<b>Absentee and Vote by Mail (VBM) Ballots</b>			
	Total ballots issued	17	18,342	20,176
	Total VBM ballots issued	0	676	0
	<i>*Election year</i>			
	<b>School Elections</b>			
	# of referenda elections	0	1	2
	# of school board elections	5	6	6