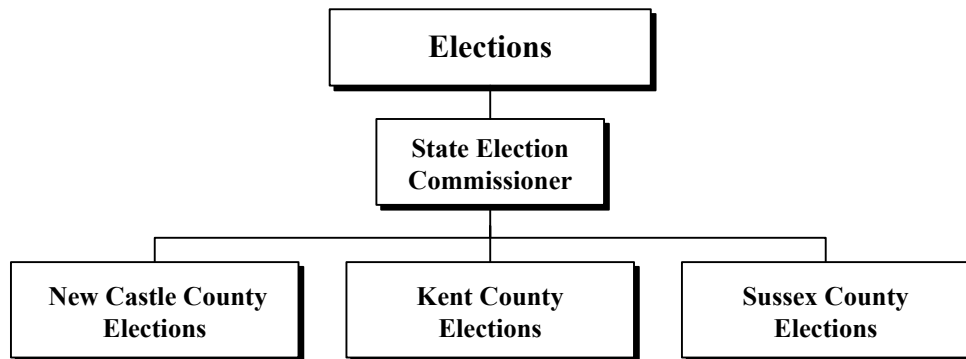
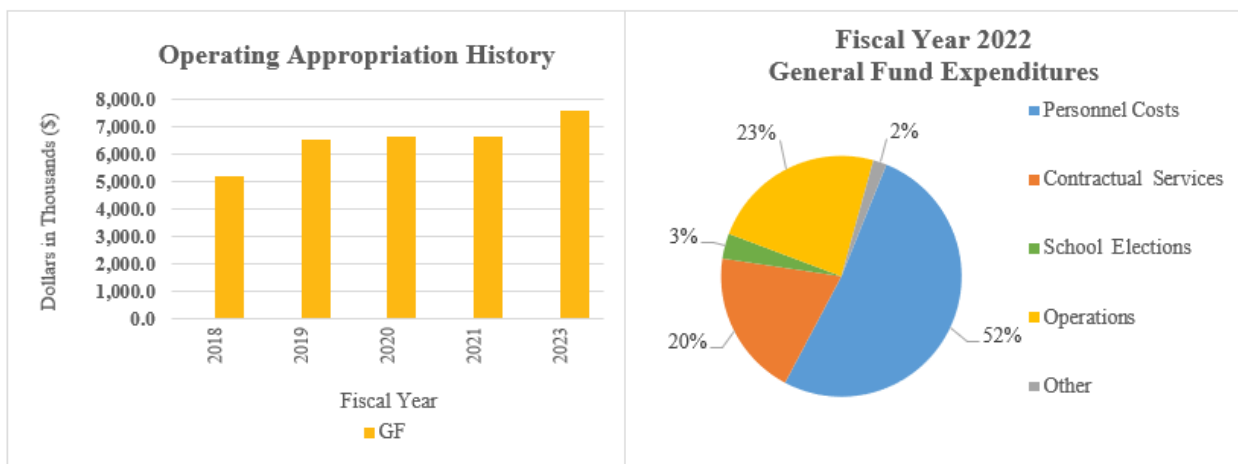


# Elections



## At a Glance

- Ensure the consistent administration of Delaware's election laws;
- Conduct all the elections in the State, including school board and referenda, municipal, special, presidential and state primary, and general elections;
- Use technology to improve services to Delaware voters here and abroad;
- Register all eligible Delaware residents who submit a complete and accurate voter registration application and remove ineligible voters from the list of registered voters; and
- Educate the public regarding the elections process, and the use of the State's voting equipment, and Delaware's voter portal, [ivote.de.gov](https://ivote.de.gov), and other available resources.



# Elections



## Overview

The mission of the Department of Elections is to provide a standardized, transparent, secure, and accurate election system for the residents of Delaware. The department provides voter registration services to residents, including voting (Election Day polling places, early voting locations, and absentee voting options), campaign finance reporting and enforcement, and other elections and voter registration-related information.

The Department's offices in each county are responsible for facilitating primary, general, school, special and municipal elections within the county.

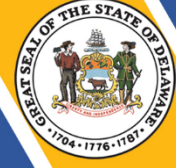
## On the Web

For more information, visit [elections.delaware.gov](https://elections.delaware.gov).

## Performance Measures

IPU	Performance Measure Name	Fiscal Year 2022 Actual	Fiscal Year 2023 Budget*	Fiscal Year 2024 Governor's Recommended
70-01-01	<b>State Election Commissioner</b>			
	# of committees	3,000	3,702	4,442
	# of requests for campaign finance assistance	5,500	8,250	9,900
70-02-01	<b>New Castle County Elections</b>			
	<b>Voter Registration Transactions</b>			
	New voters	19,955	21,978	23,077
	Address changes	56,992	93,426	98,097
	Name changes	14,092	19,643	20,625
	Party changes	7,533	19,155	20,113
	<b>Cancelled Voter Registrations</b>			
	Deceased	2,721	5,156	5,414
	Verification programs	15,000	27,897	29,292
	Moved out of State	5,417	5,959	6,555
	<b>Absentee and Vote by Mail (VBM) Ballots</b>			
	Total absentee ballots issued	976	25,421	27,963
	Total VBM ballots issued	0	1,141	0
	<b>School Elections</b>			
	# of referenda elections	1	5	5
	# of school board elections	3	5	5

# Elections



IPU	Performance Measure Name	Fiscal Year 2022 Actual	Fiscal Year 2023 Budget*	Fiscal Year 2024 Governor's Recommended
70-03-01	<b>Kent County Elections</b>			
	<b>Voter Registration Transactions</b>			
	New voters	5,477	5,751	6,025
	Address changes	17,091	17,945	18,800
	Name changes	3,192	3,352	3,511
	Party changes	1,782	1,871	1,960
	<b>Cancelled Voter Registrations</b>			
	Deceased	1,966	2,064	2,163
	Verification programs	0	0	0
	Moved out of State	1,732	1,819	1,905
	<b>Absentee and Vote by Mail (VBM) Ballots</b>			
	Total absentee ballots issued	78	8,250	9,075
	Total VBM ballots issued	0	218	0
	<b>School Elections</b>			
	# of referenda elections	1	5	5
	# of school board elections	5	5	5
70-04-01	<b>Sussex County Elections</b>			
	<b>Voter Registration Transactions</b>			
	New voters	10,577	17,196	18,056
	Address changes	21,197	25,112	26,378
	Name changes	3,210	4,824	5,065
	Party changes	4,445	5,000	5,250
	<b>Cancelled Voter Registrations</b>			
	Deceased	3,643	7,196	7,556
	Verification programs	0	0	0
	Moved out of State	2,176	6,244	6,556
	<b>Absentee and Vote by Mail (VBM) Ballots</b>			
	Total ballots issued	17	18,342	20,176
	Total VBM ballots issued	0	676	0
	<b>School Elections</b>			
	# of referenda elections	0	1	2
	# of school board elections	5	6	6
* Election year				

**ELECTIONS  
DEPARTMENT SUMMARY**

70-00-00

Appropriation Units	POSITIONS				DOLLARS			
	FY 2022	FY 2023	FY 2024	FY 2024	FY 2022	FY 2023	FY 2024	FY 2024
	Actual	Budget	Request	Recommend	Actual	Budget	Request	Recommend
<b>State Election Commissioner</b>								
General Fund	42.0	43.0	46.0	44.0	4,916.8	5,744.4	8,510.5	6,080.1
Appropriated Special Fund								
Non-Approp. Special Fund					31.8			
	42.0	43.0	46.0	44.0	4,948.6	5,744.4	8,510.5	6,080.1
<b>New Castle County Elections</b>								
General Fund					798.7	735.4	1,887.5	735.4
Appropriated Special Fund								
Non-Approp. Special Fund								
	0.0	0.0	0.0	0.0	798.7	735.4	1,887.5	735.4
<b>Kent County Elections</b>								
General Fund					304.1	602.1	1,362.3	606.8
Appropriated Special Fund								
Non-Approp. Special Fund								
	0.0	0.0	0.0	0.0	304.1	602.1	1,362.3	606.8
<b>Sussex County Elections</b>								
General Fund					115.6	507.5	876.6	511.6
Appropriated Special Fund								
Non-Approp. Special Fund								
	0.0	0.0	0.0	0.0	115.6	507.5	876.6	511.6
<b>TOTAL</b>								
General Fund	42.0	43.0	46.0	44.0	6,135.2	7,589.4	12,636.9	7,933.9
Appropriated Special Fund								
Non-Approp. Special Fund					31.8			
	42.0	43.0	46.0	44.0	6,167.0	7,589.4	12,636.9	7,933.9

**Elections**  
**State Election Commissioner**  
**State Election Commissioner**  
**Internal Program Unit Summary**

70-01-01								
LINES	FY 2022 Actual	FY 2023 Budget	FY 2024 Request	FY 2024 Base	Inflation & Volume Adjustment	Structural Changes	Enhance- ments	FY 2024 Recommend
<b>Personnel Costs</b>								
General Fund	3,019.6	3,620.6	4,053.6	3,765.4			174.5	3,939.9
Appropriated Special Fund								
Non-Approp. Special Fund								
	3,019.6	3,620.6	4,053.6	3,765.4			174.5	3,939.9
<b>Travel</b>								
General Fund	0.1	0.1	0.1	0.1				0.1
Appropriated Special Fund								
Non-Approp. Special Fund								
	0.1	0.1	0.1	0.1				0.1
<b>Contractual Services</b>								
General Fund	438.8	452.6	453.8	452.6	16.4			469.0
Appropriated Special Fund								
Non-Approp. Special Fund	31.8							
	470.6	452.6	453.8	452.6	16.4			469.0
<b>Energy</b>								
General Fund	9.3	9.7	9.7	9.7				9.7
Appropriated Special Fund								
Non-Approp. Special Fund								
	9.3	9.7	9.7	9.7				9.7
<b>Supplies and Materials</b>								
General Fund	5.9	9.4	9.4	9.4				9.4
Appropriated Special Fund								
Non-Approp. Special Fund								
	5.9	9.4	9.4	9.4				9.4
<b>One-Time</b>								
General Fund	39.2							
Appropriated Special Fund								
Non-Approp. Special Fund								
	39.2	0.0	0.0	0.0				0.0
<b>Operations</b>								
General Fund	2.9							
Appropriated Special Fund								
Non-Approp. Special Fund								
	2.9	0.0	0.0	0.0				0.0
<b>Primary and General Election</b>								
General Fund			2,203.8					
Appropriated Special Fund								
Non-Approp. Special Fund								
	0.0	0.0	2,203.8	0.0				0.0

**Elections**  
**State Election Commissioner**  
**State Election Commissioner**  
**Internal Program Unit Summary**

70-01-01								
LINES	FY 2022 Actual	FY 2023 Budget	FY 2024 Request	FY 2024 Base	Inflation & Volume Adjustment	Structural Changes	Enhance- ments	FY 2024 Recommend
<b>Technology Development</b>								
General Fund	24.1	20.0	148.1	20.0				20.0
Appropriated Special Fund								
Non-Approp. Special Fund								
	24.1	20.0	148.1	20.0				20.0
<b>Voter Purging</b>								
General Fund	15.0	15.0	15.0	15.0				15.0
Appropriated Special Fund								
Non-Approp. Special Fund								
	15.0	15.0	15.0	15.0				15.0
<b>Voting Machines</b>								
General Fund	1,361.9	1,617.0	1,617.0	1,617.0				1,617.0
Appropriated Special Fund								
Non-Approp. Special Fund								
	1,361.9	1,617.0	1,617.0	1,617.0				1,617.0
<b>TOTAL</b>								
General Fund	4,916.8	5,744.4	8,510.5	5,889.2	16.4		174.5	6,080.1
Appropriated Special Fund								
Non-Approp. Special Fund	31.8							
	4,948.6	5,744.4	8,510.5	5,889.2	16.4		174.5	6,080.1
<b>IPU REVENUES</b>								
General Fund		29.0	29.0	29.0				29.0
Appropriated Special Fund								
Non-Approp. Special Fund	1,034.4							
	1,034.4	29.0	29.0	29.0				29.0
<b>POSITIONS</b>								
General Fund	42.0	43.0	46.0	43.0			1.0	44.0
Appropriated Special Fund								
Non-Approp. Special Fund								
	42.0	43.0	46.0	43.0			1.0	44.0

**BASE, INFLATION, STRUCTURAL CHANGES, ENHANCEMENTS AND ONE-TIME ITEMS**

- Recommend inflation and volume adjustments of \$1.2 in Contractual Services for lease obligation; \$7.1 in Contractual Services to reflect increase in fleet operating costs; and \$8.1 in Contractual Services to reflect increase in messenger services operating costs.
- Recommend enhancement of \$174.5 in Personnel Costs and 1.0 FTE Deputy Attorney General to reflect workload. Do not recommend additional enhancements of \$113.7 in Personnel Costs and 2.0 FTEs.
- Recommend one-time funding of \$108.0 in Technology for agency computer replacements and \$439.0 in Presidential Primary to reflect projected expenditures in the Fiscal Year 2024 Supplemental One-Time Appropriations Act. Do not recommend additional one-time funding of \$1,764.8 in Early Voting and \$20.1 in Technology.

**Elections**  
**New Castle County Elections**  
**New Castle County Elections**  
**Internal Program Unit Summary**

70-02-01					Inflation			
LINES	FY 2022 Actual	FY 2023 Budget	FY 2024 Request	FY 2024 Base	& Volume Adjustment	Structural Changes	Enhance- ments	FY 2024 Recommend
<b>Travel</b>								
General Fund	0.7	6.0	6.0	6.0				6.0
Appropriated Special Fund								
Non-Approp. Special Fund								
	0.7	6.0	6.0	6.0				6.0
<b>Contractual Services</b>								
General Fund	481.8	498.3	656.9	498.3				498.3
Appropriated Special Fund								
Non-Approp. Special Fund								
	481.8	498.3	656.9	498.3				498.3
<b>Energy</b>								
General Fund	34.1	46.4	46.4	46.4				46.4
Appropriated Special Fund								
Non-Approp. Special Fund								
	34.1	46.4	46.4	46.4				46.4
<b>Supplies and Materials</b>								
General Fund	7.7	7.7	7.7	7.7				7.7
Appropriated Special Fund								
Non-Approp. Special Fund								
	7.7	7.7	7.7	7.7				7.7
<b>Operations</b>								
General Fund	99.2							
Appropriated Special Fund								
Non-Approp. Special Fund								
	99.2	0.0	0.0	0.0				0.0
<b>Primary and General Election</b>								
General Fund			993.5					
Appropriated Special Fund								
Non-Approp. Special Fund								
	0.0	0.0	993.5	0.0				0.0
<b>School Elections</b>								
General Fund	175.2	177.0	177.0	177.0				177.0
Appropriated Special Fund								
Non-Approp. Special Fund								
	175.2	177.0	177.0	177.0				177.0
<b>TOTAL</b>								
General Fund	798.7	735.4	1,887.5	735.4				735.4
Appropriated Special Fund								
Non-Approp. Special Fund								
	798.7	735.4	1,887.5	735.4				735.4

**Elections**  
**New Castle County Elections**  
**New Castle County Elections**  
**Internal Program Unit Summary**

70-02-01					Inflation			
LINES	FY 2022 Actual	FY 2023 Budget	FY 2024 Request	FY 2024 Base	& Volume Adjustment	Structural Changes	Enhance- ments	FY 2024 Recommend
<b>IPU REVENUES</b>								
General Fund								
Appropriated Special Fund								
Non-Approp. Special Fund								
	0.0	0.0	0.0	0.0				0.0
<b>POSITIONS</b>								
General Fund								
Appropriated Special Fund								
Non-Approp. Special Fund								
	0.0	0.0	0.0	0.0				0.0

**BASE, INFLATION, STRUCTURAL CHANGES, ENHANCEMENTS AND ONE-TIME ITEMS**

- Do not recommend enhancement of \$158.6 in Contractual Services.
- Recommend one-time funding of \$993.5 in Presidential Primary in the Fiscal Year 2024 Supplemental One-Time Appropriations Act to reflect projected expenditures.



**Elections**  
**Kent County Elections**  
**Kent County Elections**  
**Internal Program Unit Summary**

70-03-01								
LINES	FY 2022 Actual	FY 2023 Budget	FY 2024 Request	FY 2024 Base	Inflation & Volume Adjustment	Structural Changes	Enhance- ments	FY 2024 Recommend
<b>Contractual Services</b>								
General Fund	215.1	526.9	535.5	526.9	4.7			531.6
Appropriated Special Fund								
Non-Approp. Special Fund								
	<u>215.1</u>	<u>526.9</u>	<u>535.5</u>	<u>526.9</u>	<u>4.7</u>			<u>531.6</u>
<b>Energy</b>								
General Fund	13.5	33.9	33.9	33.9				33.9
Appropriated Special Fund								
Non-Approp. Special Fund								
	<u>13.5</u>	<u>33.9</u>	<u>33.9</u>	<u>33.9</u>				<u>33.9</u>
<b>Supplies and Materials</b>								
General Fund	3.4	3.5	3.5	3.5				3.5
Appropriated Special Fund								
Non-Approp. Special Fund								
	<u>3.4</u>	<u>3.5</u>	<u>3.5</u>	<u>3.5</u>				<u>3.5</u>
<b>Primary and General Election</b>								
General Fund			751.6					
Appropriated Special Fund								
Non-Approp. Special Fund								
	<u>0.0</u>	<u>0.0</u>	<u>751.6</u>	<u>0.0</u>				<u>0.0</u>
<b>School Elections</b>								
General Fund	72.1	37.8	37.8	37.8				37.8
Appropriated Special Fund								
Non-Approp. Special Fund								
	<u>72.1</u>	<u>37.8</u>	<u>37.8</u>	<u>37.8</u>				<u>37.8</u>
<b>TOTAL</b>								
General Fund	304.1	602.1	1,362.3	602.1	4.7			606.8
Appropriated Special Fund								
Non-Approp. Special Fund								
	<u>304.1</u>	<u>602.1</u>	<u>1,362.3</u>	<u>602.1</u>	<u>4.7</u>			<u>606.8</u>
<b>IPU REVENUES</b>								
General Fund	0.7							
Appropriated Special Fund								
Non-Approp. Special Fund								
	<u>0.7</u>	<u>0.0</u>	<u>0.0</u>	<u>0.0</u>				<u>0.0</u>

**Elections**  
**Kent County Elections**  
**Kent County Elections**  
**Internal Program Unit Summary**

<b>70-03-01</b>					<b>Inflation</b>			
	<b>FY 2022</b>	<b>FY 2023</b>	<b>FY 2024</b>	<b>FY 2024</b>	<b>&amp; Volume</b>	<b>Structural</b>	<b>Enhance-</b>	<b>FY 2024</b>
<b>LINES</b>	<b>Actual</b>	<b>Budget</b>	<b>Request</b>	<b>Base</b>	<b>Adjustment</b>	<b>Changes</b>	<b>ments</b>	<b>Recommend</b>
<b>POSITIONS</b>								
General Fund								
Appropriated Special Fund								
Non-Approp. Special Fund								
	<u>0.0</u>	<u>0.0</u>	<u>0.0</u>	<u>0.0</u>				<u>0.0</u>

**BASE, INFLATION, STRUCTURAL CHANGES, ENHANCEMENTS AND ONE-TIME ITEMS**

- Recommend inflation and volume adjustments of \$3.8 in Contractual Services to reflect increase in fleet operating costs; and \$0.9 in Contractual Services to reflect operating cost increases for messenger services.
- Do not recommend enhancement of \$8.6 in Contractual Services.
- Recommend one-time funding of \$751.6 in Presidential Primary in the Fiscal Year 2024 Supplemental One-Time Appropriations Act to reflect projected expenditures.

**Elections**  
**Sussex County Elections**  
**Sussex County Elections**  
**Internal Program Unit Summary**

70-04-01								
LINES	FY 2022 Actual	FY 2023 Budget	FY 2024 Request	FY 2024 Base	Inflation & Volume Adjustment	Structural Changes	Enhance- ments	FY 2024 Recommend
<b>Travel</b>								
General Fund	1.1	2.2	2.2	2.2				2.2
Appropriated Special Fund								
Non-Approp. Special Fund								
	1.1	2.2	2.2	2.2				2.2
<b>Contractual Services</b>								
General Fund	39.8	418.0	430.4	418.0	4.1			422.1
Appropriated Special Fund								
Non-Approp. Special Fund								
	39.8	418.0	430.4	418.0	4.1			422.1
<b>Energy</b>								
General Fund		20.0	20.0	20.0				20.0
Appropriated Special Fund								
Non-Approp. Special Fund								
	0.0	20.0	20.0	20.0				20.0
<b>Supplies and Materials</b>								
General Fund	14.7	12.7	12.7	12.7				12.7
Appropriated Special Fund								
Non-Approp. Special Fund								
	14.7	12.7	12.7	12.7				12.7
<b>Capital Outlay</b>								
General Fund		2.0	2.0	2.0				2.0
Appropriated Special Fund								
Non-Approp. Special Fund								
	0.0	2.0	2.0	2.0				2.0
<b>Primary and General Election</b>								
General Fund			356.7					
Appropriated Special Fund								
Non-Approp. Special Fund								
	0.0	0.0	356.7	0.0				0.0
<b>School Elections</b>								
General Fund	60.0	52.6	52.6	52.6				52.6
Appropriated Special Fund								
Non-Approp. Special Fund								
	60.0	52.6	52.6	52.6				52.6
<b>TOTAL</b>								
General Fund	115.6	507.5	876.6	507.5	4.1			511.6
Appropriated Special Fund								
Non-Approp. Special Fund								
	115.6	507.5	876.6	507.5	4.1			511.6

**Elections**  
**Sussex County Elections**  
**Sussex County Elections**  
**Internal Program Unit Summary**

70-04-01								
LINES	FY 2022 Actual	FY 2023 Budget	FY 2024 Request	FY 2024 Base	Inflation & Volume Adjustment	Structural Changes	Enhance- ments	FY 2024 Recommend
<b>IPU REVENUES</b>								
General Fund	2.2	2.0	2.0	2.0				2.0
Appropriated Special Fund								
Non-Approp. Special Fund								
	2.2	2.0	2.0	2.0				2.0
<b>POSITIONS</b>								
General Fund								
Appropriated Special Fund								
Non-Approp. Special Fund								
	0.0	0.0	0.0	0.0				0.0

**BASE, INFLATION, STRUCTURAL CHANGES, ENHANCEMENTS AND ONE-TIME ITEMS**

- Recommend inflation and volume adjustments of \$3.8 in Contractual Services for lease obligation; \$0.2 in Contractual Services to reflect increase in fleet operating costs; and \$0.1 in Contractual Services to reflect operating cost increases for messenger services.
- Do not recommend enhancement of \$8.6 in Contractual Services.
- Recommend one-time funding of \$356.7 in Presidential Primary in the Fiscal Year 2024 Supplemental One-Time Appropriations Act to reflect projected expenditures.