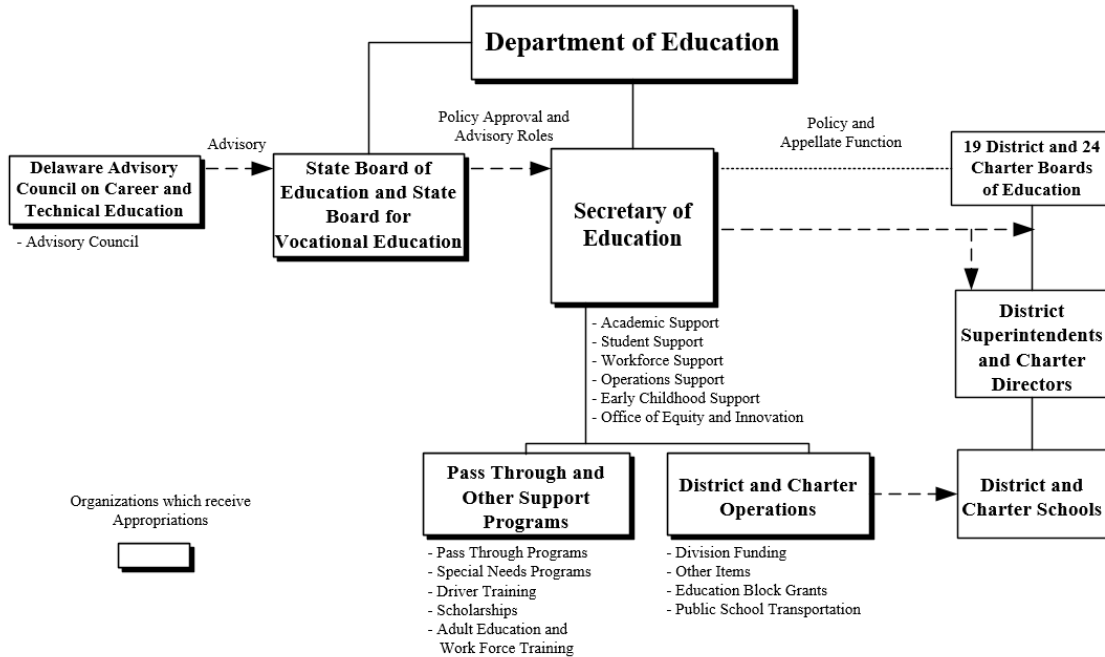
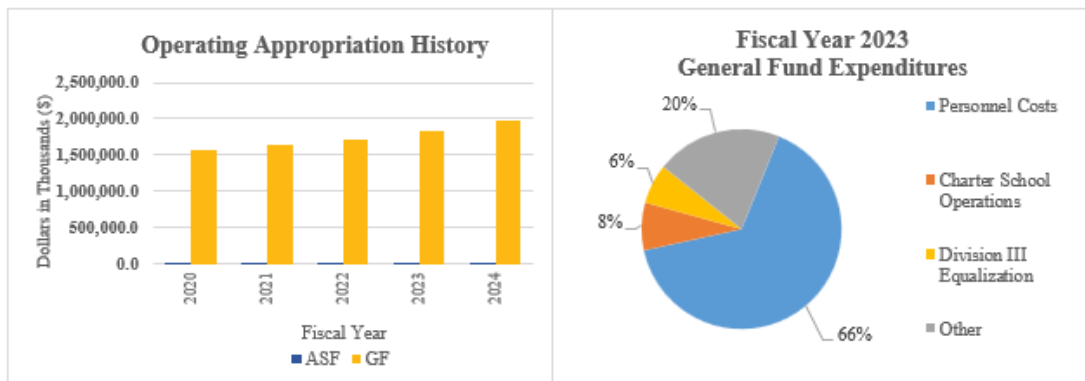


Education

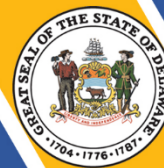


At a Glance

- Implement rigorous standards, instruction and assessments;
- Ensure equitable access to excellent educators;
- Support high quality early learning opportunities;
- Provide safe and healthy environments conducive to learning; and
- Engage and inform families, schools, districts, communities, and other agencies.



Education



Overview

In cooperation with the local boards of education, district superintendents, charter leaders, principals, school-based employees, teachers, parents and community members, the Department of Education (DOE) works to significantly improve the number of students who successfully meet college and career-readiness standards. In support of that focus, DOE ensures excellent educators for all students; supports high quality early learning opportunities; provides safe and healthy environments conducive to learning; provides school and community-based supports and enrichment opportunities, effective supports for improving the State's lowest performing schools, flexibility in meeting the needs of the student for achieving results and support to schools and districts in improving the quality of education; engages and informs families, schools, districts, communities, and other agencies; and ensures management support.

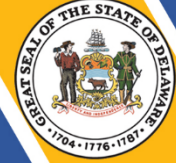
On the Web

For more information, visit doe.k12.de.us.

Performance Measures

IPU	Performance Measure Name	Fiscal Year 2023 Actual	Fiscal Year 2024 Budget	Fiscal Year 2025 Governor's Recommended
95-01-00	<i>Department of Education</i>			
	# of educator evaluation system implementations:			
	districts	19	19	19
	charter schools	23	23	24*
	# school leaders participating in administrative mentoring	99	85	85
% of Career and Technical Education concentrator students graduating	97.1	99	99	
# of private business and trade school certification renewals	105	118	118	

Education



	# of veteran affairs and on-the-job training apprenticeship renewals	91	92	95
	# of refurbished computers placed in schools	622	650	700
* We anticipate an additional charter school next year - Bryan Allen Stevenson School of Excellence (BASSE).				
95-02-02	Other Items/Student Discipline Program			
	# of federal gun-free violations (students)	6	5	5
	# of reporting School Crimes Laws violations (students)	997	550	750
	# of expulsions	27	25	20
95-02-06	Public School Transportation			
	# of public school pupils transported	124,200	125,900	125,900
	# of school bus accidents related to school bus driver	122	110	110
95-03-20	Special Needs Programs**			
	Prison education enrollment by institution:			
	James T. Vaughn Correctional Center	596	950	950
	Sussex Correctional Institution	601	880	880
	Delores J. Baylor Women's Correctional Institution	194	560	560
	Howard R. Young Correctional Institution	347	625	625
	# of offenders participating in the following prison education services:			
	Adult Basic Education/GED	539	860	860
	James H. Groves High School	174	205	205
	Life Skills	246	500	500
	Vocational	779	1,450	1,450
** Figures were impacted by the COVID-19 pandemic.				

Education



95-03-30	<i>Driver Training</i>			
	# of students completing the Driver Education program:			
	public	10,579	11,400	11,400
	summer	916	1,000	1,000
	non-public	971	1,250	1,250
95-03-40	<i>Scholarships</i>			
	# of recipients:			
	Scholarship Incentive Program	752	1,000	1,000
	Student Excellence Equals Degree (SEED)	2,903	4,365	4,779
	Inspire	1,075	1,222	1,250