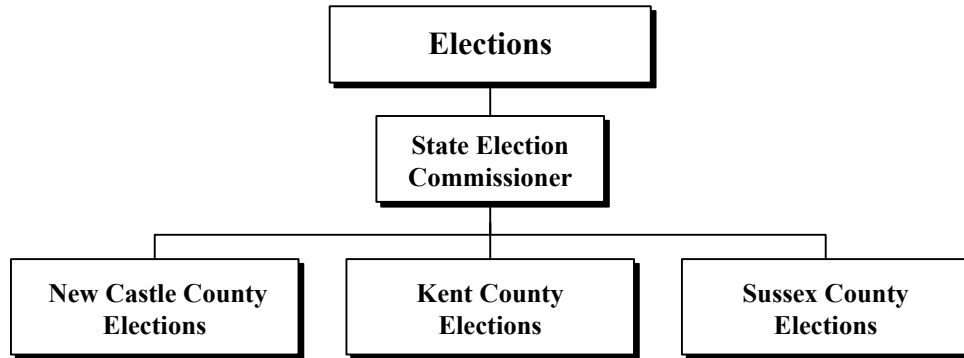
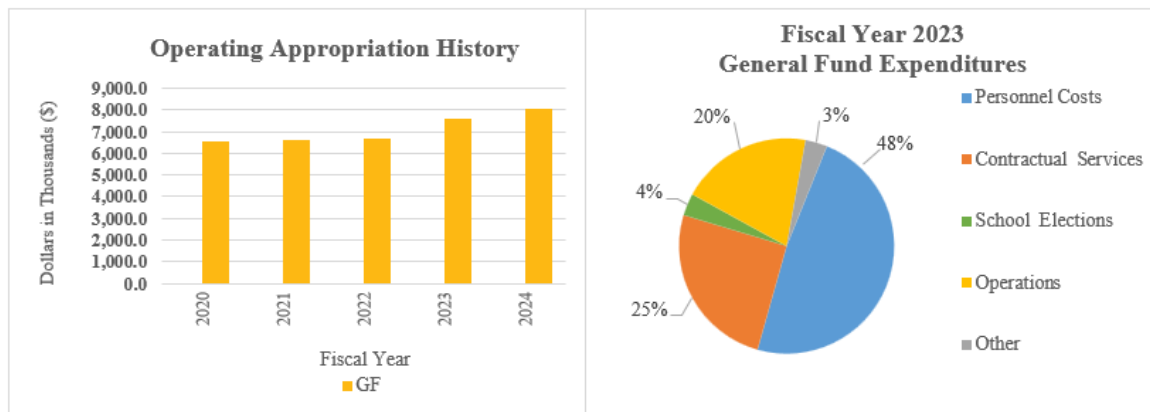


Elections

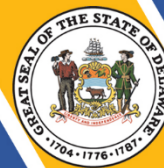


At a Glance

- Ensure the consistent administration of Delaware’s election laws;
- Conduct all the elections in the State, including school board and referenda, municipal, special, presidential and state primary, and general elections;
- Use technology to improve services to Delaware voters here and abroad;
- Register all eligible Delaware residents who submit a complete and accurate voter registration application and remove ineligible voters from the list of registered voters; and
- Educate the public regarding the elections process, and the use of the State’s voting equipment, and Delaware’s voter portal, ivote.de.gov, and other available resources.



Elections



Overview

The mission of the Department of Elections is to provide a standardized, transparent, secure, and accurate election system for the residents of Delaware. The department provides voter registration services to residents, including voting (Election Day polling places, early voting locations, and absentee voting options), campaign finance reporting and enforcement, and other elections and voter registration-related information.

The Department's offices in each county are responsible for facilitating primary, general, school, special and municipal elections within the county.

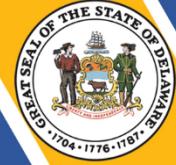
On the Web

For more information, visit elections.delaware.gov.

Performance Measures

IPU	Performance Measure Name	Fiscal Year 2023 Actual*	Fiscal Year 2024 Budget*	Fiscal Year 2025 Governor's Recommended*
70-01-01	State Election Commissioner			
	# of committees	3,500	4,442	4,664
	# of requests for campaign finance assistance	9,000	9,900	10,395
70-02-01	New Castle County Elections			
	Voter Registration Transactions			
	New voters	17,192	23,077	24,231
	Address changes	36,506	98,097	103,002
	Name changes	7,377	20,625	21,656
	Party changes	10,459	20,113	30,170
	Cancelled Voter Registrations			
	Deceased	6,146	5,414	5,685
	Moved out of State	9,598	6,555	6,883
	Absentee and Vote by Mail (VBM) Ballots			
	Total absentee ballots issued	27,355	27,963	29,361
	School Elections			
	# of referenda elections	1	5	6
# of school board elections	4	5	6	

Elections



IPU	Performance Measure Name	Fiscal Year 2023 Actual*	Fiscal Year 2024 Budget*	Fiscal Year 2025 Governor's Recommended*
70-03-01	Kent County Elections			
	Voter Registration Transactions			
	New voters	6,328	6,025	6,326
	Address changes	15,067	18,800	19,740
	Name changes	2,816	3,511	3,687
	Party changes	4,431	1,960	2,940
	Cancelled Voter Registrations			
	Deceased	2,114	2,163	2,271
	Moved out of State	2,704	1,819	1,910
	Absentee and Vote by Mail (VBM) Ballots			
	Total absentee ballots issued	8,923	9,075	9,529
	School Elections			
	# of referenda elections	2	5	5
	# of school board elections	3	5	5
70-04-01	Sussex County Elections			
	Voter Registration Transactions			
	New voters	13,336	18,056	18,959
	Address changes	19,242	26,378	27,697
	Name changes	3,602	5,065	5,318
	Party changes	6,938	5,250	7,875
	Cancelled Voter Registrations			
	Deceased	4,092	7,556	7,934
	Moved out of State	5,263	6,556	6,884
	Absentee and Vote by Mail (VBM) Ballots			
	Total ballots issued	19,567	20,176	21,185
	School Elections			
	# of referenda elections	0	2	7
	# of school board elections	6	6	7
* Election year				