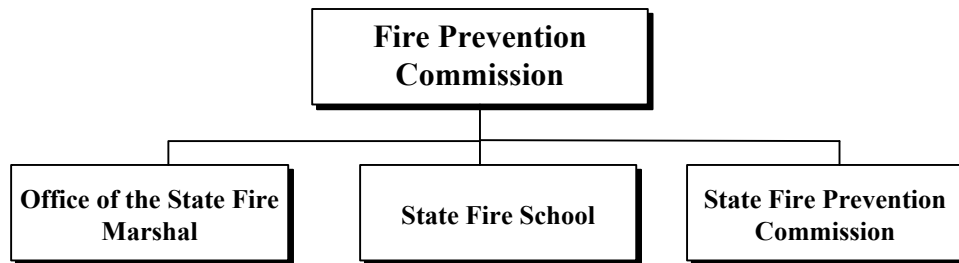
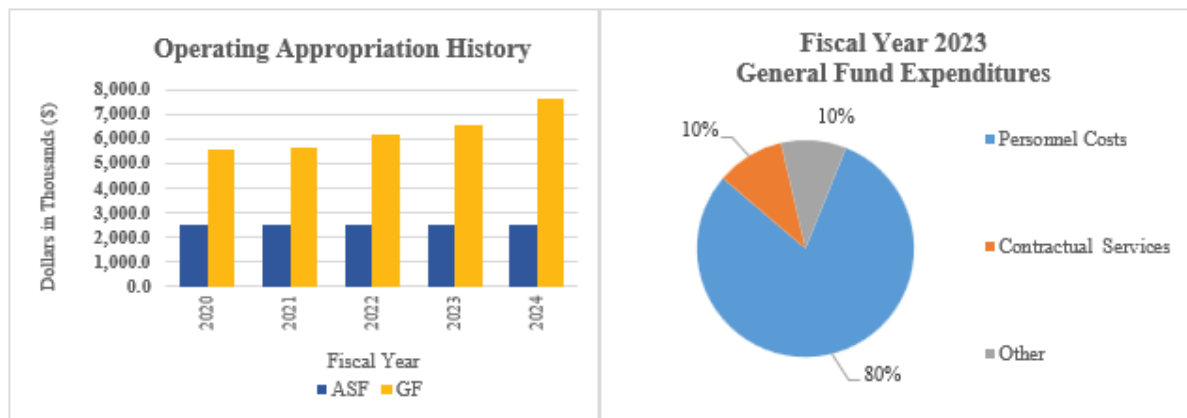


# Fire Prevention Commission



## At a Glance

- Protect life and property from fire for the residents of Delaware;
- Provide residents of Delaware and all visitors a fire safe environment in the home, the workplace or wherever they pursue their varied interests;
- Provide firefighters, Emergency Medical Services personnel, first responders and residents with professional instruction and training to ensure quality emergency response; and
- Improve public safety in the State.



## Overview

The Office of the State Fire Marshal provides enforcement of the state fire prevention regulations; performs inspections, plan reviews, fire investigations, juvenile intervention programs, and interacts with the public.

The State Fire School provides training, undertakes projects and engages in activities which will serve to improve emergency response capabilities of the State's fire and emergency responders.

The State Fire Prevention Commission provides leadership, policy development, planning, and

# Fire Prevention Commission



analysis with regard to state fire prevention regulations, ambulance regulations, fire company financial reporting, Emergency Medical Technician certification, ambulance inspections, and investigatory services.

## On the Web

For more information about the Office of the State Fire Marshal, visit [statefiremarshal.delaware.gov](http://statefiremarshal.delaware.gov).

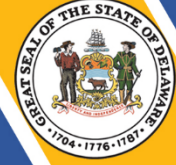
For more information about the State Fire School, visit [statefireschool.delaware.gov](http://statefireschool.delaware.gov).

For more information about the State Fire Prevention Commission, visit [statefirecommission.delaware.gov](http://statefirecommission.delaware.gov).

## Performance Measures

IPU	Performance Measure Name	Fiscal Year 2023 Actual	Fiscal Year 2024 Budget	Fiscal Year 2025 Governor's Recommended
<b>75-01-01</b>	<b><i>Office of the State Fire Marshal</i></b>			
	Life Safety Inspections conducted per deputy (13)	123	125	130
	Fire Code Complaints handled per deputy (13)	13	20	25
	Average turnaround time for full plan reviews (days)	15	15	15
	Fire investigation caseload per deputy (13)	50	60	65
	Plan review caseload per fire protection specialist	417	425	450
	Full plan reviews/ inspections:			
	New Castle County	2690	2700	2835
Kent County	825	830	870	
Sussex County	2740	2780	2920	
<b>75-02-01</b>	<b><i>State Fire School</i></b>			
	# of programs*	2371	1250	2000
	# of fire safety/injury prevention programs*	258	200	200

# Fire Prevention Commission



IPU	Performance Measure Name	Fiscal Year 2023 Actual	Fiscal Year 2024 Budget	Fiscal Year 2025 Governor's Recommended
	# of students:			
	fire/rescue	8672	10000	10000
	emergency care	5086	5000	5000
	industry	1034	1000	1000
	hazardous materials technician program	577	500	500
	fire safety/injury prevention*	28531	30000	30000
<b>75-03-01</b>	<b><i>State Fire Prevention Commission</i></b>			
	# of hearings - public, appeal, and grievance	18	18	18
	# of commission meetings	12	12	12
	# of fire service functions	300	310	300
	# of emergency service functions	75	70	75