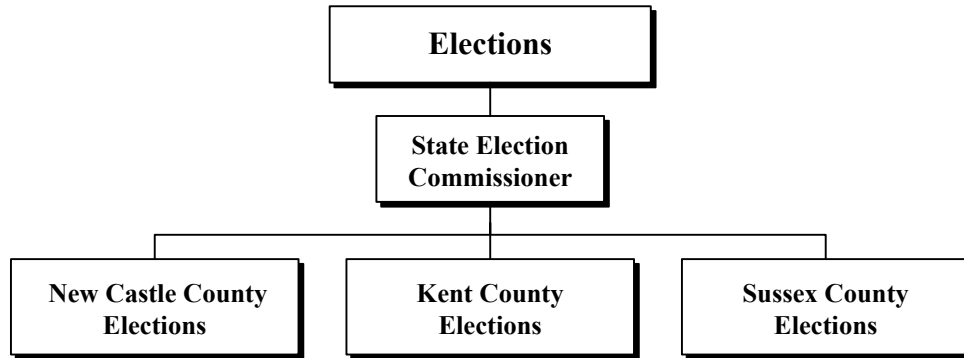
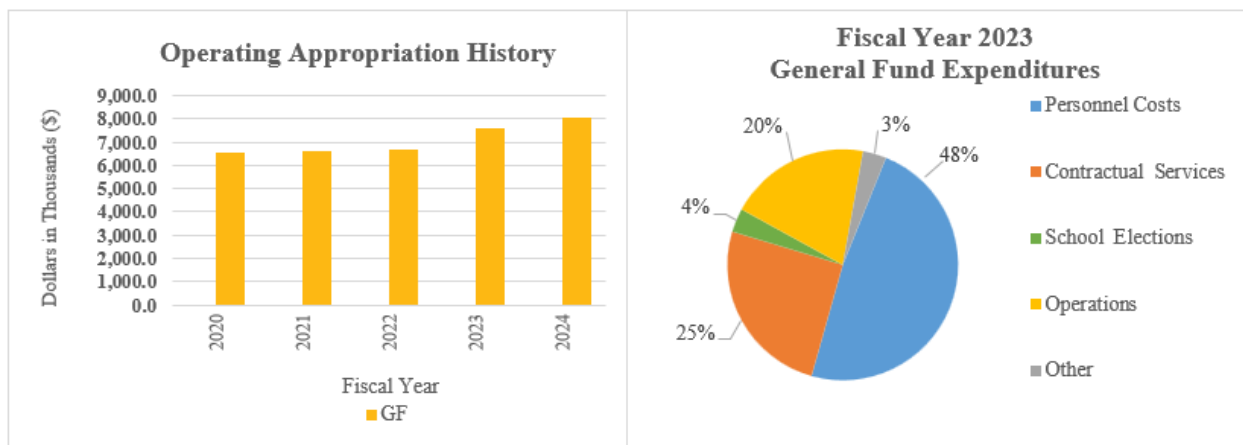


Elections

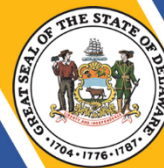


At a Glance

- Ensure the consistent administration of Delaware’s election laws;
- Conduct all the elections in the State, including school board and referenda, municipal, special, presidential and state primary, and general elections;
- Use technology to improve services to Delaware voters here and abroad;
- Register all eligible Delaware residents who submit a complete and accurate voter registration application and remove ineligible voters from the list of registered voters; and
- Educate the public regarding the elections process, and the use of the State’s voting equipment, and Delaware’s voter portal, ivote.de.gov, and other available resources.



Elections



Overview

The mission of the Department of Elections is to provide a standardized, transparent, secure, and accurate election system for the residents of Delaware. The department provides voter registration services to residents, including voting (Election Day polling places, early voting locations, and absentee voting options), campaign finance reporting and enforcement, and other elections and voter registration-related information.

The Department's offices in each county are responsible for facilitating primary, general, school, special and municipal elections within the county.

On the Web

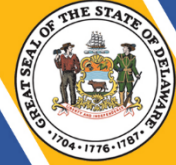
For more information, visit elections.delaware.gov.

Performance Measures

IPU	Performance Measure Name	Fiscal Year 2023 Actual*	Fiscal Year 2024 Budget*	Fiscal Year 2025 Governor's Recommended*
70-01-01	State Election Commissioner			
	# of committees	3,500	4,442	4,664
	# of requests for campaign finance assistance	9,000	9,900	10,395
70-02-01	New Castle County Elections			
	Voter Registration Transactions			
	New voters	17,192	23,077	24,231
	Address changes	36,506	98,097	103,002
	Name changes	7,377	20,625	21,656
	Party changes	10,459	20,113	30,170
	Cancelled Voter Registrations			
	Deceased	6,146	5,414	5,685
	Moved out of State	9,598	6,555	6,883
	Absentee Ballots			
	Total absentee ballots issued	27,355	27,963	29,361
	School Elections			
	# of referenda elections	1	5	6
# of school board elections	4	5	6	

* Election year

Elections



IPU	Performance Measure Name	Fiscal Year 2023 Actual*	Fiscal Year 2024 Budget*	Fiscal Year 2025 Governor's Recommended*
70-03-01	Kent County Elections			
	Voter Registration Transactions			
	New voters	6,328	6,025	6,326
	Address changes	15,067	18,800	19,740
	Name changes	2,816	3,511	3,687
	Party changes	4,431	1,960	2,940
	Cancelled Voter Registrations			
	Deceased	2,114	2,163	2,271
	Moved out of State	2,704	1,819	1,910
	Absentee Ballots			
	Total absentee ballots issued	8,923	9,075	9,529
	School Elections			
	# of referenda elections	2	5	5
	# of school board elections	3	5	5
70-04-01	Sussex County Elections			
	Voter Registration Transactions			
	New voters	13,336	18,056	18,959
	Address changes	19,242	26,378	27,697
	Name changes	3,602	5,065	5,318
	Party changes	6,938	5,250	7,875
	Cancelled Voter Registrations			
	Deceased	4,092	7,556	7,934
	Moved out of State	5,263	6,556	6,884
	Absentee Ballots			
	Total ballots issued	19,567	20,176	21,185
	School Elections			
	# of referenda elections	0	2	7
	# of school board elections	6	6	7
* Election year				

**ELECTIONS
DEPARTMENT SUMMARY**

70-00-00

Appropriation Units	POSITIONS				DOLLARS			
	FY 2023	FY 2024	FY 2025	FY 2025	FY 2023	FY 2024	FY 2025	FY 2025
	Actual	Budget	Request	Recommend	Actual	Budget	Request	Recommend
State Election Commissioner								
General Fund	43.0	46.0	46.0	46.0	5,378.3	6,194.2	14,243.7	6,913.9
Appropriated Special Fund								
Non-Approp. Special Fund					1,161.0			
	<u>43.0</u>	<u>46.0</u>	<u>46.0</u>	<u>46.0</u>	<u>6,539.3</u>	<u>6,194.2</u>	<u>14,243.7</u>	<u>6,913.9</u>
New Castle County Elections								
General Fund					755.9	742.1	3,791.5	763.0
Appropriated Special Fund								
Non-Approp. Special Fund								
	<u>0.0</u>	<u>0.0</u>	<u>0.0</u>	<u>0.0</u>	<u>755.9</u>	<u>742.1</u>	<u>3,791.5</u>	<u>763.0</u>
Kent County Elections								
General Fund					445.1	611.0	2,209.2	616.7
Appropriated Special Fund								
Non-Approp. Special Fund								
	<u>0.0</u>	<u>0.0</u>	<u>0.0</u>	<u>0.0</u>	<u>445.1</u>	<u>611.0</u>	<u>2,209.2</u>	<u>616.7</u>
Sussex County Elections								
General Fund					511.3	515.7	2,266.3	519.5
Appropriated Special Fund								
Non-Approp. Special Fund								
	<u>0.0</u>	<u>0.0</u>	<u>0.0</u>	<u>0.0</u>	<u>511.3</u>	<u>515.7</u>	<u>2,266.3</u>	<u>519.5</u>
TOTAL								
General Fund	43.0	46.0	46.0	46.0	7,090.6	8,063.0	22,510.7	8,813.1
Appropriated Special Fund								
Non-Approp. Special Fund					1,161.0			
	<u>43.0</u>	<u>46.0</u>	<u>46.0</u>	<u>46.0</u>	<u>8,251.6</u>	<u>8,063.0</u>	<u>22,510.7</u>	<u>8,813.1</u>

Elections
State Election Commissioner
State Election Commissioner
Internal Program Unit Summary

70-01-01								
LINES	FY 2023 Actual	FY 2024 Budget	FY 2025 Request	FY 2025 Base	Inflation & Volume Adjustment	Structural Changes	Enhance- ments	FY 2025 Recommend
Personnel Costs								
General Fund	3,160.6	4,053.6	4,284.0	4,284.0				4,284.0
Appropriated Special Fund								
Non-Approp. Special Fund								
	3,160.6	4,053.6	4,284.0	4,284.0				4,284.0
Travel								
General Fund	0.1	0.1	0.1	0.1				0.1
Appropriated Special Fund								
Non-Approp. Special Fund								
	0.1	0.1	0.1	0.1				0.1
Contractual Services								
General Fund	488.7	469.0	975.9	469.0	2.0		462.3	933.3
Appropriated Special Fund								
Non-Approp. Special Fund	1,105.3							
	1,594.0	469.0	975.9	469.0	2.0		462.3	933.3
Energy								
General Fund	6.4	10.1	10.1	10.1				10.1
Appropriated Special Fund								
Non-Approp. Special Fund								
	6.4	10.1	10.1	10.1				10.1
Supplies and Materials								
General Fund	7.6	9.4	9.4	9.4				9.4
Appropriated Special Fund								
Non-Approp. Special Fund	55.7							
	63.3	9.4	9.4	9.4				9.4
Operations								
General Fund	203.2							
Appropriated Special Fund								
Non-Approp. Special Fund								
	203.2							
Primary and General Election								
General Fund			5,426.0					
Appropriated Special Fund								
Non-Approp. Special Fund								
			5,426.0					
Technology Development								
General Fund	19.1	20.0	20.0	20.0				20.0
Appropriated Special Fund								
Non-Approp. Special Fund								
	19.1	20.0	20.0	20.0				20.0

Elections
State Election Commissioner
State Election Commissioner
Internal Program Unit Summary

70-01-01								
LINES	FY 2023 Actual	FY 2024 Budget	FY 2025 Request	FY 2025 Base	Inflation & Volume Adjustment	Structural Changes	Enhance- ments	FY 2025 Recommend
Voter Purging								
General Fund	15.0	15.0	15.0	15.0				15.0
Appropriated Special Fund								
Non-Approp. Special Fund								
	15.0	15.0	15.0	15.0				15.0
Voting Machines								
General Fund	1,477.6	1,617.0	3,503.2	1,617.0			25.0	1,642.0
Appropriated Special Fund								
Non-Approp. Special Fund								
	1,477.6	1,617.0	3,503.2	1,617.0			25.0	1,642.0
TOTAL								
General Fund	5,378.3	6,194.2	14,243.7	6,424.6	2.0		487.3	6,913.9
Appropriated Special Fund								
Non-Approp. Special Fund	1,161.0							
	6,539.3	6,194.2	14,243.7	6,424.6	2.0		487.3	6,913.9
IPU REVENUES								
General Fund		29.0	29.0	29.0				29.0
Appropriated Special Fund								
Non-Approp. Special Fund	9.4							
	9.4	29.0	29.0	29.0				29.0
POSITIONS								
General Fund	43.0	46.0	46.0	46.0				46.0
Appropriated Special Fund								
Non-Approp. Special Fund								
	43.0	46.0	46.0	46.0				46.0

BASE, INFLATION, STRUCTURAL CHANGES, ENHANCEMENTS AND ONE-TIME ITEMS

- Recommend inflation and volume adjustments of \$1.2 in Contractual Services for lease obligation; and \$0.8 in Contractual Services to reflect increase in fleet operating costs.
- Recommend enhancements of \$212.3 in Contractual Services for the implementation of House Bill 82 of the 152nd General Assembly; \$250.0 in Contractual Services for DTI software charges; and \$25.0 in Voting Machines for voting machine parts inventory. Do not recommend additional enhancement of \$255.7.
- Recommend one-time funding of \$3,949.6 in Early Voting Contingency and \$1,476.4 in Primary and General Elections to reflect projected expenditures, \$1,318.4 in Voting Machine Equipment for new machines and \$271.4 in Voting Machine Battery Replacement for replacement batteries in the Fiscal Year 2025 Supplemental One-Time Appropriations Act.

Elections
New Castle County Elections
New Castle County Elections
Internal Program Unit Summary

70-02-01								
LINES	FY 2023 Actual	FY 2024 Budget	FY 2025 Request	FY 2025 Base	Inflation & Volume Adjustment	Structural Changes	Enhance- ments	FY 2025 Recommend
Travel								
General Fund	3.5	6.0	6.0	6.0				6.0
Appropriated Special Fund								
Non-Approp. Special Fund								
	3.5	6.0	6.0	6.0				6.0
Contractual Services								
General Fund	492.6	498.3	729.2	498.3	20.9			519.2
Appropriated Special Fund								
Non-Approp. Special Fund								
	492.6	498.3	729.2	498.3	20.9			519.2
Energy								
General Fund	54.8	53.1	53.1	53.1				53.1
Appropriated Special Fund								
Non-Approp. Special Fund								
	54.8	53.1	53.1	53.1				53.1
Supplies and Materials								
General Fund	7.3	7.7	7.7	7.7				7.7
Appropriated Special Fund								
Non-Approp. Special Fund								
	7.3	7.7	7.7	7.7				7.7
Operations								
General Fund	14.3							
Appropriated Special Fund								
Non-Approp. Special Fund								
	14.3							
Primary and General Election								
General Fund			2,818.5					
Appropriated Special Fund								
Non-Approp. Special Fund								
			2,818.5					
School Elections								
General Fund	183.4	177.0	177.0	177.0				177.0
Appropriated Special Fund								
Non-Approp. Special Fund								
	183.4	177.0	177.0	177.0				177.0
TOTAL								
General Fund	755.9	742.1	3,791.5	742.1	20.9			763.0
Appropriated Special Fund								
Non-Approp. Special Fund								
	755.9	742.1	3,791.5	742.1	20.9			763.0

Elections
New Castle County Elections
New Castle County Elections
Internal Program Unit Summary

70-02-01					Inflation & Volume			FY 2025
LINES	FY 2023 Actual	FY 2024 Budget	FY 2025 Request	FY 2025 Base	Adjustment	Structural Changes	Enhance- ments	Recommend
IPU REVENUES								
General Fund								
Appropriated Special Fund								
Non-Approp. Special Fund								
	0.0	0.0	0.0	0.0				0.0
POSITIONS								
General Fund								
Appropriated Special Fund								
Non-Approp. Special Fund								
	0.0	0.0	0.0	0.0				0.0

BASE, INFLATION, STRUCTURAL CHANGES, ENHANCEMENTS AND ONE-TIME ITEMS

- Recommend inflation and volume adjustment of \$20.9 in Contractual Services for lease obligation.
- Do not recommend enhancement of \$150.0 in Contractual Services.
- Recommend one-time funding of \$2,818.5 in Primary and General Elections for the 2024 primary and general elections and \$80.0 in Specialty Vehicle for a new box truck in the Fiscal Year 2025 Supplemental One-Time Appropriations Act.

Elections
Kent County Elections
Kent County Elections
Internal Program Unit Summary

70-03-01								
LINES	FY 2023 Actual	FY 2024 Budget	FY 2025 Request	FY 2025 Base	Inflation & Volume Adjustment	Structural Changes	Enhance- ments	FY 2025 Recommend
Contractual Services								
General Fund	300.8	531.6	596.5	531.6	5.7			537.3
Appropriated Special Fund								
Non-Approp. Special Fund								
	300.8	531.6	596.5	531.6	5.7			537.3
Energy								
General Fund	31.5	38.1	38.1	38.1				38.1
Appropriated Special Fund								
Non-Approp. Special Fund								
	31.5	38.1	38.1	38.1				38.1
Supplies and Materials								
General Fund	1.7	3.5	3.5	3.5				3.5
Appropriated Special Fund								
Non-Approp. Special Fund								
	1.7	3.5	3.5	3.5				3.5
Capital Outlay								
General Fund	49.5							
Appropriated Special Fund								
Non-Approp. Special Fund								
	49.5							
Operations								
General Fund	25.0							
Appropriated Special Fund								
Non-Approp. Special Fund								
	25.0							
Primary and General Election								
General Fund			1,533.3					
Appropriated Special Fund								
Non-Approp. Special Fund								
			1,533.3					
School Elections								
General Fund	36.6	37.8	37.8	37.8				37.8
Appropriated Special Fund								
Non-Approp. Special Fund								
	36.6	37.8	37.8	37.8				37.8
TOTAL								
General Fund	445.1	611.0	2,209.2	611.0	5.7			616.7
Appropriated Special Fund								
Non-Approp. Special Fund								
	445.1	611.0	2,209.2	611.0	5.7			616.7

Elections
Kent County Elections
Kent County Elections
Internal Program Unit Summary

70-03-01	FY 2023	FY 2024	FY 2025	FY 2025	Inflation	Structural	Enhance-	FY 2025
LINES	Actual	Budget	Request	Base	& Volume Adjustment	Changes	ments	Recommend
IPU REVENUES								
General Fund	0.9							
Appropriated Special Fund								
Non-Approp. Special Fund								
	0.9	0.0	0.0	0.0				0.0
POSITIONS								
General Fund								
Appropriated Special Fund								
Non-Approp. Special Fund								
	0.0	0.0	0.0	0.0				0.0

BASE, INFLATION, STRUCTURAL CHANGES, ENHANCEMENTS AND ONE-TIME ITEMS

- Recommend inflation and volume adjustments of \$4.9 in Contractual Services for lease obligation; and \$0.8 in Contractual Services to reflect increase in fleet operating costs.
- Recommend one-time funding of \$1,533.3 in Primary and General Elections for the 2024 primary and general elections and \$80.0 in Specialty Vehicle for a new box truck in the Fiscal Year 2025 Supplemental One-Time Appropriations Act.

Elections
Sussex County Elections
Sussex County Elections
Internal Program Unit Summary

70-04-01								
LINES	FY 2023 Actual	FY 2024 Budget	FY 2025 Request	FY 2025 Base	Inflation & Volume Adjustment	Structural Changes	Enhance- ments	FY 2025 Recommend
Travel								
General Fund	1.3	2.2	2.2	2.2				2.2
Appropriated Special Fund								
Non-Approp. Special Fund								
	1.3	2.2	2.2	2.2				2.2
Contractual Services								
General Fund	414.4	422.1	485.9	422.1	3.8			425.9
Appropriated Special Fund								
Non-Approp. Special Fund								
	414.4	422.1	485.9	422.1	3.8			425.9
Energy								
General Fund	20.0	24.1	24.1	24.1				24.1
Appropriated Special Fund								
Non-Approp. Special Fund								
	20.0	24.1	24.1	24.1				24.1
Supplies and Materials								
General Fund	13.7	12.7	12.7	12.7				12.7
Appropriated Special Fund								
Non-Approp. Special Fund								
	13.7	12.7	12.7	12.7				12.7
Capital Outlay								
General Fund		2.0	2.0	2.0				2.0
Appropriated Special Fund								
Non-Approp. Special Fund								
	0.0	2.0	2.0	2.0				2.0
Primary and General Election								
General Fund			1,686.8					
Appropriated Special Fund								
Non-Approp. Special Fund								
	0.0	0.0	1,686.8	0.0				0.0
School Elections								
General Fund	61.9	52.6	52.6	52.6				52.6
Appropriated Special Fund								
Non-Approp. Special Fund								
	61.9	52.6	52.6	52.6				52.6
TOTAL								
General Fund	511.3	515.7	2,266.3	515.7	3.8			519.5
Appropriated Special Fund								
Non-Approp. Special Fund								
	511.3	515.7	2,266.3	515.7	3.8			519.5

Elections
Sussex County Elections
Sussex County Elections
Internal Program Unit Summary

70-04-01								
LINES	FY 2023 Actual	FY 2024 Budget	FY 2025 Request	FY 2025 Base	Inflation & Volume Adjustment	Structural Changes	Enhance- ments	FY 2025 Recommend
IPU REVENUES								
General Fund	2.3	2.0	2.0	2.0				2.0
Appropriated Special Fund								
Non-Approp. Special Fund								
	2.3	2.0	2.0	2.0				2.0
POSITIONS								
General Fund								
Appropriated Special Fund								
Non-Approp. Special Fund								
	0.0	0.0	0.0	0.0				0.0

BASE, INFLATION, STRUCTURAL CHANGES, ENHANCEMENTS AND ONE-TIME ITEMS

- Recommend inflation and volume adjustment of \$3.8 in Contractual Services for lease obligation.
- Recommend one-time funding of \$1,686.8 in Primary and General Elections for the 2024 primary and general elections and \$80.0 in Specialty Vehicle for a new box truck in the Fiscal Year 2025 Supplemental One-Time Appropriations Act.