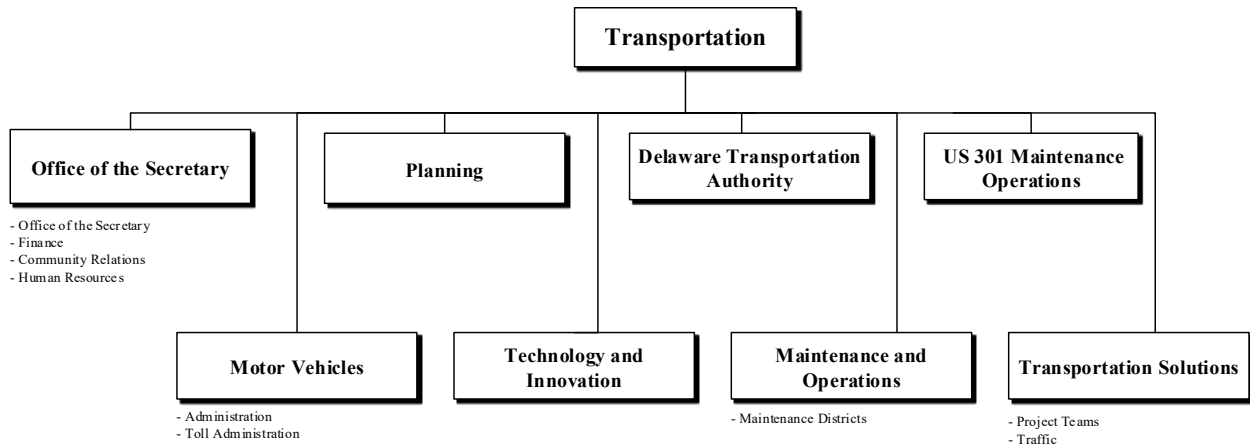
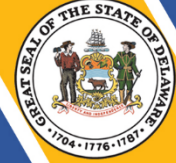


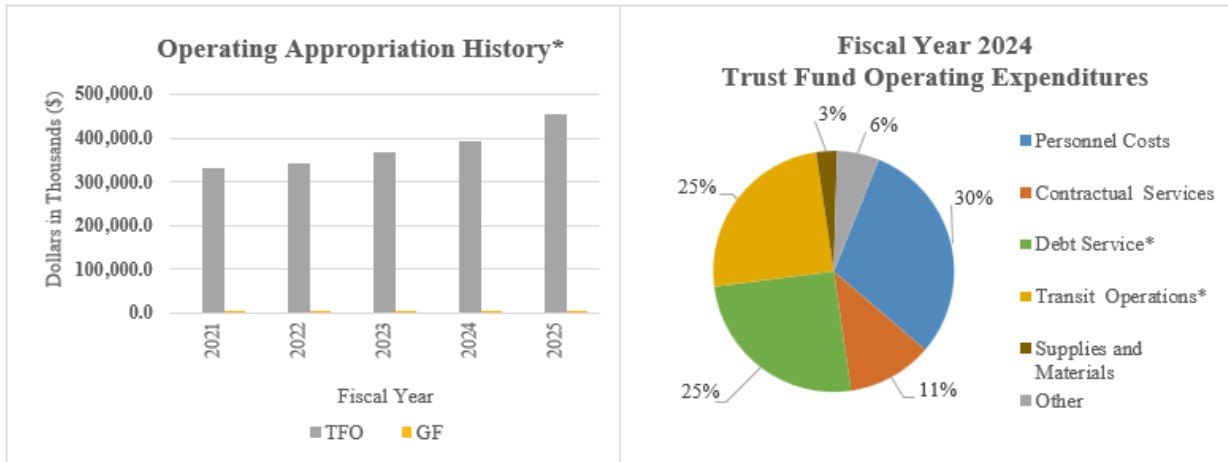
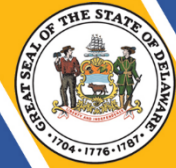
# Transportation



## At a Glance

- Maintain 14,402 lane miles of roadways, 1,722 bridges, one ferry, more than 1,200 signals, 300,000 signs, 410 miles of fiber optic cable, 275 traffic cameras, nearly 1000 Intelligent Transportation System devices, more than 3,500 pedestrian signal push buttons, 1,376 miles of storm drains, 3,514 miles of drainage ditches, more than 85,000 drainage structures and 540 storm water management facilities;
- Mow 50,000 acres of grass, trim 126 miles of roadside vegetation and work with the Department of Correction to clean-up 6,000 miles of Delaware roadways;
- Enhance the quality of life in Delaware by integrating transportation, land use and air quality strategies;
- Maintain a transportation program that integrates all modes statewide, including critical roadway projects, transit service, and bicycle and pedestrian improvements;
- Discover and solve transportation problems by collecting, analyzing, summarizing and publishing transportation-related data, including customer service and satisfaction data; and
- Execute and support initiatives in order to reduce crash statistics on Delaware roadways.

# Transportation



\*During Fiscal Years 2021-2024, Transportation received federal subsidies from the Coronavirus Aid, Relief, and Economic Security Act and the Coronavirus Response and Relief Supplemental Appropriations Act.

## Overview

The mission of the Delaware Department of Transportation (DelDOT) is to promote excellence in transportation for every mode, for every trip, for every dollar and for everyone. To effectively carry out the mission of the department, DelDOT focuses on improving services and making the right investments in Delaware’s transportation system at the right time.

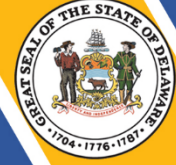
## On the Web

For more information, visit [deldot.gov](http://deldot.gov).

## Performance Measures

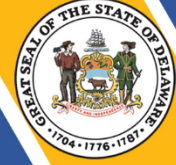
IPU	Performance Measure Name	Fiscal Year 2024 Actual	Fiscal Year 2025 Budget	Fiscal Year 2026 Governor’s Recommended
55-01-01	<b>Office of the Secretary</b>			
	% of Freedom of Information Act responses within 15 days	99	98	98
	% of pre-award audits completed within three days	94	94	95
	complete installation of EV infrastructure on all Alternative Fuel Corridors	0	35%	75%

# Transportation



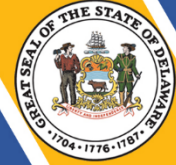
IPU	Performance Measure Name	Fiscal Year 2024 Actual	Fiscal Year 2025 Budget	Fiscal Year 2026 Governor's Recommended
<b>55-01-02</b>	<b>Finance</b>			
	Department bond rating	Aa1/AA+	Aa1/AA+	Aaa/AA+
	Debt service coverage ratio	6.33	6.25	5.8
	Debt service as a % of revenue	15.2	15.9	18.1
	% of public works contracts advertised within 10 business days of receipt of required information	92	85	85
<b>55-01-03</b>	<b>Community Relations</b>			
	# of participants attending public workshops and hearings	1668	1000	1000
<b>55-01-04</b>	<b>Human Resources</b>			
	Engineer I-IV Sign-On Bonus program hired**	10	4	10
<b>55-02-01</b>	<b>Technology and Innovation</b>			
	% of help desk calls resolved within three working days	85	85	85
<b>55-03-01</b>	<b>Planning</b>			
	% of preliminary traffic impact studies reviewed within 30 days of receipt	100	100	100
	% of subdivision reviews within 45 days of receipt	100	100	100
	% of final traffic impact study reports reviewed within 45 business days of receipt	79	100	100
	Length of bike facilities added to the network (miles)	9	4	4
<b>55-04-70</b>	<b>Maintenance Districts</b>			
	% of time snowfall of 4" or less removed within 24 hours after end of storm	100	100	100

# Transportation



IPU	Performance Measure Name	Fiscal Year 2024 Actual	Fiscal Year 2025 Budget	Fiscal Year 2026 Governor's Recommended
	% of time snowfall of 4-8" removed within 48 hours after end of storm	100	100	100
	% of time snowfall of 8" or greater removed within 72 hours after end of storm	100	100	100
	% of equipment exceeding age and/or usage parameters	12	10	10
	% of Community Transportation Fund requests for estimates processed within 20 business days	93	85	85
<b>55-06-01 Delaware Transportation Authority</b>				
	Statewide annual ridership (millions)	6.9	6.7	6.7
	% system-wide recovery ratio	10	10	10
	# of accidents per 100,000 miles	2.84	2.25	2.25
<b>55-07-01 US 301 Maintenance Operations</b>				
	Anticipated ridership (millions)	8.6	6.02	6.02
<b>55-08-30 Project Teams</b>				
	% of construction projects completed on time including approved time extensions	83	80	80
	% of non-open end construction projects completed with less than 10 percent overruns	52	90	90
	% of bridges rated in good or fair condition	98.4	98.5	97
	# of new or reconstructed curb ramps per year built to Americans with Disabilities Act standards	2005	500	500
	% of pavements in a State of Good Repair (excluding subdivision streets)	90	75	75

# Transportation



<b>55-08-40</b>	<b>Traffic</b>			
	% of critical signal maintenance calls responded to and corrected in 24 hours	96%	100	100
<b>55-11-10</b>	<b>DMV Administration</b>			
	% of time meeting Division of Motor Vehicles 20-minute wait time standard	56	75	75
	# of Class D road exams completed	12,568	13,500	14,000
	# of successful self-service kiosk transactions	98,502	65,000	70,000
	% increase of social media audience:			
	Facebook	+11.27	+20	+14
	Instagram	+7.06	+18	+10
	Twitter	+3.93	+7	+5
	# of students enrolled in motorcycle safety classes	1,294	1,400	1,400
	# of vehicle inspections	468,581	475,000	475,000
<b>55-11-60</b>	<b>Toll Administration</b>			
	% of E-ZPass market use:			
	I-95	88	84	84
	SR 1-Dover	83	82	82
SR 1-Biddles	82	82	82	