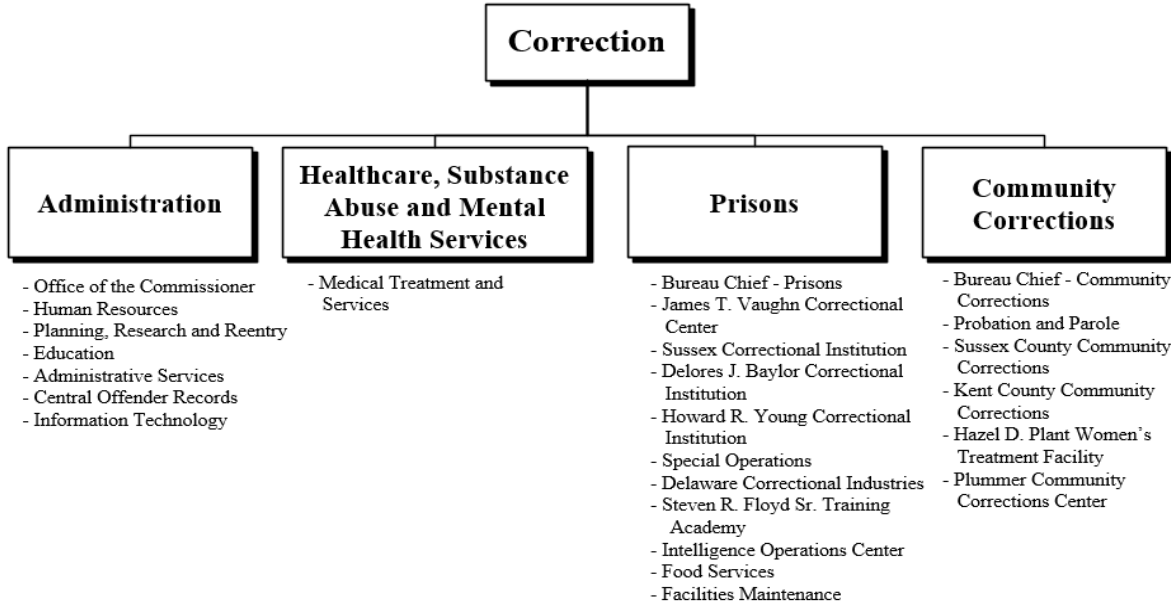
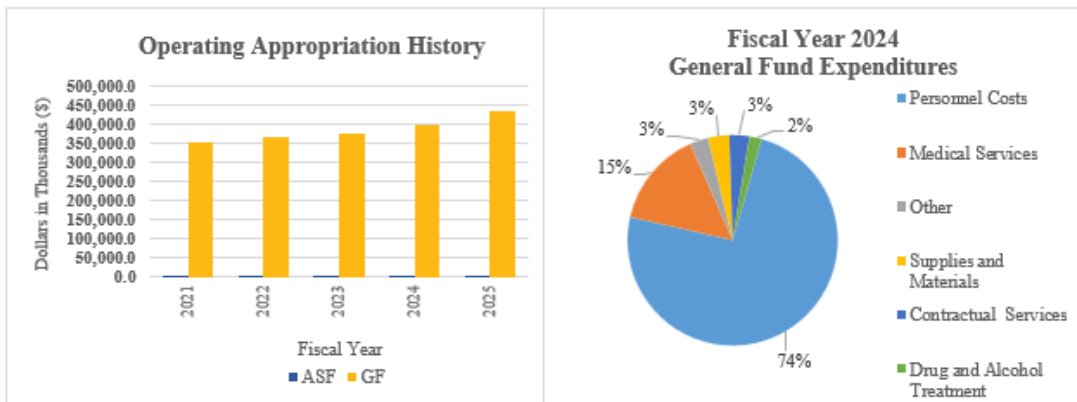


# Correction



## At a Glance

- Enhance public safety through the supervision of 4,500 adult offenders and 10,000 probationers within Department of Correction (DOC) facilities and communities;
- Create an environment conducive to productive offender programming and treatment;
- Maintain a stable and skilled workforce through recruitment initiatives and varied professional development opportunities;
- Maintain a system-wide emergency preparedness response capability; and
- Ensure every offender receives healthcare, substance abuse and mental health treatment services in compliance with National Commission on Correctional Health Care standards.





## Overview

The mission of DOC is to protect the public and promote successful reentry through safe and secure facilities, effective supervision, and rehabilitative services supported by a professional and diverse workforce. The department is comprised of the Office of the Commissioner, Bureau of Administrative Services, Bureau of Healthcare, Substance Abuse and Mental Health Services, Bureau of Prisons, and Bureau of Community Corrections.

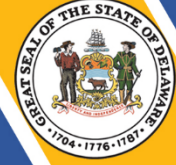
## On the Web

For more information visit [doc.delaware.gov](http://doc.delaware.gov).

## Performance Measures

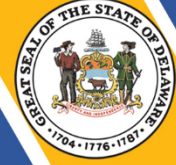
IPU	Performance Measure Name	Fiscal Year 2024 Actual	Fiscal Year 2025 Budget	Fiscal Year 2026 Governor's Recommended
<b>38-01-01</b>	<b><i>Office of the Commissioner</i></b>			
	# of random/periodic Internal Affairs rechecks	2,480	2,540	2,540
	# of positive media stories generated	46	75	75
	# of victim notification letters	11,992	15,000	15,000
<b>38-01-02</b>	<b><i>Human Resources</i></b>			
	# of random drugs tests of employees*	1,398	2,444	2,444
	# of grievances at Commissioner's level	32	40	40
	<i>*Staff vacancies affect the testing rate projections</i>			
<b>38-01-03</b>	<b><i>Planning, Research and Reentry</i></b>			
	# of statistical data responses	119	125	125
	# of community partnerships overseen via multi-disciplinary DOC committee	13	13	13

# Correction



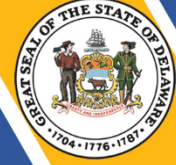
IPU	Performance Measure Name	Fiscal Year 2024 Actual	Fiscal Year 2025 Budget	Fiscal Year 2026 Governor's Recommended
<b>38-01-04</b>	<b>Education</b>			
	# of offenders enrolled in academic, vocational and life skills	1,664	1,697	1,707
	# of GEDs earned	148	150	154
	# of high school diplomas earned	30	32	34
	# of vocational certificates earned*	883	890	893
<i>*Vacant JTVCC computer teacher position resulted in less cohorts</i>				
<b>38-01-10</b>	<b>Administrative Services</b>			
	# of payment vouchers reported as exceptions on quarterly reconciliation*	65	0	0
	# of purchase orders reported as exceptions on quarterly reconciliation	0	0	0
	# of days to complete the monthly procurement card reconciliation from end of billing cycle	22	25	25
	# of on-demand payroll checks processed	56	100	100
	# of Correctional Officer series vacancies	249	237	225
<i>*September 2023 reconciliation included 50 vouchers pending Business Manager approval.</i>				
<b>38-01-12</b>	<b>Central Offender Records</b>			
	# of admissions processed	10,705	11,595	12,000
	# of felony transmittal requests/research*	2,123	1,700	1,000
	# of sentences calculated	23,170	22,500	22,000
	# of releases processed	8,955	9,350	9,500
	# of Expungements**	717	1,500	2,500
<i>*Felony Transmittals – figure increased due to federal election year. **Expungements - new performance measure due to connection with legislation.</i>				
<b>38-01-14</b>	<b>Information Technology</b>			
	% of high priority help desk calls resolved within one hour	91	91	93

# Correction



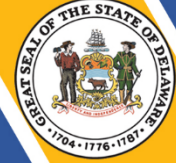
IPU	Performance Measure Name	Fiscal Year 2024 Actual	Fiscal Year 2025 Budget	Fiscal Year 2026 Governor's Recommended
<b>38-02-01</b>	<b><i>Medical Treatment and Services</i></b>			
	% of sick call requests in which face-to-face with a clinician occurs within 24 hours*	66	90	90
	% of chronic care enrolled patients seen in follow-up appointment when due*	69	90	90
	% of classified patients that completed a substance use disorder program	67	65	65
	% of patients on Medication Assisted Treatment (MAT) at the time of discharge who are connected to a treatment provider in the community to continue MAT post release	52	70	75
	<i>*Decrease in actual due to contractual staff vacancies.</i>			
<b>38-04-01</b>	<b><i>Bureau Chief - Prisons</i></b>			
	# of offenders classified to: drug treatment programs, work release and supervised custody	889	1,200	1,200
	# of offenders recommended for truth in sentencing modifications	10	15	15
	# of security/custody level classifications (initial/reclassifications)	1,442/5,238	3,000/5,000	3,000/5,000
	# of interstate compact/contract cases (in-state/out-of-state)	39/62	40/100	45/100
	# of Level Service Inventory Revised Assessments	1,496	1,750	1,750
	# of Quality Assessment Audits completed	12	12	12
<b>38-04-03</b>	<b><i>James T. Vaughn Correctional Center</i></b>			
	# of offender work hours: community service	15,933	16,000	16,000

# Correction



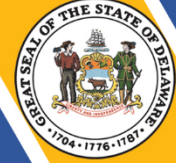
IPU	Performance Measure Name	Fiscal Year 2024 Actual	Fiscal Year 2025 Budget	Fiscal Year 2026 Governor's Recommended
	food service	344,404	345,000	345,000
	maintenance	144,436	144,000	144,000
	janitorial	327,101	327,000	327,000
	laundry	87,428	87,000	87,000
	other *	238,692	240,000	240,000
	\$ cost avoidance at minimum wage (thousands)	14,474.9	16,370.9	17,385.0
	# of Braille pages produced:**			
	Braille transcription	63,629	64,000	64,000
	large print	44,132	44,000	44,000
	graphics	3,239	3,300	3,300
	digital pages	1,404	1,500	1,500
	# of program participants:			
	Sex Offender Treatment	110	135	135
	Vocational Tech Classes***	241	250	250
	Alternatives to Violence	134	150	150
	Weekly Religious Activities	476	500	500
	Thresholds****	15	80	80
	# of video court/teleconferences	1,856	2,000	2,000
	* Includes barbers, central supply, commissary, clerks, education workers, yard workers, etc.			
	**The data reported for this measure varies year to year based on student's needs.			
	***Reduction due to Teacher position shortages.			
	****Program was reinstated in June 2024 resulting in low participation count for FY24.			
<b>38-04-04</b>	<b>Sussex Correctional Institution</b>			
	# of offender work hours:			
	food service	83,935	88,000	88,000
	janitorial	164,807	175,000	175,000
	laundry	40,995	40,000	40,000
	other *	303,320	280,000	280,000
	\$ cost avoidance at minimum wage (thousands)	7,413.2	8,234.9	8,745.0
	# of escapes	0	0	0

# Correction



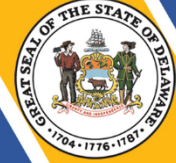
IPU	Performance Measure Name	Fiscal Year 2024 Actual	Fiscal Year 2025 Budget	Fiscal Year 2026 Governor's Recommended
	# of program participants:			
	Sex Offender Treatment	42	40	40
	Road to Recovery (R2R)***	255	400	400
	Alcoholics Anonymous	20	30	30
	Alternatives to Violence	112	100	100
	Reflections	48	60	60
	6 for 1	382	350	350
	# of video court/teleconferences****	8,444	8,500	8,500
	<i>* Includes barbers, central supply, commissary, clerks, education workers, yard workers, etc.                      ** Decrease in commissary workers.                      ***Beginning FY25, classes will double in size.                      ****In-person court appearances increased, resulting in a reduction in video court/teleconferences.</i>			
<b>38-04-05 Delores J. Baylor Correctional Institution</b>				
	# of offender work hours:			
	food service	55,469	55,000	55,000
	janitorial	44,835	33,000	33,000
	laundry*	4,942	13,000	13,000
	other **	10,147	10,500	11,000
	\$ cost avoidance at minimum wage (thousands)	1,442.4	1,574.9	1,680.0
	# of escapes	0	0	0
	# of program participants:			
	Survivors of Abuse in Recovery	100	100	100
	R2R (Replaced Key Village)	42	42	42
	Structured Care Unit	90	90	90
	Trauma Informed Workshops	5	5	5
	6 for 1	330	330	330
	Sex Offender Treatment	1	1	1
	# of video court/teleconferences	3,349	3,500	3,500
	<i>*Three washer/dryer units down, resulting in decreased laundry hours.                      **Includes barbers, central supply, commissary, clerks, education workers, yard workers, etc.</i>			

# Correction



IPU	Performance Measure Name	Fiscal Year 2024 Actual	Fiscal Year 2025 Budget	Fiscal Year 2026 Governor's Recommended
<b>38-04-06</b>	<b><i>Howard R. Young Correctional Institution</i></b>			
	# of offender work hours:			
	food service	209,561	190,000	210,000
	janitorial*	146,609	50,000	150,000
	laundry	28,323	24,000	30,000
	other **	138,668	185,000	150,000
	\$ cost avoidance at minimum wage (thousands)	6,539.5	6,342.1	8,100.00
	# of escapes	0	0	0
	# of program participants:			
	Sex Offender Treatment	37	31	31
R2R (Replaced Key)	98	95	95	
6 for 1	374	400	400	
Inside/Out	30	30	30	
Alternatives to Violence	159	140	140	
# of video court/teleconferences***	7,012	9,000	9,000	
<p><i>*Increase in janitorial work hours in FY24 due to ACA Accreditation prep and additional janitorial positions added.</i></p> <p><i>** Includes barbers, central supply, commissary, clerks, education workers, yard workers, etc.</i></p> <p><i>***In-person court appearances increased, resulting in a reduction in video court/teleconferences.</i></p>				
<b>38-04-08</b>	<b><i>Special Operations</i></b>			
	# of offenders transported	29,408	30,000	30,000
	# of Correctional Emergency Response Team missions	162	150	150
	# of K-9 teams certified to Police Dog Level 1	27	27	27
	# of detector dogs trained and operational	17	17	17
	# of Correctional Emergency Response Team trainings (CERT/CIG/CNT/CISM)	104	104	104
<b>38-04-09</b>	<b><i>Delaware Correctional Industries</i></b>			
	# of offenders employed	143	150	155
	\$ net sales (thousands)	2,137	2,144	2,208
	# of completed work orders	2,275	2,300	2,369

# Correction



IPU	Performance Measure Name	Fiscal Year 2024 Actual	Fiscal Year 2025 Budget	Fiscal Year 2026 Governor's Recommended
<b>38-04-12</b>	<b><i>Steven R. Floyd Sr. Training Academy</i></b>			
	# of training educator series certifications/continuing education courses/seminars completed	35	35	35
	# of 9mm transition courses (15 officers per course)*	59	20	0
	# of range training hours	2,500	2,500	2,500
	# of correctional officer recruits graduating from Correctional Employee Initial Training	175	200	200
	# of probation officer recruits graduating from Basic Officer Training Course	12	15	15
<i>*9mm transition anticipated to be completed in FY25.</i>				
<b>38-04-13</b>	<b><i>Intelligence Operations Center</i></b>			
	# of requests for information	900	950	1,000
	# of requests for service	825	950	1,000
	# of intelligence products	80	80	80
	# of assists to institutions	778	800	800
	# of assists to partner agencies	785	800	800
<b>38-04-20</b>	<b><i>Food Services</i></b>			
	# of offenders trained in food safety	332	340	350
	# of Central Supply accident-free miles	29,285	30,000	30,000
	# of offender grievances related to food service	366	365	350
	# of meals prepared	5,640,135	5,600,000	5,650,000
<b>38-04-40</b>	<b><i>Facilities Maintenance</i></b>			
	# of work orders completed	26,659	25,090	25,090
	% of work orders completed within 30 days	99	99	99
<b>38-06-01</b>	<b><i>Bureau Chief - Community Corrections</i></b>			
	% of provider compliance with contractual agreements	100	100	100



# Correction



IPU	Performance Measure Name	Fiscal Year 2024 Actual	Fiscal Year 2025 Budget	Fiscal Year 2026 Governor's Recommended
	% of bureau polices reviewed	100	100	100
	# of grants monitored	2	2	1
<b>38-06-02</b>	<b><i>Probation and Parole</i></b>			
	Average caseload size:			
	Level I	245	250	250
	Level II/ Level III	44	50	50
	Level IV (Home Confinement)	13	20	20
	Pretrial	37	45	45
	% of positive Safe Streets curfew checks	65	70	70
	% of positive urine tests			
	Level I - III	63	50	50
	Level IV/HC	47	40	40
	# of Level of Service Inventory - Revised completed	4,049	4,050	4,050
	# of monitoring units in service:			
	Standard - HC	200	200	200
	Cell - HC	39	40	40
	GPS	658	670	670
	Alcohol Device Monitoring	168	175	175
<b>38-06-07</b>	<b><i>Sussex County Community Corrections</i></b>			
	% of successful releases	98	98	98
	# of community service hours	60,598	65,000	70,000
	\$ cost avoidance at minimum wage (thousands)	757.5	918.1	1,050.0
	# of walk-aways	7	5	2
	# of programs available to residents*	17	25	30
	# of participants in all programs**	1,776	2,000	2,250
<p><i>*Staff who were teaching left SCCC, 5 for 5 classes no longer offered, and some volunteers have stopped teaching.</i></p> <p><i>**Offenders could be in enrolled in multiple programs during their stay therefore counted more than once.</i></p>				

# Correction



IPU	Performance Measure Name	Fiscal Year 2024 Actual	Fiscal Year 2025 Budget	Fiscal Year 2026 Governor's Recommended
<b>38-06-08 Kent County Community Corrections</b>				
	% of successful releases	95	95	95
	# of community service hours	9,337	10,000	11,500
	\$ cost avoidance at minimum wage (thousands)	116.7	141.3	172.5
	# of walk-aways	0	0	0
	# of programs available to residents	10	10	10
	# of participants in the R2R program	311	320	350
<b>38-06-13 Hazel D. Plant Women's Treatment Facility</b>				
	% of successful releases	84	89	89
	# of community service hours	5,498	5,500	5,500
	\$ cost avoidance at minimum wage (thousands)	68.7	77.7	82.5
	# of walk-aways	1	0	0
	# of programs available to residents	4	5	6
	# of participants in all programs	196	196	200
<b>38-06-14 Plummer Community Corrections Center</b>				
	% of successful releases	340	355	365
	# of community service hours	22,823	24,500	26,500
	\$ cost avoidance at minimum wage (thousands)	285.3	346.1	397.5
	# of walk-aways	13	10	5
	# of programs available to residents	28	30	32
	# of participants in all programs*	1,877	1,900	1,995
*Offenders could be in enrolled in multiple programs during their stay therefore counted more than once.				