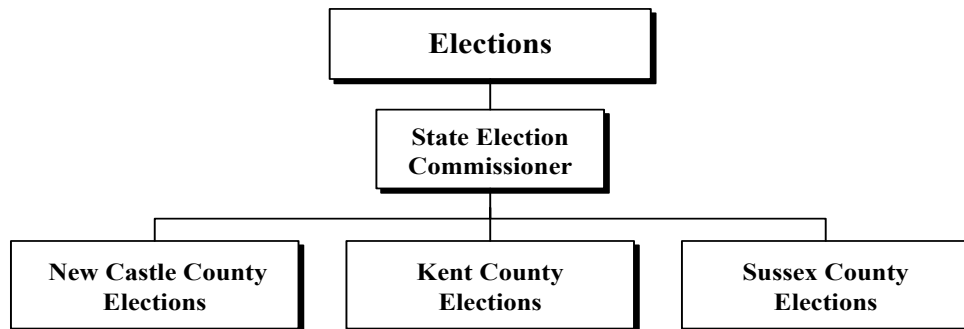
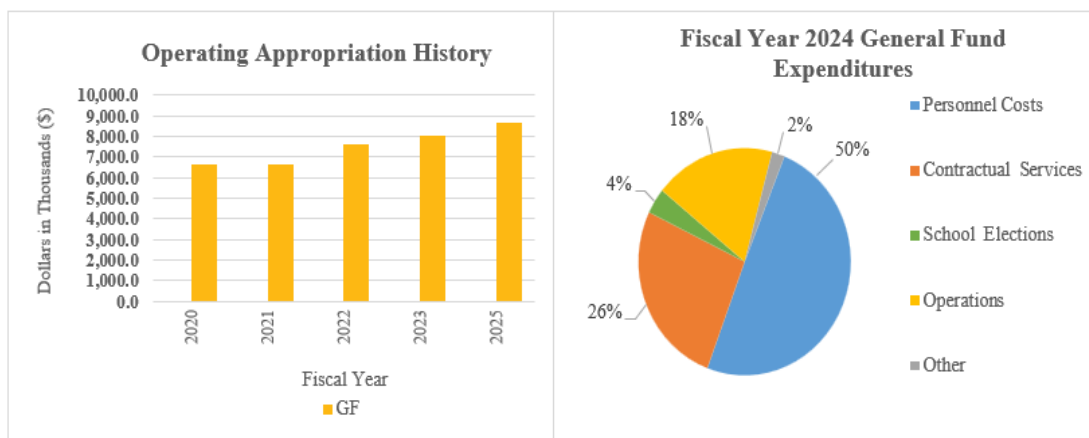


Elections

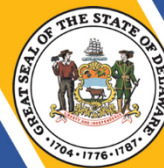


At a Glance

- Ensure the consistent administration of Delaware’s election laws;
- Conduct all the elections in the State, including school board and referenda, municipal, special, presidential and state primary, and general elections;
- Use technology to improve services to Delaware voters, including domestic as well as military and overseas citizens voters;
- Register to vote all eligible Delaware residents who wish to register, as well we ensure that voters registered automatically per Delaware Code are eligible to vote
- Maintain the accuracy of the list of registered voters by processing voter registration updates and removing ineligible voters from the list of registered voters; and
- Educate the public regarding the elections process, the use of the State’s voting equipment, Delaware’s election laws, and tools and resources available to Delaware’s voters, including the voter portal, ivote.de.gov.



Elections



Overview

The mission of the Department of Elections is to provide a standardized, transparent, secure, and accurate election system for the residents of Delaware. The department provides voter registration services to residents, including voting (Election Day polling places, early voting locations, and absentee voting options), campaign finance reporting and enforcement, and other elections and voter registration-related information.

The Department's offices in each county are responsible for facilitating primary, general, school, special and municipal elections within the county.

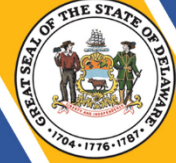
On the Web

For more information, visit elections.delaware.gov.

Performance Measures

IPU	Performance Measure Name	Fiscal Year 2024 Actual	Fiscal Year 2025 Budget*	Fiscal Year 2026 Governor's Recommended
70-01-01	<i>State Election Commissioner</i>			
	# of committees	5,047	4,664	4,897
	# of requests for campaign finance assistance	2,280	10,395	10,915
70-02-01	<i>New Castle County Elections</i>			
	Voter Registration Transactions			
	New voters	25,380	24,231	25,443
	Address changes	40,800	103,002	108,152
	Name changes	7,706	21,656	22,739
	Party changes	28,610	30,170	31,679
	Cancelled Voter Registrations			
	Deceased	19,684	5,685	5,969
	Moved out of State	25,159	6,883	7,227
	Absentee and Vote by Mail (VBM) Ballots			
	Total absentee ballots issued	2,278	29,361	30,829
	School Elections			
	# of referenda elections	5	6	6
# of school board elections	3	6	6	

Elections



70-03-01 Kent County Elections			
Voter Registration Transactions			
New voters	9,876	6,326	6,642
Address changes	14,022	19,740	20,727
Name changes	2,458	3,687	3,871
Party changes	10,944	2,940	3,087
Cancelled Voter Registrations			
Deceased	7,835	2,271	2,385
Moved out of State	7,889	1,910	2,006
Absentee and Vote by Mail (VBM) Ballots			
Total absentee ballots issued	826	9,529	10,005
School Elections			
# of referenda elections	2	5	5
# of school board elections	1	5	5
70-04-01 Sussex County Elections			
Voter Registration Transactions			
New voters	15,454	18,959	19,907
Address changes	20,438	27,697	29,082
Name changes	3,350	5,318	5,584
Party changes	18,730	7,875	8,269
Cancelled Voter Registrations			
Deceased	12,775	7,934	8,331
Moved out of State	14,224	6,884	7,228
Absentee and Vote by Mail (VBM) Ballots			
Total ballots issued	2,681	21,185	22,244
School Elections			
# of referenda elections	2	7	7
# of school board elections	3	7	7
* Election year			