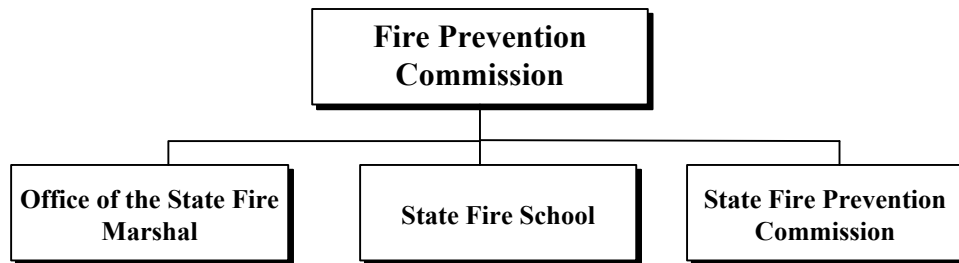
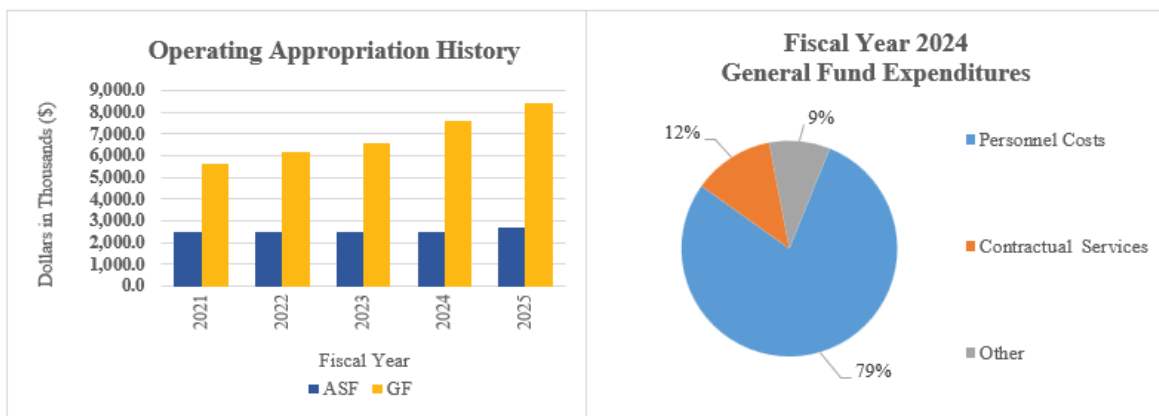


# Fire Prevention Commission



## At a Glance

- Protect life and property from fire for the residents of Delaware;
- Provide residents of Delaware and all visitors a fire safe environment in the home, the workplace or wherever they pursue their varied interests;
- Provide firefighters, Emergency Medical Services personnel, first responders and residents with professional instruction and training to ensure quality emergency response; and
- Improve public safety in the State.



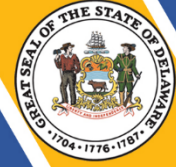
## Overview

The Office of the State Fire Marshal provides enforcement of the state fire prevention regulations; performs inspections, plan reviews, fire investigations, juvenile intervention programs, and interacts with the public.

The State Fire School provides training, undertakes projects and engages in activities which will serve to improve emergency response capabilities of the State's fire and emergency responders.

The State Fire Prevention Commission provides leadership, policy development, planning, and

# Fire Prevention Commission



analysis with regard to state fire prevention regulations, ambulance regulations, fire company financial reporting, Emergency Medical Technician certification, ambulance inspections, and investigatory services.

## On the Web

For more information about the Office of the State Fire Marshal, visit [statefiremarshal.delaware.gov](http://statefiremarshal.delaware.gov).

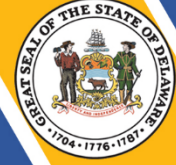
For more information about the State Fire School, visit [statefireschool.delaware.gov](http://statefireschool.delaware.gov).

For more information about the State Fire Prevention Commission, visit [statefirecommission.delaware.gov](http://statefirecommission.delaware.gov).

## Performance Measures

IPU	Performance Measure Name	Fiscal Year 2024 Actual	Fiscal Year 2025 Budget	Fiscal Year 2026 Governor's Recommended
<b>75-01-01</b>	<b><i>Office of the State Fire Marshal</i></b>			
	Life Safety Inspections conducted per deputy (13)	132	165	181
	Fire Code Complaints handled per deputy (13)	12	25	27
	Fire investigation caseload per deputy (13)	60.5	70	75
	Average turnaround time for full plan reviews (days)	15	15	15
	Plan review caseload per fire protection specialist	338	350	360
	Full plan reviews/ inspections:			
	New Castle County	1547/1284	1550/1300	1560
Kent County	534/433	550/450	560	
Sussex County	1639/1823	1650/1850	1660	
<b>75-02-01</b>	<b><i>State Fire School</i></b>			
	# of programs*	1246	2000	2000
	# of fire safety/injury prevention programs*	170	200	200

# Fire Prevention Commission



IPU	Performance Measure Name	Fiscal Year 2024 Actual	Fiscal Year 2025 Budget	Fiscal Year 2026 Governor's Recommended
	# of students:			
	fire/rescue	9109	10000	10000
	emergency care	4011	5000	5000
	industry	1343	1000	1000
	hazardous materials technician program	993	500	500
	fire safety/injury prevention	32411	30000	30000
<b>75-03-01</b>	<b><i>State Fire Prevention Commission</i></b>			
	# of hearings - public, appeal, and grievance	18	18	18
	# of commission meetings	12	12	12
	# of fire service functions	310	300	300
	# of emergency service functions	75	78	75