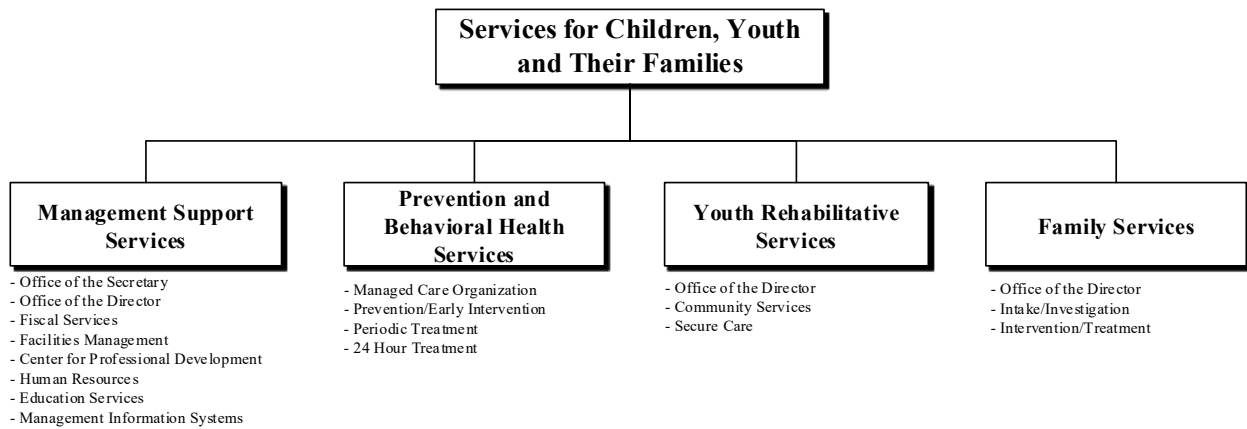
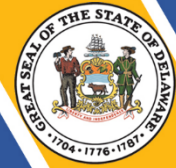
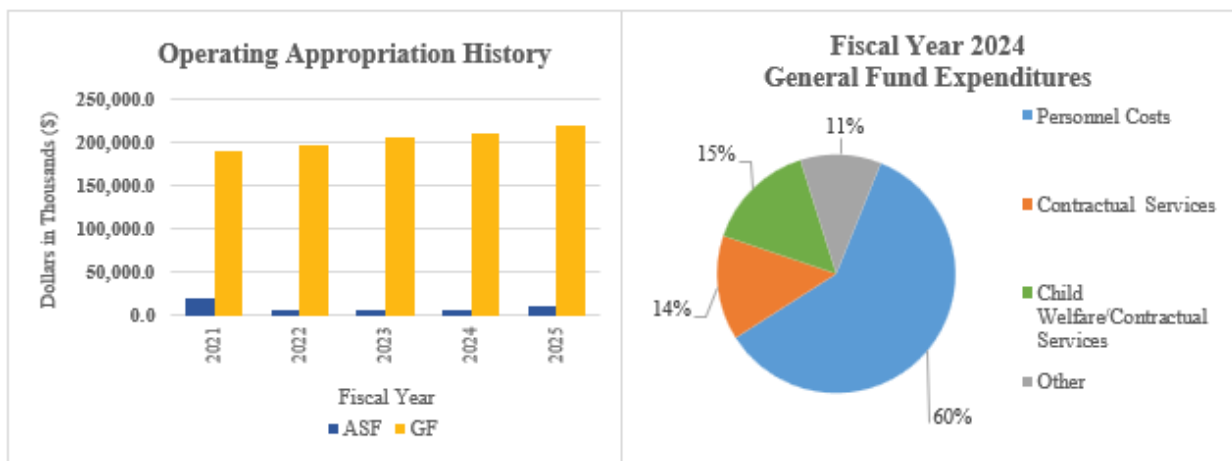


Services for Children, Youth and Their Families



At a Glance

- Investigate child abuse, neglect and dependency, and offer treatment services, foster care, adoption, and independent living;
- Provide accessible and effective behavioral and mental health services in the least restrictive environment to over 3,600 children;
- Prevent entry or reentry into one or more of the services by providing prevention and early intervention services;
- Provide juvenile justice services to over 1,200 youth including: detention, institutional care, probation and aftercare services; and
- Provide educational programs that enable students to continue learning while receiving departmental services.



Services for Children, Youth and Their Families



Overview

The mission of the Department of Services for Children, Youth and their Families (DSCYF) is to engage families and communities to promote the safety and well-being of children through prevention, intervention, treatment and rehabilitative services. DSCYF is comprised of four major divisions: Management and Support Services; Prevention and Behavioral Health Services (PBHS); Youth Rehabilitative Services (YRS); and Family Services.

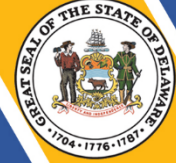
On the Web

For more information, visit kids.delaware.gov.

Performance Measures

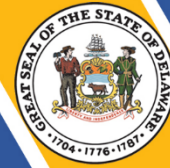
IPU	Performance Measure Name	Fiscal Year 2024 Actual	Fiscal Year 2025 Budget	Fiscal Year 2026 Governor's Recommended
37-01-10	Office of the Secretary			
	% of YRS/PBHS contracted community-based expenditures of total contracted expenditures	45	54	54
	% of children returned to DSCYF service within 12 months of case closure	12.5	25	20
	% of children in DSCYF out-of-home care	10.5	12	12
37-01-15	Office of the Director			
	% of annual revenue goal achieved	101.4	100	100
	% IV-E Penetration Rate for Foster Care	31.63	20	20
37-01-20	Fiscal Services			
	% of accounts payable transactions processed in First State Financials without the need for modification	98.23	95	95
37-01-25	Facilities Management			
	% of work orders completed within established time standards	99.44	95	95

Services for Children, Youth and Their Families



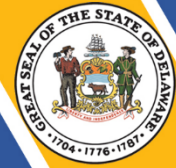
IPU	Performance Measure Name	Fiscal Year 2024 Actual	Fiscal Year 2025 Budget	Fiscal Year 2026 Governor's Recommended
37-01-30	Human Resources*			
	# of days to fill vacancies for recruited positions (average)	34	60	60
	*Human Resource functions were consolidated into the Department of Human Resources, removing this performance measure			
37-01-35	Center for Professional Development			
	% of participants who evaluate CPD trainers as "very good" or "excellent" in addressing cultural and diversity issues in DSCYF training sessions	82.5	80	80
	% of DSCYF training sessions canceled for reasons other than low enrollment or business needs	<1	5	5
37-01-40	Education Services			
	% of adjudicated students who transition from a YRS residential facility (non-detention) and maintain school or employment placement for 90 days or more as measured by transition follow-up data	67	70	70
	% of students in an agency school for six months or more, that increase their standard score as measured by the STAR assessment:			
	Mathematics	69.5	90	90
	Reading	72.4	90	90
	% of adjudicated students who participate in a transition meeting 30-45 days before discharge	26	90	90

Services for Children, Youth and Their Families



	% of students who remain continuously enrolled in a DSCYF facility for four marking periods and earn enough credits for promotion to the next grade level	90.5	95	95
37-01-50 Management Information Systems				
	% of time the Department Case Management System is available during standard working hours	100	99.5	99.5
	% of time the Department Production Databases are available during standard working hours	100	99.5	99.5
37-04-10 Managed Care Organization				
	% of crisis assessments that are started within 60 minutes of clinician referral	99	95	95
	% of cases that receive contact from care coordinator within 7 business days*	N/A	85	85
	*Remove measure			
37-04-20 Prevention/Early Intervention				
	% of parents with children in the K-5 Early Intervention program that were satisfied with improvements in their children's behavioral health	96	97	96
	% of children who show improvement on the K-12 Positive Action Assessment	85	85	85
	% of children maintaining in an early learning setting following consultation	99	98	98
37-04-30 Periodic Treatment				
	% of identified clients presenting in crisis, treated without hospital admissions	83	80	80
37-04-40 24 Hour Treatment				
	% of hospital readmissions within 30 days of discharge	15	12	15

Services for Children, Youth and Their Families



	% of youth in the Child and Family Care Coordination Unit who are served exclusively in the community	65	60	60
37-05-30 Community Services				
	% of Level IV recidivism	74	35	35
	% of probation/aftercare contacts completed on time	64	90	90
	% of youth on probation/aftercare supervision that have a reduction of criminogenic risk and increase of protective factors		60	60
	% of youth on probation/aftercare supervision that have a reduction of criminogenic risk*	40	60	60
	% of youth on probation/aftercare supervision that have an increase of protective factors*	48	60	60
	<i>*Adjusted performance measure</i>			
37-05-50 Secure Care				
	% of Ferris School recidivism*	79	40	40
	<i>*Recidivism rates reflect a cohort of calendar year 2021 releases. Of those in Ferris, 100% had a high risk to reoffend based on risk/needs assessment</i>			
37-06-10 Office of the Director				
	% of quality assurance case reviews completed timely	100	100	100
37-06-30 Intake/Investigation				
	% of initial investigation contacts on time	82	95	95
37-06-40 Intervention/Treatment				
	% of timely initial treatment contacts	73	95	95
	% absence of maltreatment within 12 months	97	97	97
	% of exits to adoption in less than 24 months	52	37	37